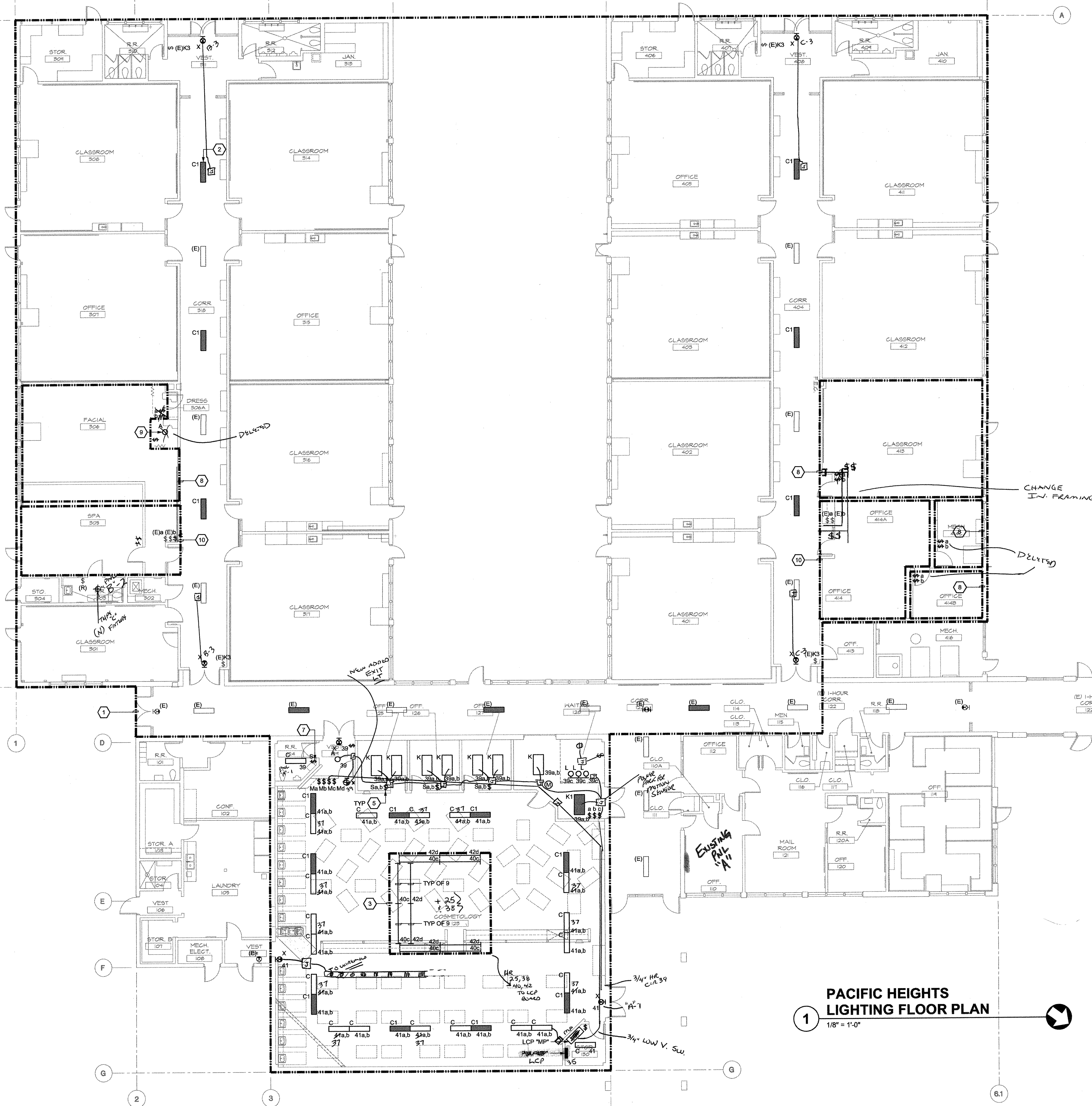


FILE LOCATION: P:\2163.002\Permit Pkg 310CAD\Arch\SKYLINE PKG\CONFORM SET\Elec\03054E30.dwg
 LAST SAVED ON: 9/10/04 at 4:17pm. PLOTTED ON: 9/13/04 at 2:11pm



PACIFIC HEIGHTS LIGHTING FLOOR PLAN

1 1/8" = 1'-0"

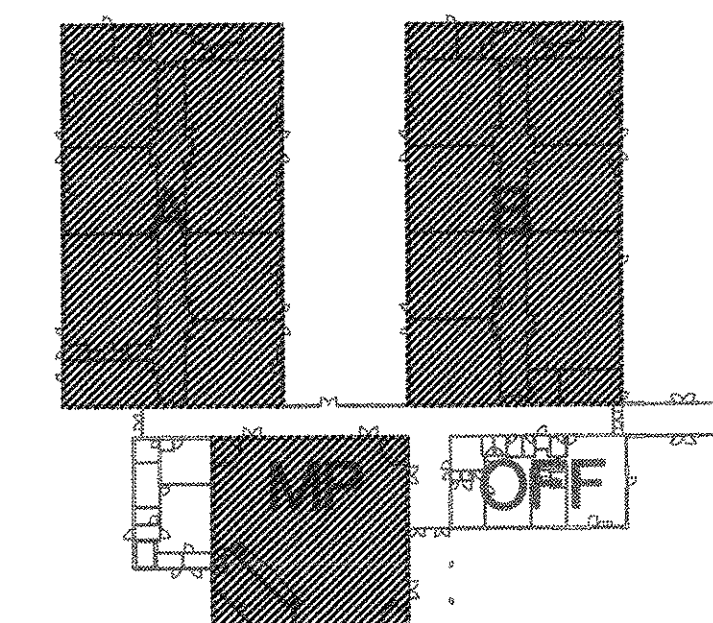
GENERAL NOTES

- SEE ARCHITECTURAL DOCUMENTS FOR EXACT PLACEMENT OF ALL LIGHT FIXTURES, EXPOSED CONTROL DEVICES AND LIGHT SWITCHES. VERIFY CEILING TYPE WITH ARCHITECTURAL DOCUMENTS AND COORDINATE TRIMS. PROVIDE ALL REQUIRED FIXTURE MOUNTING HARDWARE. COORDINATE FIXTURE TYPES WITH MOUNTING SURFACE PRIOR TO ORDERING.
- RUN ALL INTERIOR CONDUIT IN FINISHED INTERIOR AREAS CONCEALED UNLESS OTHERWISE NOTED.
- PROVIDE U.L. LISTED FIRE STOP ENCLOSURES FOR ALL RECESSED FIXTURES IN FIRE RATED CEILINGS.
- PROVIDE SINGLE PLATE WALL COVER FOR MULTIPLE SWITCHES. SEE DRAWINGS FOR NUMBER OF SWITCHES IN SPECIFIC LOCATIONS.
- MOUNT WALL MOUNTED MOTION DETECTOR AT 8'-0" ABOVE FINISHED FLOOR, UNLESS OTHERWISE NOTED.
- CIRCUIT ALL LIGHT FIXTURES IN COSMOTOLOGY ROOM TO PNL "MP", UNLESS OTHERWISE NOTED.
- SEE SHEETS E7.0 AND E7.1 FOR LIGHT FIXTURE MOUNTING DETAILS.
- REFER TO DETAIL 2/E7.0 FOR LIGHTING CONTROL, DETAIL 3/E7.0 FOR 2 LAMP TYPICAL SWITCHED EMERGENCY WIRING, AND DETAIL 4/E7.0 FOR MOTION DETECTOR WIRING.

SHEET NOTES

- WORK AREA.
- RECONNECT CORRIDOR FIXTURE IN PLACE.
- REPLACE ALL (E) LAMPS AND BALLASTS IN (E) LIGHT FIXTURES ABOVE (E) LUMINOUS CEILING. PROVIDE PHILIPS F96T9/TL741 LAMPS, HIGH POWER FACTOR ELECTRONIC BALLASTS, SOCKETS, WIRING, CONNECTIONS, AND ALL OTHER ASSOCIATED HARDWARE REQUIRED FOR WORKING CONDITION. CIRCUIT FIXTURES TO PNL "MP" -3.5 VIA LCP.
- NOT USED.
- PROVIDE DUAL RELAY OCCUPANCY SENSOR SWITCH. INSTALL AND COMMISSION PER MANUFACTURER'S RECOMMENDATIONS. PROVIDE ALL ACCESSORIES AND HARDWARE TO COMPLETE INSTALLATION.
- NOT USED.
- PROVIDE OCCUPANCY SENSOR SWITCH. INSTALL AND COMMISSION PER MANUFACTURER'S RECOMMENDATIONS. PROVIDE ALL ACCESSORIES AND HARDWARE TO COMPLETE INSTALLATION.
- REWIRE (E) LIGHT FIXTURES IN THIS AREA TO NEW SWITCHES.
- CONNECT TO LOCAL LIGHTING CIRCUIT.
- REWIRE (E) LIGHT FIXTURES IN THIS AREA TO (E) SWITCHES.

KEY PLAN

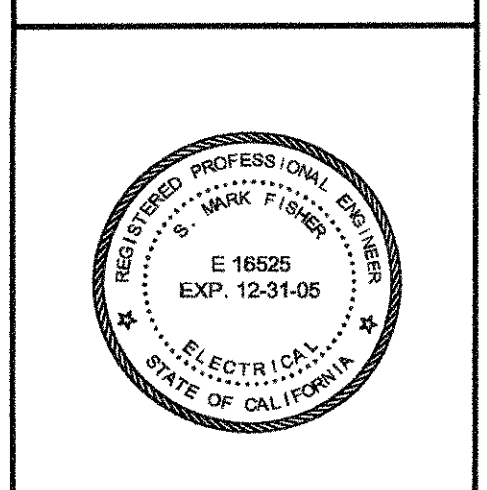


DSA SUBMITTAL - 02.13.04

Sugimura & Associates Architects
 Architecture • Interiors
 Landscape Architecture
 2155 South Bascom Ave., Suite 900
 San Jose, CA 95128
 408-879-0600 FAX 408-377-6066
 COPYRIGHT © 2001 Sugimura & Associates/Architects

INTEGRATED DESIGN ASSOCIATES INC.
 CONSULTING ELECTRICAL ENGINEERS
 1000 California Street, Suite 110
 San Francisco, CA 94109
 Tel: (415) 398-0000 Fax: (415) 398-0001

REGISTERED ELECTRICAL ENGINEER
 DIV. OF THE STATE ARCHITECT
 OFFICE OF REGULATION SERVICES
 APP. NO. _____ FILE NO. _____
 DATE _____ DATE _____
 Division of the State Architect
 125 Clay St., Suite 907
 Oakland, CA 94612



PACIFIC HEIGHTS LIGHTING FLOOR PLAN
 SKYLINE COLLEGE SWING SPACE
 PERMIT PACKAGE #3
 SKYLINE COLLEGE
 3300 COLLEGE DRIVE
 SAN BRUNO, CA. 94066

REVISIONS

NO.	ITEM	DATE
1	CONSTRUCTION ISSUE	6/10/04

CLIENT APPROVAL: _____
 DRAWN BY: RGS
 CHECKED BY: SMF
 JOB NO: 2163.002
 DATE: 5 FEB. 2004

E3.0
 OF 5 SHEETS

AS BUILT