

REVISION	DATE
ADDENDUM NO. 1	08/18/08
ADDENDUM NO. 2	11/06/09

DRAWING STATUS	DATE
DSB PLAN CHECK	08/26/08
DSB BACK CHECK	01/22/09
BIDDING (RFP #0028)	09/18/09
CONSTRUCTION	

FILE NO. 41-C1
IDENTIFICATION STAMP
DIV. OF THE STATE ARCHITECT
01-110074
AC FLS SS
DATE

BUILDINGS 5 & 6 RENOVATIONS

San Mateo County Community College District

BID ADDENDA

APPROVED BY THE STATE ARCHITECT
AC FLS SS JG
APPL. NO. 0024 DATE 5/20/10

CAÑADA COLLEGE
4200 Farm Hill Boulevard
Redwood City, CA 94061

SECOND FLOOR PLAN
- POWER

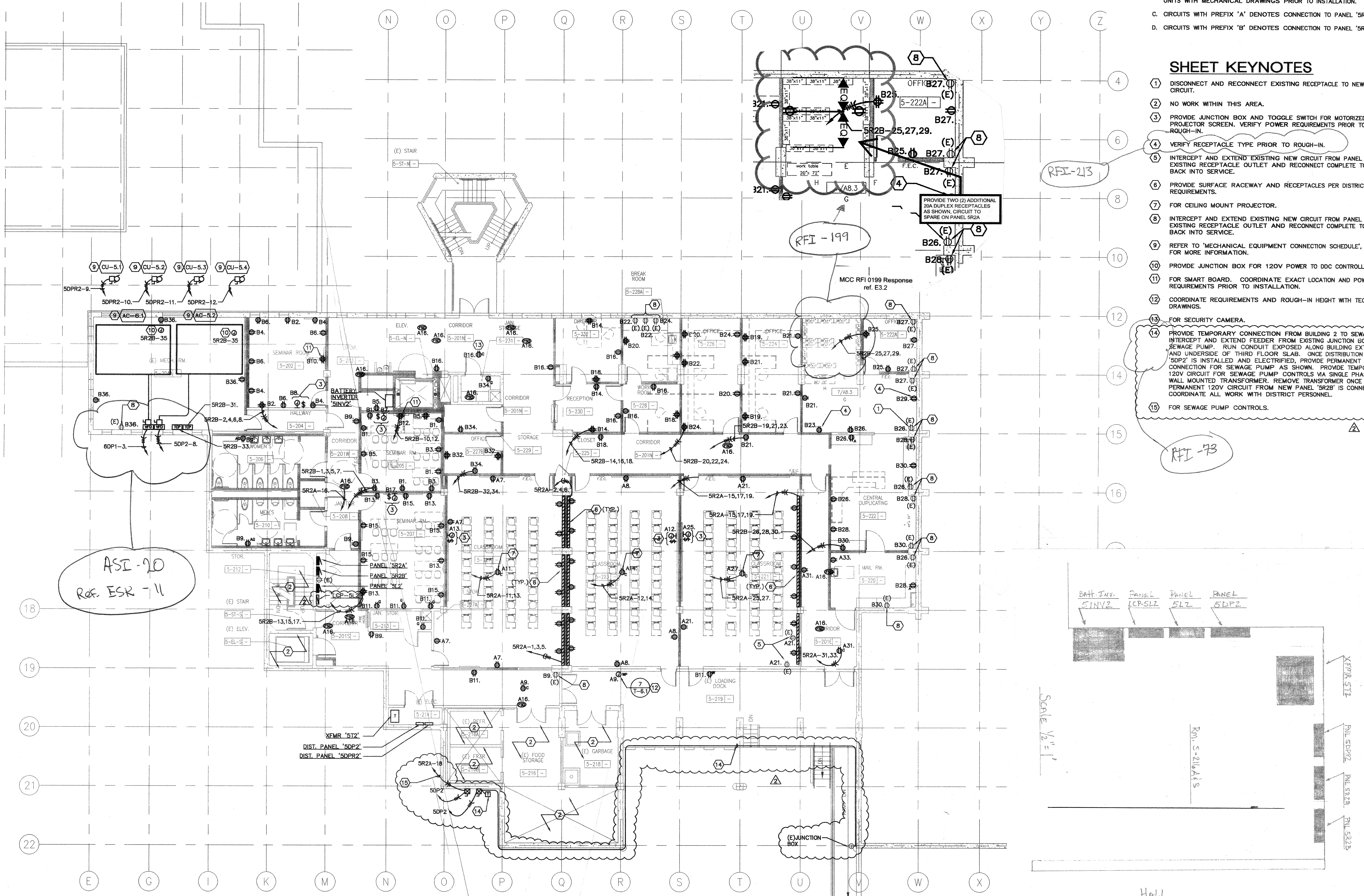
Date	08/29/08	Drawing Number	E3.2
Scale	AS NOTED		
Project Number	07013		

GENERAL SHEET NOTES

- A. COORDINATE EXACT LOCATION AND MOUNTING HEIGHT OF RECEPTACLES, VOICE/DATA OUTLETS AND ELECTRICAL DEVICES WITH ARCHITECT PRIOR TO INSTALLATION.
- B. COORDINATE EXACT LOCATION AND POWER REQUIREMENTS OF HVAC UNITS WITH MECHANICAL DRAWINGS PRIOR TO INSTALLATION.
- C. CIRCUITS WITH PREFIX 'A' DENOTES CONNECTION TO PANEL 'SR2A'.
- D. CIRCUITS WITH PREFIX 'B' DENOTES CONNECTION TO PANEL 'SR2B'.

SHEET KEYNOTES

- 1 DISCONNECT AND RECONNECT EXISTING RECEPTACLE TO NEW DEDICATED CIRCUIT.
- 2 NO WORK WITHIN THIS AREA.
- 3 PROVIDE JUNCTION BOX AND TOGGLE SWITCH FOR MOTORIZED PROJECTOR SCREEN. VERIFY POWER REQUIREMENTS PRIOR TO ROUGH-IN.
- 4 VERIFY RECEPTACLE TYPE PRIOR TO ROUGH-IN.
- 5 INTERCEPT AND EXTEND EXISTING NEW CIRCUIT FROM PANEL 'SR2A' TO EXISTING RECEPTACLE OUTLET AND RECONNECT COMPLETE TO PLACE BACK INTO SERVICE.
- 6 PROVIDE SURFACE RACEWAY AND RECEPTACLES PER DISTRICT SPACING REQUIREMENTS.
- 7 FOR CEILING MOUNT PROJECTOR.
- 8 INTERCEPT AND EXTEND EXISTING NEW CIRCUIT FROM PANEL 'SR2B' TO EXISTING RECEPTACLE OUTLET AND RECONNECT COMPLETE TO PLACE BACK INTO SERVICE.
- 9 REFER TO 'MECHANICAL EQUIPMENT CONNECTION SCHEDULE', SHEET E6.1 FOR MORE INFORMATION.
- 10 PROVIDE JUNCTION BOX FOR 120V POWER TO DDC CONTROLLER.
- 11 FOR SMART BOARD. COORDINATE EXACT LOCATION AND POWER REQUIREMENTS PRIOR TO INSTALLATION.
- 12 COORDINATE REQUIREMENTS AND ROUGH-IN HEIGHT WITH TECHNOLOGY DRAWINGS.
- 13 FOR SECURITY CAMERA.
- 14 PROVIDE TEMPORARY CONNECTION FROM BUILDING 2 TO SEWAGE PUMP. INTERCEPT AND EXTEND FEEDER FROM EXISTING JUNCTION BOX TO SEWAGE PUMP. RUN CONDUIT EXPOSED ALONG BUILDING EXTERIOR AND UNDERSIDE OF THIRD FLOOR SLAB. ONCE DISTRIBUTION PANEL 'SDP2' IS INSTALLED AND ELECTRIFIED, PROVIDE PERMANENT CONNECTION FOR SEWAGE PUMP AS SHOWN. PROVIDE TEMPORARY 120V CIRCUIT FOR SEWAGE PUMP CONTROLS VIA SINGLE PHASE, 500VA, WALL MOUNTED TRANSFORMER. REMOVE TRANSFORMER ONCE PERMANENT 120V CIRCUIT FROM NEW PANEL 'SR2B' IS CONNECTED. COORDINATE ALL WORK WITH DISTRICT PERSONNEL.
- 15 FOR SEWAGE PUMP CONTROLS.



1 SECOND FLOOR PLAN - POWER

SCALE: 1/8"=1'-0"