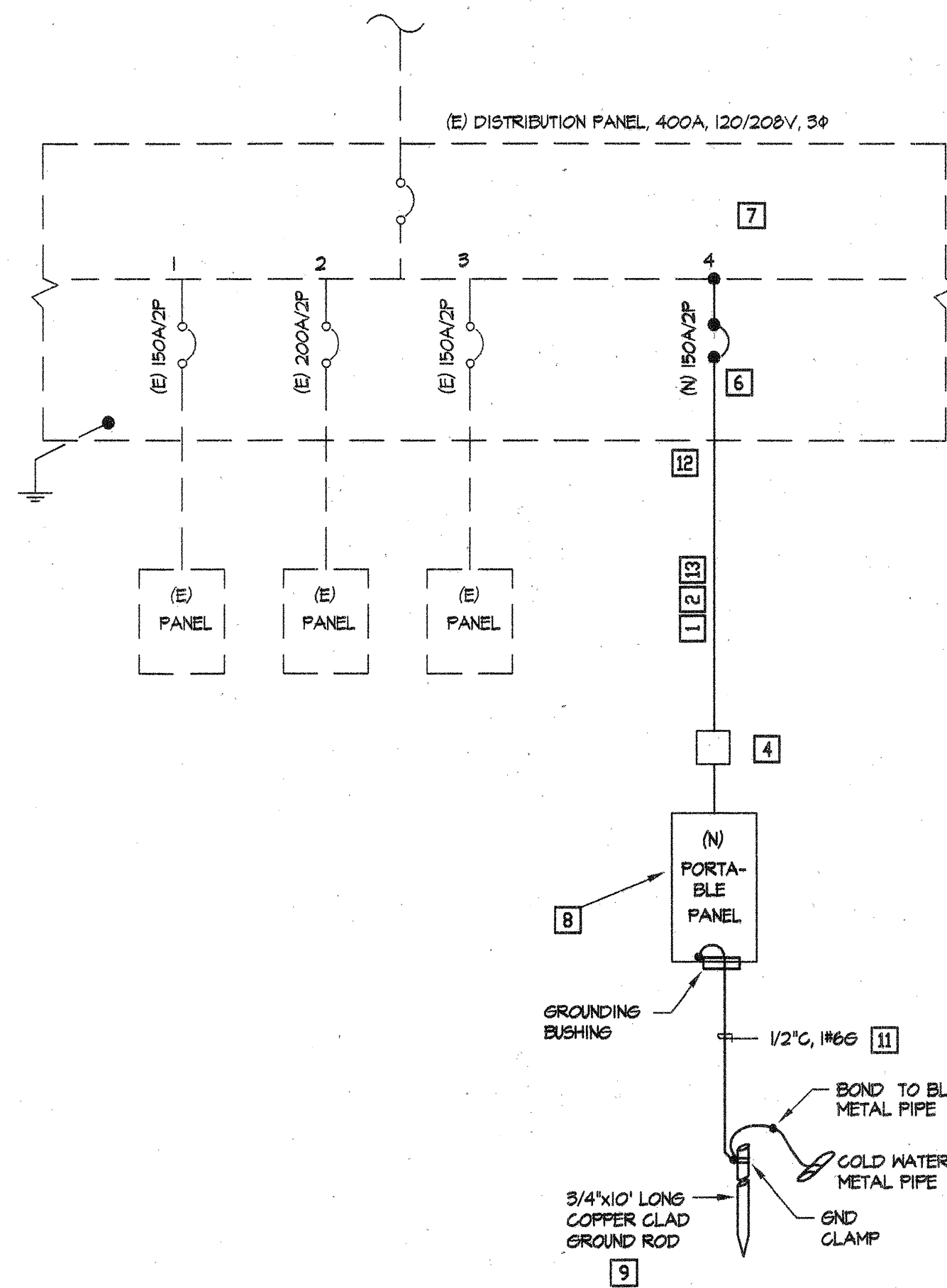
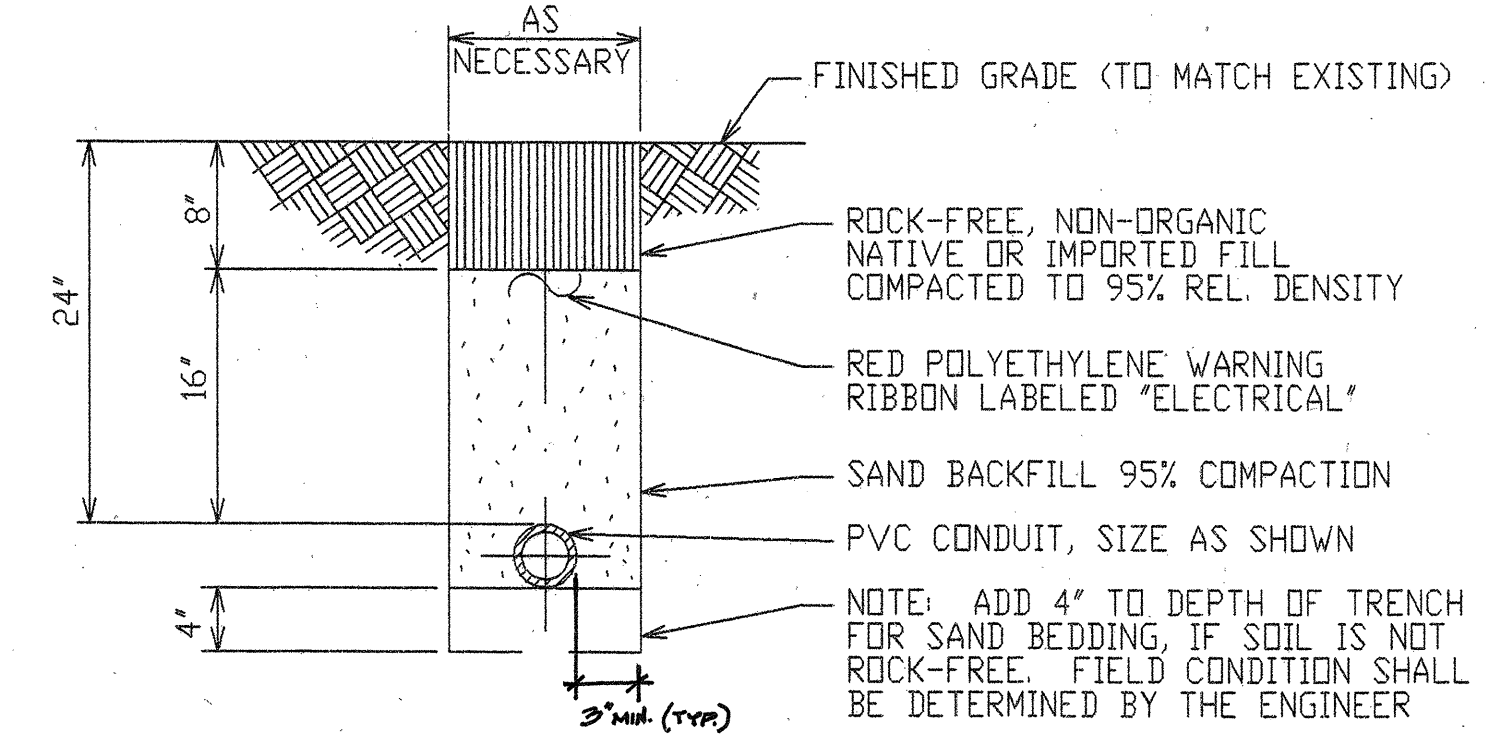


SHEET NOTES

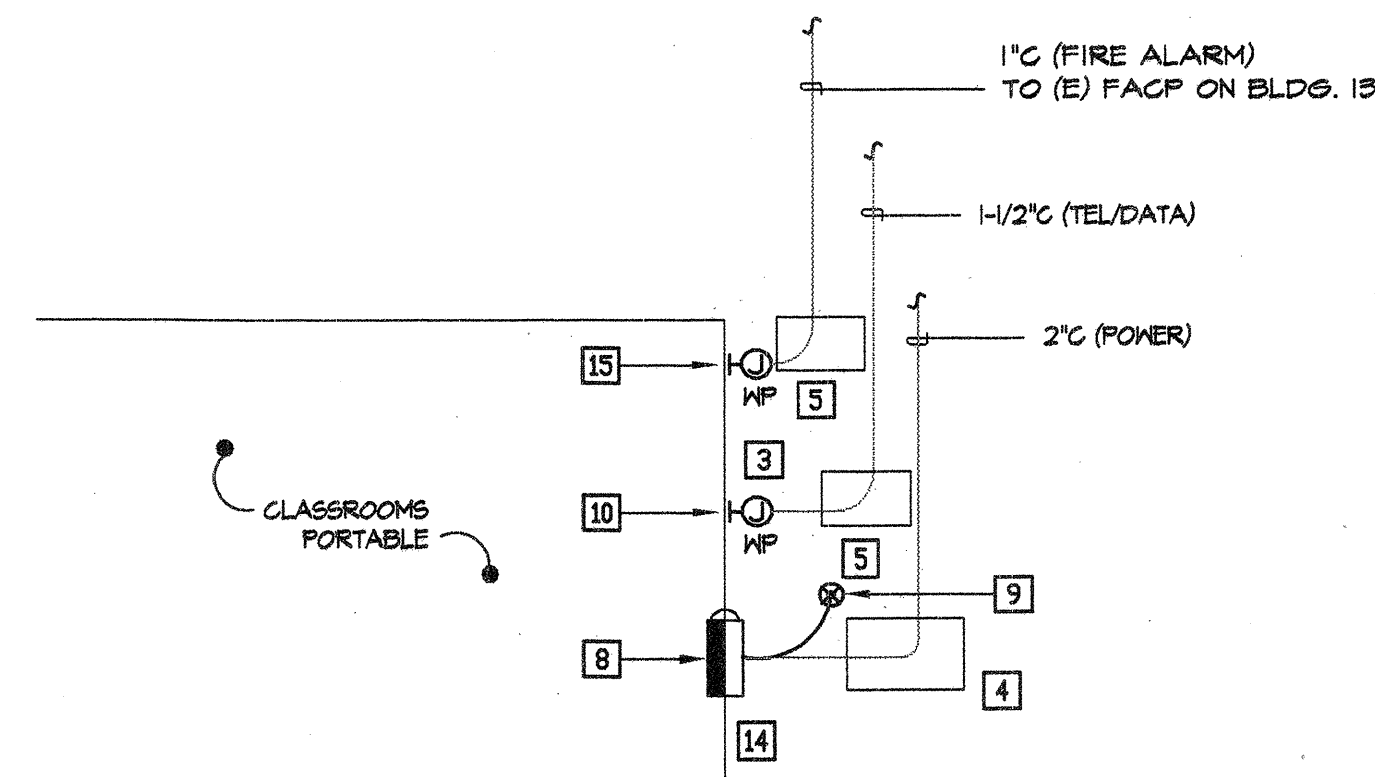
- 1 RUN UNDERGROUND CONDUITS BELOW GRADE AS INDICATED, DEPTH OF CONDUITS SHALL BE PER N.E.C. TABLE 500-5. PROVIDE PVC CONDUITS W/ PRE-FABRICATED 90 DEG. STEEL ELBOWS. WRAP ELBOWS W/ TWO LAYERS OF PLASTIC CONDUIT TAPE.
- 2 2" (FOR POWER), 3-#10 THIN CU. WIRE W/ #6 CU. GRD. MODIFY (E) SWITCHBOARD AS REQUIRED.
- 3 CONCRETE J-BOX SIZE #3-1/2 FOR COMM. & DATA
- 4 CONCRETE J-BOX SIZE #5 FOR POWER. SEE SHEET E1 FOR LOCATION.
- 5 TYPICAL OF 3 PULL BOXES AT EACH LOCATION (I-POWER, I-TEL/DATA, I-F.A.) SIZE PER N.E.C. SUBMIT SHOP DRAWINGS OF ALL SIZES FOR REVIEW. PULLBOXES SHALL BE FLUSH WITH GROUND.
- 6 NEW CIRCUIT BREAKER, 150A/2P, 120/240V
- 7 NEW WORK SHALL BE PERFORMED WITHOUT NULLIFYING THE INTEGRITY OF THE DISTRIBUTION PANEL.
- 8 PANEL FURNISHED AS PART OF PORTABLE CLASSROOM, HIRED BY CONTRACTOR. COORDINATE ALL REQUIREMENTS.
- 9 GROUND ROD 3/4" O x 10'-0" COPPER GLAD STEEL ROD, DRIVEN W/ TOP OF ROD 12" BELOW FINISHED GRADE COMPLETE W/ #6 END TERMINATIONS SHALL BE HOUSED IN PRE-CAST CONCRETE BOX (CHRISTY #8 BOX WITH FLSD LID). USE UL APPROVED CLAMPS.
- 10 +24" ABOVE FINISHED-GRADE. LABEL (TEL/DATA). EXTEND EMPTY CONDUITS TO RELATED POINT OF SERVICE OF PORTABLE.
- 11 USE RIGID STEEL CONDUIT FOR GROUND CONDUCTOR INSTALLATION. RUN GROUND CONDUCTOR CONTINUOUSLY FROM PANEL GROUND BUS TO GROUND ROD TO BOND BUILDING METAL FRAME AND COLD WATER METAL PIPE.
- 12 NEW CONDUCTORS & TERMINATION FURNISHED & INSTALLED, INSIDE DIST. PANEL.
- 13 NEW TRENCH (SEE DETAIL #3)
- 14 POINT OF CONNECTION (P.O.C.) TO NEW MODULAR CLASSROOM.
- 15 +24" ABOVE FIN. GRADE, PROVIDE 1" C. TO F.A. CONNECTION POINT OF PORTABLE. VERIFY ALL CONDITIONS.



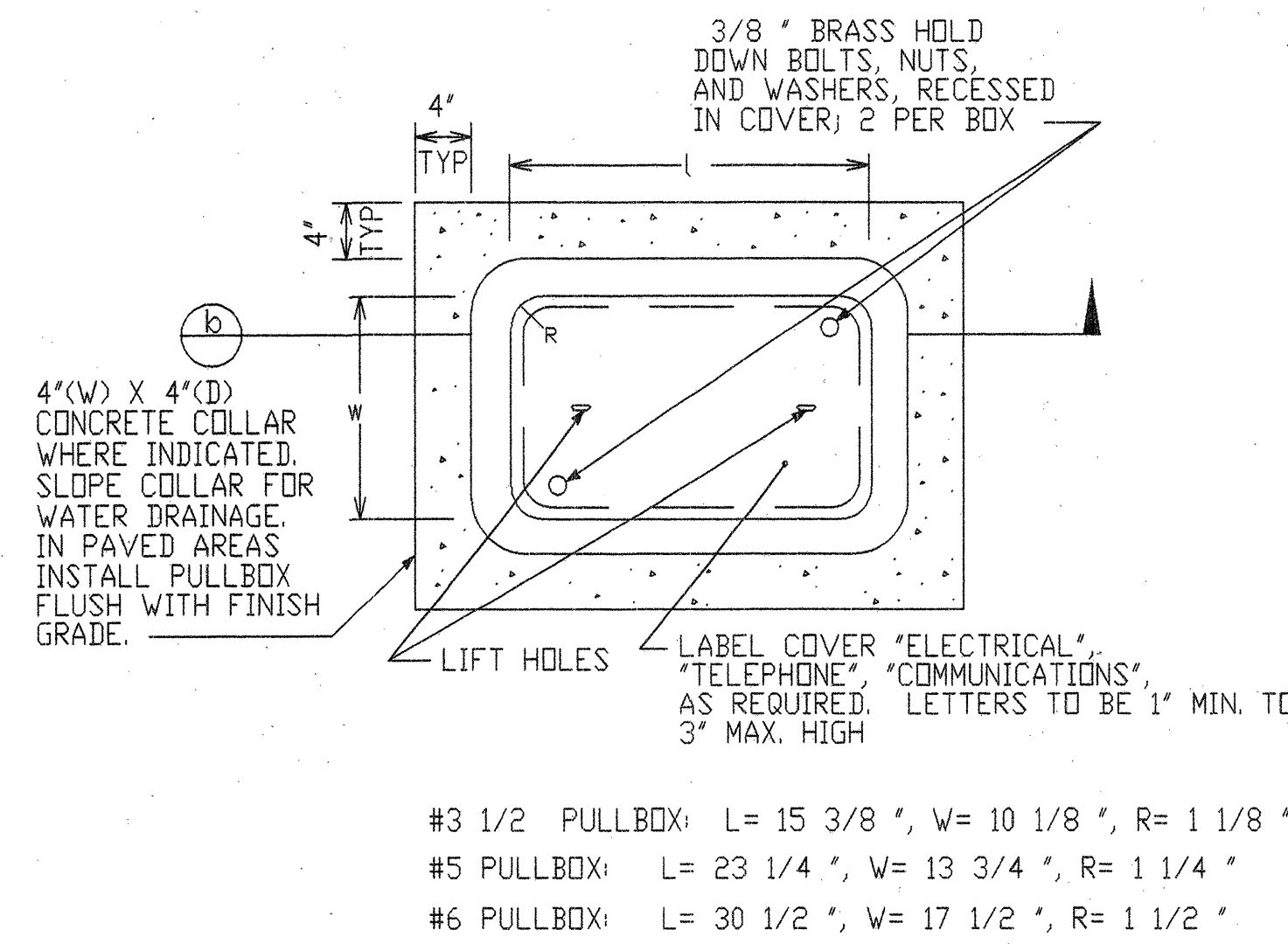
2 SINGLE LINE DIAGRAM
SCALE: SCHEMATIC



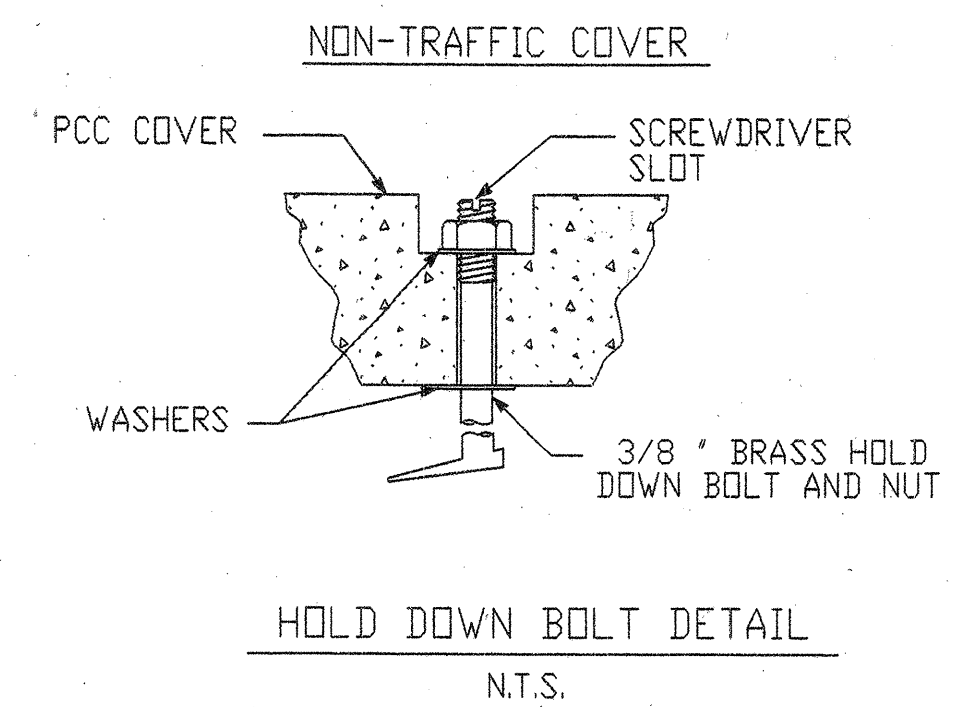
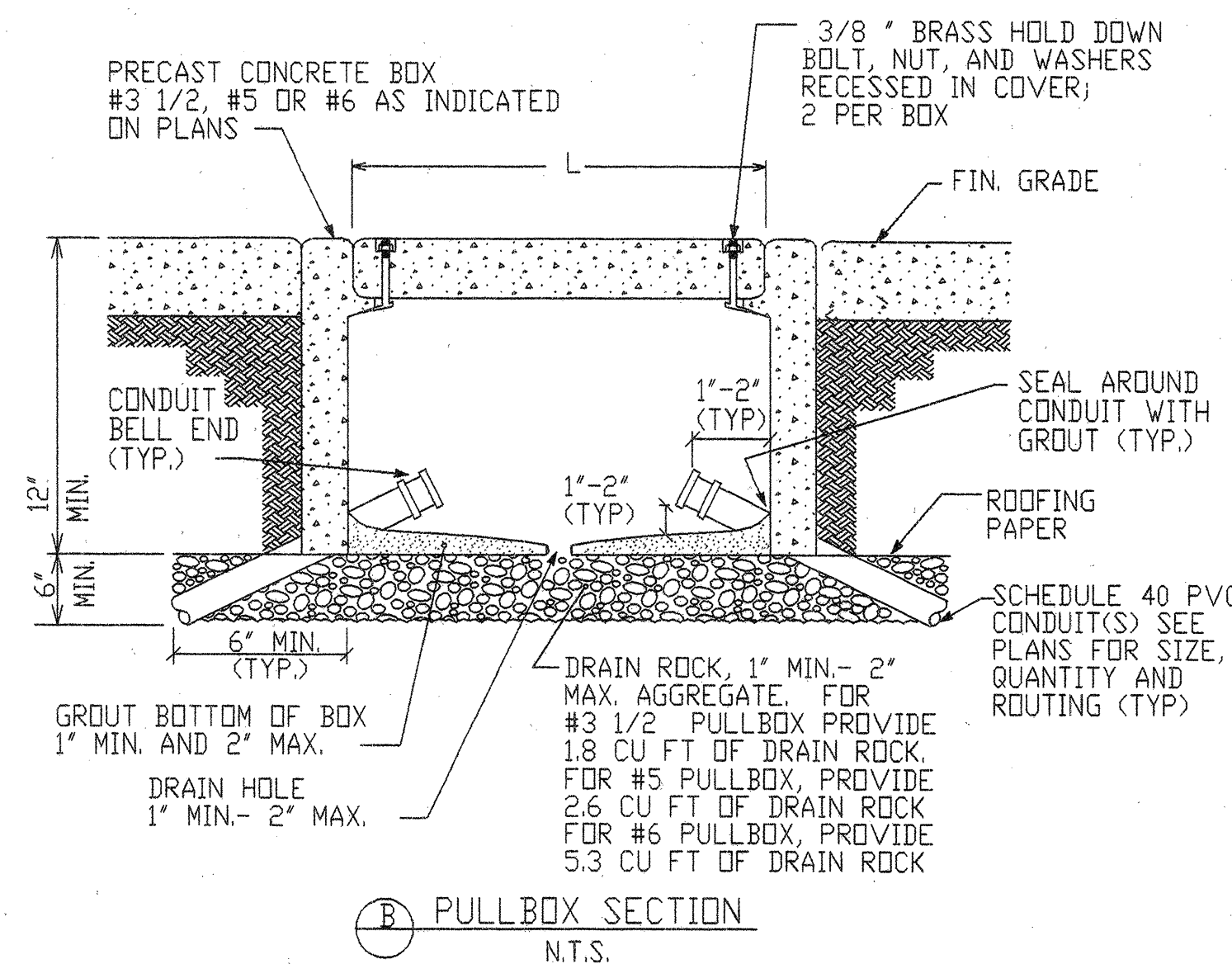
3 TRENCH DETAIL
NO SCALE



1 PARTIAL PLAN - CONDUIT ROUTING TO PORTABLE CLASSROOM
SCALE: NONE



4 CONCRETE PULLBOX DETAIL
NO SCALE

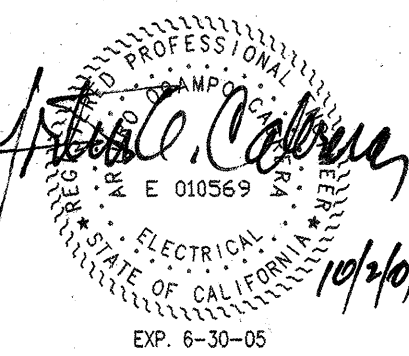


IDENTIFICATION STAMP
DIVISION OF THE STATE ARCHITECT
APPROD 104070
AC 2S FLS SS CA/PT
DATE

LICENSED ARCHITECT
GENE M. SUGIMURA
C 007104
REN. 2/21/02
STATE OF CALIFORNIA
G. M. Sugimura

AC CONSTRUCTION ENGINEERING
ENGINEERING CONSULTANT * MECH. *ELECT. GENERAL CONTRACTOR Lic. #697981
INDUSTRIAL * COMMERCIAL * RESIDENTIAL
4070 Nelson Avenue, Suite C
Concord, California 94520
TEL. #925-609-1660 FAX #925-609-1661

Sugimura & Associates Architects
Architecture • Planning • Interiors
Landscape / Irrigation
2155 South Bascom Ave. Suite 200
Campbell, CA 95008
408-879-0600 Fx 408-377-6066
COPYRIGHT © 2001 Sugimura & Associates/Architects



SINGLE LINE DIAGRAM AND DETAILS
FACILITIES MAINTENANCE CENTER
SKYLINE COLLEGE
3300 COLLEGE DRIVE
SAN BRUNO, CA 94006

REVISIONS		
NO.	ITEM	DATE

CLIENT APPROVAL:

DRAWN BY:	LCC
CHECKED BY:	ACC
JOB NO:	DATE:
2137	10/3/01

E2

OF SHEETS