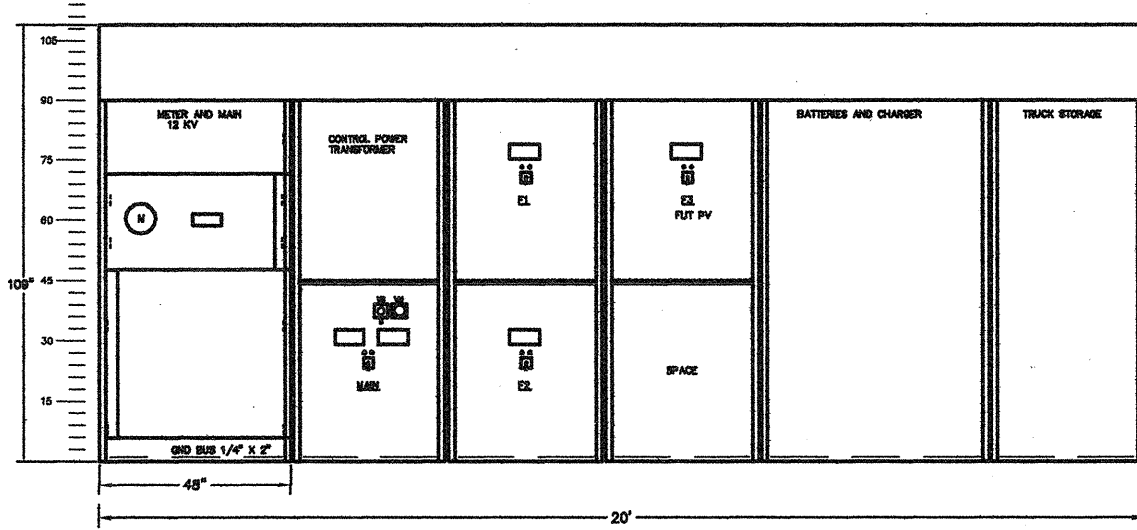


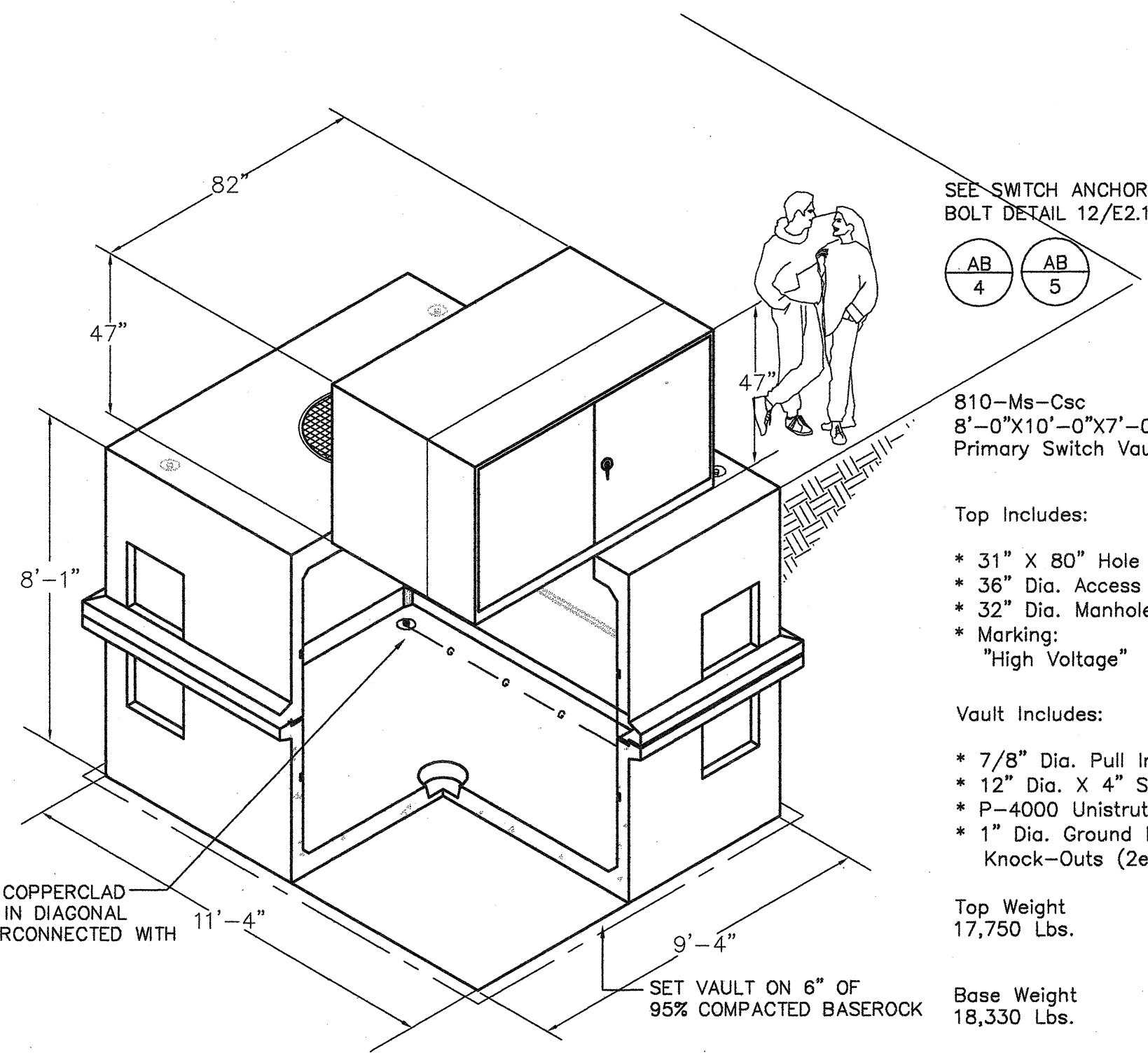
PLAN



ELEVATION

15KV, SERVICE SWITCHGEAR

SCALE: 1/4"=1'-0"



2 PADMOUNT SWITCH AND VAULT

N.T.S.

4'-6"x8'-6"x6'-0" I.D. Precast Concrete Vault Code No. : 04-3376

Cover Adjusts Up To 3" In The Upward Position

Vault Includes:

- 7/8" Dia. Pull Irons (5ea.)
- 14" Dia. X 4" Sump (1ea.)
- 1" Dia. Ground Rod Knock-Outs (2ea.)
- Term-A-Ducts And Knock-Outs Per Current P.D.&E. Specifications

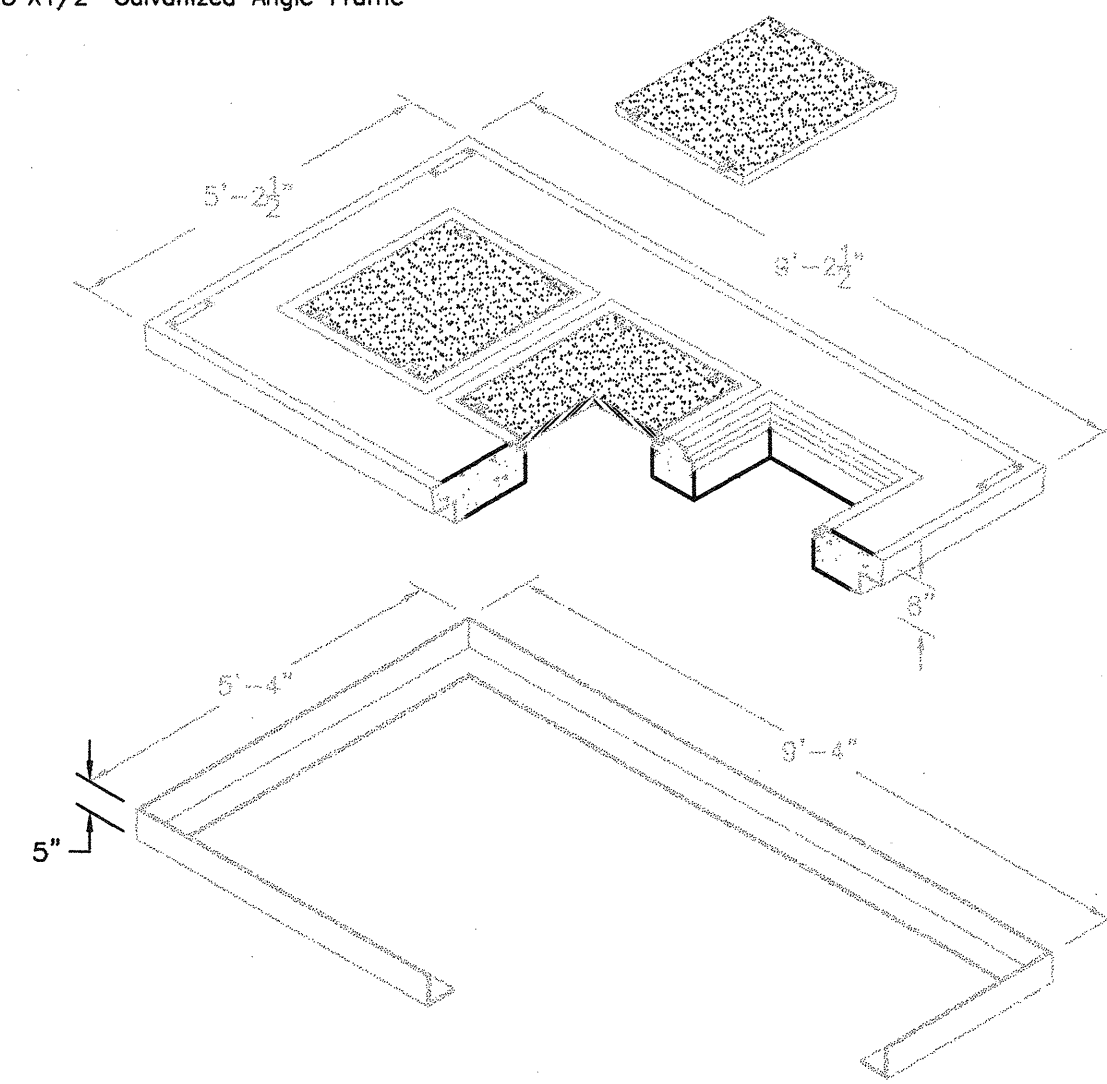
Vault Weight 16,850 Lbs.

Drawing May Not Conform To The Most Current Specification

Heavy Full Traffic Code No. : 04-1443

Cover Includes:

- 24"x28" (Nominal) Frame & Solid Cover Cast-In Flush (3ea.)
- "P.G.&E." Name Plate (1ea.)
- Lexon Number Plates (3ea.)
- 5"x5"x1/2" Galvanized Angle Frame



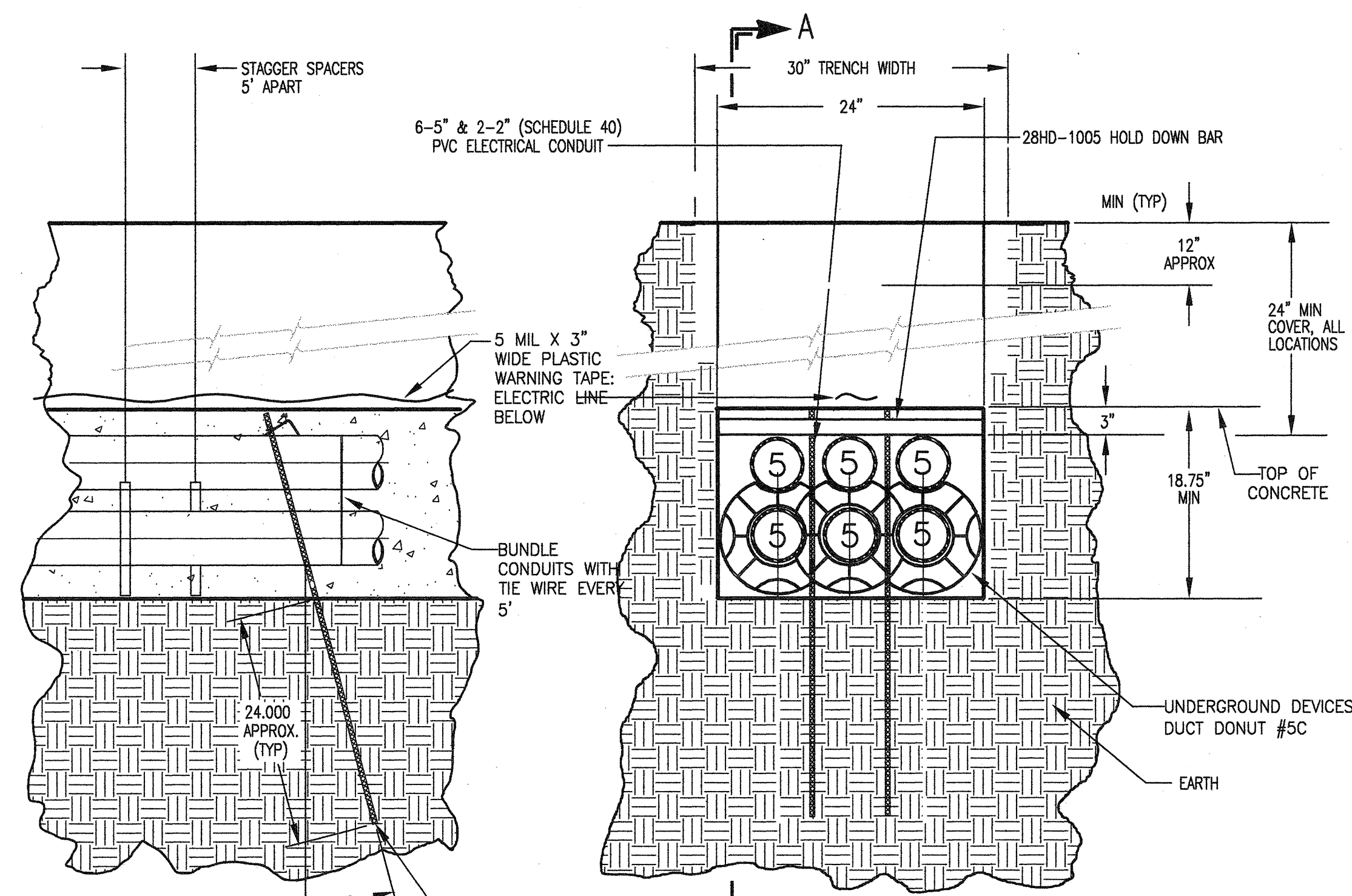
Drawing May Not Conform To The Most Current Specification

3 SUBSURFACE POWER VAULT

N.T.S.

4 FULL TRAFFIC VAULT LID

N.T.S.



SECTION A-A

DRAWING IS FOR TYPICAL DUCT BANK, PROVIDE NUMBER AND TYPE OF CONDUITS AS SHOWN ON PLAN

CONCRETE FOR CONDUIT ENCASEMENT: USE RED CONCRETE CONTAINING FOUR (4) POUNDS RED DYE PER CUBIC YARD, EXCEPT WHERE OTHERWISE SPECIFIED IN CIVIL DRAWINGS, USE CALTRANS CLASS C CONCRETE WITH 1" MAXIMUM AGGREGATE.

5 TYPICAL DUCT BANK SECTION

N.T.S.

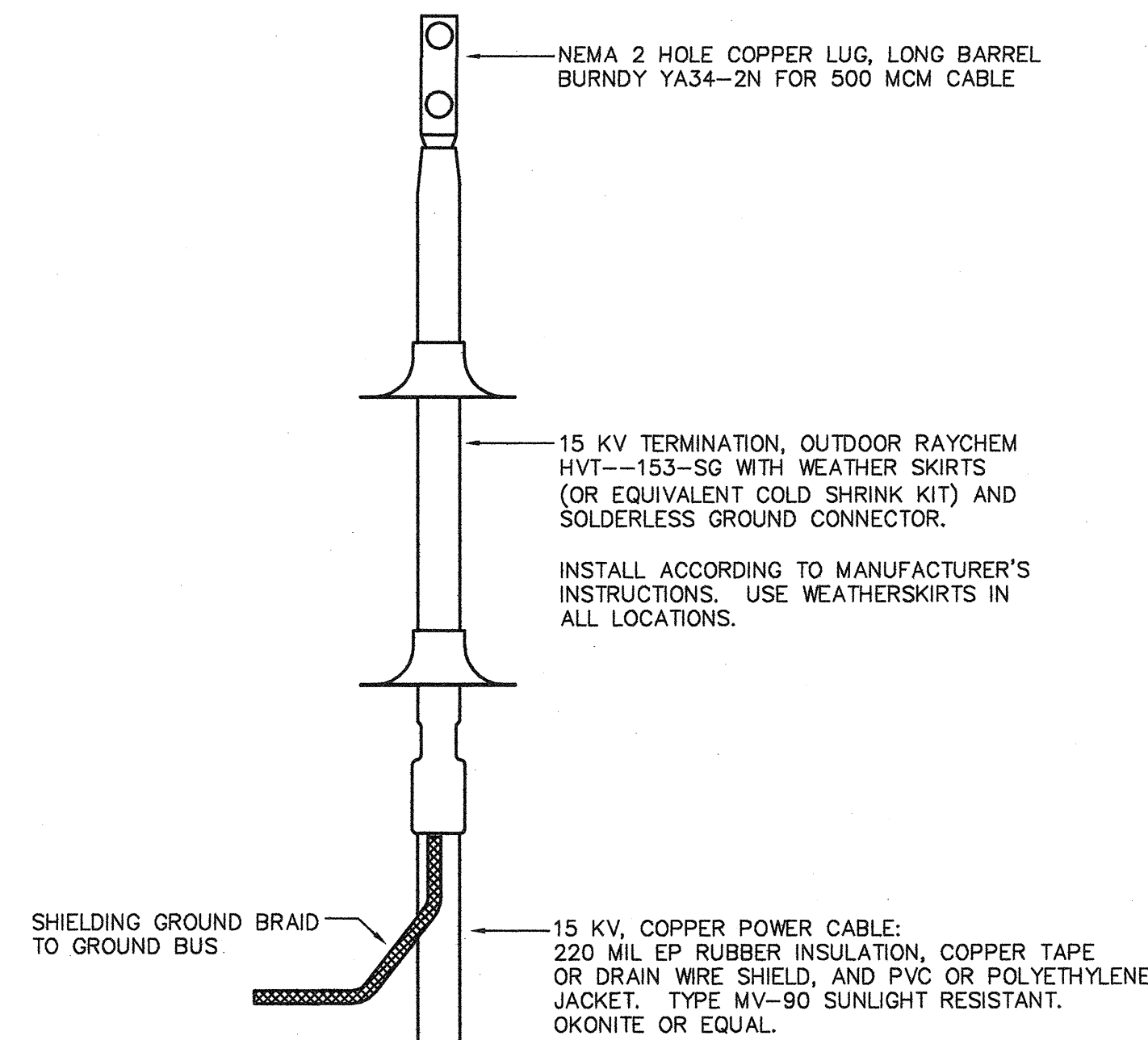
| DESIGNATION | BLDG | UNIT    | ANCHOR DIA | EMBED  | MAX SPACING | ALONG UNIT LENGTH | ALONG UNIT WIDTH | COMMENTS         | WEIGHT  |
|-------------|------|---------|------------|--------|-------------|-------------------|------------------|------------------|---------|
| AB/1        | 30   | MAIN SG | 3/4"       | 4"     | 24"         | 10"               | 10"              | 8 PER SIDE (MIN) | 30,000# |
| AB/2        | 3    | LC1     | 3/4"       | 4"     | 24"         | 12"               | 12"              | 4 PER SIDE (MIN) | 11,400# |
| AB/3        | 16   | LC2     | 3/4"       | 4"     | 24"         | 12"               | 12"              | 4 PER SIDE (MIN) | 12,200# |
| AB/4        | 3    | SW1     | 3/4"       | 3 3/4" | 24"         | 12"               | 12"              | 2 PER SIDE (MIN) | 2,000#  |
| AB/5        | 16   | SW2     | 3/4"       | 3 3/4" | 24"         | 12"               | 12"              | 2 PER SIDE (MIN) | 2,000#  |
| AB/6        | 13   | TRANS   | 3/4"       | 2"     | 24"         | 24"               | 2 PER SIDE (MIN) | 1,000#           |         |

ANCHOR BOLT NOTES

1. USE HILTI KB-TZ BOLTS, INSTALL ACCORDING TO HILTI'S INSTRUCTIONS AT LOCATIONS DESIGNATED BY ELECTRICAL EQUIPMENT MANUFACTURER.
2. SEE STRUCTURAL DRAWINGS FOR TESTING REQUIREMENTS.

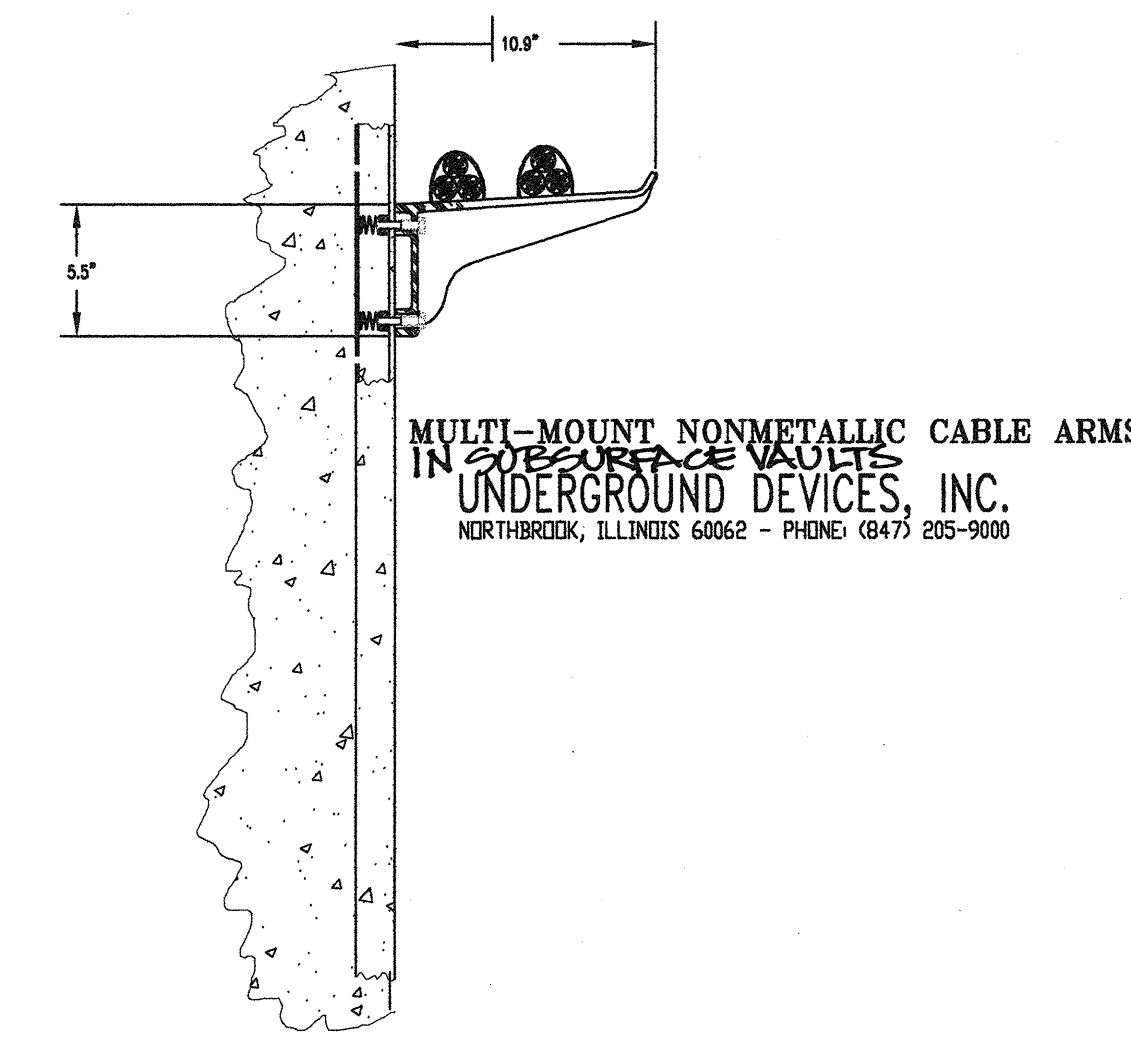
12 ANCHOR BOLT SCHEDULE

N.T.S.



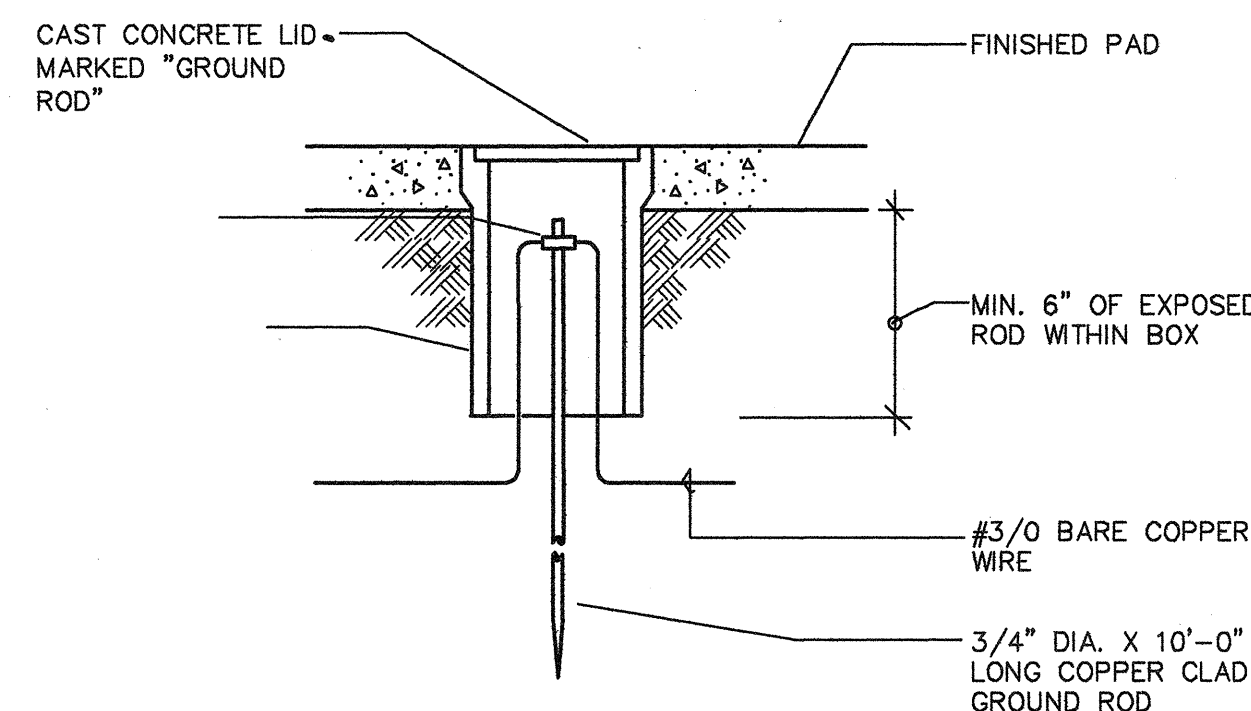
6 15KV, CABLE TERMINATION

N.T.S.



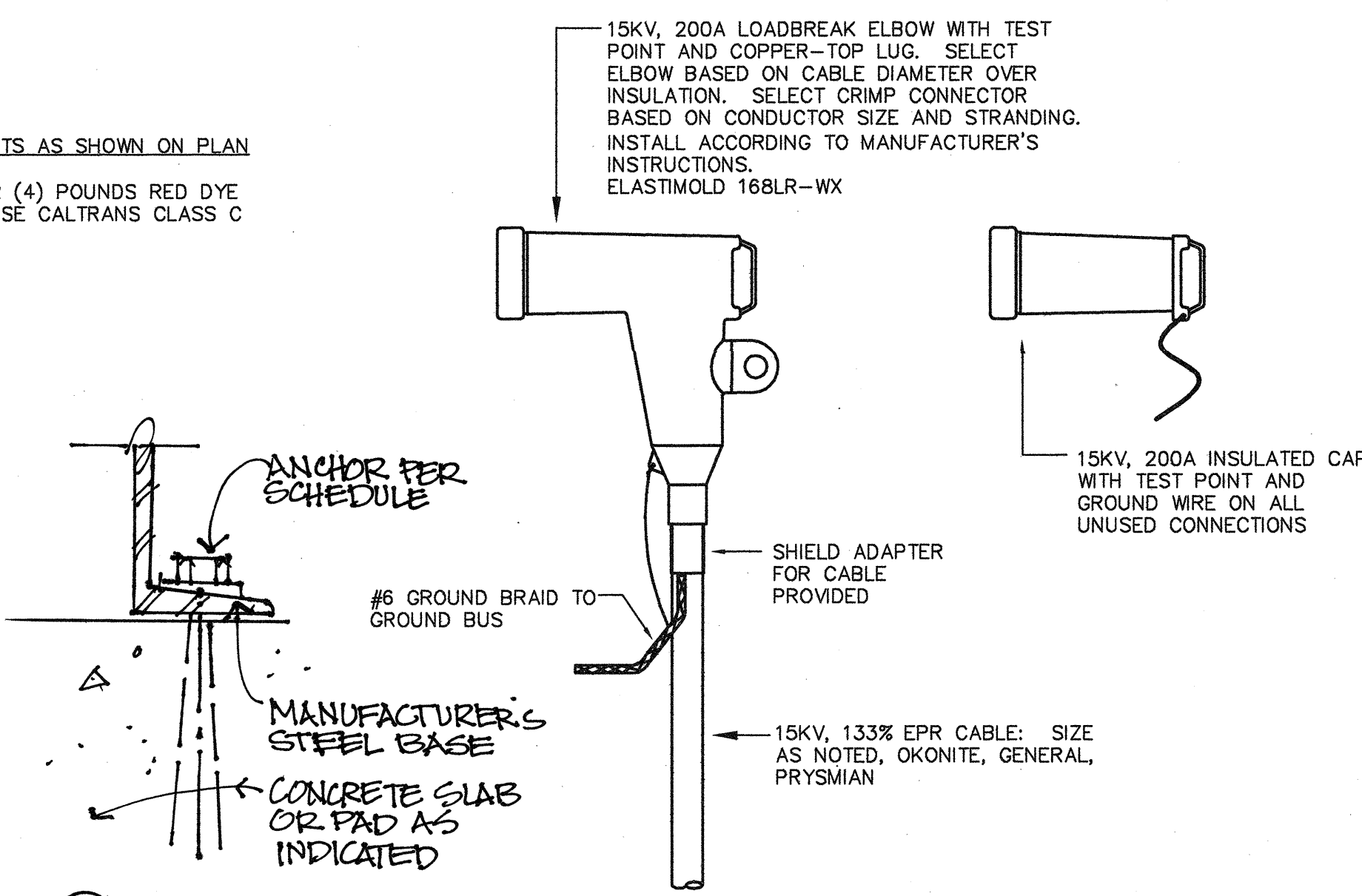
7 NON-METALLIC CABLE RACK

N.T.S.



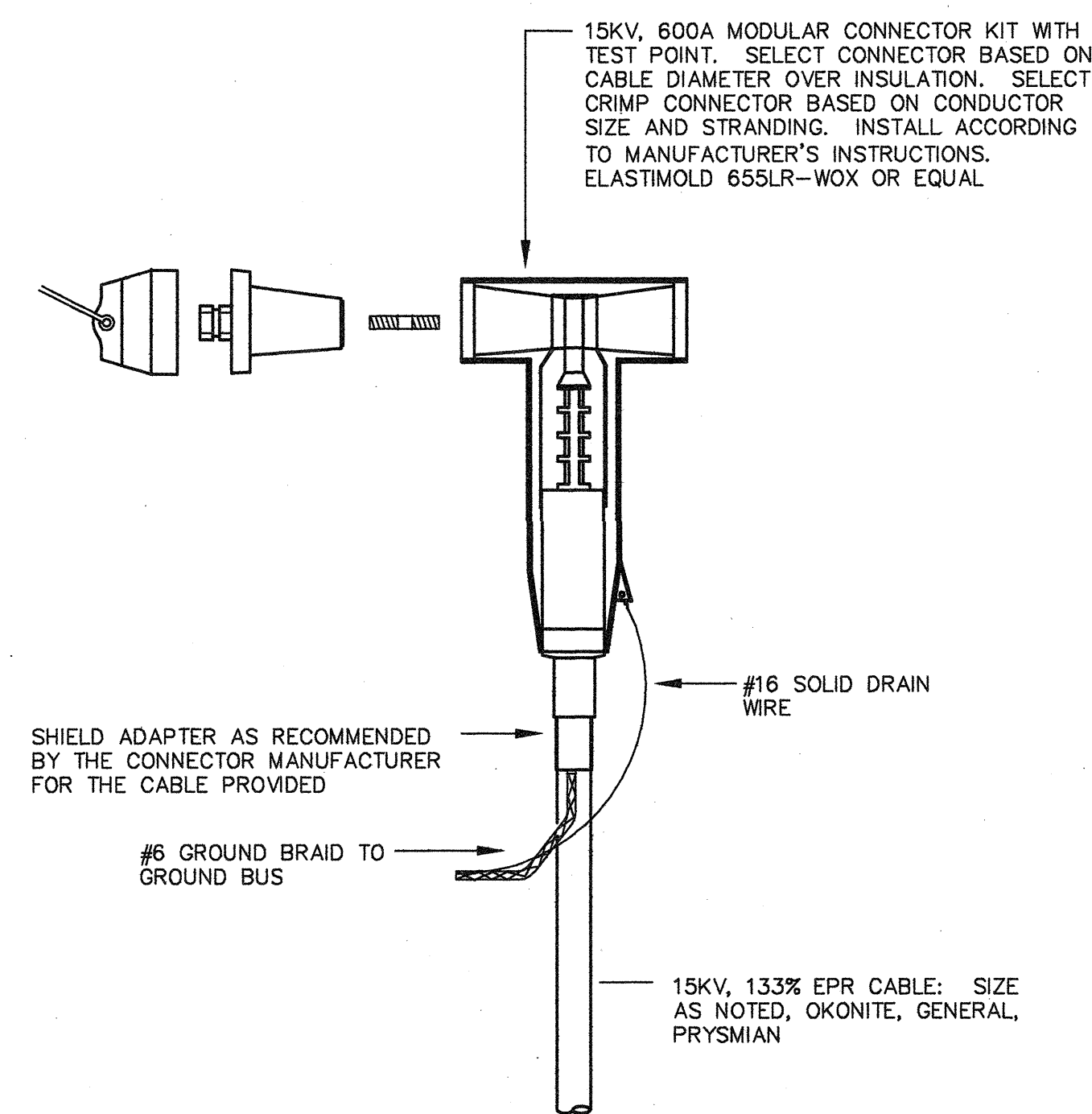
8 GROUND ROD DETAIL

N.T.S.



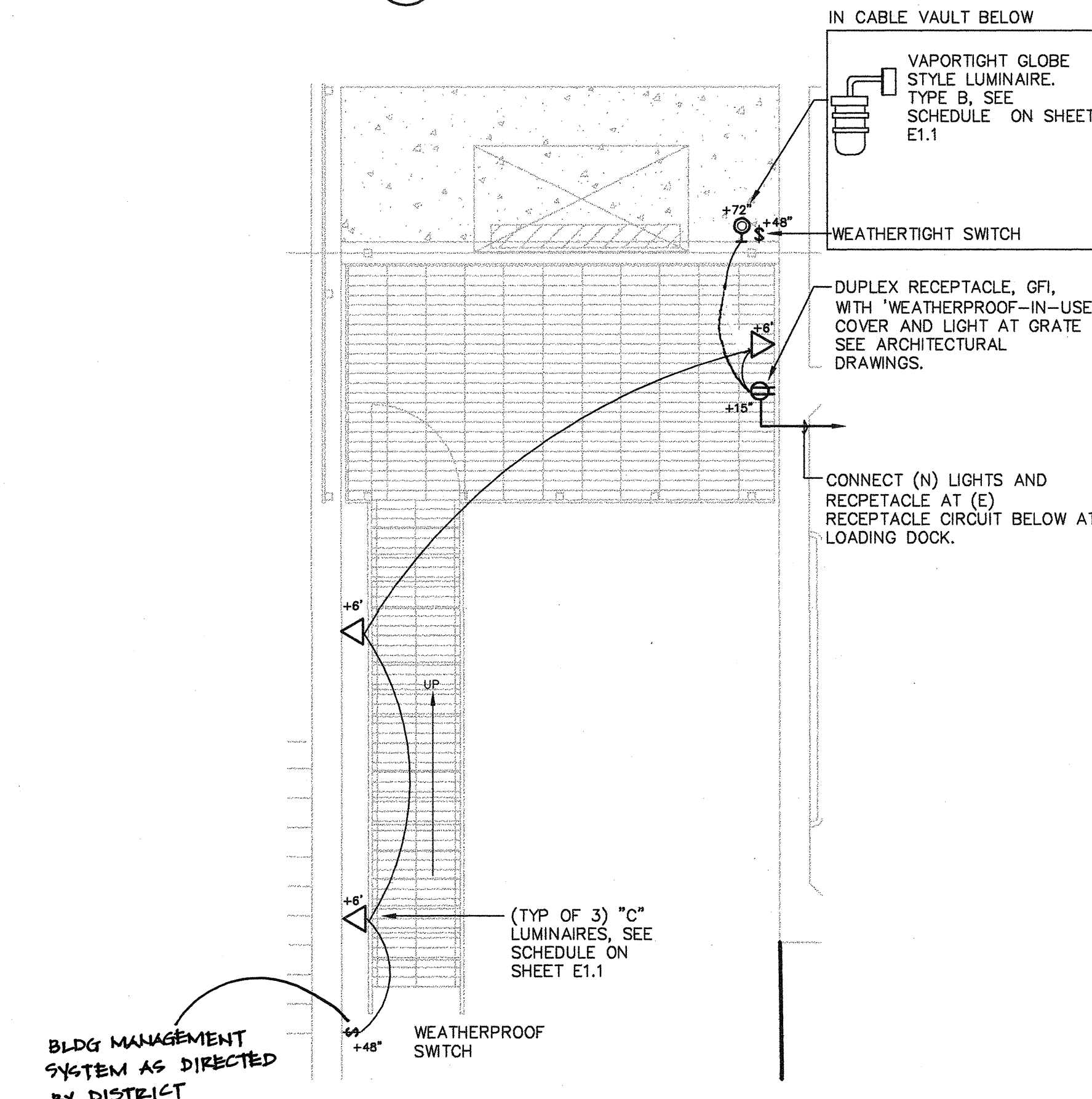
9 15KV, 200A CONNECTOR

N.T.S.



10 15KV, 600A CONNECTOR

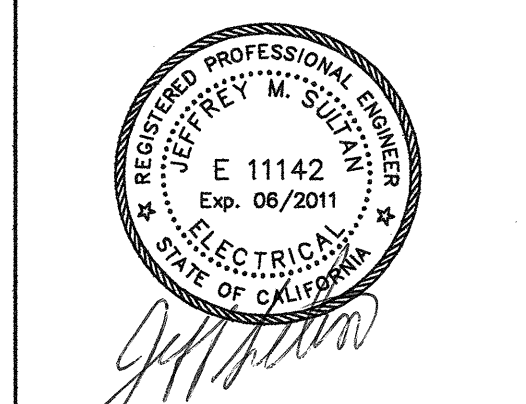
N.T.S.



11 LIGHTING AND POWER AT BLDG. 16

N.T.S.

noll tam architects and planners  
728 Heinz Avenue  
Berkeley, CA 94710  
510.848.8295  
fax 510.848.3008



JEFF SULTAN, P.E.  
ELECTRICAL ENGINEER  
2081 Camino de los Robles  
Menlo Park, CA 94025  
(650) 854-7585  
jeff@inspower.net

IDENTIFICATION STAMP  
DIVISION OF THE STATE ARCHITECT  
APPLICATION NUMBER 01 11618  
AC 02 115 115 115 115 115 115 115  
DATE 2/19/11

CALIFORNIA STATE FIRE MARSHAL APPROVED

APPROVAL OF THIS PLAN DOES NOT AUTHORIZE OR APPROVE ANY DEVIATION OR OMISSION FROM APPLICABLE REGULATIONS. FINAL APPROVAL IS SUBJECT TO FIELD INSPECTION. ONE SET OF APPROVED PLANS SHALL BE AVAILABLE ON THE PROJECT SITE AT ALL TIMES.

CAÑADA COLLEGE  
Electrical Infrastructure Replacement Project

4200 Farm Hill Blvd  
Redwood City, CA 94061

BID SET

SHEET TITLE  
ELECTRICAL DETAILS

| NO. | DATE | DESCRIPTION |
|-----|------|-------------|
|     |      |             |
|     |      |             |
|     |      |             |

DATE January 14, 2011  
DRAWN JS  
CHECKED MM  
SCALE AS NOTED  
JOB NO. 2921.01

SHEET NUMBER  
E2.1