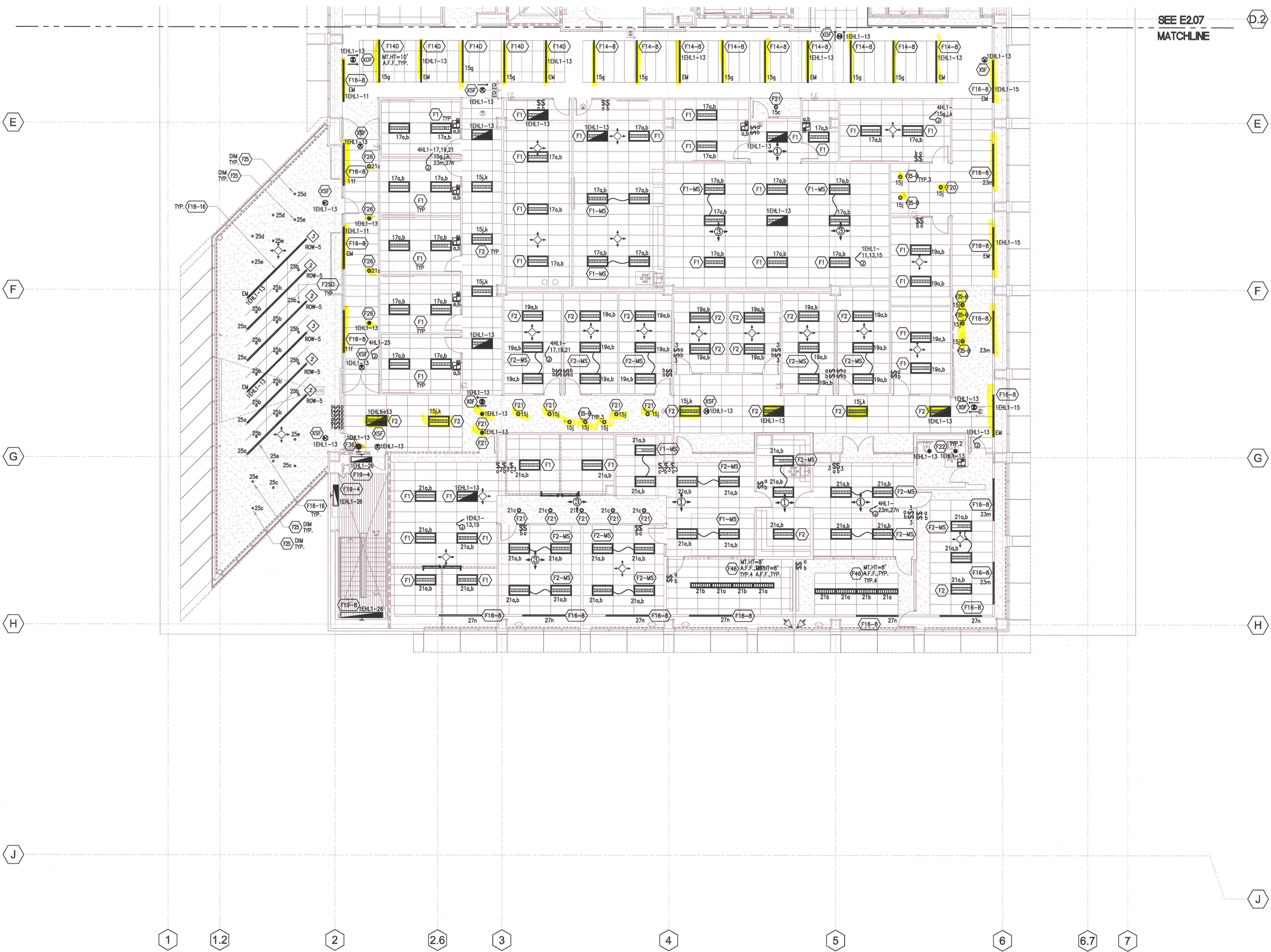


Revision	Description	Date
1	FCO 41 0110095 COORDINATION	07/27/07
2	PROVIDE CHARTER	07/27/07
3	REVISE CHARTER	07/27/07
4	REVISE CHARTER	07/27/07
5	REVISE CHARTER	07/27/07
6	REVISE CHARTER	07/27/07
7	REVISE CHARTER	07/27/07
8	REVISE CHARTER	07/27/07
9	REVISE CHARTER	07/27/07
10	REVISE CHARTER	07/27/07

Revision	Description	Date
1	100% Design Development	06/08/08
2	50% Construction Documents	07/08/08
3	50% Construction Documents	08/18/08
4	50% Construction Documents	10/08/08
5	50% Construction Documents	03/11/09
6	ELECTRICAL CHANGES PER ARCHIT	07/28/09
7	FCO 014	08/05/09
8	FCO 014	08/05/09
9	FCO 014	08/05/09
10	FCO 014	08/05/09

Job No.	Date
March 2009	
Checked by	
Scale	
Lighting Plan Level 4 - South	
E2.08-R1	

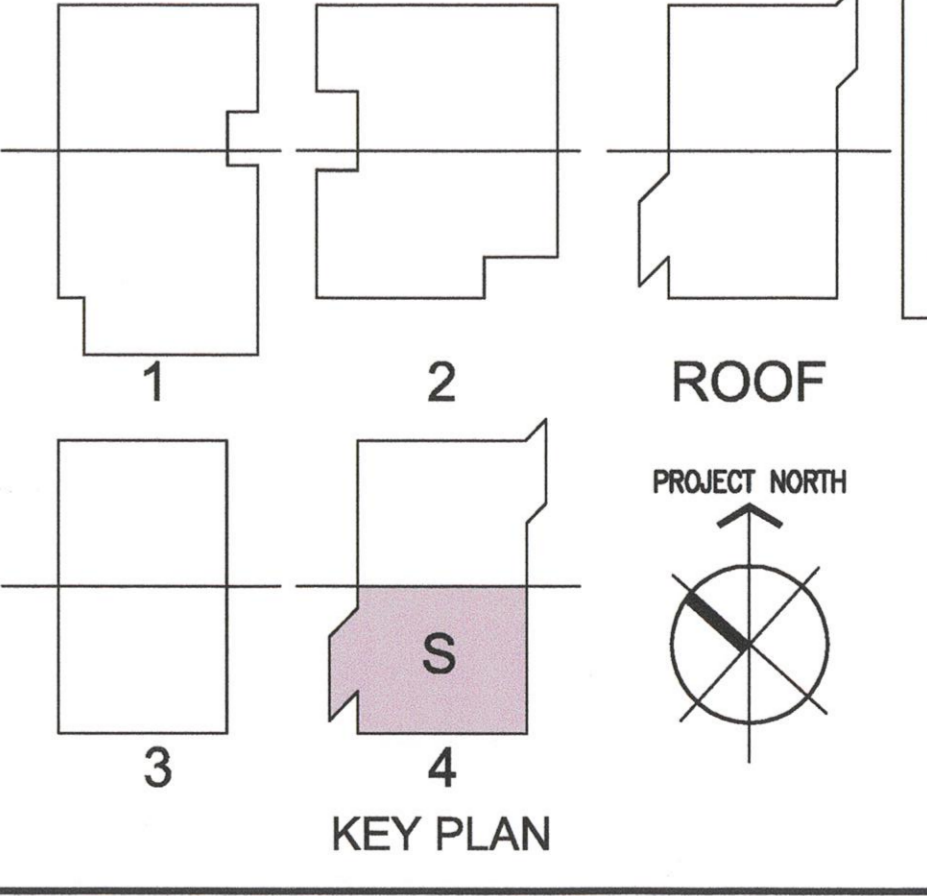


1 Lighting Plan - Level 4 - South
E2.08 SCALE: 1/8" = 1'-0"

SHEET NOTES

- NOT USED.
- NORMAL POWER FEED END.
- EMERGENCY POWER FEED END.

- GENERAL NOTES**
- ALL 277V, NORMAL LIGHTING DEVICES SHALL BE CIRCUITED TO PANEL "4HL1", U.O.N.
 - ALL 277V, EMERGENCY LIGHTING DEVICES SHALL BE CIRCUITED THRU EMERGENCY LIGHTING INVERTER, TO PANEL "1EH1", U.O.N.
 - ALL 120V, NORMAL LIGHTING DEVICES SHALL BE CIRCUITED TO PANEL "4LN21/4LN22", U.O.N.
 - REVISION OF V.P. SUITE (FCO 039-R1) WILL ENTAIL A REVIEW OF TITLE 24 AND DUE TO CHANGE IN LIGHTING FIXTURE COUNT AND LTG POWER DENSITY.



DRAWING OF RECORD
ROSENBLIN ELECTRIC, INC.
DATE: 01-21-2011