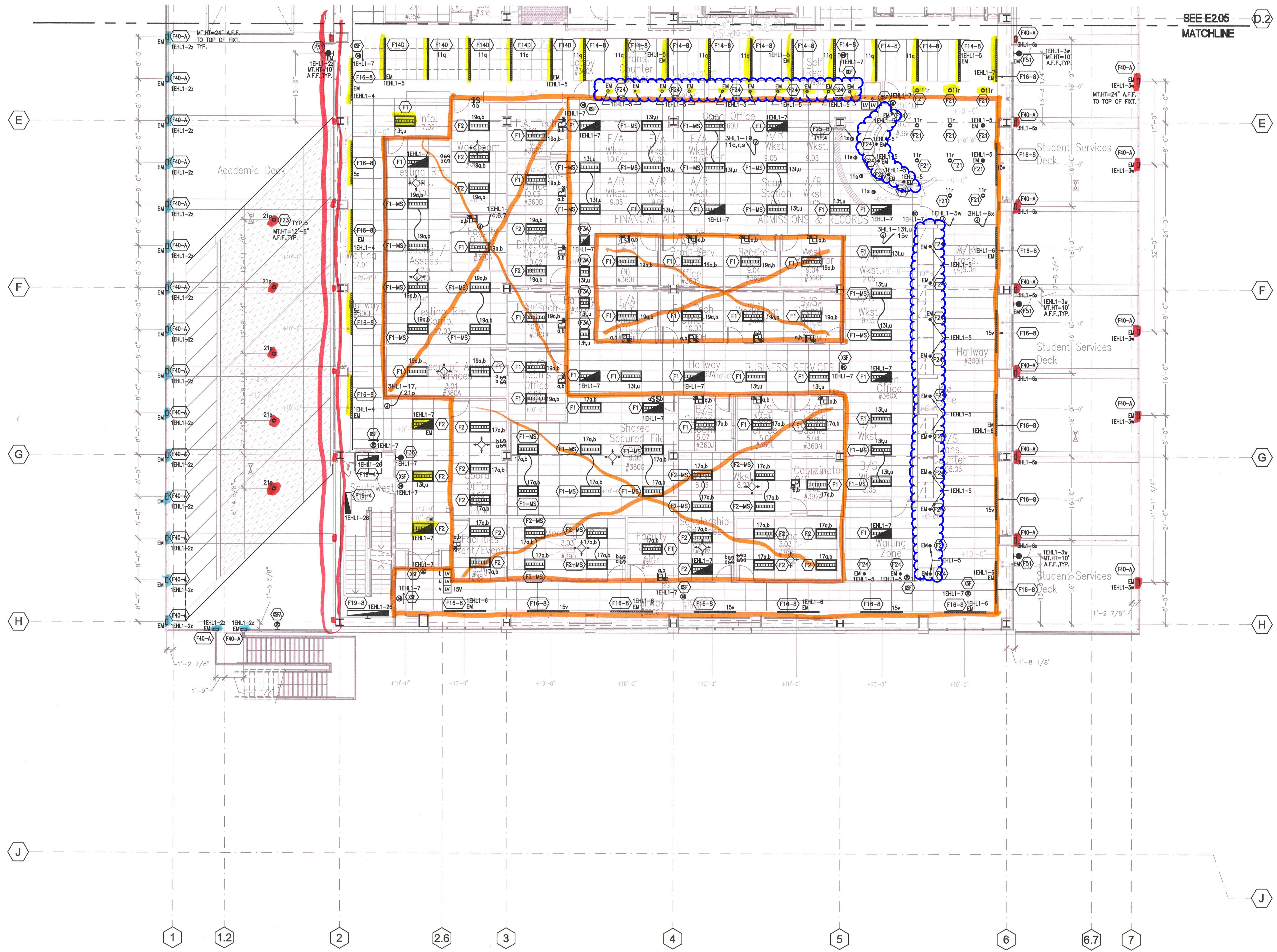


Revision	Description	Date
1	PROVIDE CWA ARE SIGN	07/27/09
2	REVISIONS TO PANEL SCHEDULES	07/27/09
3	DATA CDD BY CONFIRMED B4	08/04/09
4	3RD FLOOR FINANCIAL AID CHANGES	08/04/09
5	4TH FLOOR FINANCIAL AID CHANGES	08/04/09
6	4TH FLOOR FINANCIAL AID CHANGES	08/04/09
7	ELECTRICAL DRAWINGS OF RECORD	01/21/11

Revision	Description	Date
1	100% Design Development	07/27/09
2	50% Construction Documents	07/27/09
3	DATA SUBMITTAL	09/15/09
4	50% Construction Documents	12/04/09
5	DATA FINAL	03/11/10
6	ELECTRICAL CHANGES PER ARCHIT	07/28/09
7	ELECTRICAL CHANGES PER ARCHIT	07/28/09
8	ELECTRICAL CHANGES PER ARCHIT	08/04/09
9	ELECTRICAL CHANGES PER ARCHIT	08/04/09
10	ELECTRICAL CHANGES PER ARCHIT	08/04/09
11	ELECTRICAL CHANGES PER ARCHIT	08/04/09
12	ELECTRICAL CHANGES PER ARCHIT	08/04/09
13	ELECTRICAL CHANGES PER ARCHIT	08/04/09
14	ELECTRICAL CHANGES PER ARCHIT	08/04/09
15	ELECTRICAL CHANGES PER ARCHIT	08/04/09
16	ELECTRICAL CHANGES PER ARCHIT	08/04/09
17	ELECTRICAL CHANGES PER ARCHIT	08/04/09
18	ELECTRICAL CHANGES PER ARCHIT	08/04/09
19	ELECTRICAL CHANGES PER ARCHIT	08/04/09
20	ELECTRICAL CHANGES PER ARCHIT	08/04/09

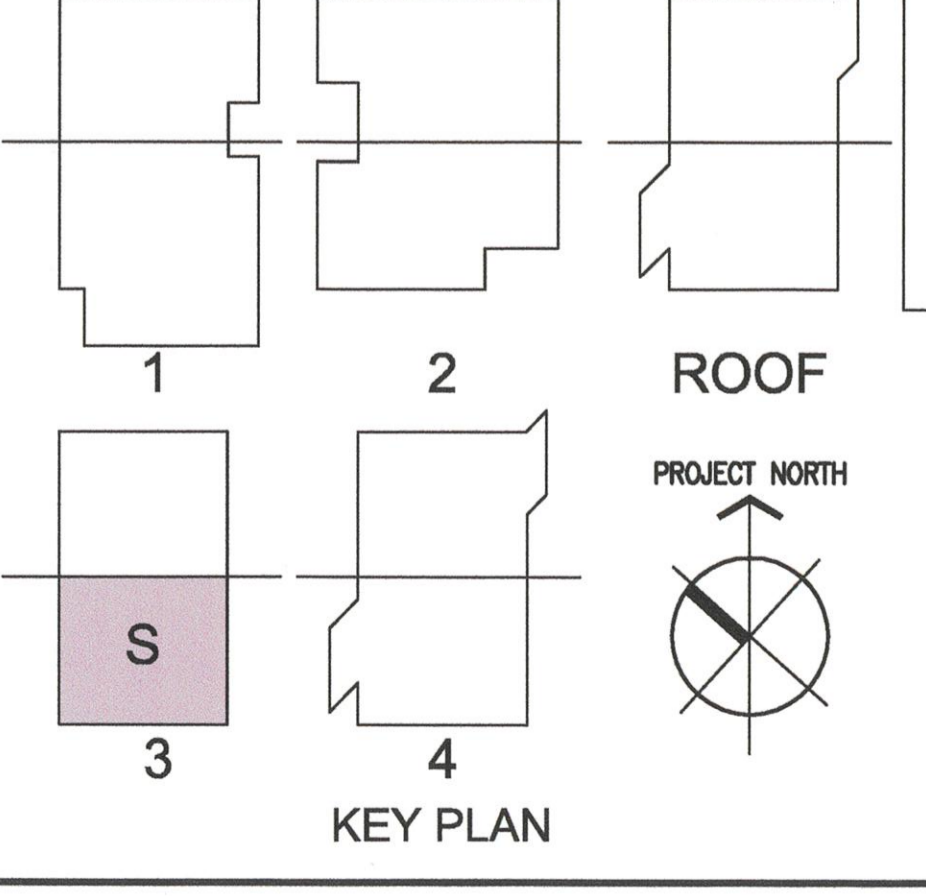
Job No.	March 2009
Date	
Drawn by	
Checked by	
Scale	
LIGHTING PLAN LEVEL 3 - SOUTH	
<b>E2.06</b>	



1 Lighting Plan - Level 3 - South  
E2.06 SCALE: 1/8" = 1'-0"

**GENERAL NOTES**

- ALL 277V, NORMAL LIGHTING DEVICES SHALL BE CIRCUITED TO PANEL "3HL1", U.O.N.
- ALL 277V, EMERGENCY LIGHTING DEVICES SHALL BE CIRCUITED THRU EMERGENCY LIGHTING INVERTER TO PANEL "3EHL1", U.O.N.
- ALL 120V, NORMAL LIGHTING DEVICES SHALL BE CIRCUITED TO PANEL "3UN21/3UN22", U.O.N.
- ROUTE EXTERIOR LIGHTING VIA LCP AND PHOTOSENSOR MOUNTED ON ROOF FACING NORTH. CONTROLS SHALL BE INTERFACED WITH BMS.



**LEGEND: OCCUPANCY SENSORS**

DT-300  
PW-200

**DRAWING OF RECORD**  
ROSENBLIN ELECTRIC, INC.  
DATE: 01-21-2011