

Revision	Description	Date
1	ISSUE FOR PERMIT	02/27/10
2	100% DESIGN DEVELOPMENT	03/02/10
3	PROVIDE OWNER REVIEW	03/02/10
4	100% DESIGN DEVELOPMENT	03/02/10
5	100% DESIGN DEVELOPMENT	03/02/10
6	100% DESIGN DEVELOPMENT	03/02/10
7	100% DESIGN DEVELOPMENT	03/02/10
8	100% DESIGN DEVELOPMENT	03/02/10
9	100% DESIGN DEVELOPMENT	03/02/10
10	100% DESIGN DEVELOPMENT	03/02/10

Revision	Description	Date
1	ISSUE FOR PERMIT	02/27/10
2	100% DESIGN DEVELOPMENT	03/02/10
3	PROVIDE OWNER REVIEW	03/02/10
4	100% DESIGN DEVELOPMENT	03/02/10
5	100% DESIGN DEVELOPMENT	03/02/10
6	100% DESIGN DEVELOPMENT	03/02/10
7	100% DESIGN DEVELOPMENT	03/02/10
8	100% DESIGN DEVELOPMENT	03/02/10
9	100% DESIGN DEVELOPMENT	03/02/10
10	100% DESIGN DEVELOPMENT	03/02/10

Job No.	Date
000000	March 2009
000000	
000000	
000000	
000000	
000000	
000000	
000000	
000000	
000000	

LIGHTING PLAN  
LEVEL 1 - SOUTH  
**E2.02**



**GENERAL NOTES**

- ALL 277V, NORMAL LIGHTING DEVICES SHALL BE CIRCUITED TO PANEL "1HL1", U.O.N.
- ALL 277V, EMERGENCY LIGHTING DEVICES SHALL BE CIRCUITED THRU EMERGENCY LIGHTING INVERTER TO PANEL "1EHL1", U.O.N.
- ALL 120V, NORMAL LIGHTING DEVICES SHALL BE CIRCUITED TO PANEL "1LN11/1LN12", U.O.N.

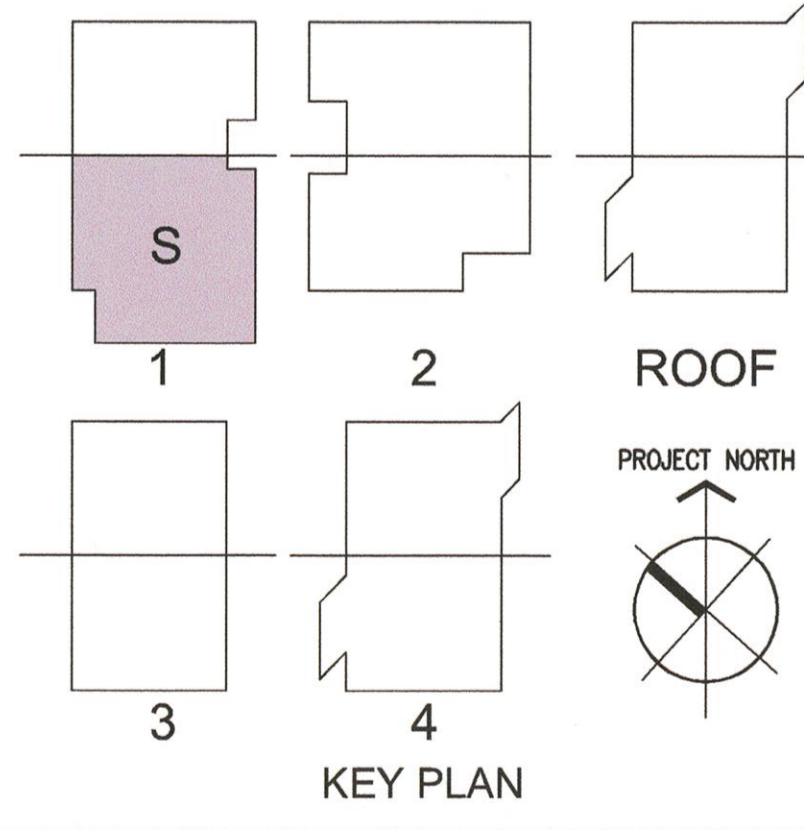
**SHEET NOTES**

- STUDIO DIMMER PANEL TO CONTROL WIREMOLD RECEPTACLES ON STUDIO LIGHTING GRID.
- WIREMOLD 64000 RACEWAY WITH 20A, 120V RECEPTACLE AS SHOWN. MOUNT TO LIGHTING GRID, ROUTE 120V CIRCUITRY THROUGH STUDIO DIMMER PANEL.
- EXTERIOR LIGHT FIXTURES SHALL BE CONTROLLED VIA LCP AND BY PHOTOCELL LOCATED ON BUILDING ROOF FACING NORTH. CONTROLS SHALL BE INTERFACED WITH THE BMS.

**LEGEND: OCCUPANCY SENSORS**

DT-300  
PW-200

**DRAWING OF RECORD**  
ROSENBLIN ELECTRIC, INC.  
DATE: 01-24-2011



**1** Lighting Plan - Level 1 - South  
SCALE: 1/8" = 1'-0"