

PROJECT: 2007-0731  
CONTACT: Valeria Torres

**INTERFACE**  
ENGINEERING

717 Market Street  
Suite 500  
San Francisco, CA 94103  
TEL: 415.489.7240  
FAX: 415.489.7289  
www.interfaceengineering.com

ARCHITECT: ENGINEER

**REGISTERED ARCHITECT**  
No. C11864  
Exp. 03/31/09  
STATE OF CALIFORNIA

**REGISTERED PROFESSIONAL ENGINEER**  
No. E16805  
Exp. 03/31/09  
STATE OF CALIFORNIA

- GENERAL NOTES
1. This sheet is part of a set and is not to be used alone.
  2. This sheet is not to be used for construction unless the architect's stamp and signature appear on the drawing and the title block indicates drawings have been released for construction.
  3. These plans and prints formed as instruments of service, are owned by the architect and are for use on the project only. Reproduction and/or distribution without the prior written consent of the architect is forbidden.
  4. Copyright © Bunton Clifford Associates, 2007

REMARKS	DATE
▲ ADDENDUM NO. 1	08/29/08
▲ ADDENDUM NO. 2	11/06/09

DRAWING STATUS	DATE
● DSA PLAN CHECK	08/29/08
● DSA BACK CHECK	01/22/09
● BIDDING (BID #665531)	09/18/09
○ CONSTRUCTION	

FILE NO. 41-C1

IDENTIFICATION STAMP  
DIV. OF THE STATE ARCHITECT

01- 110074

AC. PLS. SS

DATE

**BUILDINGS 5 & 6  
RENOVATIONS**

San Mateo County Community  
College District

**BID ADDENDA**

APPROVED  
BY THE STATE ARCHITECT  
AC 511, FLS. 66, SS. 16  
APPL. NO. 110074, DATE 5/20/10

**CAÑADA COLLEGE**  
4200 Farm Hill Boulevard  
Redwood City, CA 94061

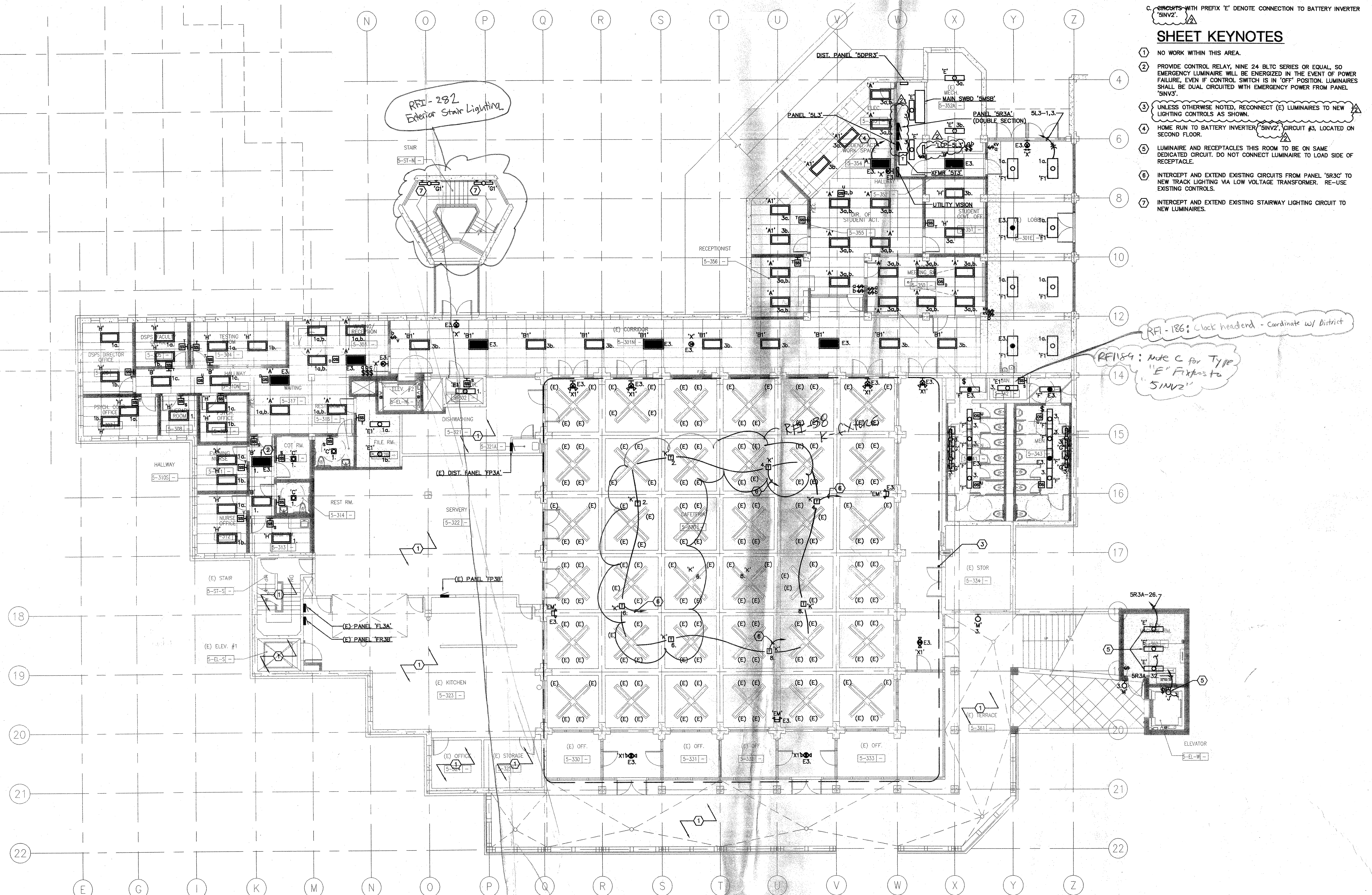
THIRD FLOOR PLAN  
- LIGHTING

**GENERAL SHEET NOTES**

- COORDINATE EXACT LOCATION AND MOUNTING HEIGHT OF LUMINAIRES AND LIGHTING CONTROLS WITH ARCHITECT PRIOR TO INSTALLATION.
- LUMINAIRES SHOWN ON THIS SHEET TO BE CIRCUITED TO PANEL 'SLC3' UNLESS OTHERWISE NOTED.
- CIRCUITS WITH PREFIX 'E' DENOTE CONNECTION TO BATTERY INVERTER '5INV2'.

**SHEET KEYNOTES**

1. NO WORK WITHIN THIS AREA.
2. PROVIDE CONTROL RELAY, NINE 24 BLTC SERIES OR EQUAL, SO EMERGENCY LUMINAIRE WILL BE ENERGIZED IN THE EVENT OF POWER FAILURE, EVEN IF CONTROL SWITCH IS IN 'OFF' POSITION. LUMINAIRES SHALL BE DUAL CIRCUITED WITH EMERGENCY POWER FROM PANEL '5INV3'.
3. UNLESS OTHERWISE NOTED, RECONNECT (E) LUMINAIRES TO NEW LIGHTING CONTROLS AS SHOWN.
4. HOME RUN TO BATTERY INVERTER '5INV2', CIRCUIT #3, LOCATED ON SECOND FLOOR.
5. LUMINAIRE AND RECEPTACLES THIS ROOM TO BE ON SAME DEDICATED CIRCUIT. DO NOT CONNECT LUMINAIRE TO LOAD SIDE OF RECEPTACLE.
6. INTERCEPT AND EXTEND EXISTING CIRCUITS FROM PANEL 'SR3C' TO NEW TRACK LIGHTING VIA LOW VOLTAGE TRANSFORMER. RE-USE EXISTING CONTROLS.
7. INTERCEPT AND EXTEND EXISTING STAIRWAY LIGHTING CIRCUIT TO NEW LUMINAIRE.



**1 THIRD FLOOR PLAN - LIGHTING**  
SCALE: 1/8"=1'-0"