

REMARKS	DATE
ADDENDUM NO. 1	09/18/09
ADDENDUM NO. 2	11/09/09

REVISION HISTORY	DATE
REVISION 1	08/28/09
REVISION 2	01/22/09
REVISION 3	09/18/09

FILE NO.	DATE
41-C1	08/28/09
	01/22/09
	09/18/09

**BUILDINGS 5 & 6
RENOVATIONS**

San Mateo County Community
College District

BID ADDENDA

APPROVED BY THE STATE ARCHITECT
AC 111 FLS SB SS JS
APPL NO. 110074 DATE 5/24/10

CAÑADA COLLEGE
4200 Farm Hill Boulevard
Redwood City, CA 94061

FIRST FLOOR PLAN
- LIGHTING

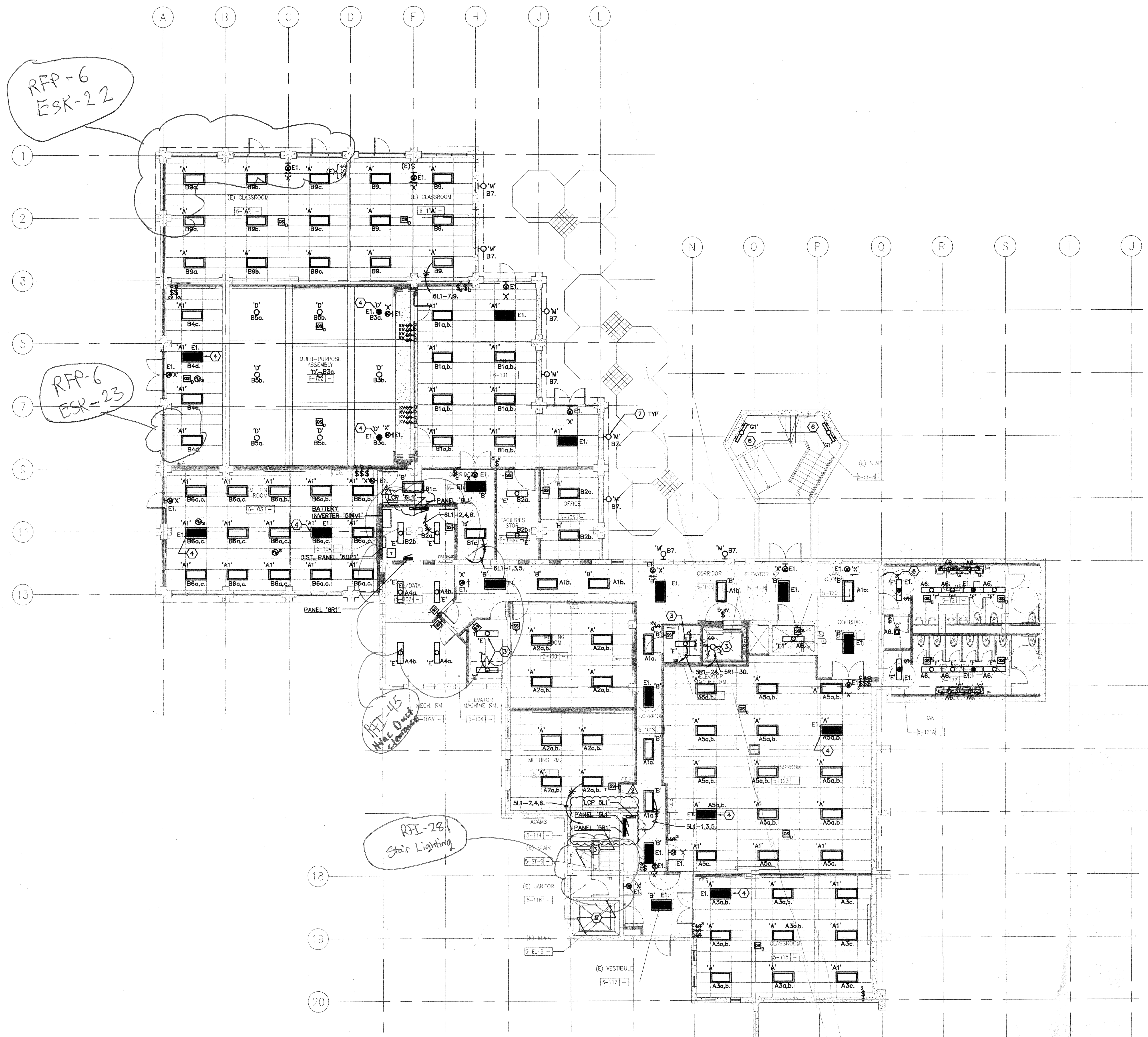
Date 08/29/08
Scale AS NOTED
Project Number 07013
Drawing Number **E2.1**

GENERAL SHEET NOTES

- A. COORDINATE EXACT LOCATION AND MOUNTING HEIGHT OF LUMINAIRES AND LIGHTING CONTROLS WITH ARCHITECT PRIOR TO INSTALLATION.
- B. CIRCUITS SHOWN WITH PREFIX 'A' DENOTES CONNECTION TO PANEL 'SL1'.
- C. CIRCUITS SHOWN WITH PREFIX 'B' DENOTES CONNECTION TO PANEL 'BL1'.
- D. CIRCUITS SHOWN WITH PREFIX 'E' DENOTES CONNECTION PANEL 'SINV1'.

SHEET KEYNOTES

- 1. DISCONNECT (E) LUMINAIRE AND RECONNECT TO CIRCUIT AS SHOWN.
- 2. NOT USED.
- 3. LUMINAIRES AND RECEPTACLES THIS ROOM TO BE ON SAME DEDICATED CIRCUIT. DO NOT CONNECT LUMINAIRE TO LOAD SIDE OF GF1 RECEPTACLE.
- 4. PROVIDE CONTROL RELAY, NINE 24 BLTC SERIES OR EQUAL, SO EMERGENCY LUMINAIRE WILL BE ENERGIZED IN THE EVENT OF POWER FAILURE, EVEN IF CONTROL SWITCH IS IN 'OFF' POSITION. LUMINAIRE SHALL BE DUAL CIRCUITED WITH EMERGENCY POWER FROM PANEL 'SINV1'.
- 5. INTERCEPT AND EXTEND EXISTING ELEVATOR PIT CIRCUIT AND CONNECT COMPLETE TO PANEL 'SR1' TO PLACE INTO SERVICE.
- 6. INTERCEPT AND EXTEND EXISTING STAIRWAY LIGHTING CIRCUIT TO NEW LUMINAIRES.
- 7. MOUNT LUMINAIRES AT 13"-4" AFF.
- 8. HOMERUN TO BATTERY INVERTER 'SINV1', CIRCUIT #1, LOCATED ON THE FIRST FLOOR.



1 FIRST FLOOR PLAN - LIGHTING
SCALE: 1/8"=1'-0"