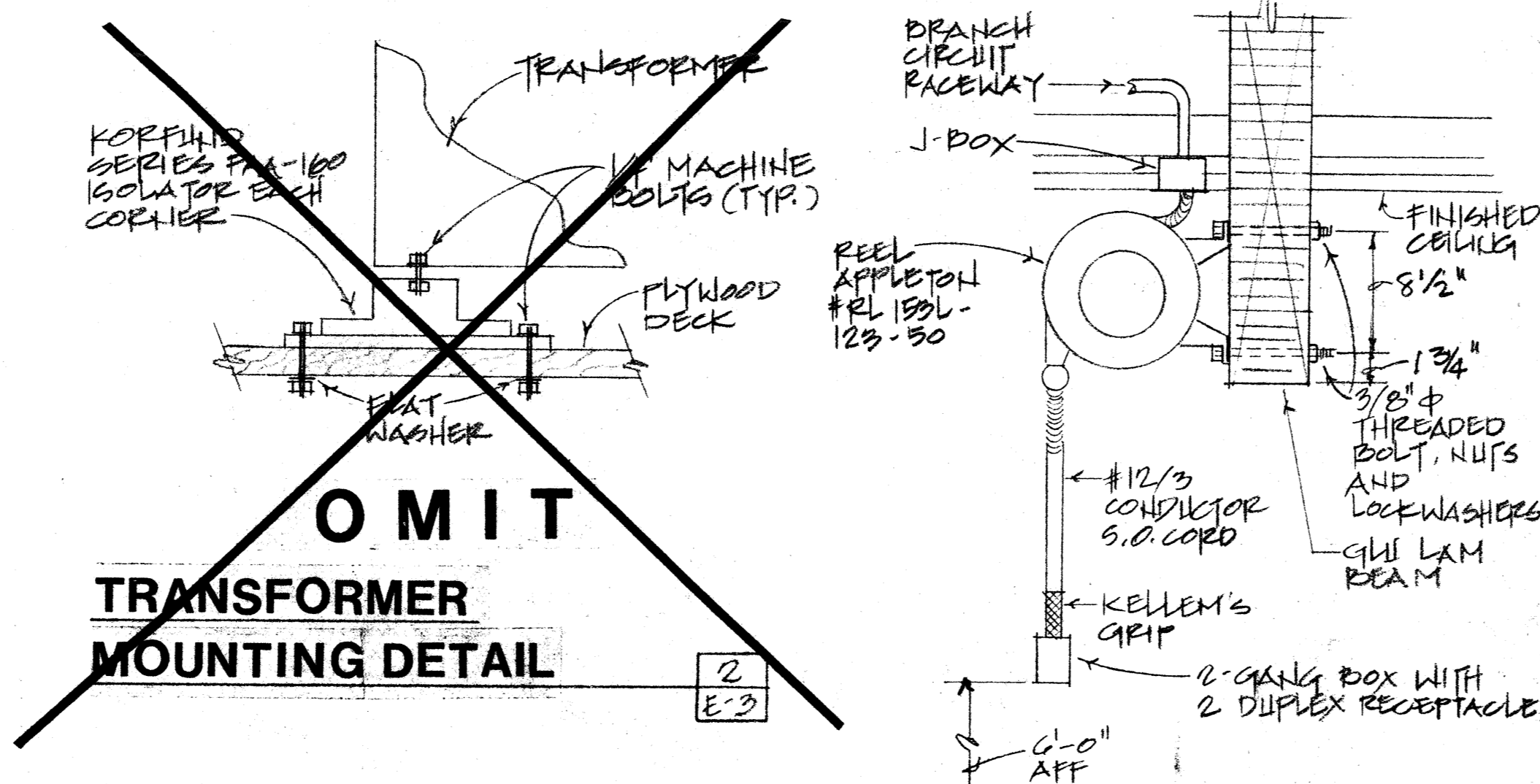


CEILING MOUNTED CORD REEL DETAIL
NOT TO SCALE



GLU LAM BEAM MOUNTED CORD REEL DETAIL
NOT TO SCALE

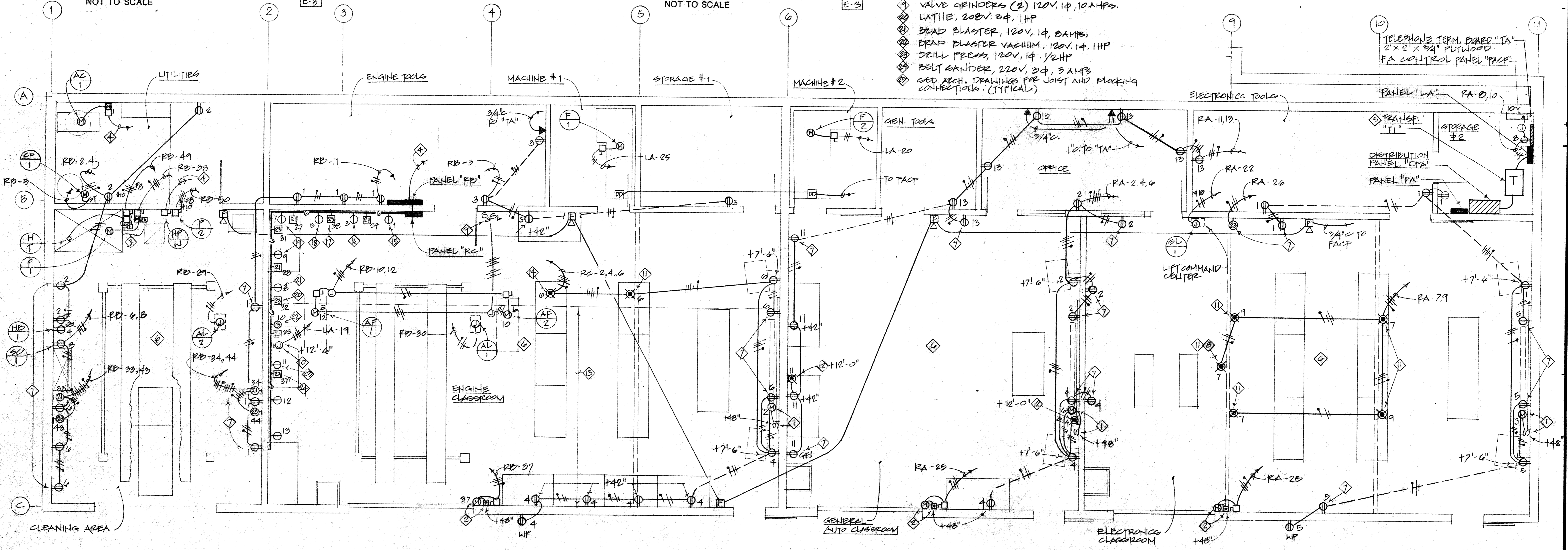
OMIT
TRANSFORMER MOUNTING DETAIL

GENERAL NOTE #1
PROVIDE SEPARATE SHOP DRAWINGS FOR FIRE ALARM SYSTEM TO STATE FIRE MARSHAL AT OSA. FOR REVIEW AND APPROVAL PRIOR TO INSTALLATION. PROVIDE STATE FIRE MARSHAL LIST NUMBER FOR ALL COMPONENTS.

| | | |
|---|----------------------|---|
| OSA Structural Safety Sect. | State Fire Marshal | OSA Access Compliance Sect. |
| IDENTIFICATION STAMP Department of General Services Office of the State Architect SEP 14 1990 Structural Safety Section App. # 53721 Checked by [Signature] | [Signature] 12-14-90 | OFFICE OF THE STATE ARCHITECT ACCESS COMPLIANCE 53721 DEC 14 90 APPLICATION PER W. JUD. RULES NO. 3 |

SHEET NOTES

- ◇ FOR THIS REEL & CORD, IN LIEU OF DOUBLE DUPLEX RECEPTACLE INSTALL APPLETON #RE-HLGR (LAMP, W/ SWITCH & 3 PRONG GROUNDED RECEPTACLE).
- ◇ AIR FILTERS CONTROL SWITCHES FURNISHED WITH UNITS INSTALLED AND CONNECTED BY DIV. 16.
- ◇ CHAIN HOIST, 1HP, 460V, 3Φ POWER OUTLET. VERIFY EXACT LOCATION WITH CRANE SHOP DRAWINGS.
- ◇ SEE DETAIL [E-2] FOR MOUNTING
- ◇ MOUNTING SHALL BE SIMILAR TO [E-3] EXCEPT WALL MOUNTED
- ◇ CRANE RAILING ABOVE. SEE ARCHITECTURAL DRAWINGS.
- ◇ SEE DETAIL [E-3] FOR MOUNTING
- ◇ HEAD SURFACER, 120V, 1Φ, 3/4HP
- ◇ ROD HONE, 120V, 1Φ, 1/2HP
- ◇ HEAD MACHINE, 208V, 3Φ, 1HP
- ◇ ROD GRINDER 120V, 1Φ, 3/4HP
- ◇ VALVE GRINDERS (2) 120V, 1Φ, 10AMPS.
- ◇ LATHE, 208V, 3Φ, 1HP
- ◇ BRAD BLASTER, 120V, 1Φ, 8AMPS.
- ◇ BRAD PLASTER VACUUM, 120V, 1Φ, 1HP
- ◇ DRILL PRESS, 120V, 1Φ, 1/2HP
- ◇ BELT SANDER, 220V, 3Φ, 3 AMPS
- ◇ SEE ARCH. DRAWINGS FOR JOIST AND BRACKING CONNECTIONS. (TYPICAL)
- ◇ MOTORIZED SCREEN, 120V, 1Φ, SWITCH SUPPLIED WITH UNIT, INSTALLED AND CONNECTED BY DIV. 16.
- ◇ MOTORIZED ROLL-UP DOOR, 208V, 3Φ, PUSHBUTTON SUPPLIED WITH UNIT, INSTALLED AND CONNECTED BY DIV. 16.
- ◇ (E) DISCONNECT SWITCHES, STARTER, ON-OFF SWITCHES, CONTACTOR AND CONTROL TRANSFORMER RELOCATED
- ◇ 3-D DISTRIBUTION PANEL "DPA", SEE SINGLE LINE DIAGRAM.
- ◇ FLOOR MOUNTED TRANSFORMER, SEE [E-4].
- ◇ ALL WIRING FROM MAIN FLOOR TO A POINT +18" ABOVE FLOOR SHALL BE EXPLOSION PROOF AND WIRED IN ACCORDANCE WITH N.E.C. ARTICLE 500 FOR CLASS I, DIVISION 2 LOCATION.
- ◇ ALL OUTLETS SHALL BE MOUNTED +24" U.O.H.



FLOOR PLAN - POWER AND SIGNAL
SCALE: 1/4" = 1'-0"

KELLER AND DASEKING ARCHITECTS
 WALTER L. KELLER A.I.A.
 WILLIAM H. DASEKING A.I.A.
 825 OAK GROVE AVENUE
 MENLO PARK, CA 94025 415/322-5366
 C-1334

AUTOMOTIVE CLASSROOM BUILDING
 TOILET ROOM RENOVATIONS
SKYLINE COLLEGE
 SAN MATEO COUNTY COMMUNITY COLLEGE DISTRICT

8906
 3-12-90
E-3
 31841