

KRUGER BENSEN ZIEMER
ARCHITECTS, INC. AIA
30 W. ARRELLAGA SANTA BARBARA, CA.
805/963-1726 93101

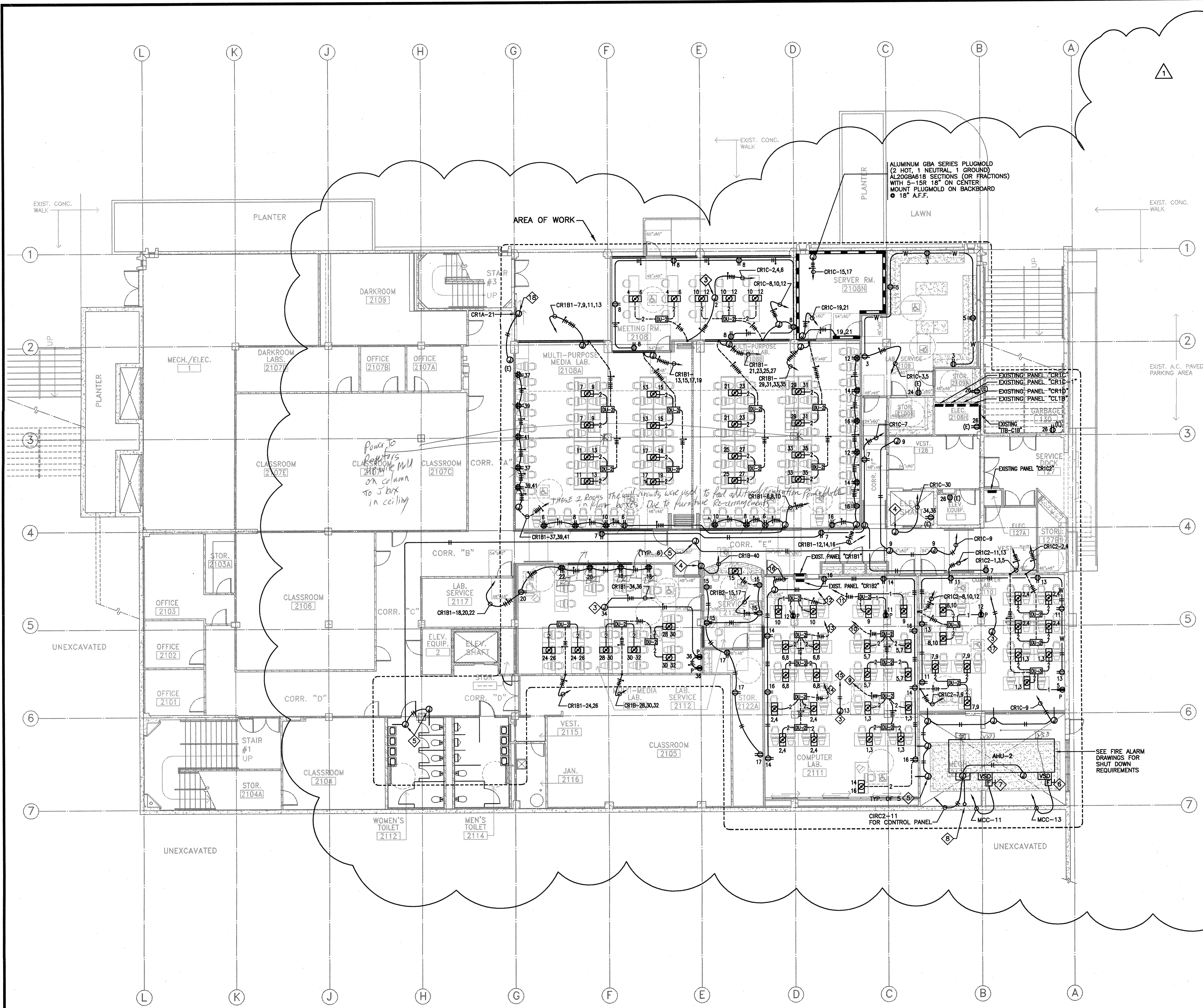
STEVE DOWDY, A.I.A.
PRINCIPAL IN CHARGE

GERALD SHUSTA
PROJECT ARCHITECT

All notes, specifications and other technical information on this drawing are subject to the provisions of the contract documents. It is the responsibility of the contractor to verify the accuracy of all information on this drawing. The contractor shall be responsible for any errors or omissions on this drawing. The contractor shall be responsible for any errors or omissions on this drawing. The contractor shall be responsible for any errors or omissions on this drawing.

DALAN ENGINEERING, INC.
ELECTRICAL ENGINEERS
DALAN JOB No AA181
8638 DARBY AVENUE (714) 771-4221
NORTHBRIDGE, CA. 91325 (805) 684-4944
(818) 772-2220 FAX (818) 772-2239

**CENTER FOR ADVANCED LEARNING TECHNOLOGY
SKYLINE COLLEGE**
 SAN MATEO COUNTY COMMUNITY COLLEGE DISTRICT
 SAN BRUNO, CALIFORNIA 94066
 3300 COLLEGE DRIVE

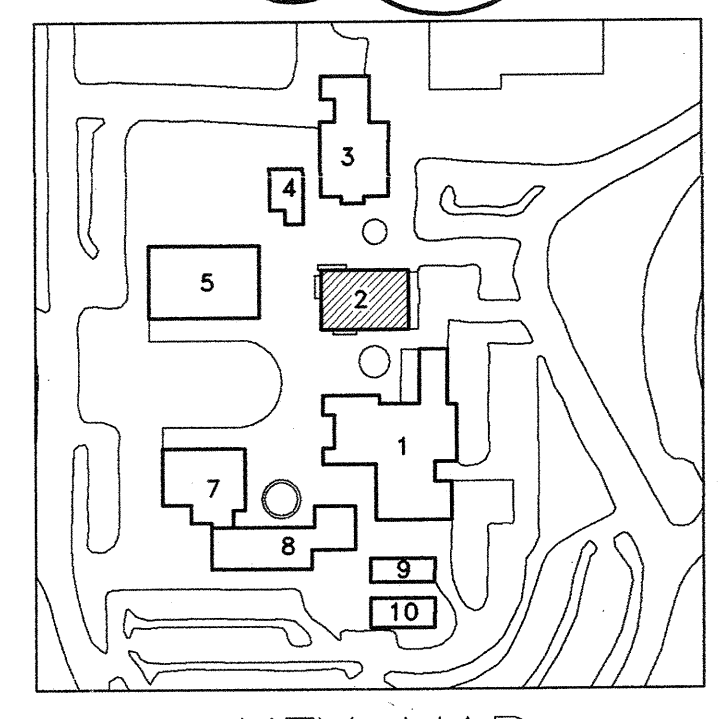


- PLAN NOTES:**
- ◇ NOT USED.
 - ◇ EACH HOME RUN SHALL CARRY A DEDICATED GROUND WIRE.
 - ◇ PROVIDE 120V POWER FOR CEILING PROJECTOR.
 - ◇ CONNECT NEW FIRE DOOR TO NEW BRANCH CIRCUIT.
 - ◇ J-BOX FOR CONNECTION OF SMOKE FIRE DAMPERS.
 - ◇ 15HP, 480V, 3Ø SUPPLY FAN WITH "VSD". PROVIDE 3ØAS, 3ØAF, 3Ø DISCONNECT. CONNECT TO EXISTING "MCC-13" FEEDER. PROVIDE ADDITIONAL 3/4" - 3/8" TO PATCH & EXTEND EXISTING FEEDERS TO NEW "VSD"
 - ◇ 5HP, 480V, 3Ø RETURN AIR FAN WITH "VSD". PROVIDE 3ØAS, 15AF, 3Ø DISCONNECT. CONNECT TO EXISTING "MCC-11" FEEDER. PROVIDE ADDITIONAL 3/4" - 3/8" TO PATCH AND EXTEND EXISTING FEEDERS TO NEW "VSD"
 - ◇ RUN 3/4" CONDUIT ONLY FROM CONTROL PANEL OF AHU-2 TO ROOF'S EXISTING CONTROL PANEL FOR AHU-1 & CH-1. MECHANICAL CONTRACTOR SHALL INSTALL COMMUNICATION BUS CABLE FROM NEW AHU-2 TO EXISTING E.M.S. SYSTEM (VERIFY EXACT POINT OF CONNECTION IN FIELD.)
 - ◇ RUN HOMERUN UNDER RAISED FLOOR TO CR182-1,3
 - ◇ RUN HOMERUN UNDER RAISED FLOOR TO CR182-5,7
 - ◇ RUN HOMERUN UNDER RAISED FLOOR TO CR182-9,11
 - ◇ RUN HOMERUN UNDER RAISED FLOOR TO CR182-10,12
 - ◇ RUN HOMERUN UNDER RAISED FLOOR TO CR182-6,8
 - ◇ RUN HOME RUN UNDER RAISED FLOOR TO CR182-2,4
 - ◇ RUN HOME RUN IN CEILING FOR CEILING PROJECTOR TO CR182-13 (ROOM 2111)
 - ◇ RUN HOME RUN UNDER RAISED FLOOR TO CR182-14,16
 - ◇ RUN HOME RUN IN CEILING FOR CEILING PROJECTOR TO CR182-6 (ROOM-2110)
 - ◇ CONNECT NEW AUTOMATIC SLIDING DOOR TO EXISTING CIRCUIT CR1A-21. VIA EXISTING J-BOX.

- PLAN LEGEND:**
- ⊕ AFM_6S COMBINATION POWER/DATA ACCESS FLOOR MODULE BY THOMAS & BETTS WITH (2) DUPLEX 5-20R RECEPTABLES IN OPPOSITE PANELS AFP-6SL & AFP-6SR AND (2) DATA T & B OMNI RJ 45 DEVICE PANELS, AFP-6SRJ. DUPLEX RECEPTABLES SHALL BE ON (2) SEPARATE CIRCUITS UNLESS OTHERWISE NOTED.
 - DU UNDER FLOOR WALKERFLEX AWS DISTRIBUTION UNIT, THE NUMBER NEXT TO UNIT DENOTES THE NUMBER OF HOT CONDUCTOR
 - DU-2 WALKERFLEX UNDER FLOOR DISTRIBUTION UNIT MODEL #DU211WC3 (2 HOTS, 1 NEUTRAL, 1 SYSTEM GROUND-3 PORTS) BY WIREMOLD
 - DU-3 WALKERFLEX UNDER FLOOR DISTRIBUTION UNIT MODEL #DU311WC4 (3HOTS, 1 NEUTRAL, 1 SYSTEM GROUND-4 PORTS) BY WIREMOLD.
 - 1 WALKERFLEX CABLE SET # CS111LXPO (VERIFY LENGTH) (1 HOTS, 1 NEUTRAL, 1 SYSTEM GROUND WITH 12", 5#12 THHN PIGTAIL) BY WIREMOLD.
 - 2 WALKERFLEX CABLE SET # CS211LXPO (VERIFY LENGTH) (2 HOTS, 1 NEUTRAL, 1 SYSTEM GROUND WITH 12", 4#12 THHN PIGTAIL) BY WIREMOLD.
 - 3 WALKERFLEX CABLE SET # CS311LXPO (VERIFY LENGTH) (3 HOTS, 1 NEUTRAL, 1 SYSTEM GROUND WITH 12", 5#12 THHN PIGTAIL) BY WIREMOLD.
 - W SURFACE METAL RACEWAY SERIES V-500 BY WIREMOLD.

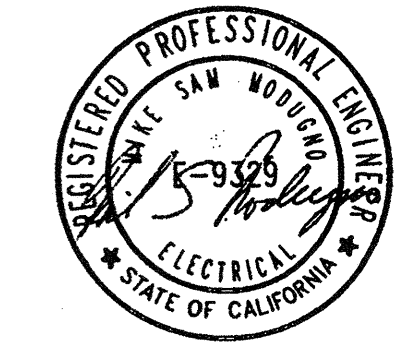
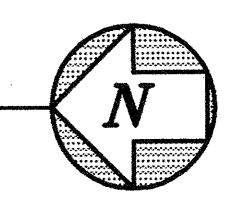
- "AHU-2" NOTES:**
1. ELECTRICAL CONTRACTOR TO REMOVE STARTERS FROM CIRCUIT #11 & #13 WITHIN EXISTING MOTOR CONTROL CENTER "MCC". THESE CIRCUITS SHALL REFEED NEW AHU-2.
 2. ELECTRICAL CONTRACTOR TO PROVIDE ADDITIONAL WIRING AND CONDUIT BETWEEN DISCONNECT SWITCH AND "VSD" AND FROM "VSD" TO FAN MOTOR.

- GENERAL NOTES:**
1. PREWIRED "MC" OR "AC" CABLES MAYBE USED FOR UNDER FLOOR POWER HOMERUNS AND INTERCONNECTIONS.



R E M O D E L

1st LEVEL FLOOR PLAN BUILDING # 2
SCALE: 1/8" = 1'-0"



IDENTIFICATION STAMP
DIV. OF THE STATE ARCHITECT
OFFICE OF REGULATION SERVICES
APPL 01-1/3 735
DATE

NO.	DESCRIPTION	DATE	BY
1	BID SET REVISIONS	10/25/01	
2	DSA SUBMITTAL	06/15/01	
REVISION			

DRAWN	LOG
CHECKED	DK
DATE	03/21/01
JOB NO.	98-03
SHEET TITLE	
1ST FLOOR PARTIAL POWER PLAN	
SHEET	
E-2.3	
OF	