

KRUGER BENSEN ZIEMER
ARCHITECTS, INC. AIA
30 W. ARRELLAGA SANTA BARBARA, CA.
805/963-1726 93101

STEVE DOWTY, A.I.A.
PRINCIPAL IN CHARGE

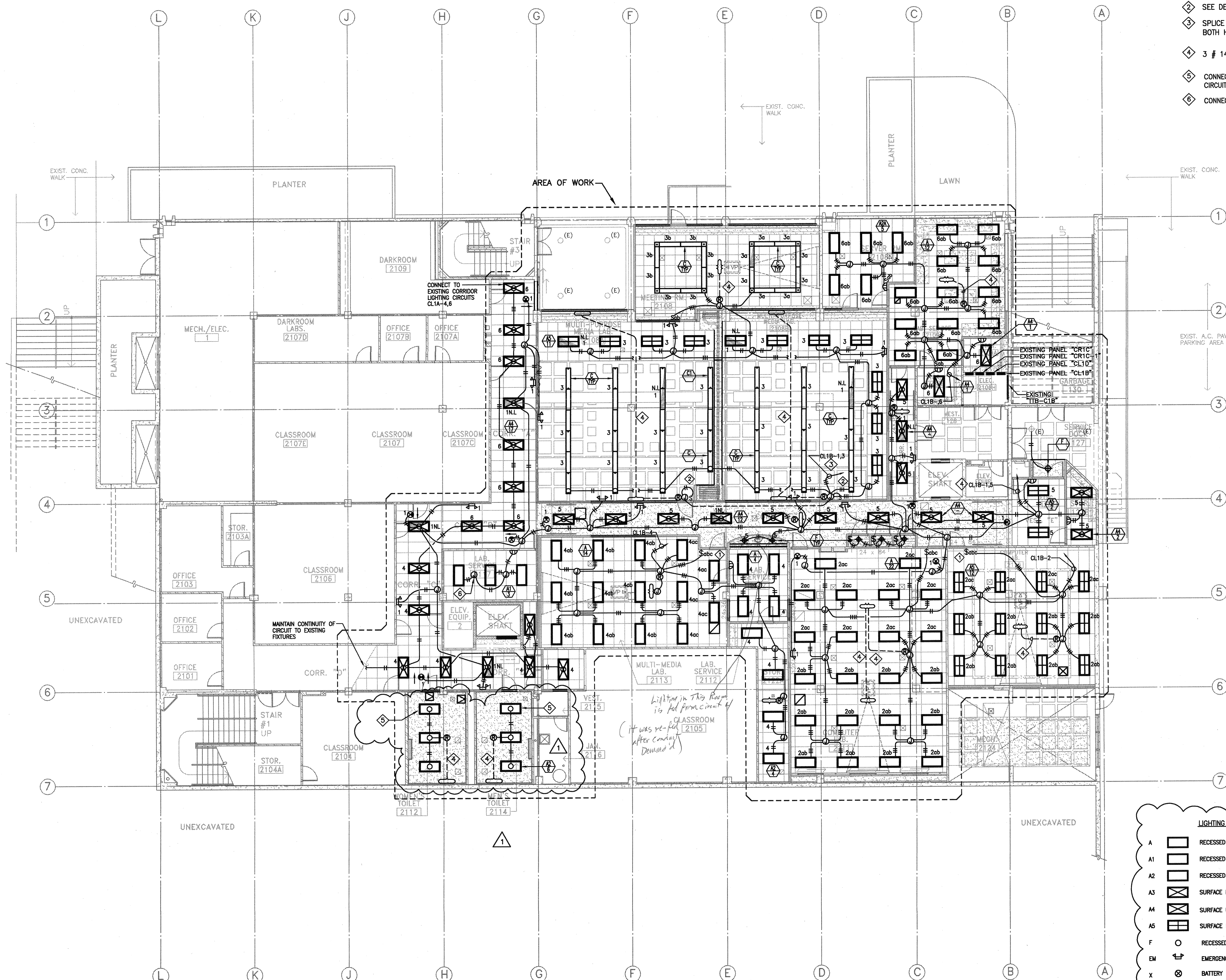
GERALD SHUSTA
PROJECT ARCHITECT

All items, single or multiple, are shown in this schedule or schedule of materials by the contractor and shall be the responsibility of the contractor. The contractor shall be responsible for the selection of the manufacturer, model, color and finish for the items and shall be responsible for the coordination of the items with the existing conditions. The contractor shall be responsible for the coordination of the items with the existing conditions. The contractor shall be responsible for the coordination of the items with the existing conditions.

DALAN ENGINEERING, INC.
ELECTRICAL ENGINEERS
DALAN JOB No AA181
8638 DARBY AVENUE (714) 771-4221
NORTHIDGE, CA. 91325 (805) 684-4944
(818) 772-2220 FAX (818) 772-2239

NOTES:

- 1 SEE DETAIL — (A-E)10
- 2 SEE DETAIL — (B-E)10
- 3 SPLICE CIRCUIT #1 IN PANEL "CL1B" SO THAT IT CAN BE CARRIED IN BOTH HOMERUNS "CL1B-1,3" AND "CL1B-1,5"
- 4 3 # 14 LOW VOLTAGE WIRE IN 1/2" CONDUIT.
- 5 CONNECT NEW LIGHTS TO EXISTING BATHROOM LIGHTING CIRCUIT CL1A-9
- 6 CONNECT NEW LIGHTS TO EXISTING LIGHTING CIRCUIT CL1A-9



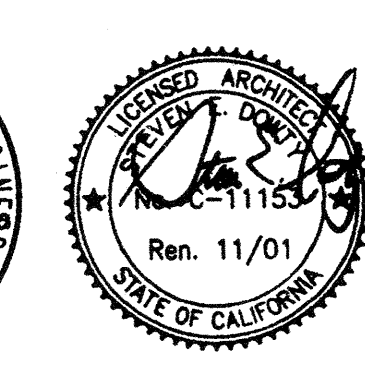
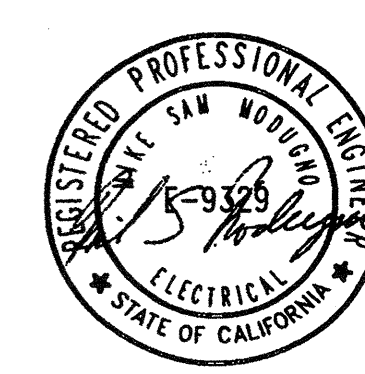
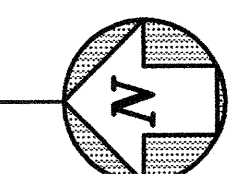
LIGHTING FIXTURE LEGEND:

- A RECESSED MOUNTED PARABOLIC 3 LAMP FLUORESCENT FIXTURE
- A1 RECESSED MOUNTED PARABOLIC 2 LAMP FLUORESCENT FIXTURE
- A2 RECESSED MOUNTED PRISMATIC 2 LAMP FLUORESCENT FIXTURE
- A3 SURFACE MOUNTED PRISMATIC 3 LAMP FLUORESCENT FIXTURE
- A4 SURFACE MOUNTED PRISMATIC 2 LAMP FLUORESCENT FIXTURE
- A5 SURFACE MOUNTED PARABOLIC 3 LAMP FLUORESCENT FIXTURE
- F RECESSED COMPACT FLUORESCENT DOWNLIGHT.
- EM EMERGENCY BATTERY BACK FIXTURE.
- X BATTERY BACKED LED EXIT SIGN.

R E M O D E L

1st LEVEL FLOOR PLAN BUILDING # 2

SCALE: 1/8" = 1'-0"



IDENTIFICATION STAMP
DIV. OF THE STATE ARCHITECT
OFFICE OF REGULATION SERVICES
APPL. 01-103 735
DATE: 03/21/01

△	BID SET REVISIONS	10/25/01
□	DSA SUBMITTAL	06/15/01
NO.	DESCRIPTION	DATE BY
REVISION		

DRAWN	LOG
CHECKED	DK
DATE	03/21/01
JOB NO.	98-03
SHEET TITLE	
1ST FLOOR PARTIAL LIGHTING FLOOR PLAN	
SHEET	
E 2.2	
OF	

CENTER FOR ADVANCED LEARNING TECHNOLOGY
SKYLINE COLLEGE
 SAN MATEO COUNTY COMMUNITY COLLEGE DISTRICT
 3300 COLLEGE DRIVE
 SAN BRUNO, CALIFORNIA 94066