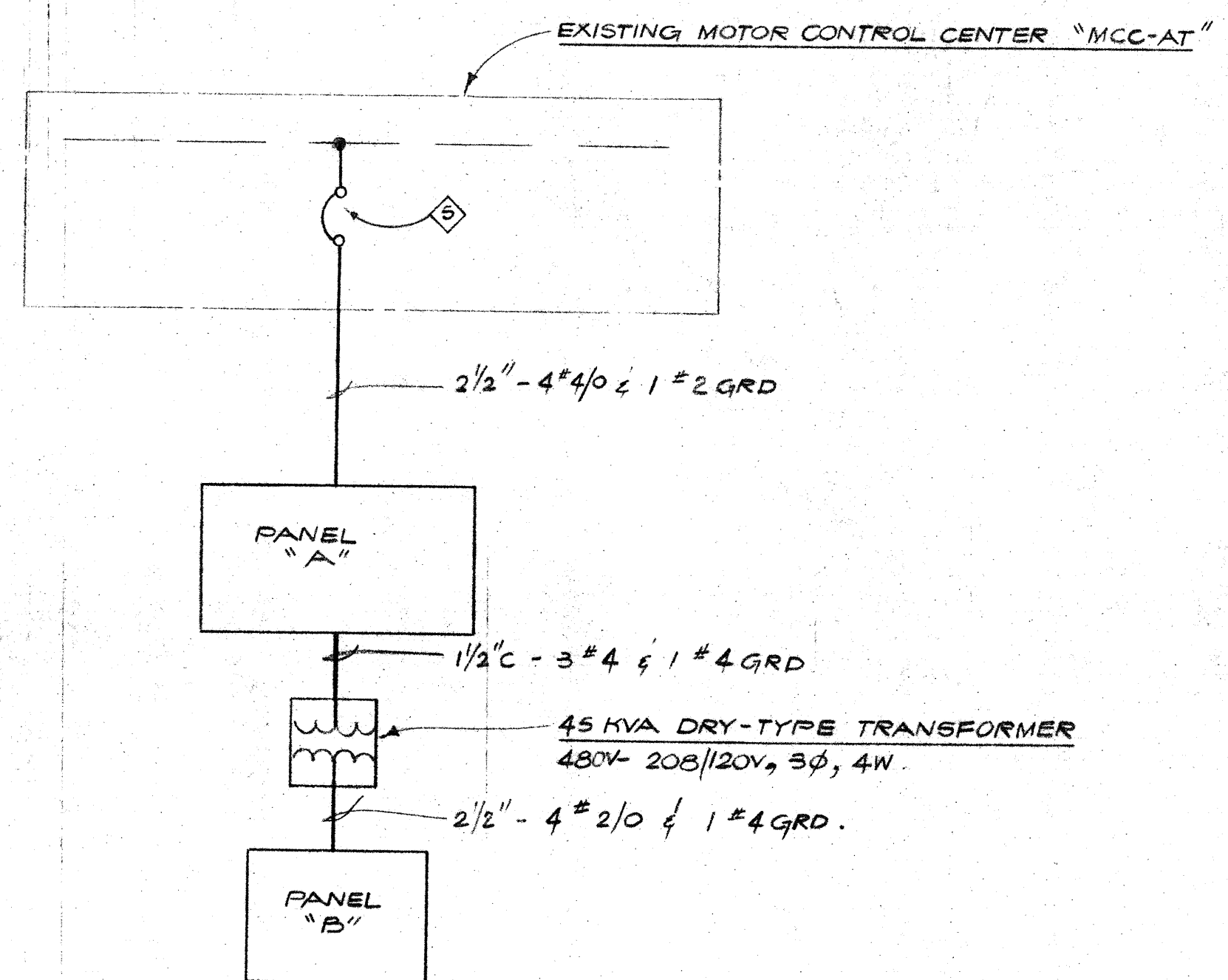


FIXTURE SCHEDULE				
TAG	MANUFACTURER'S CAT. NO.	LAMPS	VOLTAGE	MOUNTING
A	DAY-BRITE #R-81252-B	2-F96T12/CM/HA	277V	SURFACE SEE E-1
B	ETONCO #523-100MM	H38JA-100/DX	277V	WALL SURFACE

PANELBOARD SCHEDULE					
PANEL	CIRCUIT DATA	BREAKER	MOUNT	TYPE	VOLT.
A	MAIN	225A/3P	SURFACE	NHB	480/227V, 3Ø, 4W, 225A BUS
	1-6	20A/1P			
	7, 13	30A/3P			
	8 (PANEL "B")	70A/3P			
	14	20A/3P			
	19-36 (SPACE)	/1P			
B	MAIN	175A/3P	SURFACE	NLAB	208/120V, 3Ø, 4W, 225A BUS
	1-22	20A/1P			
	23, 24, 27, 28, 31, 32, 35, 36, 39	30A/2P			
	40, 43, 44, 47	30A/2P			
	48, 51, 57, 60	20A/3P			
	54	60A/3P			
	63, 65-84 (SPACE)	/1P			

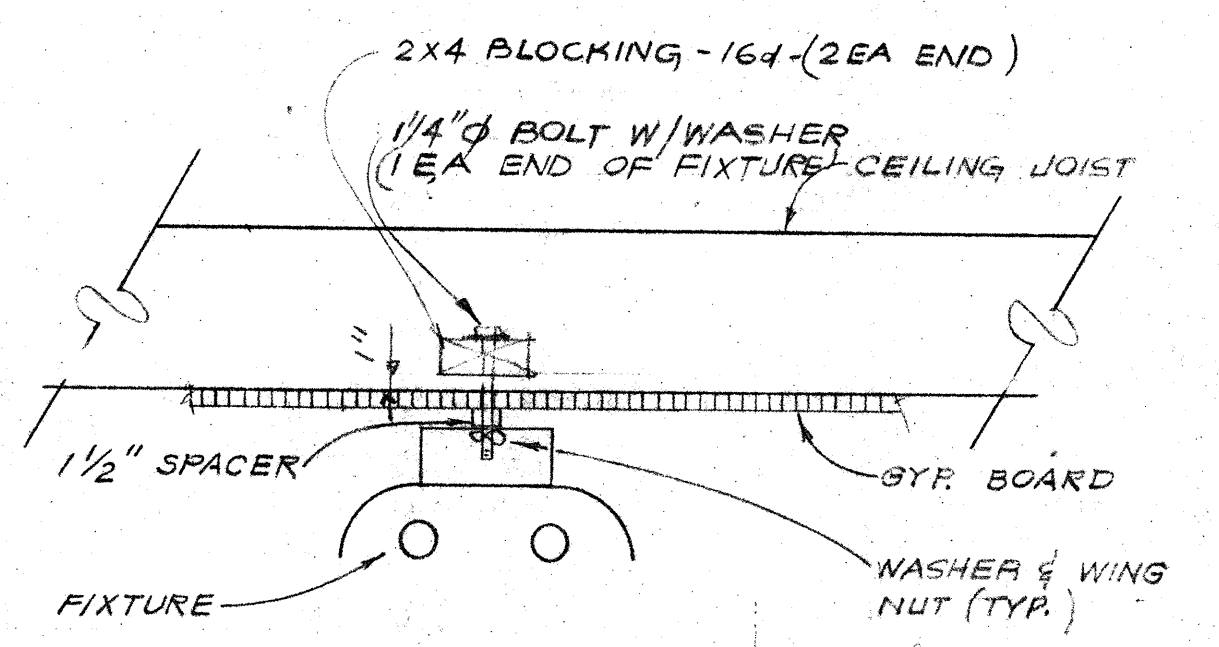


SINGLE LINE DIAGRAM 1
E-1

MECHANICAL EQUIPMENT SCHEDULE						
TAG	DESCRIPTION	HP/KW	VOLT. PHASE & NO.	CIRCUIT DATA WIRE CONDUIT	STARTER DATA	CONTROL DISCONNECT
UH 1	UNIT HEATER #1	1/8HP	120V/1Ø		MANUAL	BY TEMP. CONTROL MFG.
UH 2	#2	1/8HP	120V/1Ø		MANUAL	
UH 3	#3					
UH 4	#4					
AC	AIR COMPRESSOR	7 1/2HP	480V/3Ø	3/4" C		30A/3P
P 1	PUMP #1	1HP	208V/3Ø	3/4" C	MAGNETIC NEMA SIZE 1	SEE E-2 30A/3P
P 2	#2	3/4HP	480V/3Ø	1/2" C		SEE E-2 30A/3P
EF 1	EXHAUST FAN #1	1HP	208V/3Ø	3/4" C		30A/3P
EF 2	#2		208V/3Ø			30A/3P
HT	HOT TANK	3KW	480V/3Ø	3/4" C	PACKAGE UNIT	30A/3P

- LEGEND**
- MERCURY VAPOR LIGHTING FIXTURE & OUTLET - WALL MOUNTED.
 - ◻ FLUORESCENT FIXTURE AND OUTLET - SURFACE.
 - LIGHTING FIXTURE IDENTIFICATION TAG.
 - ⊙ SINGLE POLE WALL SWITCH + 5" U.O.N.
 - ⊕ RECEPTACLE, DUPLEX 15A, 3PG, 120V + 12" U.O.N.
 - ⊕ RECEPTACLE, SINGLE 30A, 3PG, 208V/1Ø-TWISTLOCK + 12"
 - ⊕ JUNCTION BOX, MOUNT IN CEILING SPACE FOR FUTURE REELITE.
 - ⊕ FIRE ALARM BREAK GLASS STATION + 5'-0"
 - ⊕ FIRE ALARM BELL + 7'-0"
 - ⊕ JUNCTION BOX.
 - ⊕ MOTOR OUTLET AND CONNECTION.
 - ⊕ MAGNETIC MOTOR STARTER.
 - ⊕ MANUAL MOTOR STARTER.
 - ⊕ DISCONNECT SWITCH.
 - ▬ PANELBOARD.
 - CONDUIT RUN CONCEALED IN CEILING OR WALLS.
 - - - CONDUIT RUN CONCEALED IN OR BELOW FLOOR OR GRADE.
 - ⤵ INDICATES EQUIPMENT CONNECTION.
 - ◇ SHEET NOTE IDENTIFICATION TAG.
 - ◻ SECTION OR DETAIL IDENTIFICATION TAG.
 - MECHANICAL EQUIPMENT IDENTIFICATION TAG.
 - U.O.N. UNLESS OTHERWISE NOTED.
 - WP WEATHERPROOF.
 - ⊕ TRANSFORMER.
 - ⊕ CONDUIT SEAL - GROUSE-HINDS TYPE "EYS".
 - ⊕ LOCK-OUT-STOP PUSHBUTTON.
 - ⊕ "STOP" "START" PUSHBUTTON WITH PILOT LIGHT.
 - ⊕ PILOT LIGHT.

- SHEET NOTES**
- ◇ REMOVE EXISTING POLE, FIXTURE & CABLES AND RETURN TO OWNER.
 - ◇ CORE THRU WALL. RESEAL AND MAKE WEATHERPROOF.
 - ◇ EXTEND EXISTING 1" C TO FIRE ALARM BELL AS SHOWN.
 - ◇ FOR EXACT LOCATION, SEE FLOOR PLAN.
 - ◇ PROVIDE 225A/3P BREAKER IN EXISTING SPACE.
 - ◇ 6" x 6" x 24" LONG FULL BOX. MOUNT AS LOW AS POSSIBLE.
 - ◇ SEE CLAYTON MFG. CO. DRAWING #R-5491, SHEET #2.
 - ◇ EXISTING POLE TO REMAIN.



DETAIL 2
E-1

SITE PLAN
SCALE: 1" = 30'-0"



APPROVED
JUL 7 1977

APPROVED
JUL 7 1977
OFFICE OF THE STATE ARCHITECT
ARCHITECTURAL BOARD
40530
APPROVED
JUL 7 77
No. A. Anderson
OFFICIAL ARCHITECT

KELLER AND DASEKING - ARCHITECTS
WALTER L. KELLER A.I.A.
WILLIAM H. DASEKING A.I.A.
825 OAK GROVE AVENUE
MENLO PARK, CALIFORNIA

**AUTOMOTIVE SHOP
SKYLINE COLLEGE**
SITE PLAN, SCHEDULES,
LEGEND, DETAILS & SINGLE LINE DIAG.

7705

6-6-77

E-1

11 OF 12