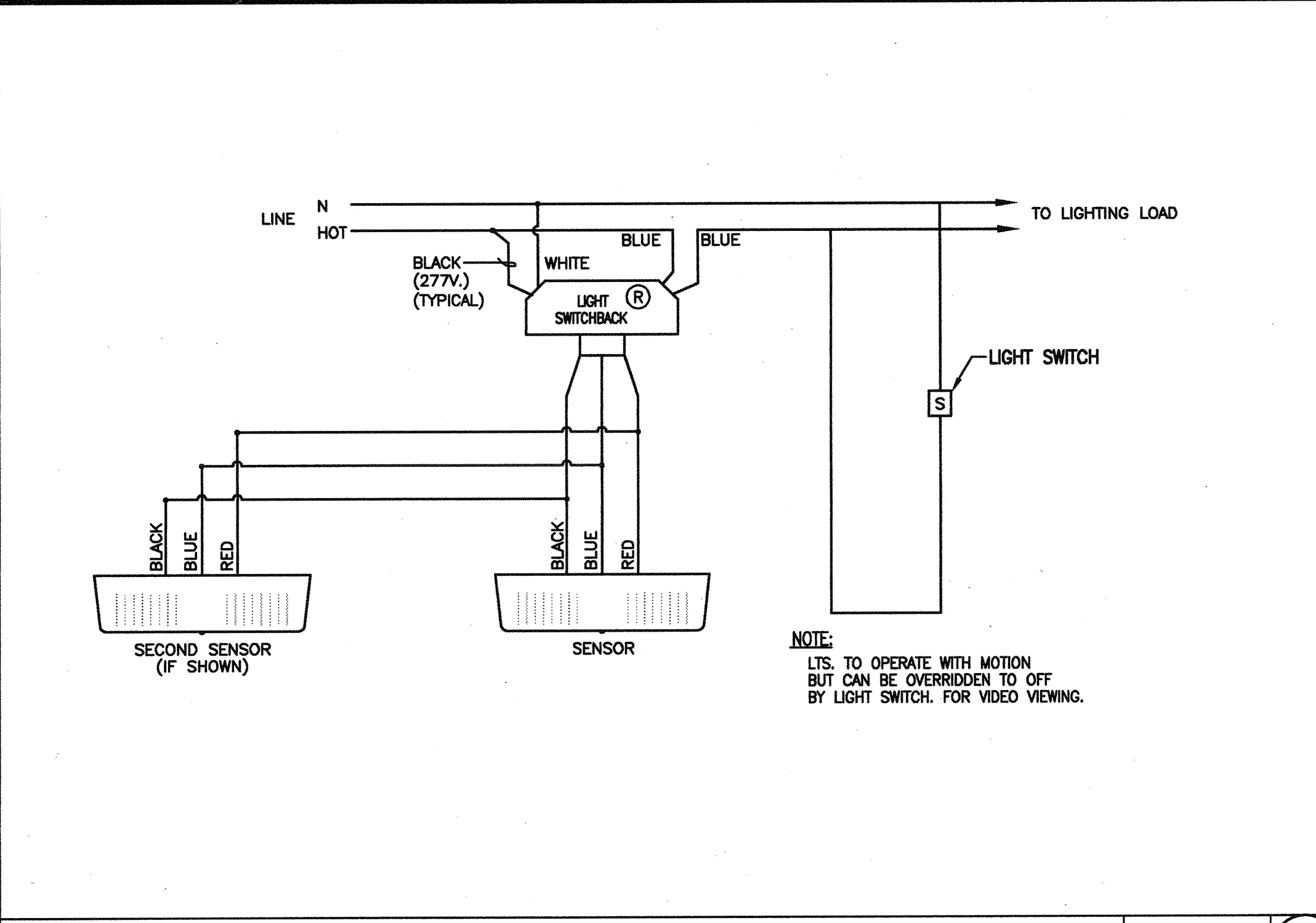


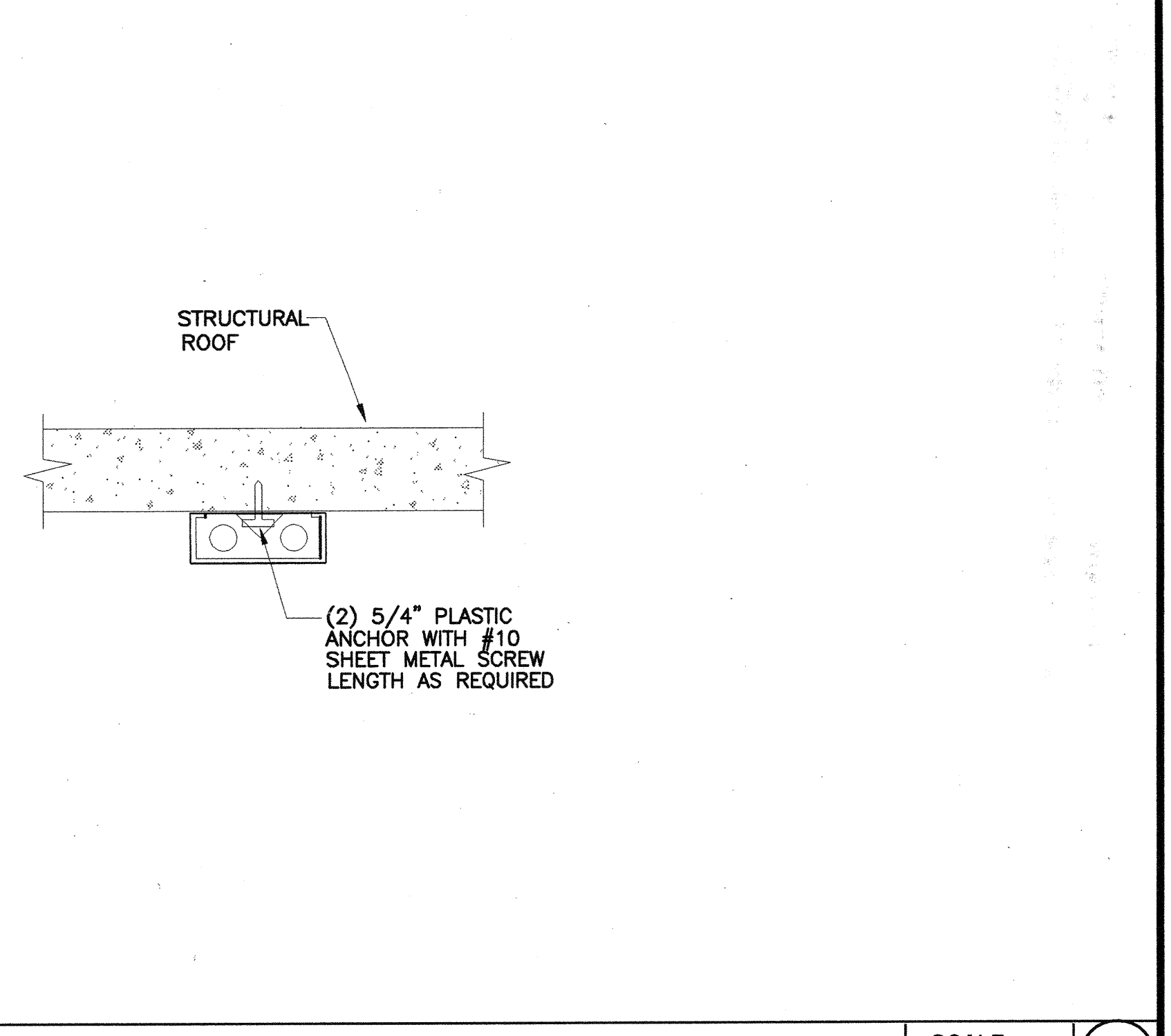
1 CIRCUIT MOTION SENSOR LIGHTING CONTROL

SCALE NONE A



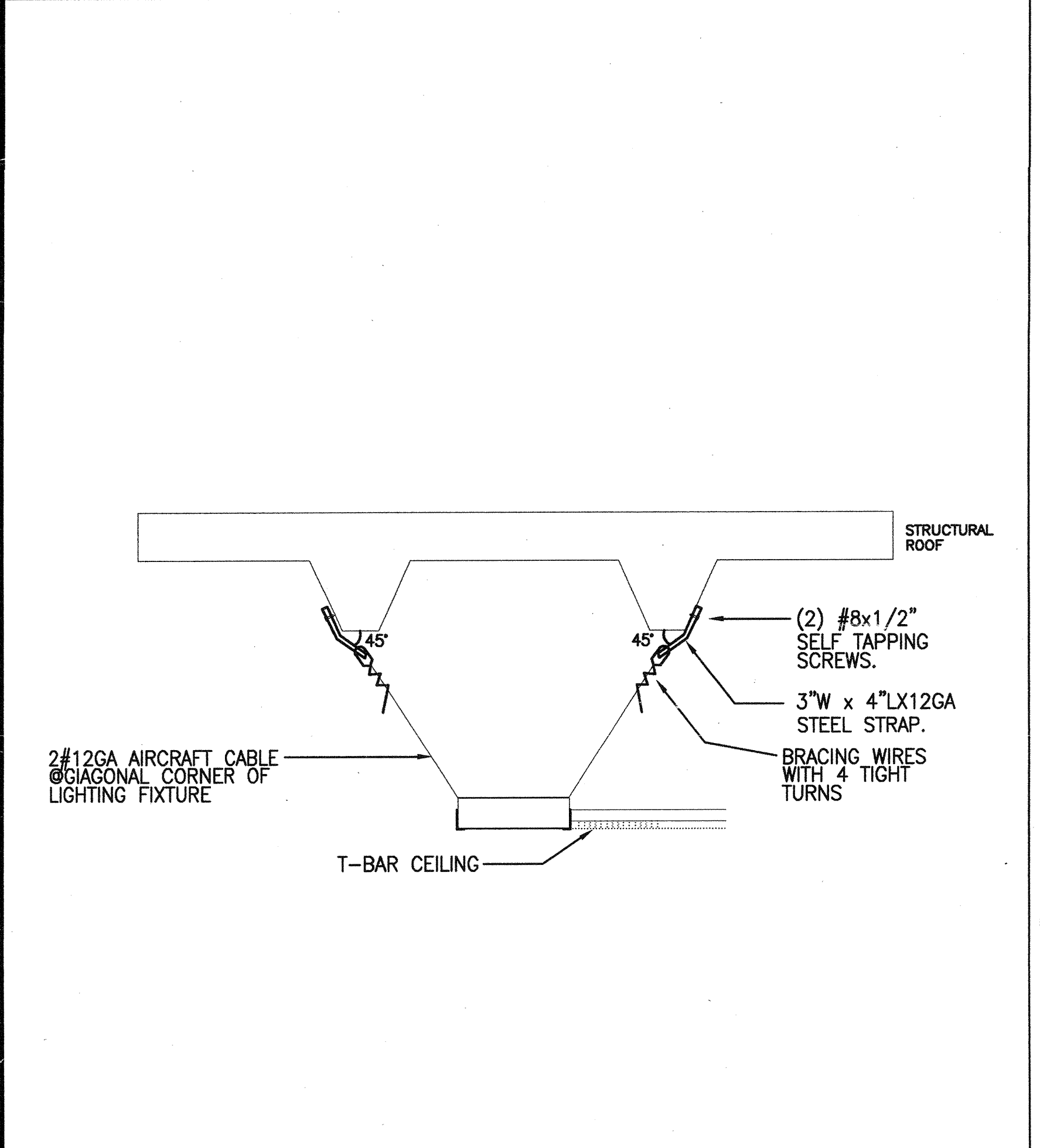
MOTION LIGHTING CONTROL WIRING DIAGRAM

SCALE NONE B



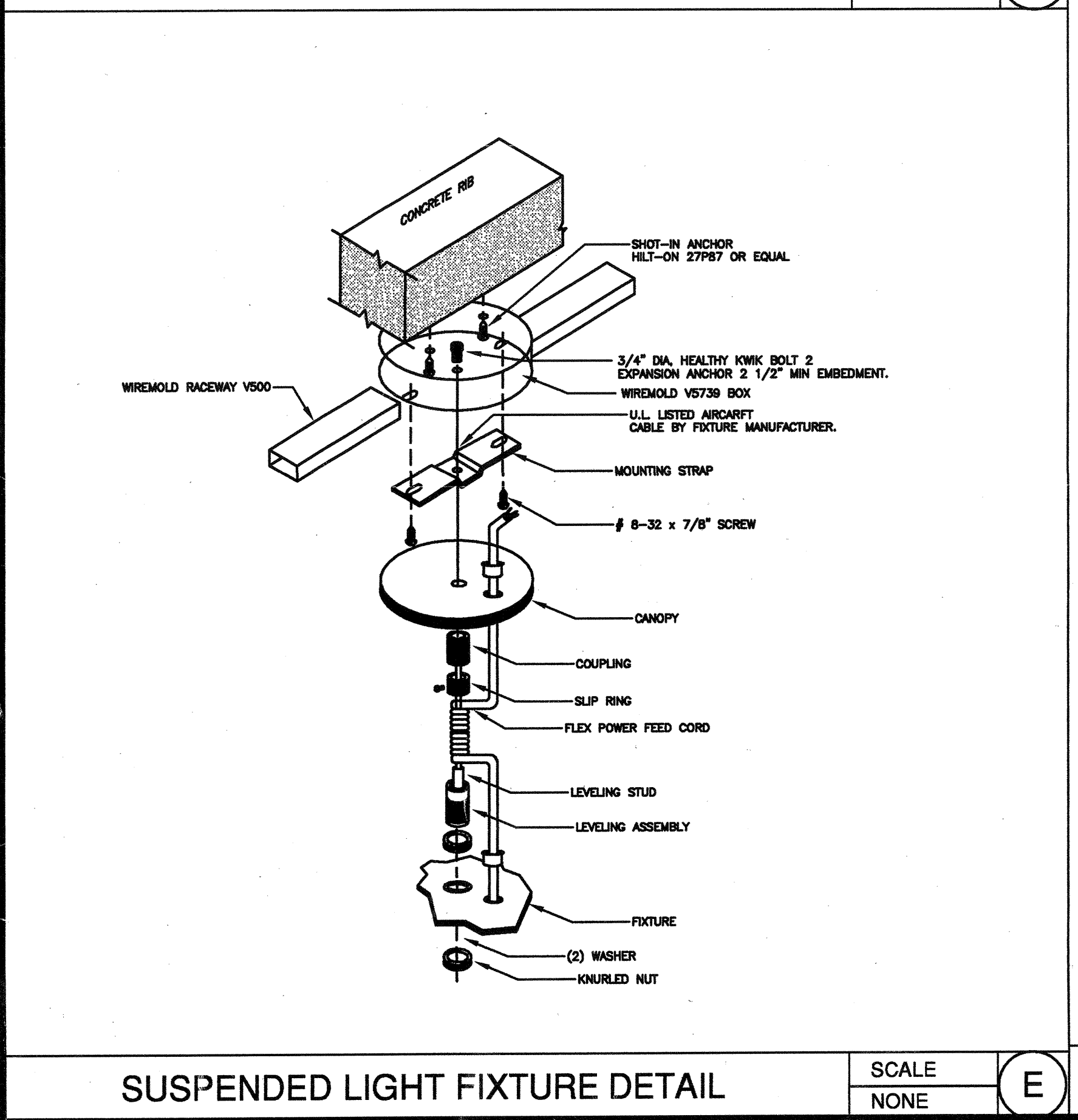
SURFACE MOUNTED LIGHT FIXTURE

SCALE NONE C



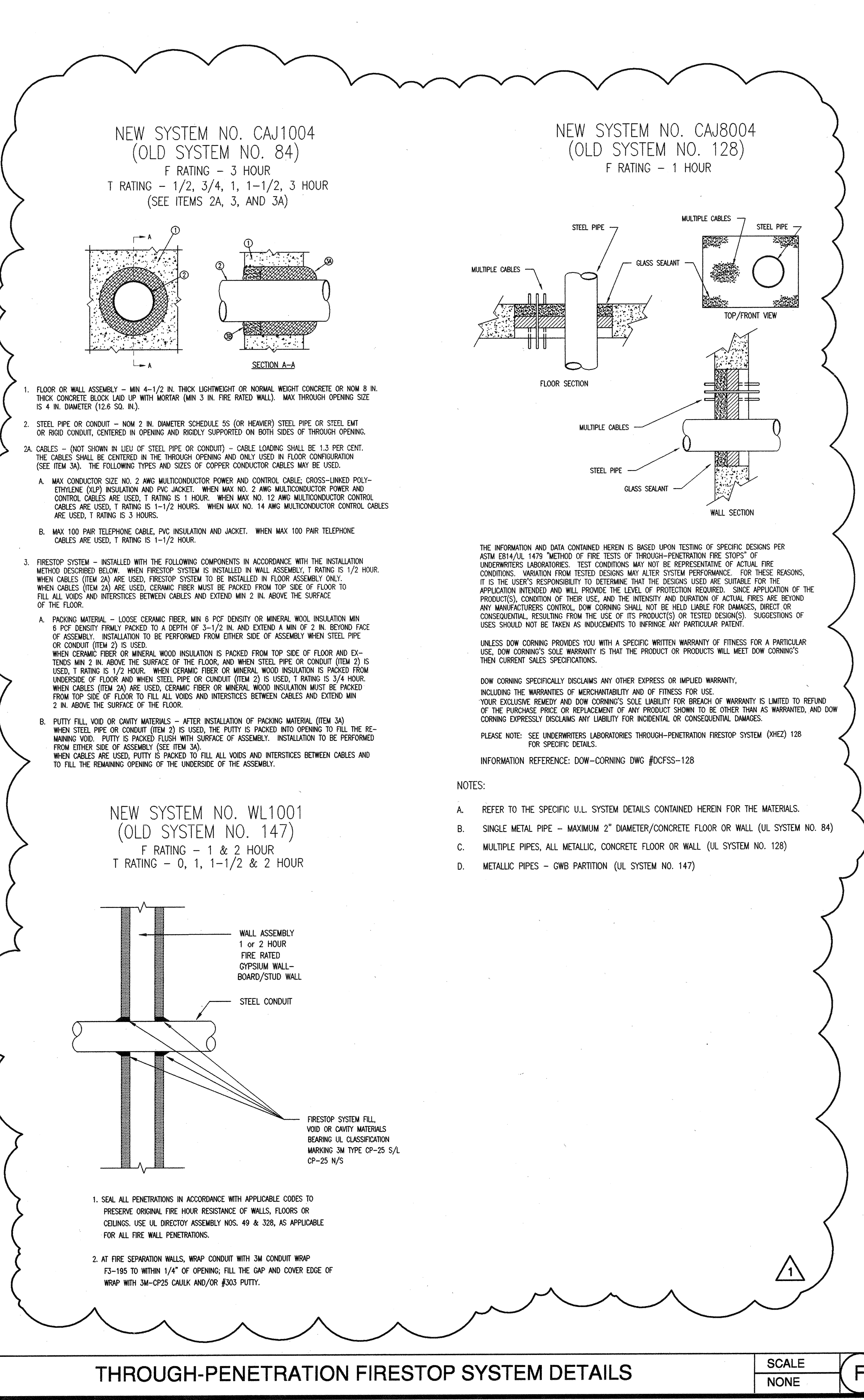
T-BAR TROOFFER MOUNTED DETAIL

SCALE NONE D



SUSPENDED LIGHT FIXTURE DETAIL

SCALE NONE E



THROUGH-PENETRATION FIRESTOP SYSTEM DETAILS

SCALE NONE F

ELECTRICAL SYMBOL LIST

- OUTLET & LIGHT FIXTURE, CEILING OR PENDANT MTD.
 - ◻ OUTLET & LIGHT FIXTURE, WALL MTD.
 - ◻ RECESSED LIGHT FIXTURE WITH J-BOX
 - ◻ OUTLET OR J-BOX & FLUOR. LIGHT FIXTURE
 - ◻ FLOODLIGHTS WITH W.P. J-BOX AT +6" UNLESS NOTED
 - ◻ EXIT LIGHT
 - ◻ PHOTO ELECTRIC CELL, WEATHERPROOF
 - ◻ TELEPHONE OUTLET, +18" OR AS NOTED. 3/4" C WITH PULLCORD TO 6" ABOVE CEILING
 - ◻ FLOOR OUTLET WITH TELEPHONE SERVICE FITTING
 - ◻ DATA OUTLET, +18" OR AS NOTED. 3/4" C WITH PULLCORD TO 6" ABOVE CEILING
 - ◻ DUPLEX RECEPTACLE WITH GROUND FAULT INTERRUPTER.
 - ◻ DUPLEX CONV. OUTLET, GROUNDING TYPE +18" OR AS NOTED
 - ◻ DOUBLE DUPLEX CONVENIENCE OUTLET, GROUNDING TYPE +18" UNLESS OTHERWISE NOTED.
 - ◻ HOSPITAL GRADE DUPLEX RECEPTACLE ±18" OR AS NOTED.
 - ◻ SINGLE POLE SWITCH, 4"-0" OR OTHERWISE NOTED.
 - ◻ TWO POLE SWITCH
 - ◻ THREE WAY SWITCH
 - ◻ SWITCH & PILOT LIGHT
 - ◻ SUBSCRIPT LETTER INDICATES LIGHTS CONTROLLED
 - ◻ MOTOR SWITCH WITH O.L. PROTECTION
 - ◻ DISCONNECT SWITCH. "F" INDICATES FUSED.
 - ◻ MAGNETIC MOTOR STARTER
 - ◻ COMBINATION MOTOR STARTER. "F" INDICATES FUSED.
 - ◻ THERMOSTAT OUTLET
 - ◻ PUSH BUTTON
 - ◻ BELL
 - ◻ BUZZER
 - ◻ PANEL BOARD
 - ◻ TRANSFORMER
 - ◻ MOTOR
 - ◻ EXHAUST FAN
 - ◻ SWITCH BOX. CONNECT TO EQUIPMENT NOTED ON PLAN
 - ◻ RECEPTACLE FOR PRINTER, ENGRAVE "PRINTER" ON COVER PLATE.
- THIN OR THWN COPPER
- 1/2" C - 2#12 CONCEALED IN CEILING OR WALL
- 1/2" C - 3#12 -HHH- 3/4" C - 6#12
- 1/2" C - 4#12 -HHH- 3/4" C - 7#12
- 3/4" C - 5#12 -HHH- 3/4" C - 8#12
- CONDUIT IN OR UNDER FLOOR OR UNDERGROUND
- TELEPHONE CONDUIT WITH PULL WIRE, 3/4" MIN. SIZE
- PROVIDE ISOLATED GROUND WIRE.
- PROVIDE #10 WIRES.
- CONTRACTOR PROVIDE ARMORED CABLE RUN IN LOW WALL FURNITURE.
- TWO WAY CORRIDOR MOTION SENSOR, NOVITAS #01-092
- TWO WAY ROOM MOTION SENSOR, NOVITAS #01-087
- MOTION SENSOR/WALL SWITCH, NOVITAS #01-290
- RELAY/SWITCHPACK, NOVITAS #13-031

SHEET INDEX

E-1.0	LEGEND, SYMBOLS, DETAILS & DIAGRAMS
E-1.2	1st FLOOR EXISTING CONDITIONS & DEMOLITION PLAN
E-2.2	1st FLOOR PARTIAL LIGHTING FLOOR PLAN
E-2.3	1st FLOOR PARTIAL POWER FLOOR PLAN
E-2.3A	1st FLOOR PARTIAL VAV BOXPOWER PLAN
E-2.4	1st FLOOR PARTIAL COMMUNICATION PLAN
E-2.5	ROOF POWER PLAN
E-5.1	PANEL SCHEDULES
E-5.2	SINGLE LINE DIAGRAM & FIXTURE SCHEDULE
EF-1.0	FIRE ALARM EQUIPMENT LIST & DETAILS
EF-1.1	BATTERY CALCULATIONS
EF-2.0	FIRE ALARM PLAN

- CODES:
- STATE OF CALIFORNIA TITLE 24 (1988 EDITION) PART 1 BUILDING STANDARDS ADMINISTRATIVE CODE.
 - STATE OF CALIFORNIA TITLE 24 (1988 EDITION) PART 2/ VOLUME 1 CALIFORNIA BUILDING CODE/AMENDMENT WITH 1997 UBC, VOLUME 1
 - STATE OF CALIFORNIA TITLE 24 (1988 EDITION) PART 2/ VOLUME 2 CALIFORNIA BUILDING CODE/AMENDMENT WITH 1997 UBC, VOLUME 2.
 - 1997 UNIFORM BUILDING CODE VOLUME 3
 - STATE OF CALIFORNIA TITLE 24 (1988 EDITION) PART 3 CALIFORNIA ELECTRICAL CODE AMENDMENTS WITH A 1996 NEC.
 - STATE OF CALIFORNIA TITLE 24 (1988 EDITION)-PART 6 CALIFORNIA ENERGY CODE/ AMENDMENT WITH A 1997 UFC.
 - STATE OF CALIFORNIA TITLE 24 (1988 EDITION)-PART 9 CALIFORNIA FIRE CODE/ AMENDMENT WITH A 1997 UFC.
 - STATE OF CALIFORNIA TITLE 24 (1988 EDITION)-PART 12 CALIFORNIA REFERENCE STANDARD CODE.
 - TITLE 19, CCR, PUBLIC SAFETY STATE FIRE MARSHALL REGULATIONS.

STANDARD & GUIDES:

- NFPA 72 NATIONAL FIRE ALARM CODE.

ABBREVIATIONS

- U.G. UNDERGROUND
- C.O. CONDUIT ONLY WITH PULL WIRE
- W.P. WEATHER PROOF
- +45" HEIGHT FROM FINISH FLOOR TO CENTERLINE OF OUTLET
- V.L. VERIFY EXACT LOCATION
- N.I.C. NOT IN CONTRACT
- U.O.N. UNLESS OTHER NOTICE

ALL ELECTRICAL EQUIPMENT SHALL BE BRACED OR ANCHORED TO RESIST A HORIZONTAL FORCE ACTING IN ANY DIRECTION USING THE FOLLOWING CRITERIA:

EQUIPMENT ON GRADE	20% OF OPERATING WEIGHT
EQUIPMENT ON STRUCTURE	30% OF OPERATING WEIGHT

FOR FLEXIBLY MOUNTED EQUIPMENT USE 4 x THE ABOVE VALUES, AND FOR SIMULTANEOUS VERTICAL FORCE USE 1/3 x THE HORIZONTAL FORCE.

THE ABOVE VALUES ARE FOR AN IMPORTANCE FACTOR, I=1.0 AND SEISMIC ZONE, Z=0.4

WHERE ANCHORAGE DETAILS ARE NOT SHOWN THE DRAWINGS THE FIELD INSTALLATION SHALL BE SUBJECT TO THE APPROVAL OF THE ELECTRICAL ENGINEER AND THE FILED ENGINEER OF THE OFFICE OF THE STATE ARCHITECT.

PROFESSIONAL ENGINEER

STATE OF CALIFORNIA

IDENTIFICATION STAMP

DIV. OF THE STATE ARCHITECT

OFFICE OF REGULATION SERVICES

APPL 01-13 735

Ren. 11/01

AC DATE

KRUGER BENSEN ZIEMER ARCHITECTS, INC. AIA

30 W. ARRELLAGA SANTA BARBARA, CA 93101

STEVE DOWDY, A.I.A. PRINCIPAL IN CHARGE

GERALD SHUSTA PROJECT ARCHITECT

DALAN ENGINEERING, INC. ELECTRICAL ENGINEERS DALAN JOB No AA181

8638 DARBY AVENUE (714) 771-4221

NORTHDRIDGE, CA. 91325 (805) 684-4944

(818) 772-2220 FAX (818) 772-2239

CENTER FOR ADVANCED LEARNING TECHNOLOGY

SKYLINE COLLEGE

SAN MATEO COUNTY COMMUNITY COLLEGE DISTRICT

SAN BRUNO, CALIFORNIA 94066

3300 COLLEGE DRIVE

Δ	BID SET REVISIONS	10/25/01
Δ	DSA SUBMITTAL	06/15/01
NO.	DESCRIPTION	DATE BY
REVISION		

DRAWN	LOG
CHECKED	DK
DATE	03/21/01
JOB NO.	98-03
SHEET TITLE	
SYMBOL LIST, DETAIL AND SHEET INDEX	
SHEET	
E-1.0	
OF	