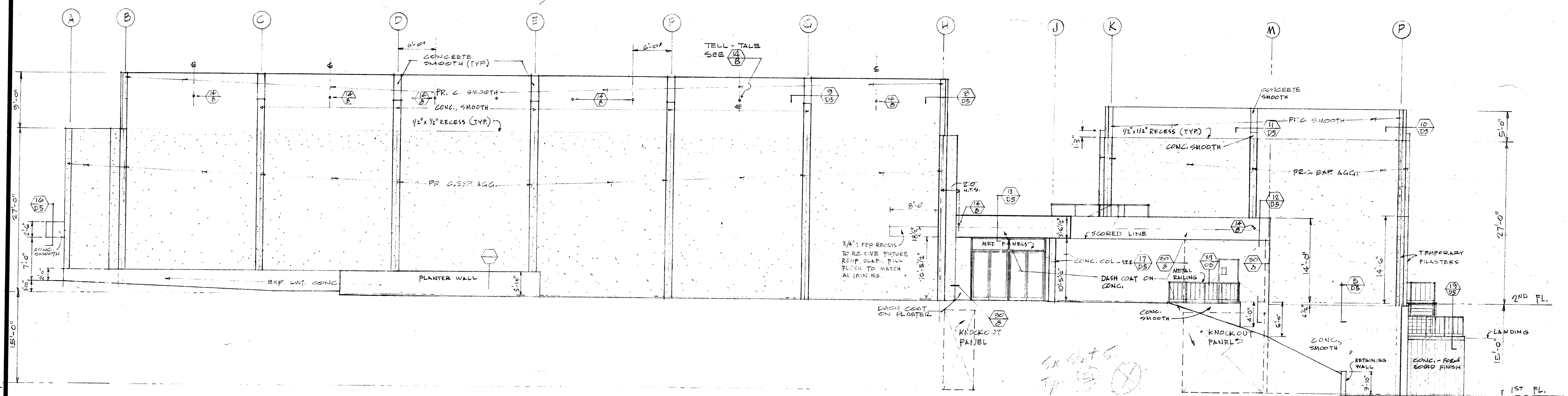
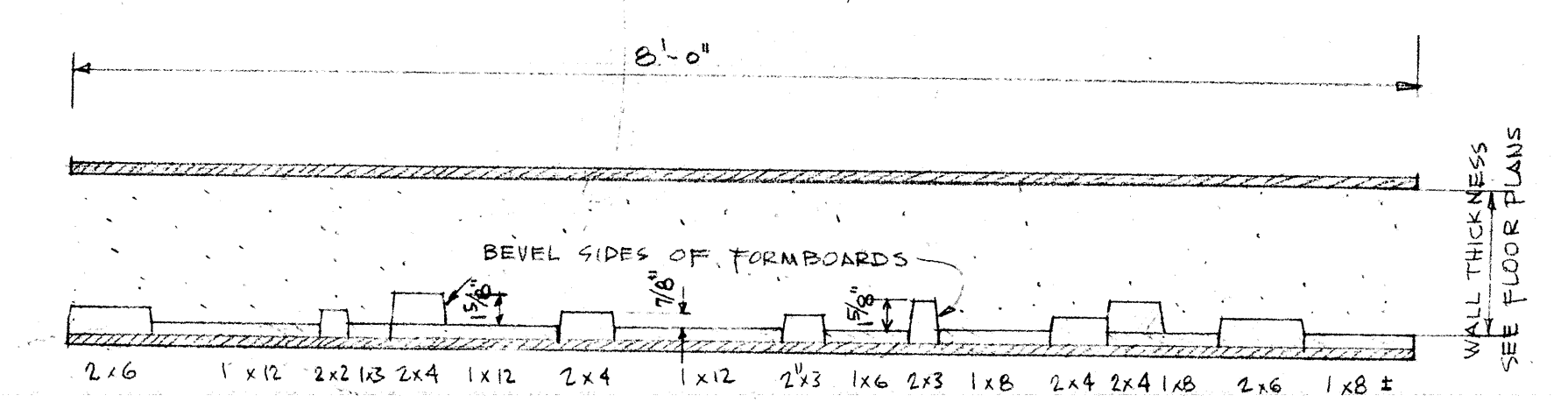


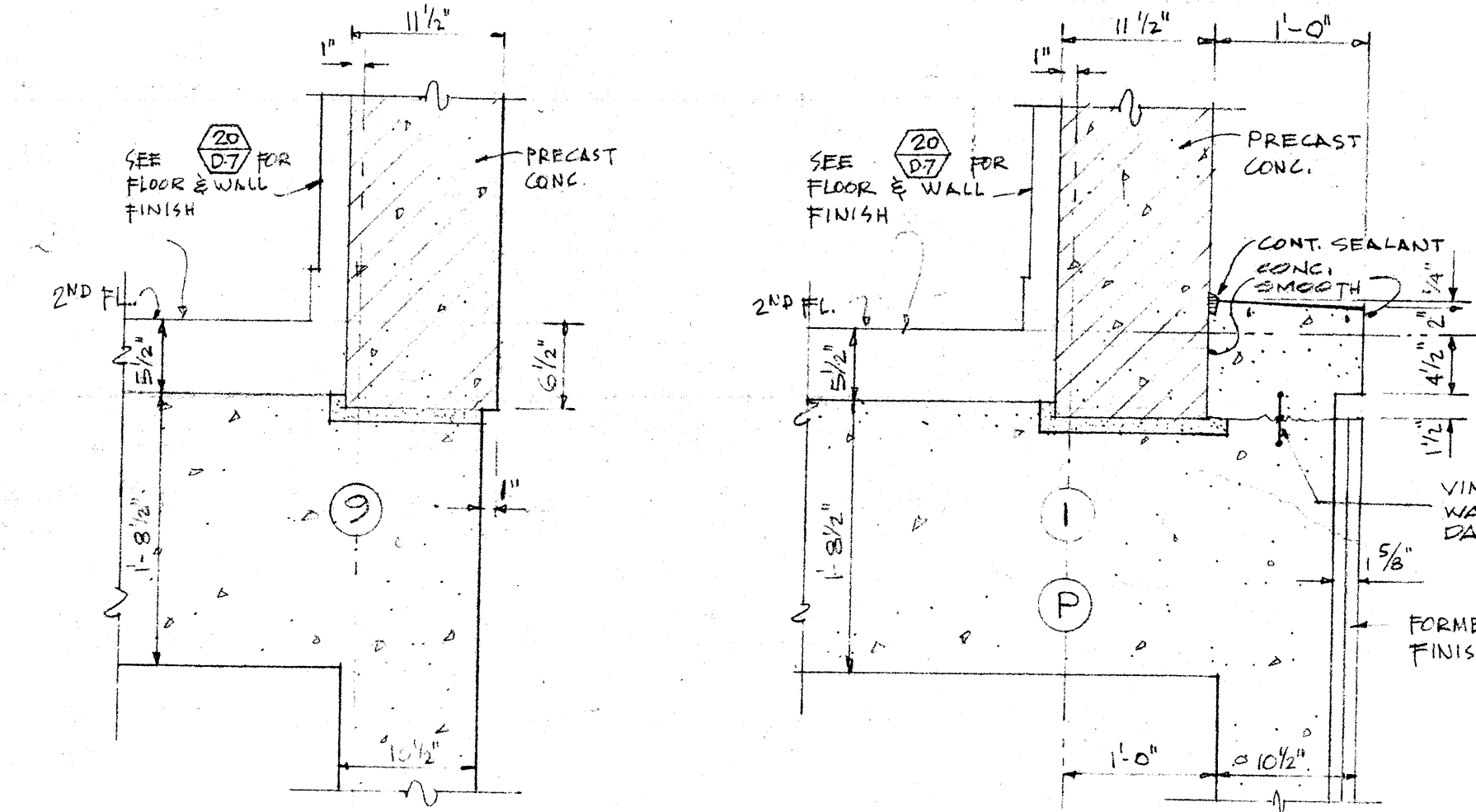
NORTH ELEVATION (1/DS) 1/8" = 1'-0"



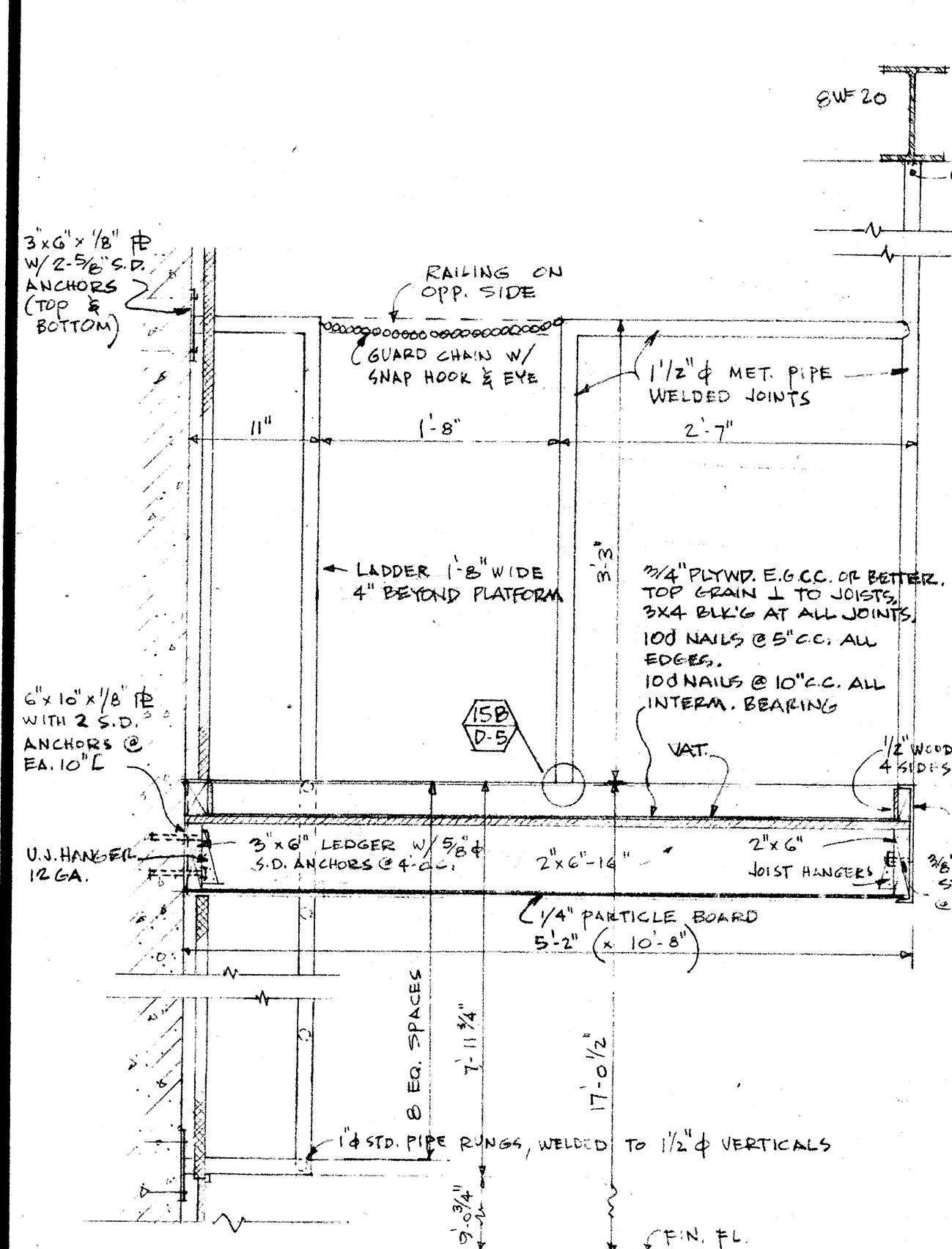
SOUTH ELEVATION (2/DS) 1/8" = 1'-0"



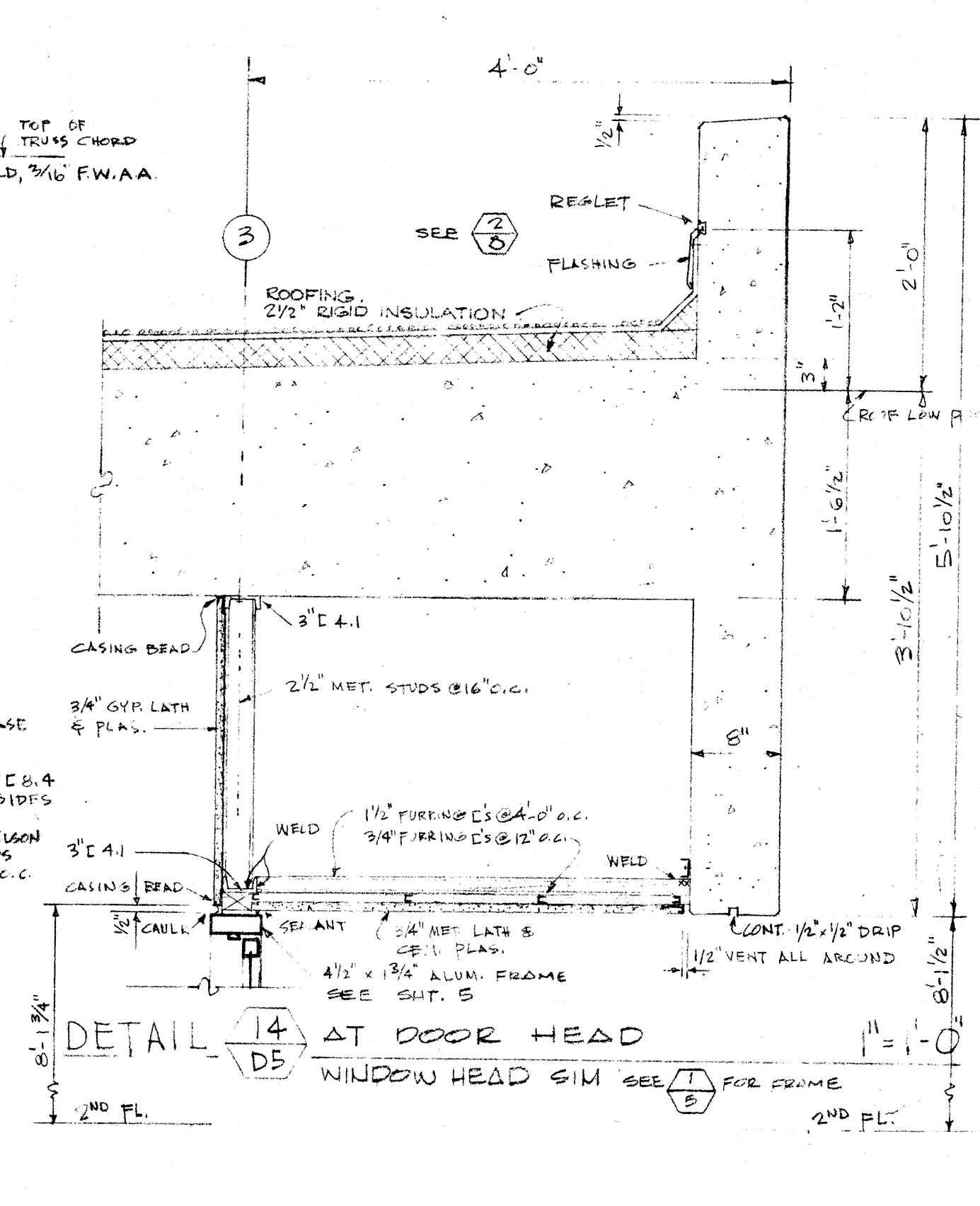
CONCRETE WALL FORMBOARDS 1" = 1'-0"



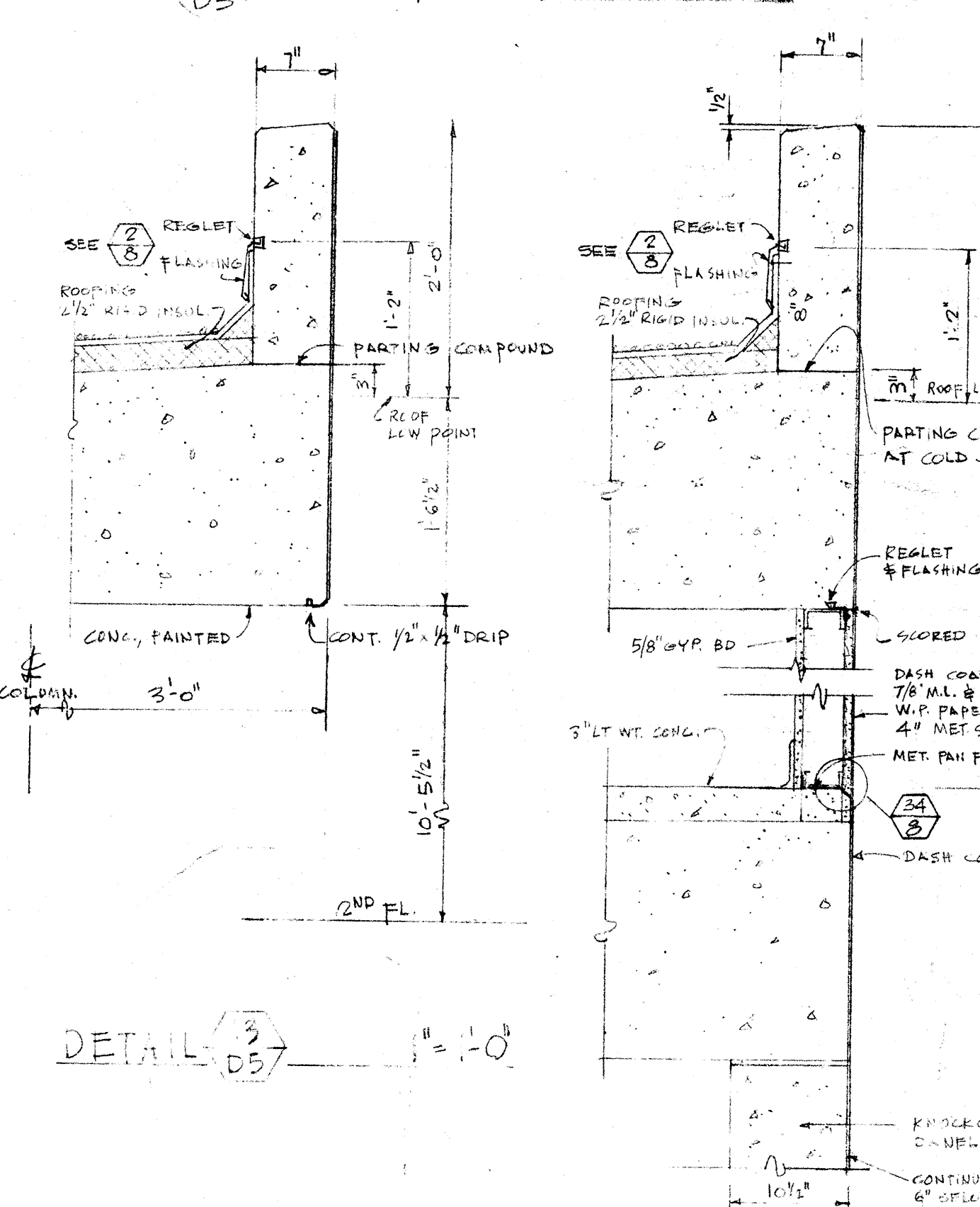
DETAIL 3/DS 1" = 1'-0" DETAIL 4/DS 1" = 1'-0"



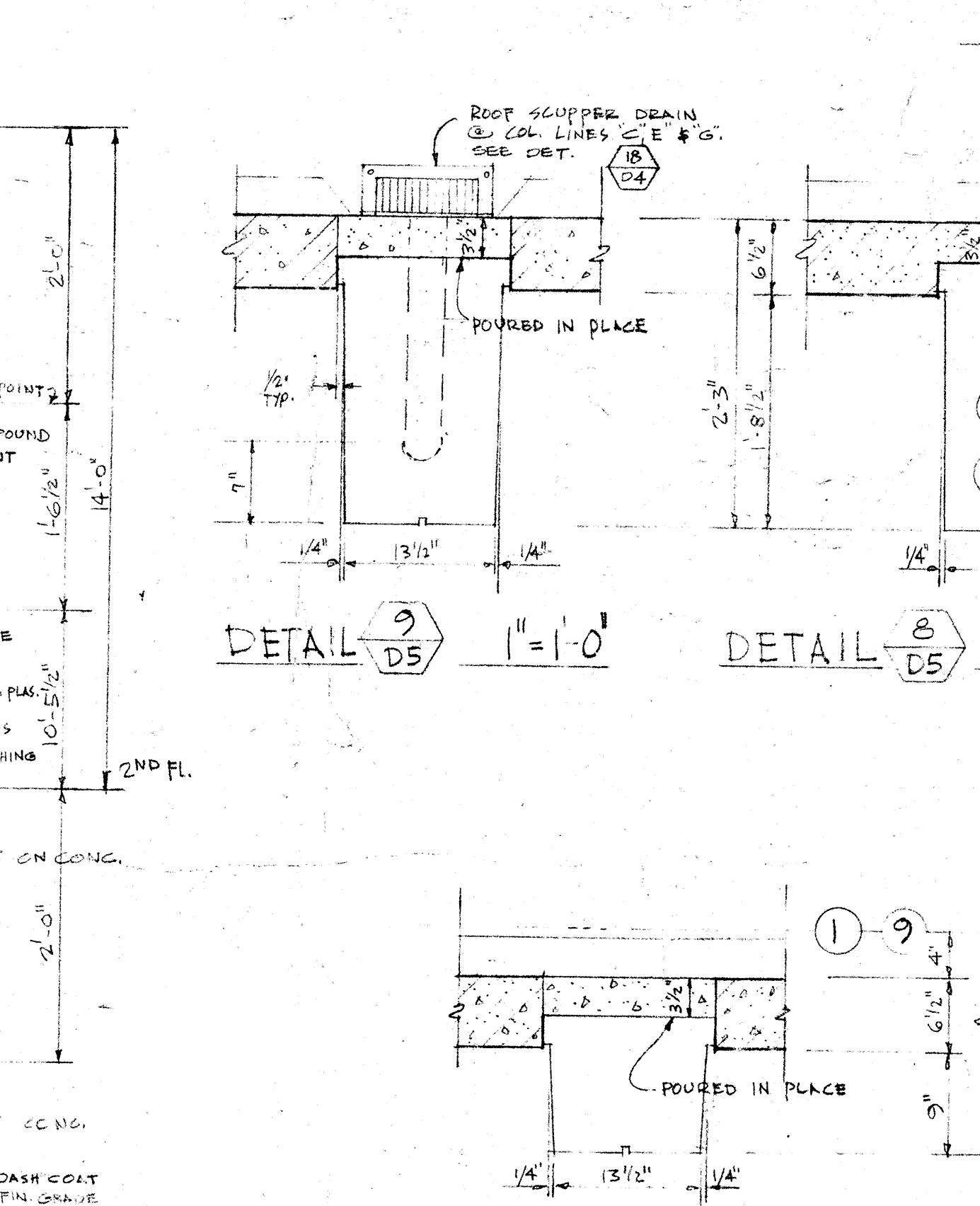
15/DS T.V. PLATFORM 1" = 1'-0"



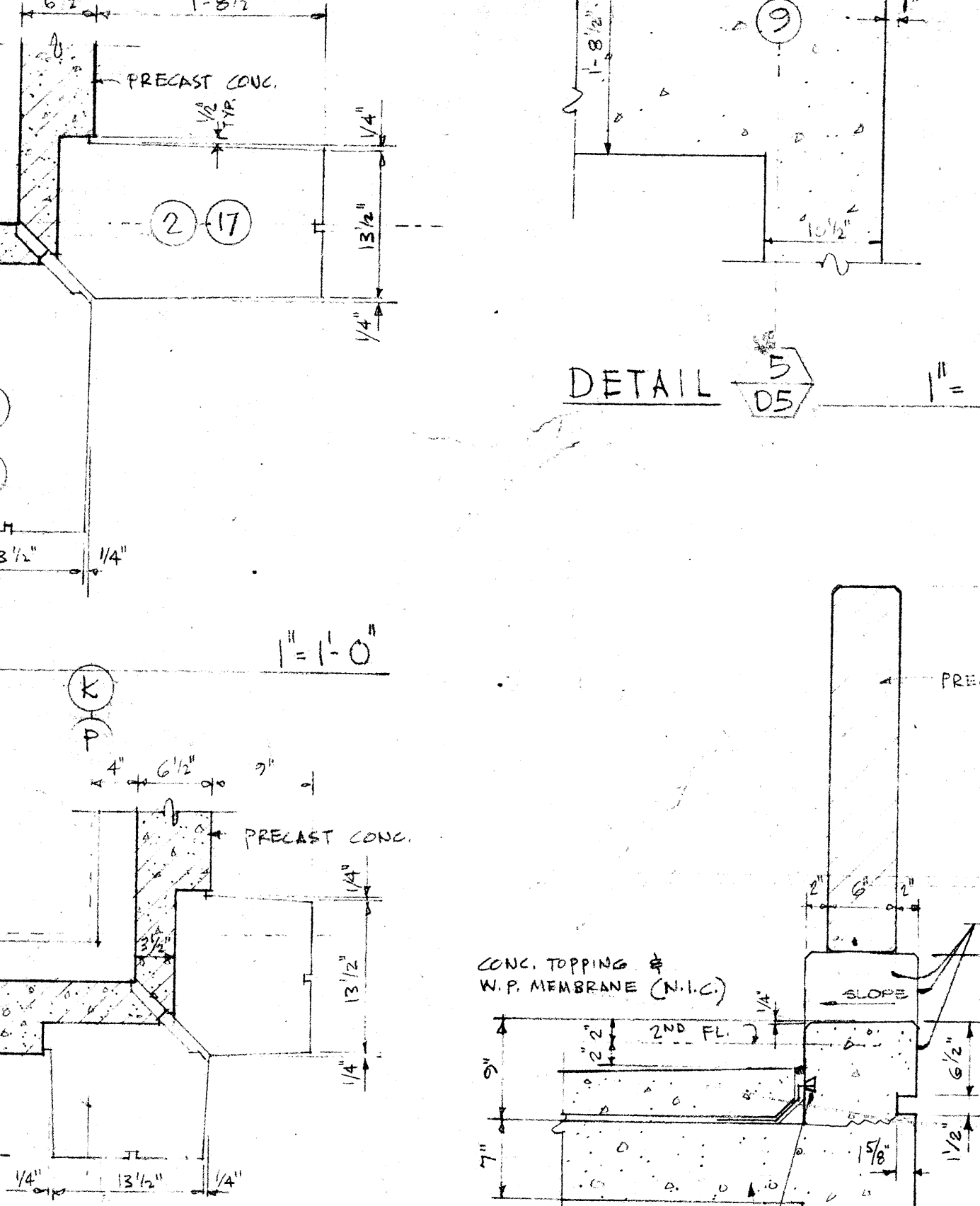
14/DS AT WINDOW HEAD 1" = 1'-0"



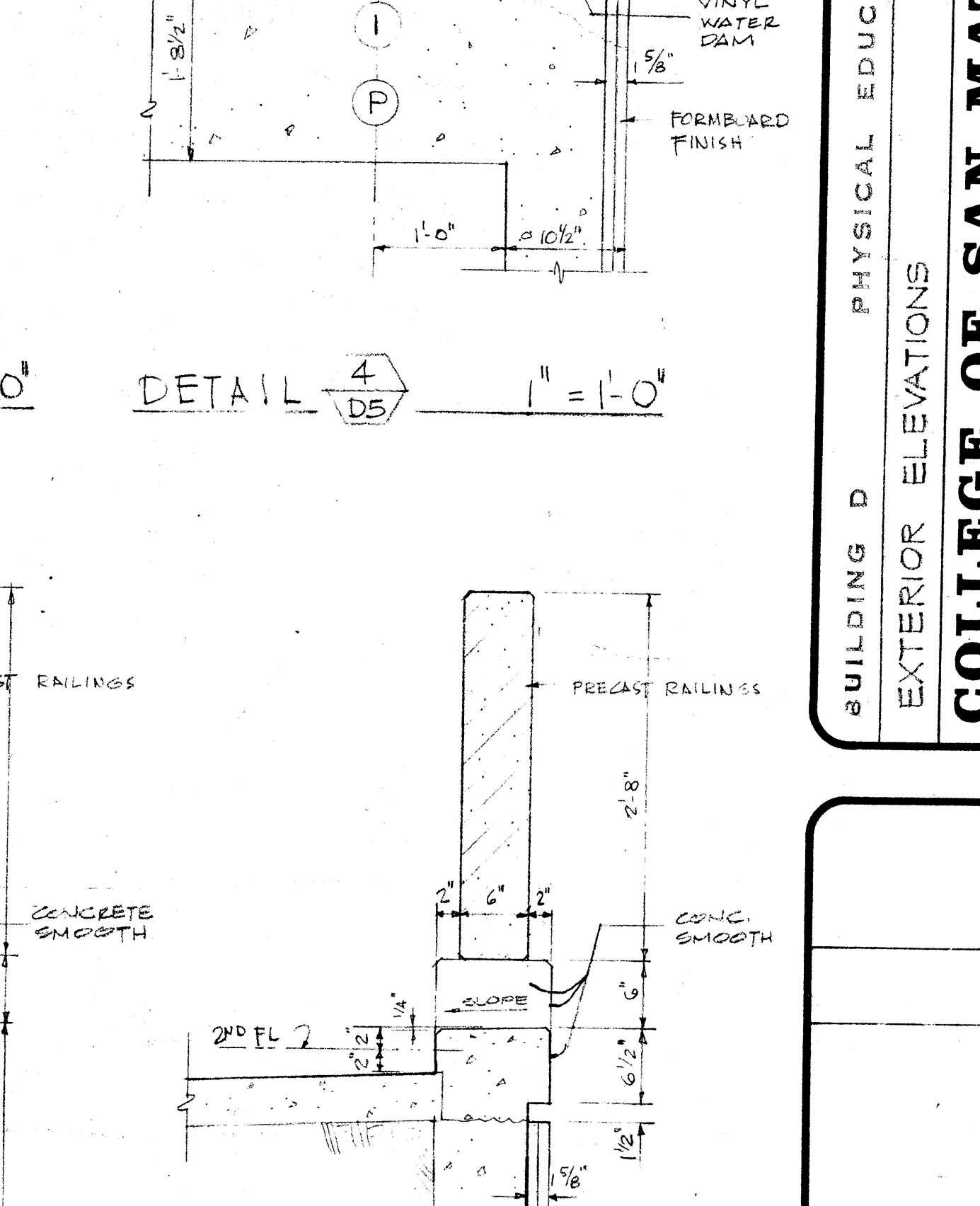
13/DS AT DOOR HEAD 1" = 1'-0"



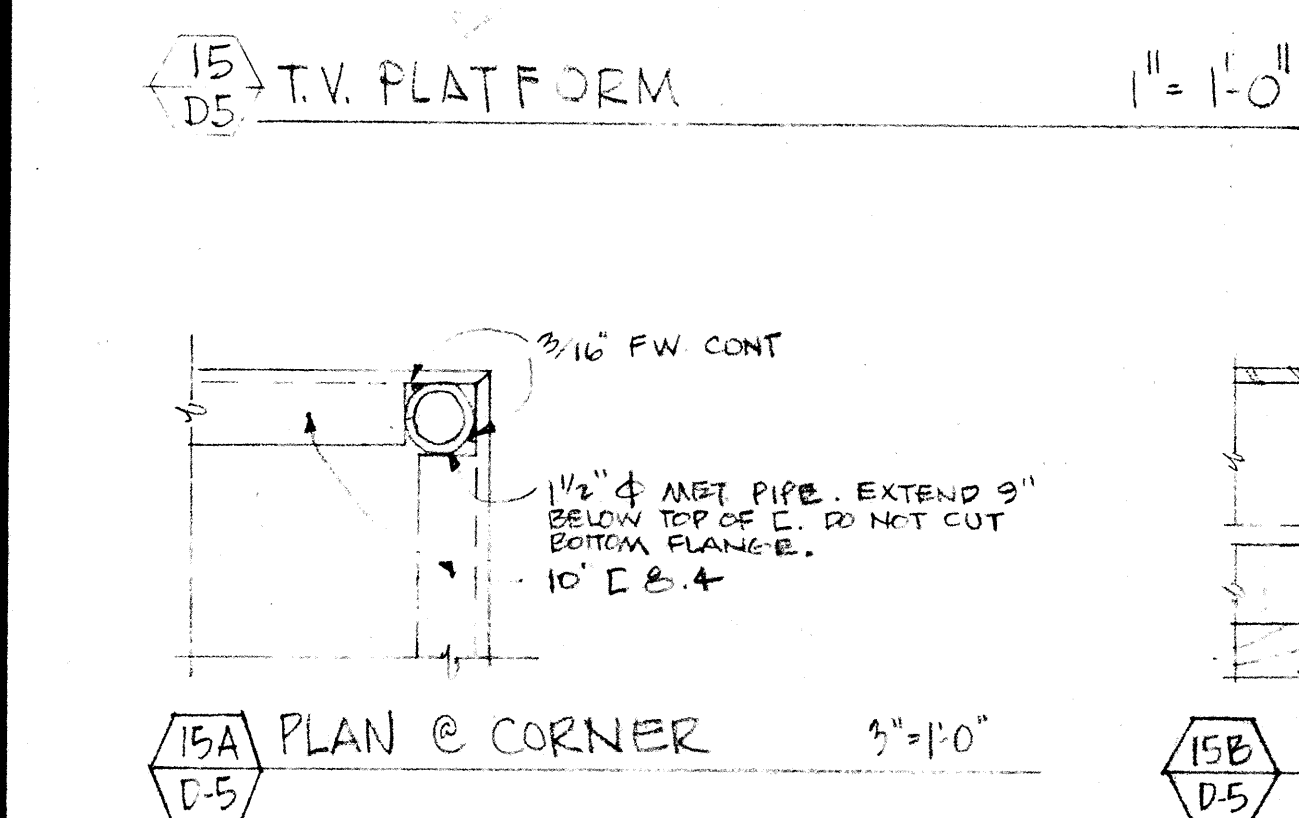
12/DS AT DOOR SILL 1" = 1'-0"



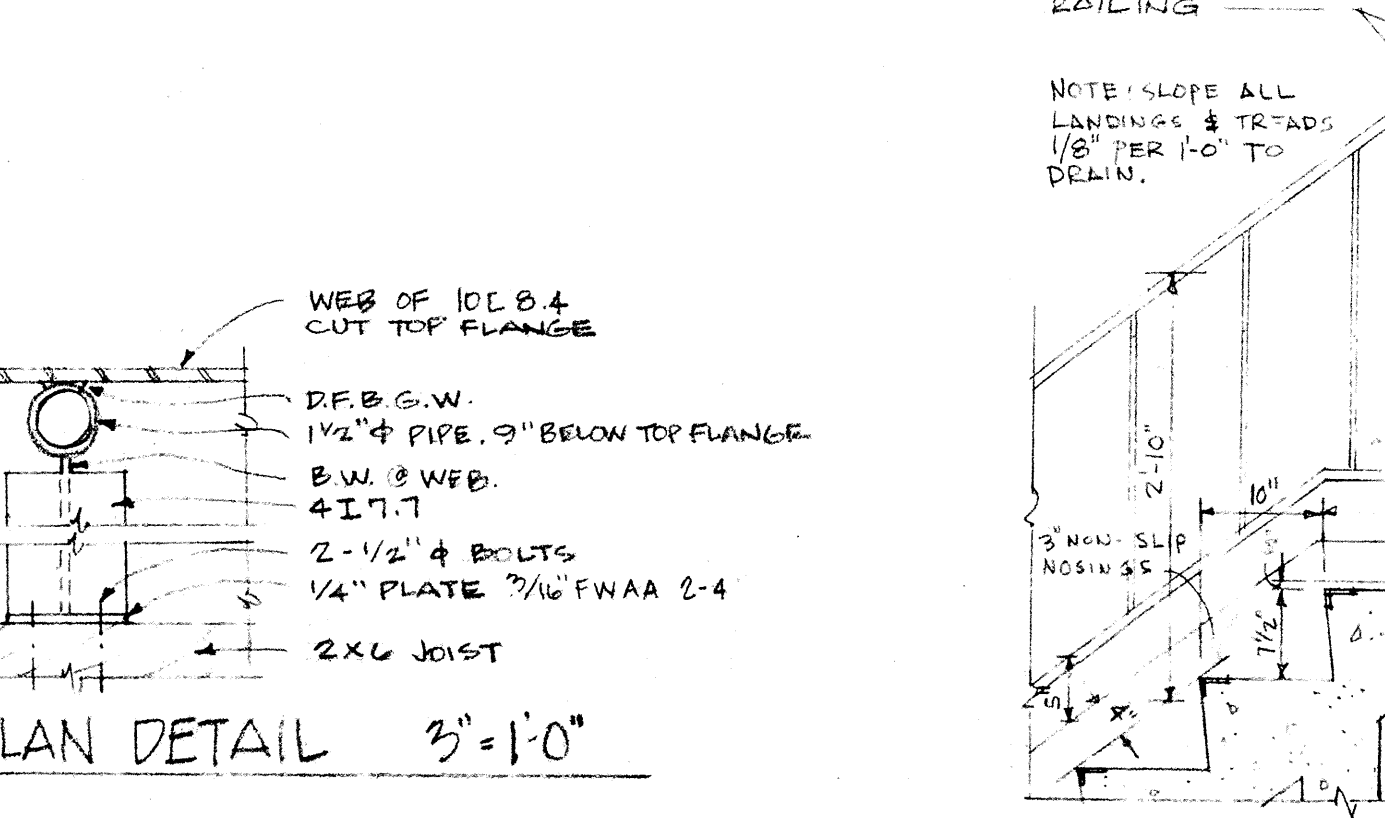
11/DS AT DOOR FRAME 1" = 1'-0"



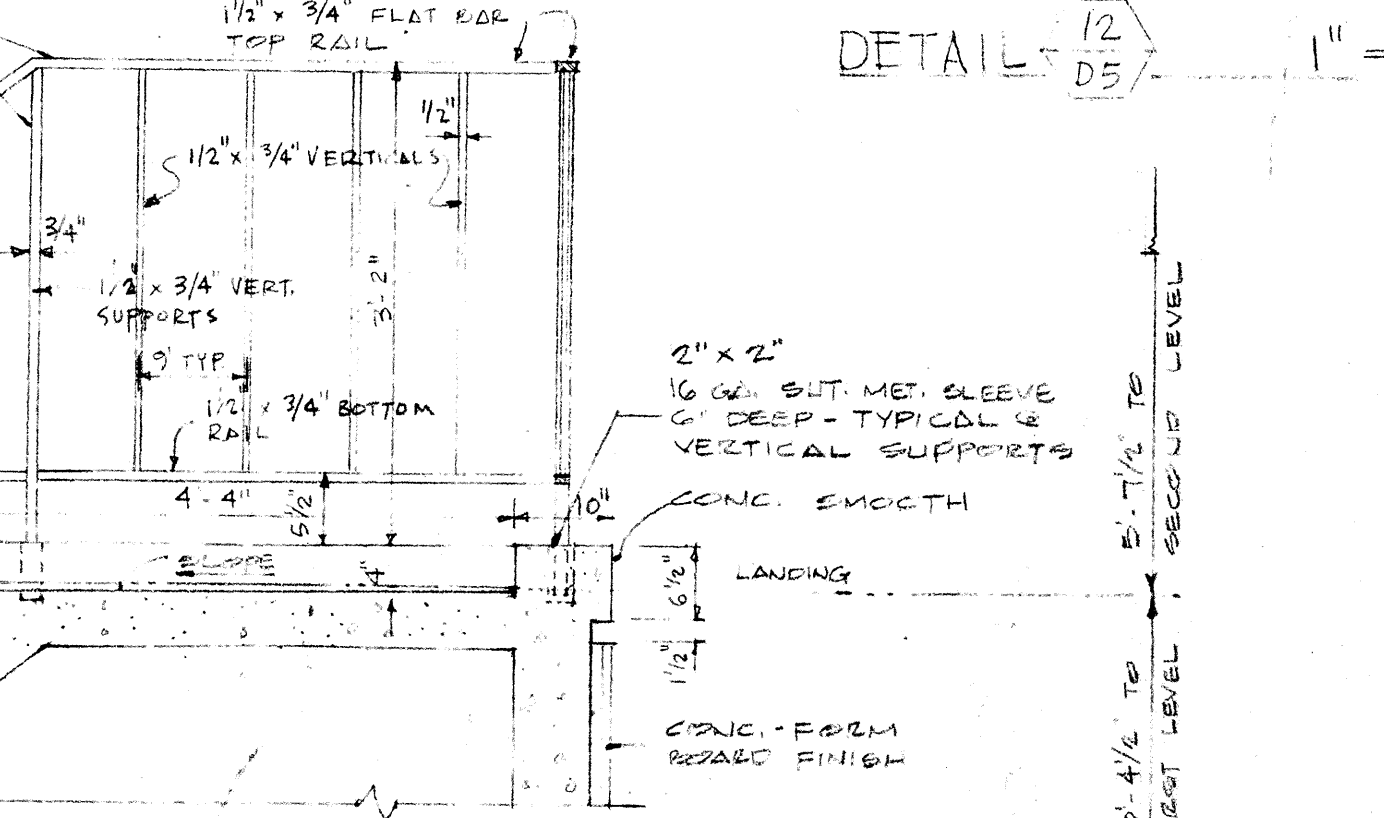
10/DS AT DOOR FRAME 1" = 1'-0"



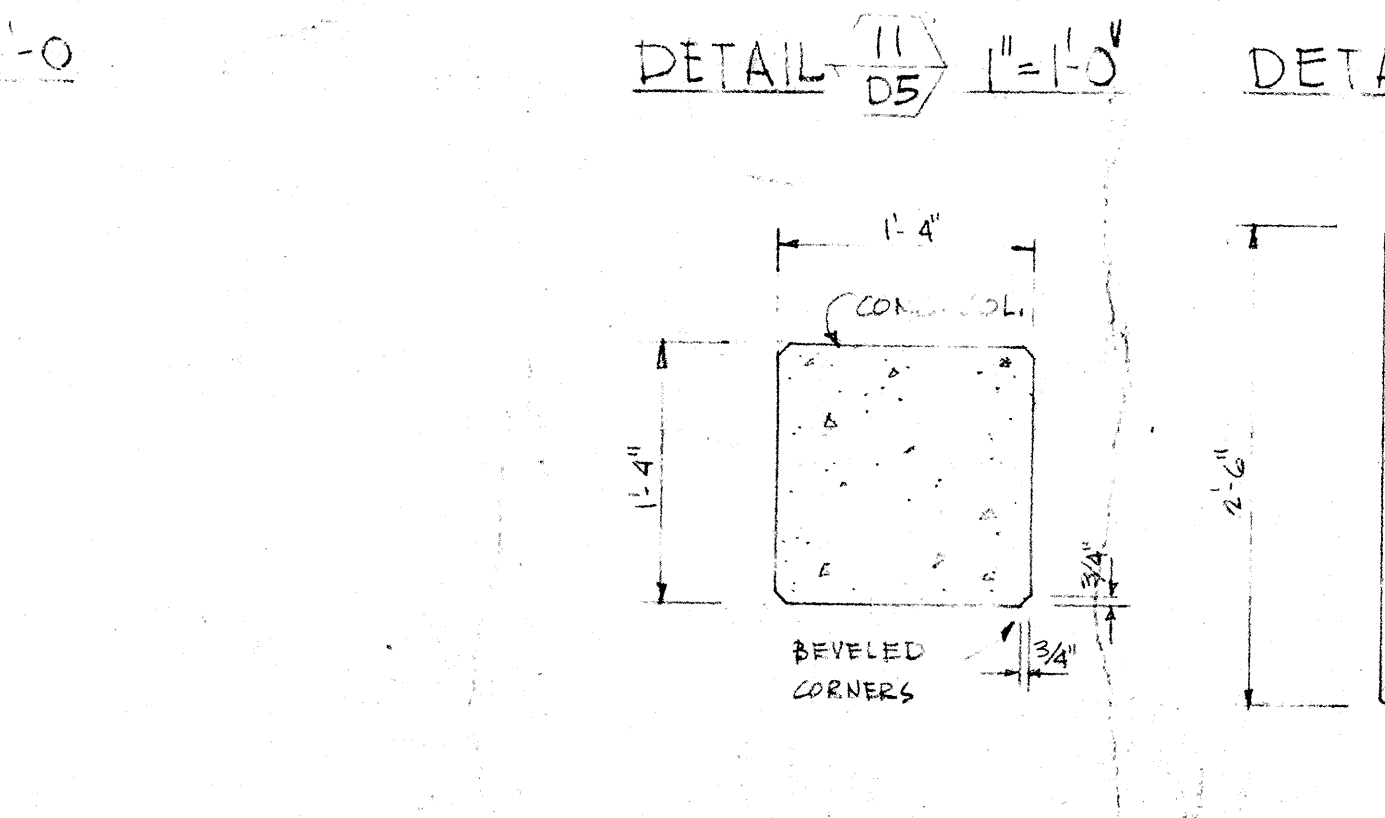
15A/DS PLAN @ CORNER 3/4" = 1'-0"



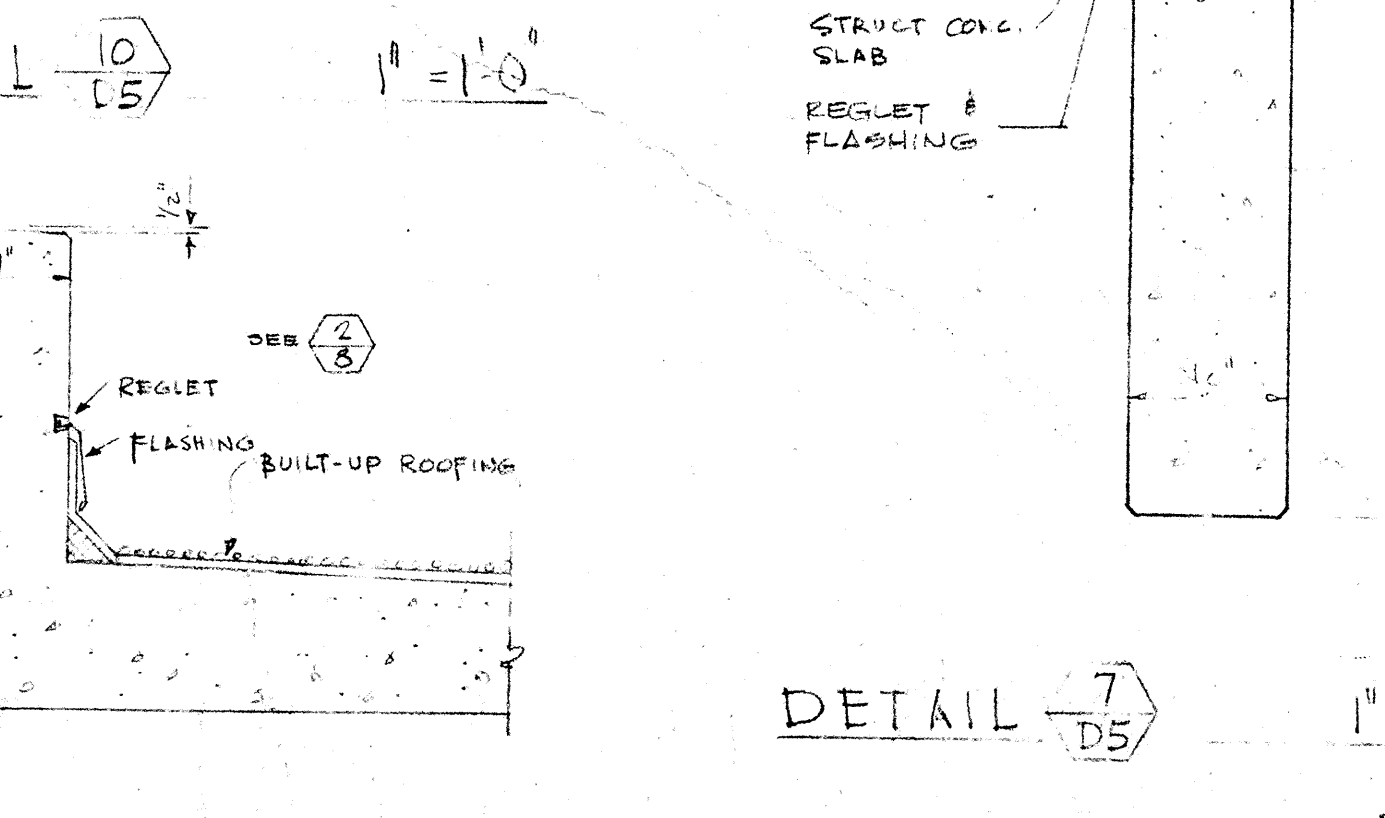
15B/DS PLAN @ CORNER 3/4" = 1'-0"



19/DS STAIR 3/4" = 1'-0"



17/DS AT DOOR FRAME 1" = 1'-0"



16/DS AT DOOR FRAME 1" = 1'-0"

JOHN CARL WARNECKE P.A.L.L.
JOHN CARL WARNECKE AND ASSOCIATES
 ARCHITECTS AND PLANNING CONSULTANTS
 61 NEW MONTGOMERY STREET SAN FRANCISCO

BAROORE THOMPSON
 STRUCTURAL ENGINEER
 MECH. & ELEC. ENGINEERS
 CARL E. KIRKER
 CIVIL ENGINEERS

WALTER V. TASSANARO
 JUNIOR COLLEGE DISTRICT
 SAN FRANCISCO
 277 24th ST. S.F. 4, CALIF.
 415 277 24th ST. S.F. 4, CALIF.

SAN BRUNO CALIFORNIA
COLLEGE OF SAN MATEO
 EXTERIOR ELEVATIONS
 PHYSICAL EDUCATION BUILDING D

SCALE AS SHOWN	JOB NO. 64-C-15	D.B. J.A. S.A.P.	CHECK BY	DATE FEB. 10, 1967	NO.	REVISION DESCRIPTION	DATE	APPROVED
SHEET NUMBER								
D 3								
OF 14 SHEETS								
REVISION NO.								