

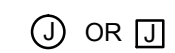


ELECTRICAL SYMBOL LIST

NOTE: This is a standard symbol list and not all items listed may be used.

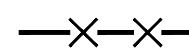
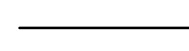
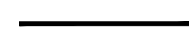
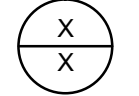

Abbreviations

(E)	EXISTING
A	AMPERES, AMPER
AIC	AVAILABLE INTERRUPTING CAPACITY
AWG	AMERICAN WIRE GAUGE
C	CONDUIT, CLOSE, CONTROL
CB	CIRCUIT BREAKER
CLG	CEILING
COORD	COORDINATE
CU	COPPER
DIM	DIMENSION
DWG	DRAWING
EA	EACH
EL	ELEVATION
FT	FOOT, FEET
G, GND	GROUND
GFCI	GROUND FAULT CIRCUIT INTERRUPTER
GFI	GROUND FAULT INTERRUPTER
HT	HEIGHT
IN	INCH, INCHES
KVA	KILOVOLT AMPERES
KW	KILOWATT
LED	LIGHT EMITTING DIODE
MIN	MINIMUM
MT, MTD	MOUNT, MOUNTED
N/A	NOT APPLICABLE
NEC	NATIONAL ELECTRIC CODE
NEMA	NATIONAL ELECTRICAL MANUFACTURERS ASSOCIATION
NTS	NOT TO SCALE
OC	ON CENTER
REQD	REQUIRED
RM	ROOM
S	SWITCH
SHT	SHEET
TYP	TYPICAL
UL	UNDERWRITERS LABORATORIES
UNO	UNLESS OTHERWISE NOTED
V	VOLTS, VOLTAGE
W/	WITH
W/O	WITHOUT

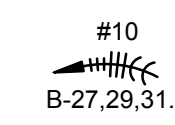


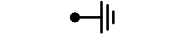
Connections / Equipment

	OR 	JUNCTION BOX
		WALL-MOUNTED JUNCTION BOX

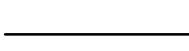
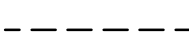
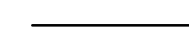
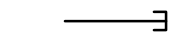
General

	DEMOLISH
	EXISTING WORK
	NEW WORK
	DETAIL NUMBER AND SHEET LOCATION
	KEYED NOTE


Miscellaneous

	BRANCH CIRCUIT WIRING. ARROW INDICATES HOME RUN TO PANEL WITH CIRCUITS AS NOTED. WIRE SIZE IS #12 AWG MINIMUM UNLESS NOTED OTHERWISE. SHORT TICK MARKS INDICATE PHASE CONDUCTORS. LONG TICK MARKS INDICATE NEUTRAL CONDUCTORS. A SINGLE CURVED TICK MARK INDICATES INSULATED GREEN GROUND CONDUCTOR. SECOND CURVED TICK MARK INDICATES 'ISOLATED GROUND' (GREEN INSULATION WITH YELLOW STRIPE) CONDUCTOR.
	BRANCH PANEL
	FLUSH WALL MOUNTED BRANCH PANEL
	GROUNDING POINT

Raceways

	CONDUIT CONCEALED IN WALL OR CEILING SPACE
	CONDUIT ROUTED BELOW FLOOR / GRADE
	CONDUIT/WIRING CONTINUATION
	CONDUIT/WIRING STUBBED OUT WITH END CAP OR INSULATED PLASTIC BUSHING

Switches and Receptacles

	DUPLEX RECEPTACLE
---	-------------------

GENERAL ELECTRICAL NOTES

- A. DO NOT COMMENCE INSTALLATION OF ELECTRICAL SYSTEMS AND EQUIPMENT WITHOUT RELATED SHOP DRAWING APPROVALS.
- B. ELECTRICAL CIRCUITS SHALL BE INTERRUPTED ONLY WITH PRIOR WRITTEN CONSENT. SUCH INTERRUPTIONS SHALL BE PRECEDED BY ALL POSSIBLE PREPARATIONS BY THE CONTRACTOR WHICH ARE NECESSARY TO KEEP THE ELECTRICAL CIRCUITS OFF FOR A MINIMUM PERIOD IN AN EXPEDITIOUS MANNER PURSUANT WITH GOOD WORKMANSHIP. THIS INCLUDES CIRCUIT TRACING TO IDENTIFY THE ELECTRICAL LOAD BEING SERVED AND THE ORIGIN OF THE CIRCUIT.
- C. COORDINATE WITH OWNER SO THAT WORK CAN BE SCHEDULED NOT TO INTERRUPT OPERATIONS, NORMAL ACTIVITIES, BUILDING ACCESS, ACCESS TO DIFFERENT AREAS. THE OWNER WILL COOPERATE TO THE BEST OF THEIR ABILITY TO ASSIST IN A COORDINATED SCHEDULE, BUT WILL REMAIN THE FINAL AUTHORITY AS TO TIME OF WORK PERMITTED.
- D. COORDINATE THE EXACT LOCATION OF EXISTING UTILITIES AND EQUIPMENT PRIOR TO COMMENCEMENT OF WORK. COMPENSATE THE OWNER FOR DAMAGES CAUSED BY THE FAILURE TO LOCATE AND PRESERVE UTILITIES. REPLACE DAMAGED ITEMS WITH NEW MATERIAL TO MATCH EXISTING.
- E. REMOVE EXISTING LUMINAIRES, SWITCHES, RECEPTACLES, AND OTHER ELECTRICAL EQUIPMENT AND DEVICES AND ASSOCIATED WIRING FROM WALLS, CEILINGS, FLOORS, AND OTHER SURFACES SCHEDULED FOR REMODELING, RELOCATION, OR DEMOLITION UNLESS SHOWN AS RETAINED OR RELOCATED ON DRAWINGS.
- F. MAINTAIN ELECTRICAL CONTINUITY OF EXISTING SYSTEMS. REMOVE OR RELOCATE ELECTRICAL BOXES, CONDUIT, WIRING, EQUIPMENT, LUMINAIRES, AND THE LIKE, AS REQUIRED IN REMOVED OR REMODELED AREAS IN THE EXISTING CONSTRUCTION AFFECTED BY THIS WORK.
- G. REMOVE AND RESTORE WIRING WHICH SERVES USABLE EXISTING OUTLETS CLEAR OF THE CONSTRUCTION OR DEMOLITION.
- H. IF EXISTING JUNCTION BOXES WILL BE MADE INACCESSIBLE, OR IF ABANDONED OUTLETS SERVE AS FEED THROUGH BOXES FOR OTHER EXISTING ELECTRICAL EQUIPMENT WHICH IS BEING RETAINED, PROVIDE NEW CONDUIT AND WIRE TO BYPASS THE ABANDONED OUTLETS.
- I. IF EXISTING CONDUITS PASS THROUGH PARTITIONS OR CEILING WHICH ARE BEING REMOVED OR REMODELED, PROVIDE NEW CONDUIT AND WIRE TO REROUTE CLEAR OF THE CONSTRUCTION OR DEMOLITION AND MAINTAIN SERVICE TO THE EXISTING LOAD.
- J. CONCEALED CONDUIT LOCATED IN CONCRETE WALLS OR HARDBOARD CEILING SPACES MAY BE ABANDONED IN PLACE, REMOVE CONDUCTORS AND TAG ABANDONED CONDUITS WITH CORRESPONDING SYSTEM AND TERMINATION POINT. CUT AND CAP ABANDONED CONDUIT. DO NOT EXTEND STUBS ABOVE FINISHED FLOOR.
- K. EXTEND CIRCUITING AND DEVICES IN EXISTING WALLS TO BE FURRED OUT.
- L. PROVIDE TEMPORARY SUPPORT FOR ELECTRICAL SYSTEMS THAT REMAIN IN PLACE.
- M. VERIFY EXACT LOCATION AND NUMBER OF EXISTING ELECTRICAL OUTLETS AND LUMINAIRES IN THE FIELD. LOCATIONS OF ITEMS SHOWN ON DRAWINGS AS EXISTING ARE PARTIALLY BASED ON RECORD AND OTHER DRAWINGS WHICH MAY CONTAIN ERRORS. VERIFY THE ACCURACY OF THE INFORMATION SHOWN PRIOR TO BIDDING AND PROVIDE SUCH LABOR AND MATERIAL AS IS NECESSARY TO ACCOMPLISH THE INTENT OF THE CONTRACT DOCUMENTS.
- N. REMOVE ABANDONED WIRING TO LEAVE SITE CLEAN.
- O. EXISTING LIGHTING WHICH IS TO REMAIN OR BE RELOCATED IS TO BE RELAMPED, REBALLASTED, AND CLEANED. LEAVE ALL LUMINAIRES IN PROPER WORKING ORDER. REPLACE DAMAGED OR BROKEN LENS AND/OR COMPONENTS.
- P. MAINTAIN ACCESS TO EXISTING ELECTRICAL INSTALLATIONS WHICH REMAIN ACTIVE. MODIFY INSTALLATION OR PROVIDE ACCESS PANEL AS APPROPRIATE.
- Q. WHERE DRAWINGS INDICATE EXISTING ELECTRICAL EQUIPMENT OR DEVICES TO BE RELOCATED AND/OR REUSED, REFURBISH THEM, THOROUGHLY CLEAN SUCH ITEMS, NOTIFY ARCHITECT OF ANY DEFECTS IN SUCH INSTALLATIONS. REPAIR ANY DAMAGE CAUSED BY DEMOLITION OR CONSTRUCTION PERFORMED UNDER THIS CONTRACT.
- R. PROVIDE UPDATED PANEL SCHEDULES AND DIRECTORIES THAT IDENTIFY EXISTING CIRCUITS AND NUMBER OF SPARE CIRCUITS AVAILABLE UPON COMPLETION OF DEMOLITION WORK.
- S. OFFER REMOVED LUMINAIRES, WIRING DEVICES, PANELBOARDS AND EQUIPMENT TO THE OWNER. IF OWNER CHOOSES TO RETAIN THESE ITEMS, RETURN SUCH ITEMS TO OWNER, CAREFULLY REMOVE AND DISPOSE OF ITEMS REJECTED BY OWNER FROM PROJECT SITE AND IN A LEGAL MANNER.
- T. RECONNECT EXISTING LUMINAIRES NOT SHOWN ON DRAWINGS AND AFFECTED DUE TO DEMOLITION TO NEAREST AVAILABLE EXISTING LIGHTING CIRCUIT ABLE TO TAKE THE ADDITIONAL LOAD.
- U. REFER TO SPECIFICATIONS FOR ADDITIONAL REQUIREMENTS.
- V. DRAWINGS AND SPECIFICATIONS COMPLIMENT EACH OTHER. REQUIREMENT BY EITHER INFERS REQUIREMENT BY BOTH.
- W. CONNECT EQUIPMENT AND DEVICES FURNISHED UNDER OTHER DIVISIONS OF THIS CONTRACT, BY OWNER OR BY OTHER CONTRACTS.
- X. UNLESS OTHERWISE NOTED, PROVIDE CONCEALED AND FLUSH MOUNTED INSTALLATION OF DEVICES AND EQUIPMENT IN AREAS.
- Y. PROVIDE SEPARATE EQUIPMENT GROUNDING CONDUCTOR IN 120 VOLT, MULTI-WIRE CIRCUITS.
- Z. FOR 120 VOLT, 20 AMP CIRCUITS, WHERE CIRCUIT DISTANCE FROM PANELBOARD TO FARTHEST DEVICE/FIXTURE EXCEEDS 75 FEET, PROVIDE #10 SIZE CONDUCTOR.
- AA. RUN ELECTRICAL CONDUIT CONCEALED AND PARALLEL TO BUILDING LINES. VERIFY WITH ARCHITECT.
- AB. RECEPTACLE OUTLETS SHALL COMPLY WITH CEC SECTION 210.7.
- AC. LIGHTS, SWITCHES AND CONTROL MECHANISMS SHALL COMPLY WITH CEC SECTION 404.
- AD. BRACE ELECTRICAL EQUIPMENT TO RESIST A HORIZONTAL FORCE THAT ACT IN ANY DIRECTION. COMPLY WITH TITLE 24 REQUIREMENTS.
- AE. INSTALL COMPLETE SYSTEM OF CONDUCTORS IN RACEWAY SYSTEM THROUGHOUT BUILDING FOR FEEDERS, BRANCH CIRCUITS, ETC.

SHEET INDEX

E0.1	SYMBOL LIST AND GENERAL NOTES - ELECTRICAL
E2.1	FLOOR PLAN - LIGHTING
E2.2	LIGHTING CONTROL FLOOR PLANS



Date Signed: 9/9/14

PROJECT CONTRACT
2014.0380
Jason Lau

717 Market Street,
Suite 500
Berkeley, CA 94703
Tel: 415.888.7240
Fax: 415.888.7289
www.interfaceengineering.com

LANDRY & BOGAN
THEATRE CONSULTANTS
783 W. Evelyn Ave, Mountain View, CA 94041
(650) 968-9185 Fax 968-6865
theatrelandb.com

SAN MATEO COUNTY COMMUNITY COLLEGE DISTRICT
CAÑADA/COLLEGE OF SAN MATEO
THEATER HOUSE LIGHTING RETROFIT
COLLEGE OF SAN MATEO - BUILDING 3
1700 WEST HILLSDALE BLVD., SAN MATEO, CA 94402

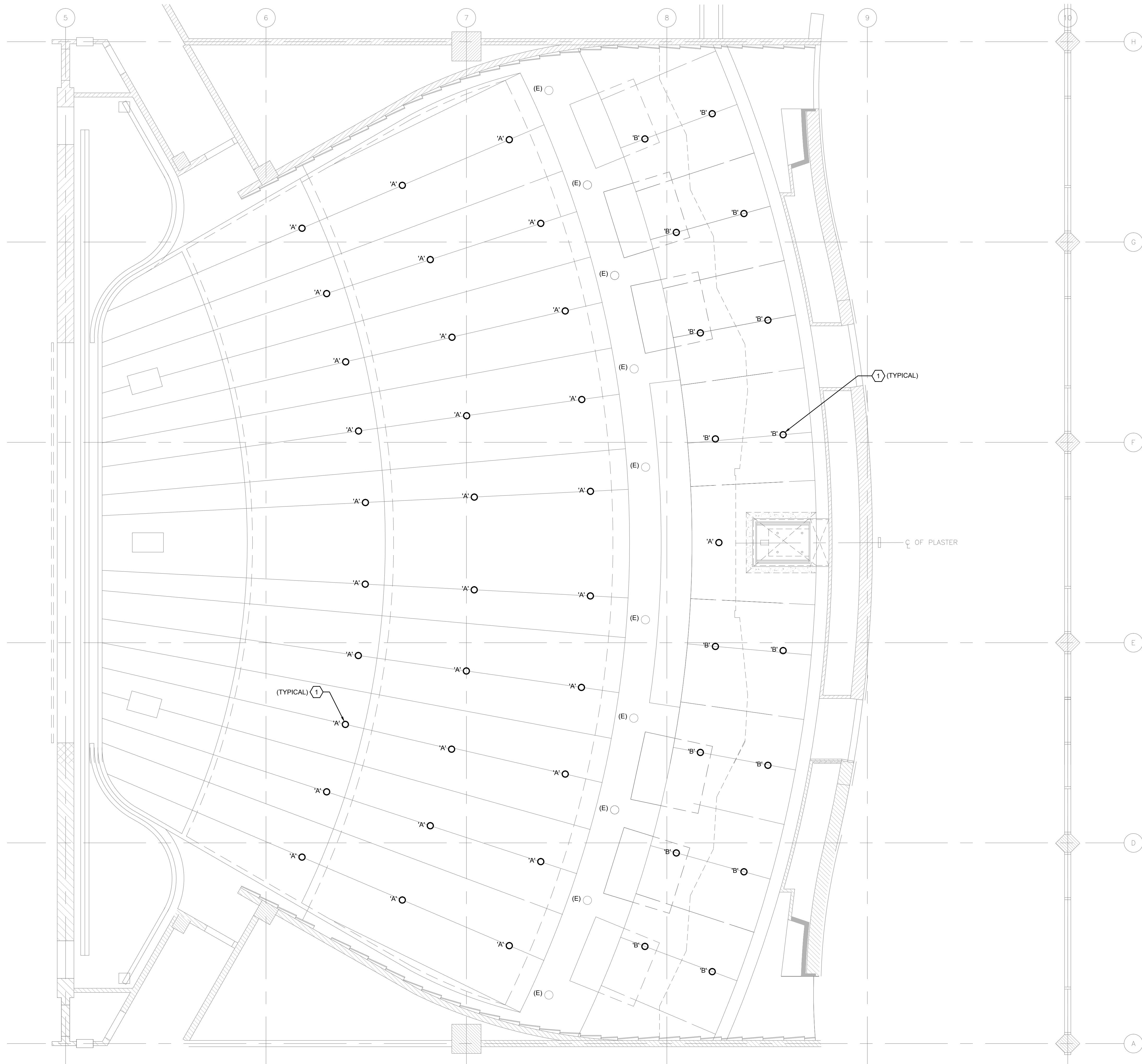
REVISIONS

.....

SHEET TITLE
THEATER HOUSE
LIGHTING RETROFIT
SYMBOL LIST AND
GENERAL NOTES
- ELECTRICAL

SCALE: NO SCALE
DATE: Sept. 9, 2014

E0.1



1 FLOOR PLAN - LIGHTING
 0 2' 4' 8'
 SCALE: 1/4"=1'-0"

GENERAL SHEET NOTES

- A. COORDINATE EXACT LOCATION AND MOUNTING HEIGHT OF LUMINAIRES AND LIGHTING CONTROLS WITH THEATRICAL LIGHTING CONSULTANT PRIOR TO INSTALLATION.
- B. REFER TO THEATRICAL LIGHTING CONSULTANT DRAWINGS FOR ADDITIONAL INFORMATION AND LIGHTING CONTROL REQUIREMENTS.
- C. REFER TO THEATRICAL LIGHTING CONSULTANT DRAWINGS FOR LUMINAIRE SCHEDULE AND SYMBOLS.
- D. EXISTING LUMINAIRES AND LIGHTING CONTROLS NOT SHOWN ON PLAN SHALL REMAIN, U.O.N.

SHEET KEYNOTES

- 1 DISCONNECT AND REUSE EXISTING LIGHTING CIRCUIT AS PART OF LED LUMINAIRE REPLACEMENT. LUMINAIRES TO BE RECONNECTED BACK TO EXISTING DIMMER RACK.

PROJECT CONTACT
 2014.0330
 Jason Lau

717 Market Street
 Suite 500
 San Francisco, CA 94103
 TEL: 415.488.7240
 FAX: 415.488.7289
 www.interfaceengineering.com

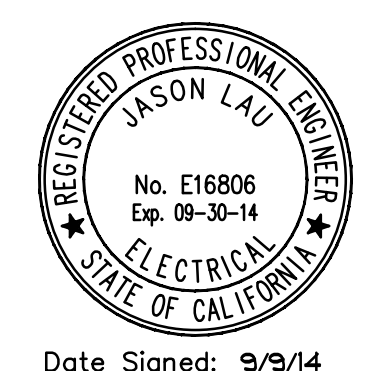
LANDRY & BOGAN
 THEATRE CONSULTANTS
 733 W. Evelyn Ave. Mountain View, CA 94041
 (650) 968-5185 Fax 968-6865
 theathr@landb.com

SAN MATEO COUNTY COMMUNITY COLLEGE DISTRICT
 CAÑADA/COLLEGE OF SAN MATEO
 THEATER HOUSE LIGHTING RETROFIT
 COLLEGE OF SAN MATEO - BUILDING 3
 1700 WEST HILLSDALE BLVD., SAN MATEO, CA 94402

REVISIONS

SHEET TITLE
**THEATER HOUSE
 LIGHTING RETROFIT
 FLOOR PLAN -
 LIGHTING**

SCALE: AS NOTED
 DATE: Sept. 9, 2014



Date Signed: 9/9/14

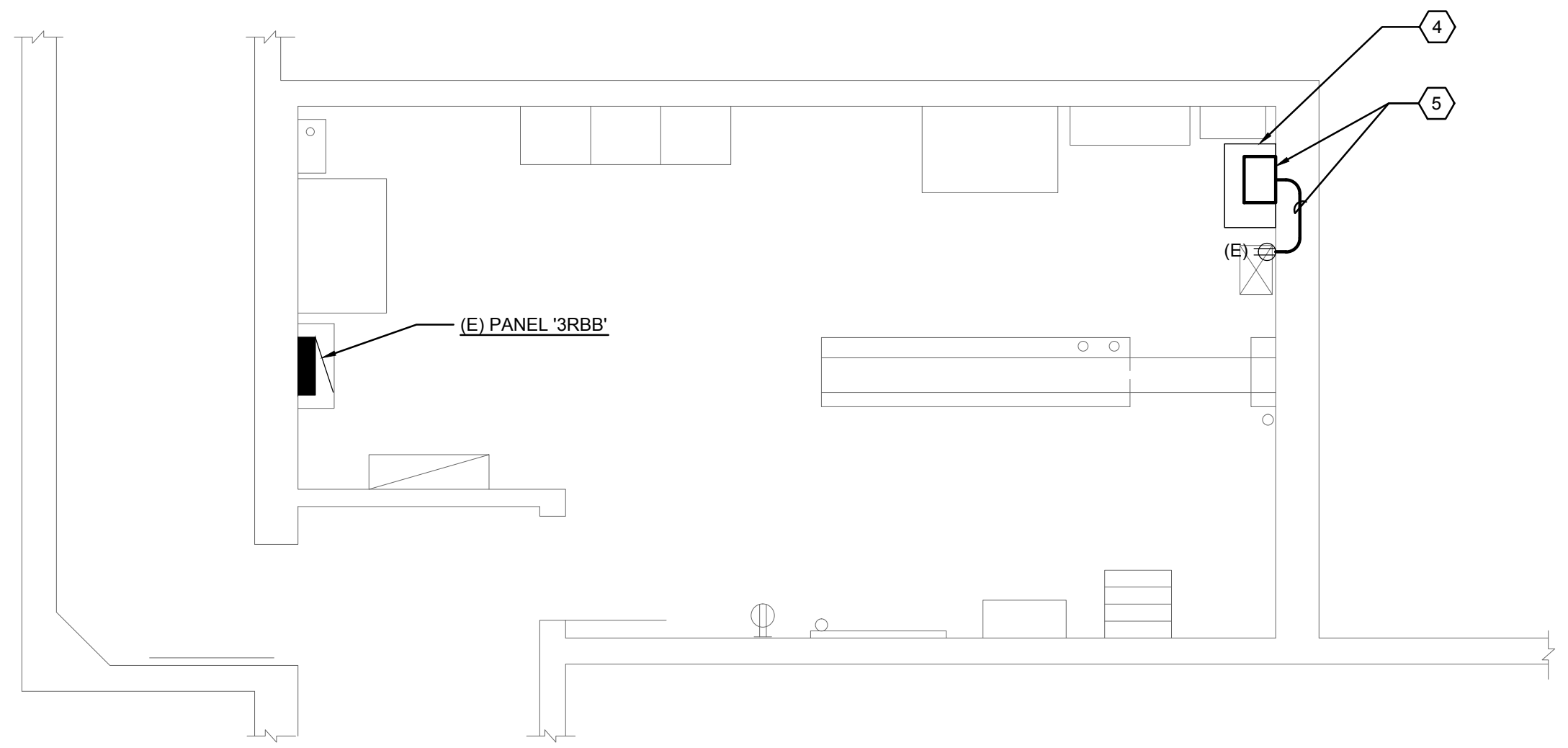
E2.1

GENERAL SHEET NOTES

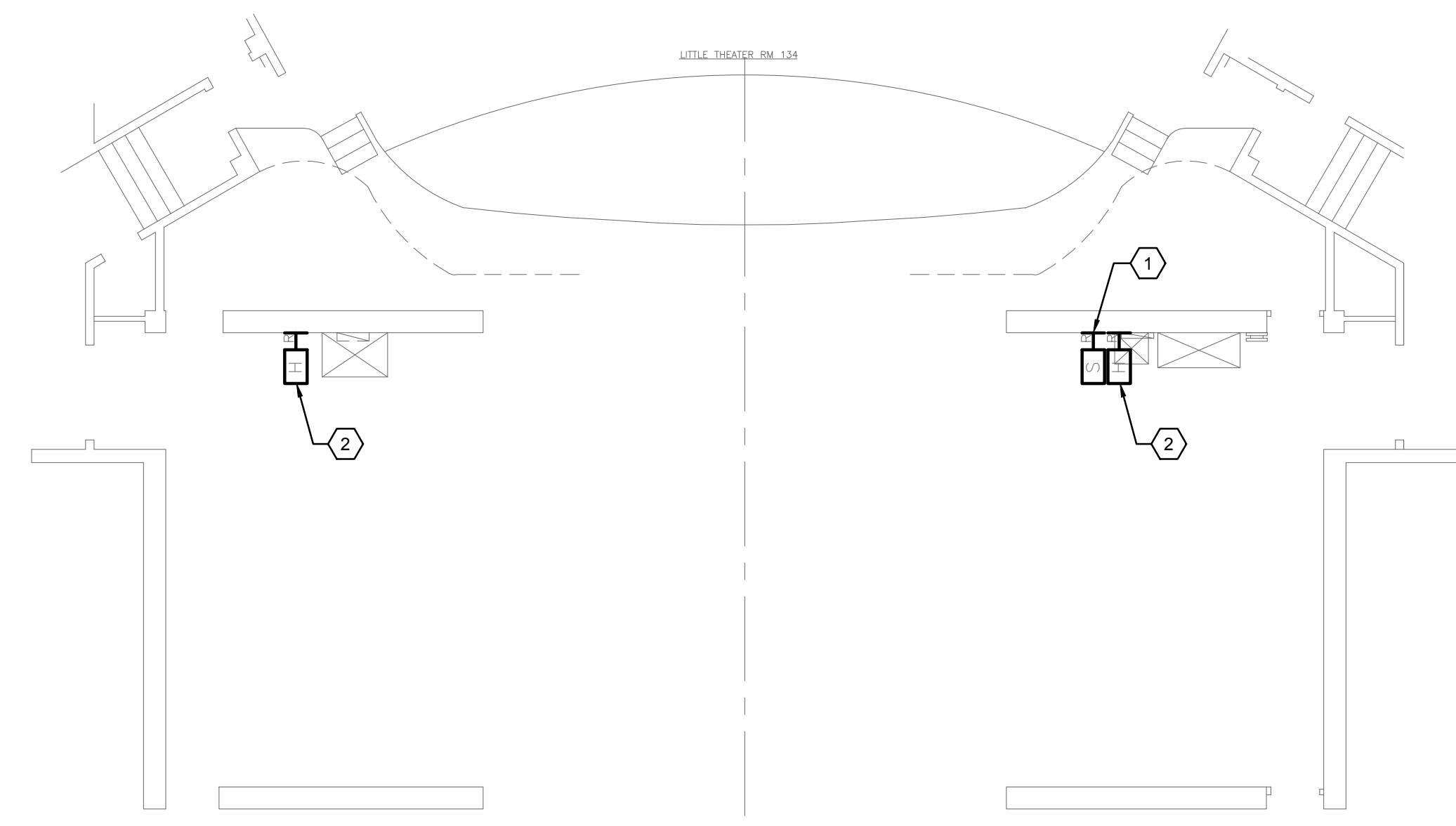
- A. COORDINATE EXACT LOCATION AND MOUNTING HEIGHT OF EQUIPMENTS AND LIGHTING CONTROLS WITH THEATRICAL LIGHTING CONSULTANT PRIOR TO INSTALLATION.
- B. REFER TO THEATRICAL LIGHTING CONSULTANT DRAWINGS FOR ADDITIONAL INFORMATION AND LIGHTING CONTROL REQUIREMENTS.
- C. EXISTING EQUIPMENTS AND LIGHTING CONTROLS NOT SHOWN ON PLAN SHALL REMAIN, U.O.N.

SHEET KEYNOTES

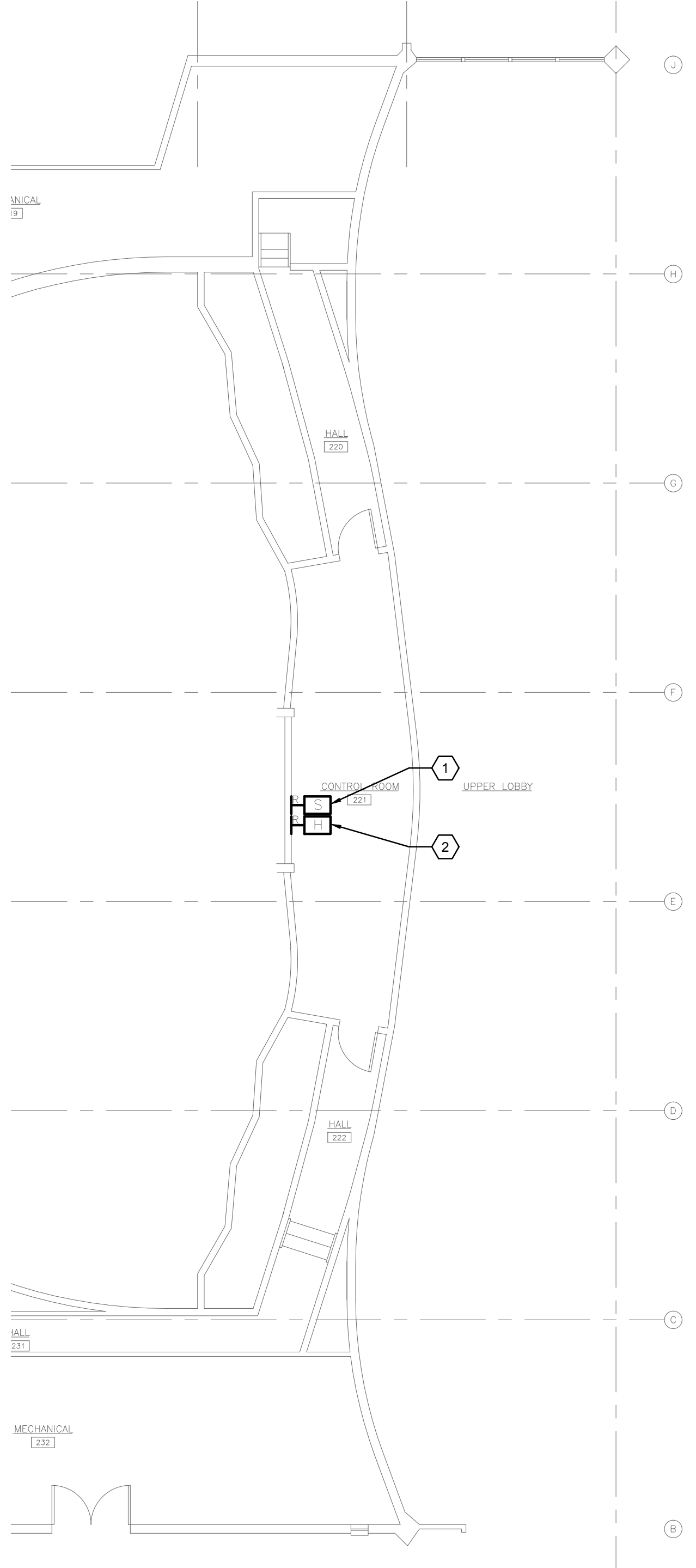
- 1. DISCONNECT AND REMOVE EXISTING UNISON SINGLE-GANG 10-BUTTON SNAPSHOT STATION AND REPLACE WITH NEW STATION 'S'. RECONNECT COMPLETE BACK TO EXISTING CIRCUIT TO PLACE BACK INTO SERVICE.
- 2. DISCONNECT AND REMOVE EXISTING UNISON SINGLE-GANG 5-BUTTON HOUSE/WORKLIGHT STATION AND REPLACE WITH NEW STATION 'HL'. RECONNECT COMPLETE BACK TO EXISTING CIRCUIT TO PLACE BACK INTO SERVICE.
- 3. DISCONNECT AND REMOVE EXISTING HOUSE LIGHT KEYSWITCH CONTROL STATION AND REPLACE WITH NEW STATION 'HLK'. RECONNECT COMPLETE BACK TO EXISTING CIRCUIT TO PLACE BACK INTO SERVICE.
- 4. EXISTING ETC UNISON ER-4 DR12 WALL MOUNTED DIMMER RACK TO REMAIN.
- 5. INSTALL NEW ETC UNISON PARADIGM ERn2 SIGNAL PROCESSOR RACK WITH SMALL 4-PORT NETWORK SWITCH. INTERCEPT AND EXTEND EXISTING CIRCUIT '3RBB-1' TO NEW RACK AND CONNECT COMPLETE AS REQUIRED TO PLACE INTO SERVICE.



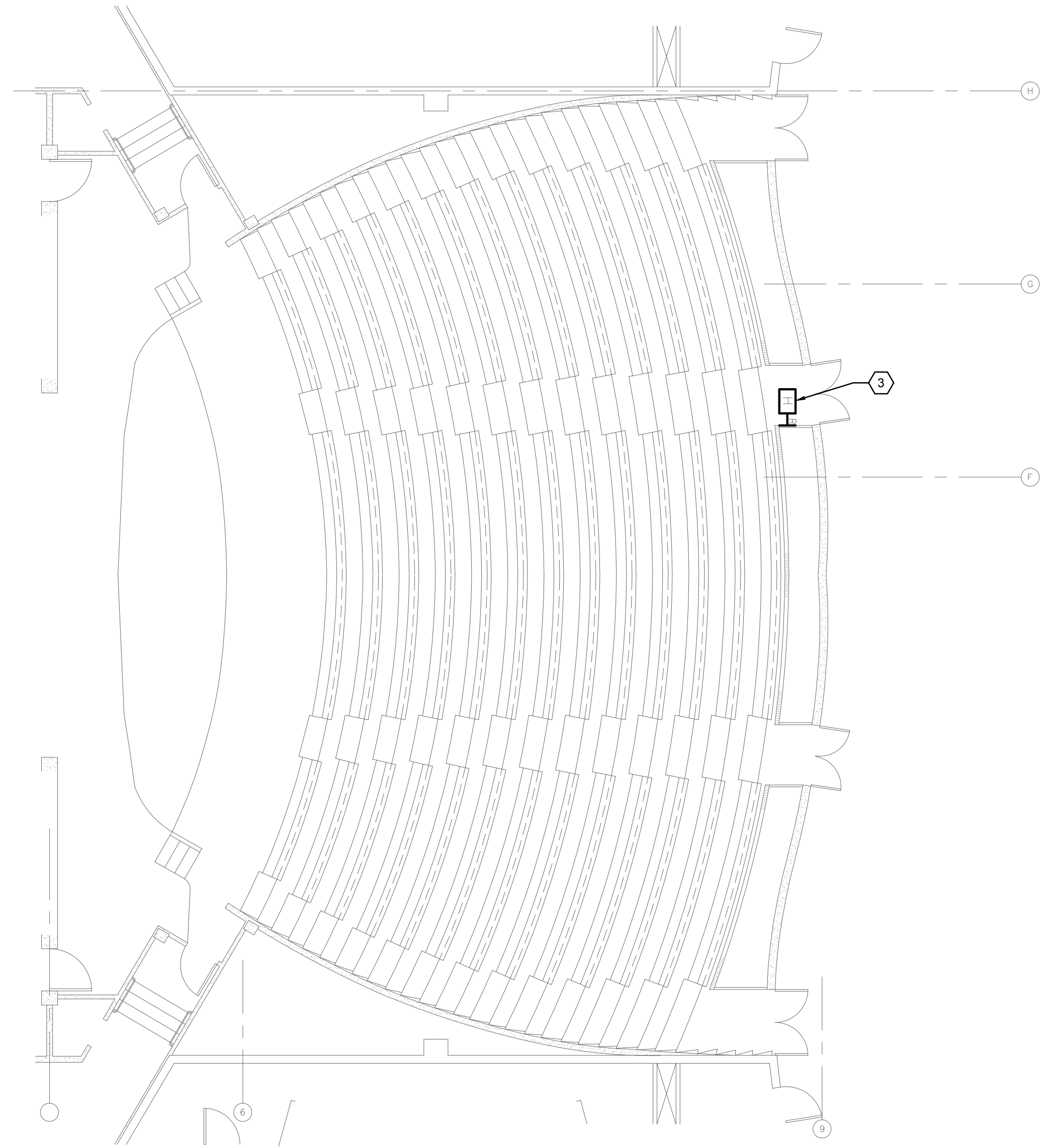
4 THEATER BASEMENT LEVEL ELECTRICAL ROOM PLAN
SCALE: 1/4"=1'-0"



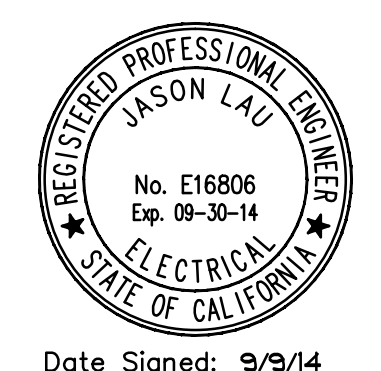
3 THEATER MAIN LEVEL STAGE PLAN
SCALE: 1/8"=1'-0"



2 CONTROL ROOM PLAN
SCALE: 1/8"=1'-0"



1 THEATER MAIN LEVEL AUDITORIUM PLAN
SCALE: 1/8"=1'-0"



Date Signed: 9/9/14