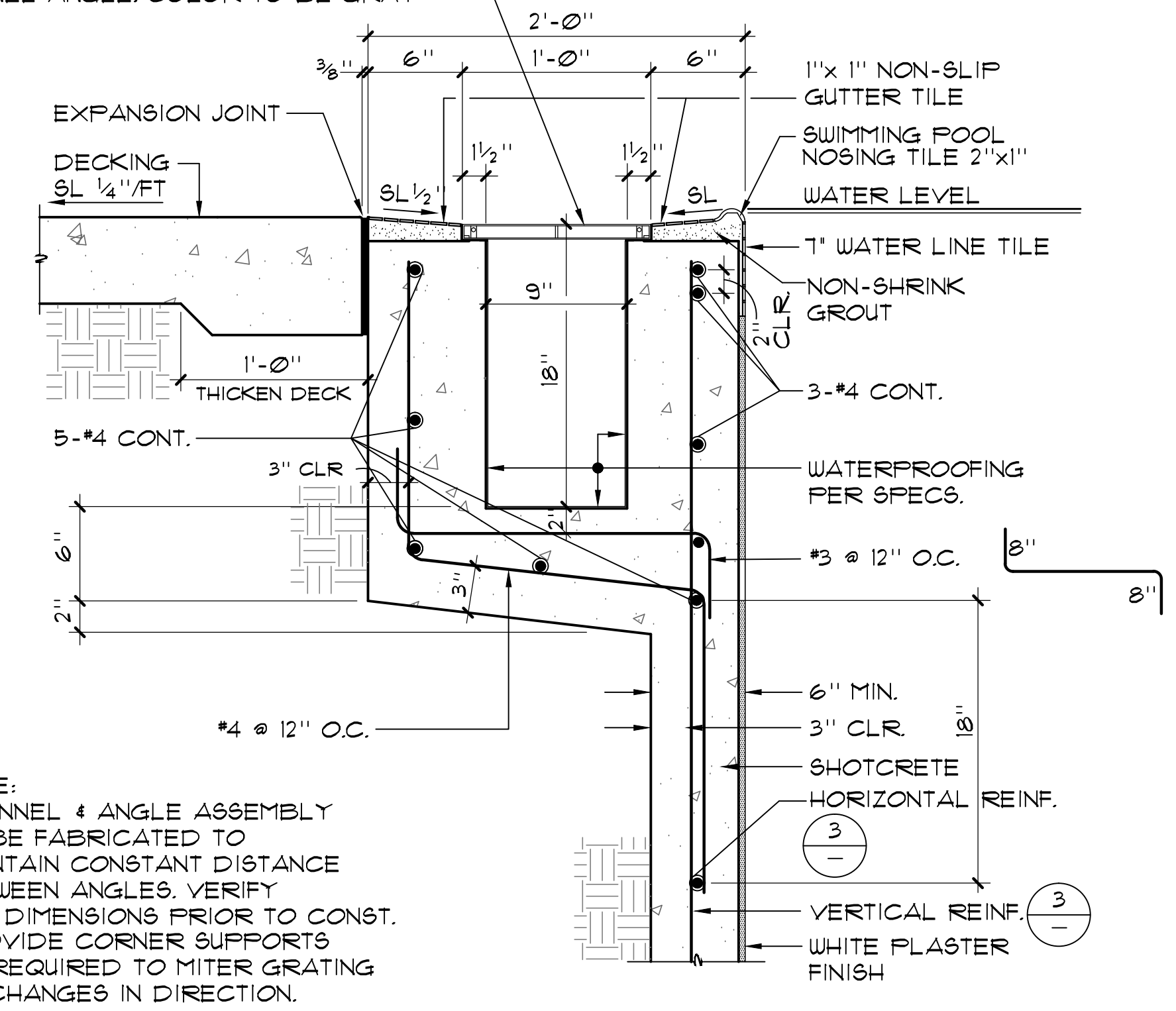
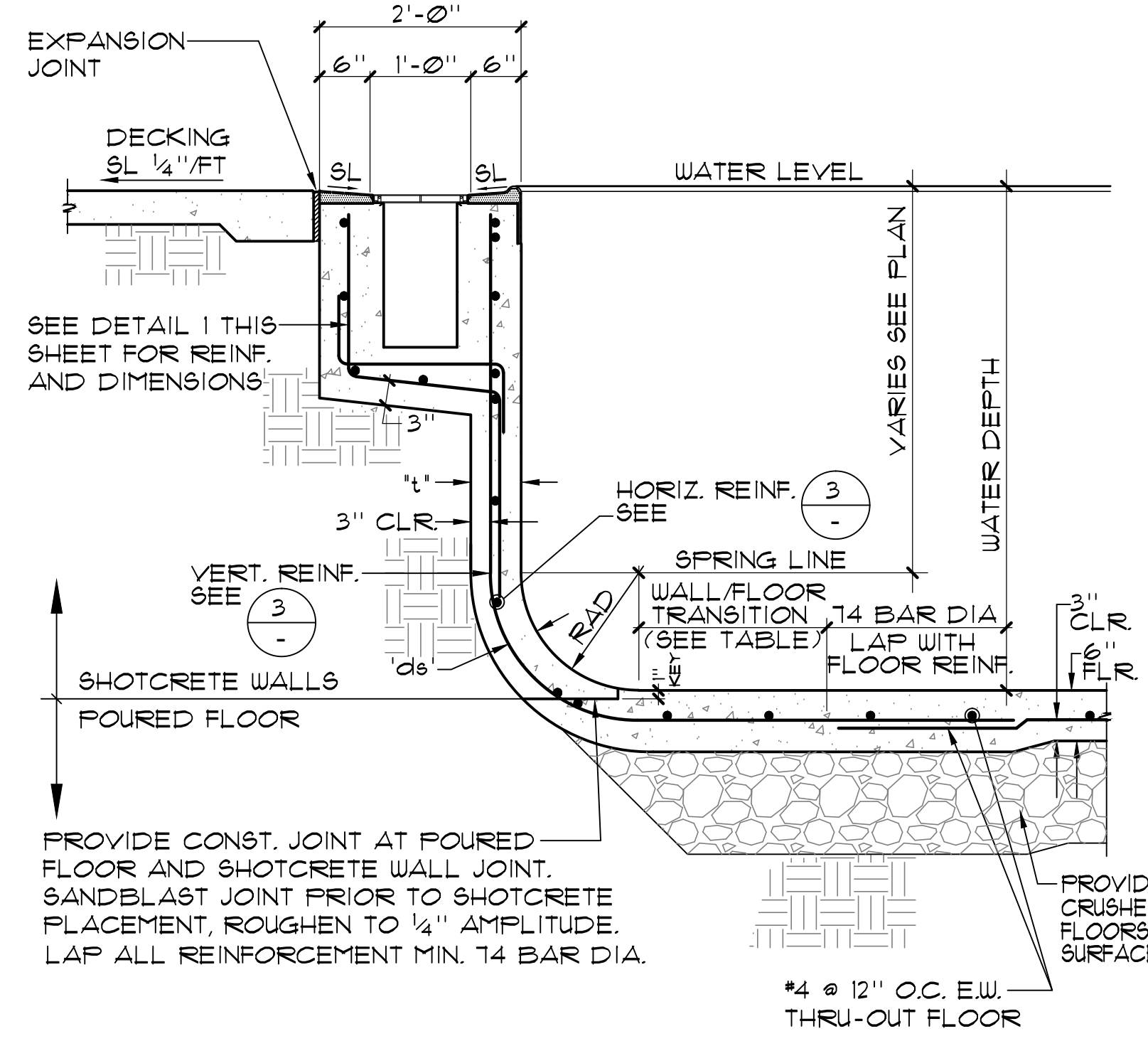


GRATING TO BE GRATE TECHNOLOGIES INC. 1" VINYL, U.V. GRATING W/ NON-SLIP SURFACE AND CHANNEL ANGLE. COLOR TO BE GRAY



\*NOTE:  
CHANNEL & ANGLE ASSEMBLY TO BE FABRICATED TO MAINTAIN CONSTANT DISTANCE BETWEEN ANGLES. VERIFY ALL DIMENSIONS PRIOR TO CONST. PROVIDE CORNER SUPPORTS AS REQUIRED TO MITER GRATING AT CHANGES IN DIRECTION.

1 TYPICAL GUTTER DETAIL 1" = 1'-0"



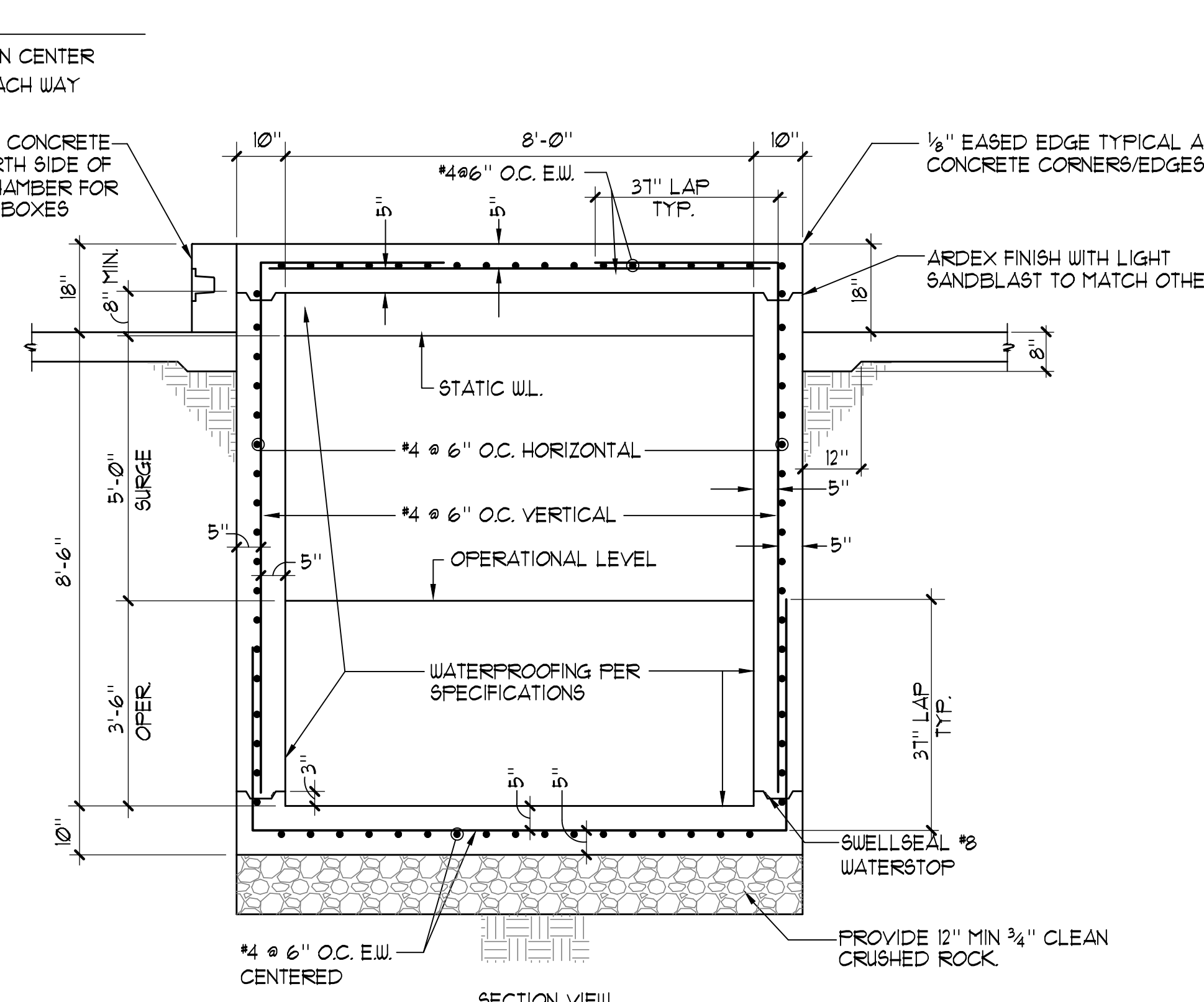
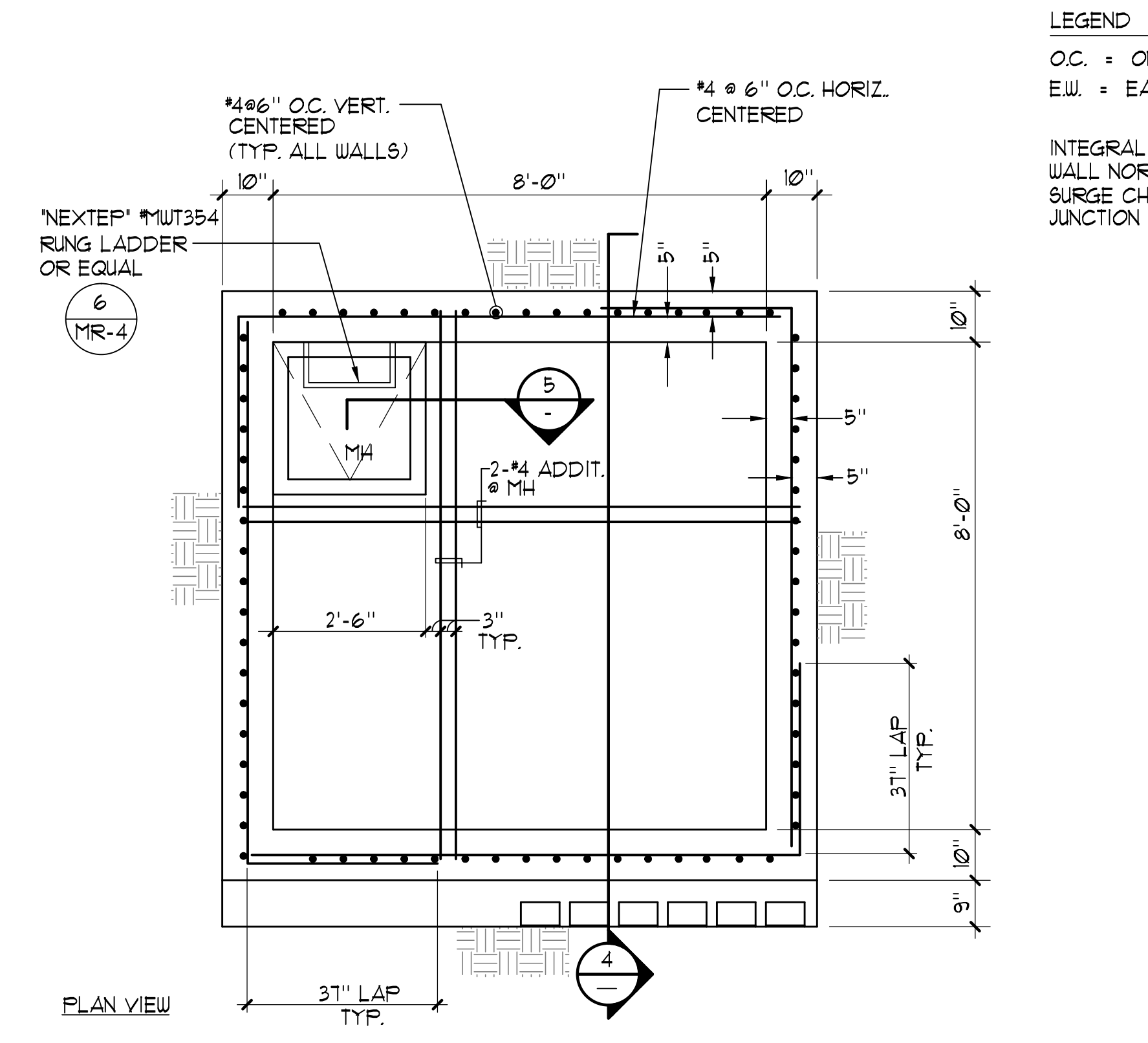
2 POOL WALL 3'-6" TO 5'-0" 3/4" = 1'-0"

REINFORCEMENT TABLE

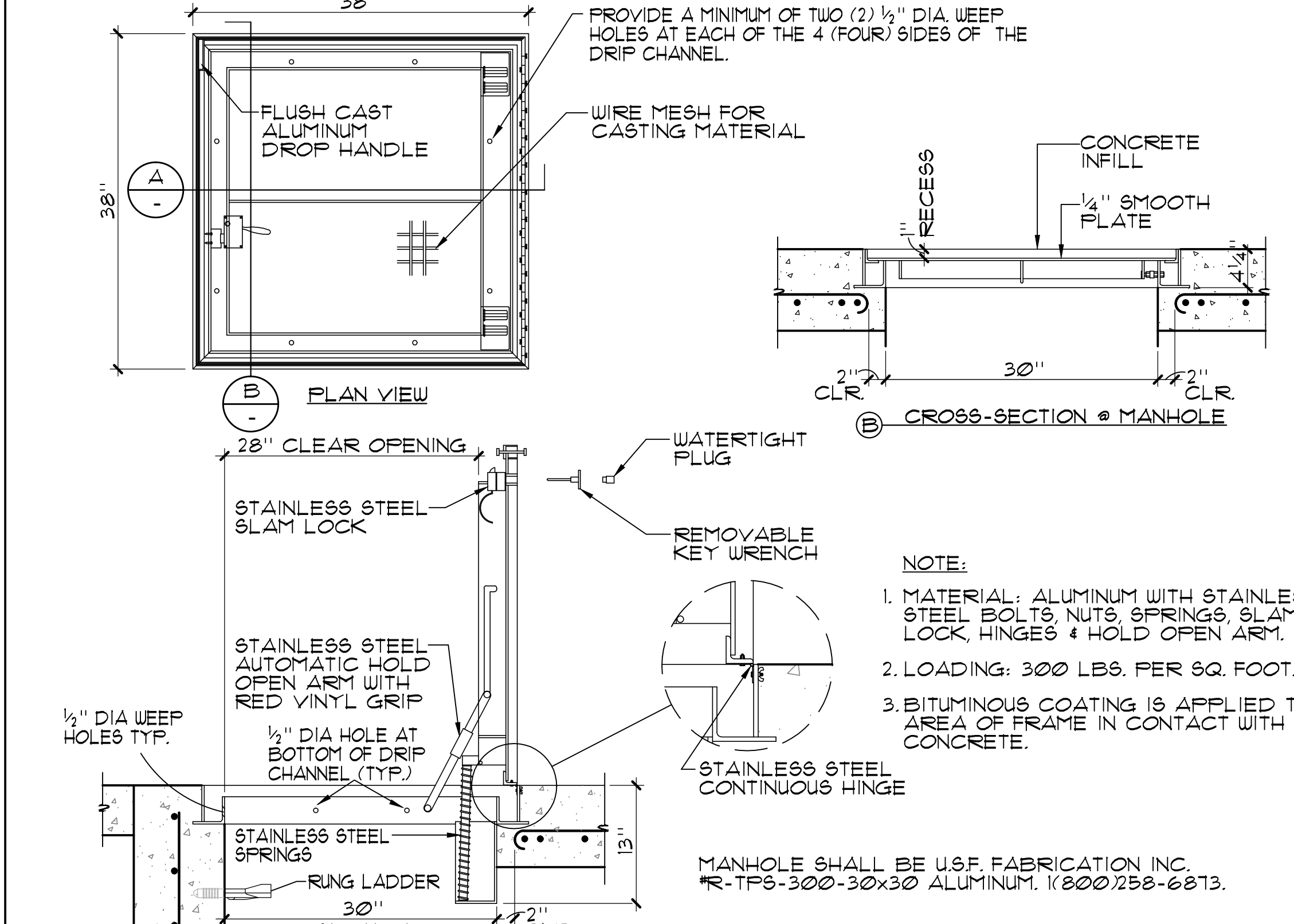
WATER DEPTH	L' d'	RADIUS	VERTICAL REINF.	HORIZONTAL REINF.	TRANSITION TO FLOOR REINF. BEYOND END RADIUS
3'-6" TO 5'-0"	6" 3"	6" TO 10"	#4 @ 8" O.C.	#4 @ 12" O.C.	24"

- CONCRETE NOTES:**
- THE MINIMUM ULTIMATE COMPRESSIVE STRENGTH AT 28 DAYS POOL = 3000 PSI SLAB-ON-GRADE = 3000 PSI MAX. WATER TO CEMENT RATIO = 0.55
  - CONTINUOUS INSPECTION BY AN D.S.A. APPROVED INSPECTOR IS REQUIRED OF ALL CONCRETE PLACEMENT.
  - ALL CEMENT USED SHALL CONFORM TO A.S.T.M. C-150.
  - FINE AND COARSE AGGREGATE SHALL CONFORM TO A.S.T.M. C-33. MAXIMUM SIZE OF AGGREGATE TO BE 1".
  - CONCRETE MIX DESIGNS SHALL BE BASED UPON METHOD B. OF CBC SECTION 1905A2.3.
  - CONCRETE SHALL BE TESTED AND INSPECTED PER SECTION 1932A, T24, PART II, CCR.
  - REMOVAL OF FORMS SHALL COMPLY WITH CBC SECTION 1906A2.1.
  - ALL REINFORCING SHALL BE A.S.T.M. A-615, GRADE 60 UNLESS OTHERWISE NOTED TO BE GRADE 40. MIN. LAPS SHALL BE 14 BAR DIA.
- SHOTCRETE NOTES:**
- THE MINIMUM ULTIMATE COMPRESSIVE STRENGTH AT 28 DAYS POOL WALLS = 3000 PSI
  - CONTINUOUS INSPECTION BY AN D.S.A. APPROVED INSPECTOR IS REQUIRED OF ALL CONCRETE PLACEMENT.
  - ALL CEMENT USED SHALL CONFORM TO A.S.T.M. C-150.
  - FINE AND COARSE AGGREGATE SHALL CONFORM TO A.S.T.M. C-33. MAXIMUM SIZE OF AGGREGATE TO BE 3/8".
  - SHOTCRETE MIX DESIGNS SHALL BE PER CBC SECTION 1932A.2.
  - SHOTCRETE SHALL BE TESTED AND INSPECTED PER SECTION 1932A5 AND 1932A10.
  - ANCHOR BOLTS, ANCHORS, DOVELS, INSERTS, ETC. SHALL BE SECURELY TIED IN PLACE PRIOR TO PLACING OF SHOTCRETE.
  - ALL REINFORCEMENT WITHIN SHOTCRETE SHALL MAINTAIN MINIMUM 2" CLEAR NON-CONTACT SPACES.
  - THE FILM OF LANTANCE WHICH FORMS ON THE SURFACE OF THE SHOTCRETE SHALL BE REMOVED WITHIN APPROXIMATELY TWO HOURS AFTER APPLICATION BY BRUSHING WITH A STIFF BROOM. IF THIS IS NOT REMOVED WITHIN TWO HOURS, IT SHALL BE REMOVED BY THOROUGH WIRE BRUSHING OR SAND BLASTING. CONSTRUCTION JOINTS OVER EIGHT HOURS OLD SHALL BE THOROUGHLY CLEANED WITH AIR AND WATER PRIOR TO RECEIVING SHOTCRETE.
  - ALL REINFORCING SHALL BE A.S.T.M. A-615, GRADE 60 UNLESS OTHERWISE NOTED TO BE GRADE 40. MIN. LAPS SHALL BE 14 BAR DIA.

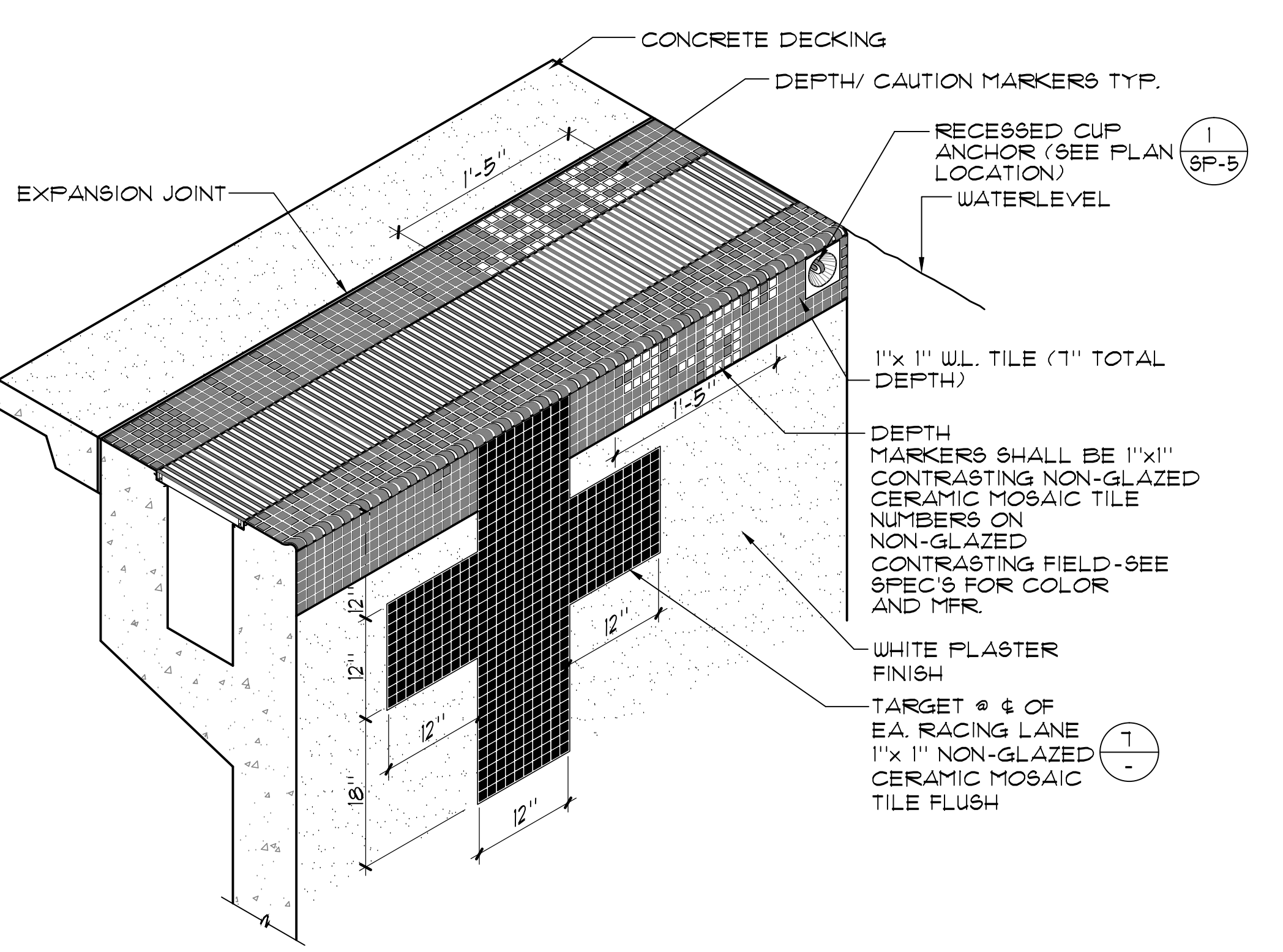
3 REINFORCEMENT TABLE



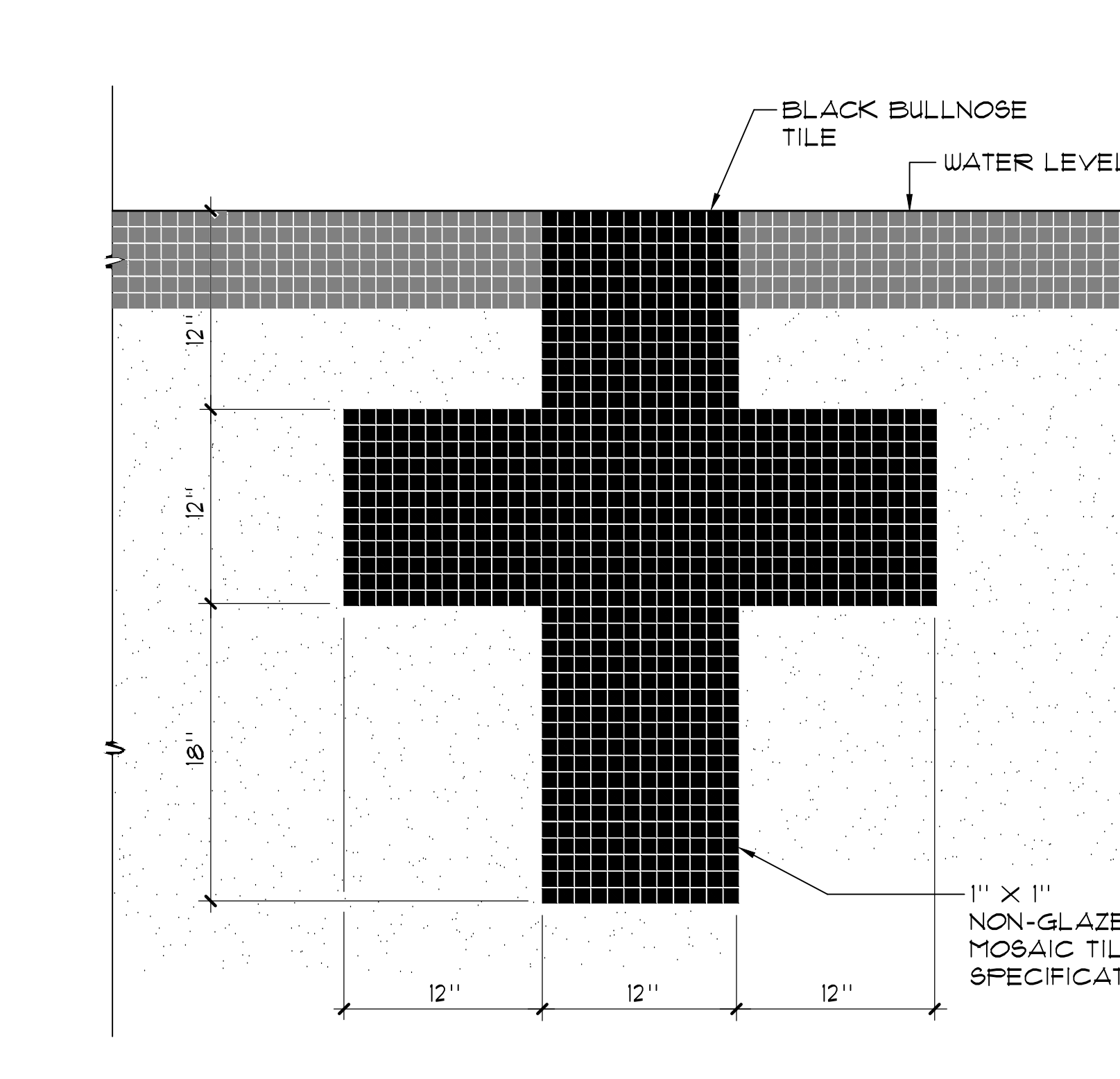
4 SURGE CHAMBER 1/2" = 1'-0"



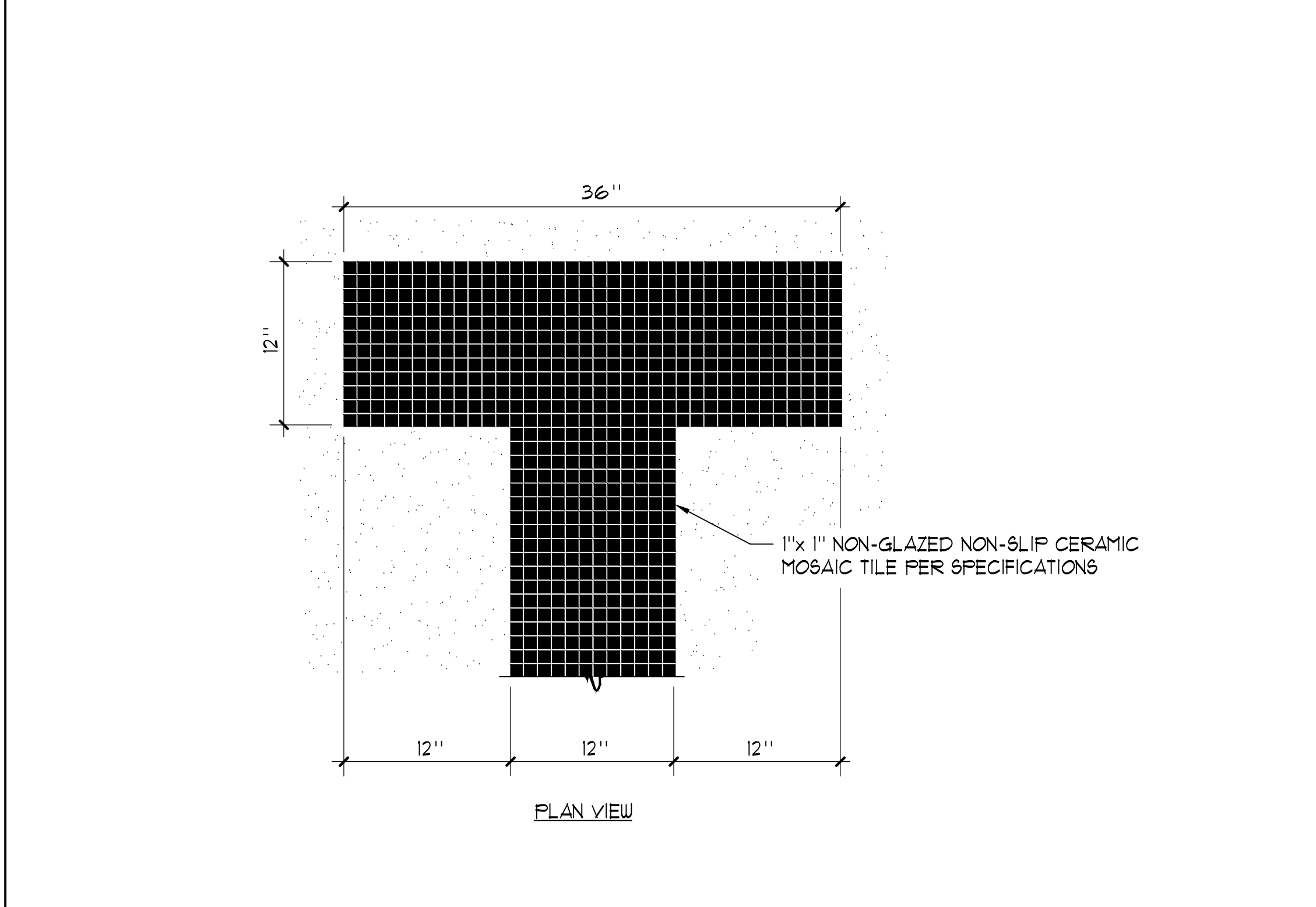
5 SURGE CHAMBER MANHOLE 1" = 1'-0"



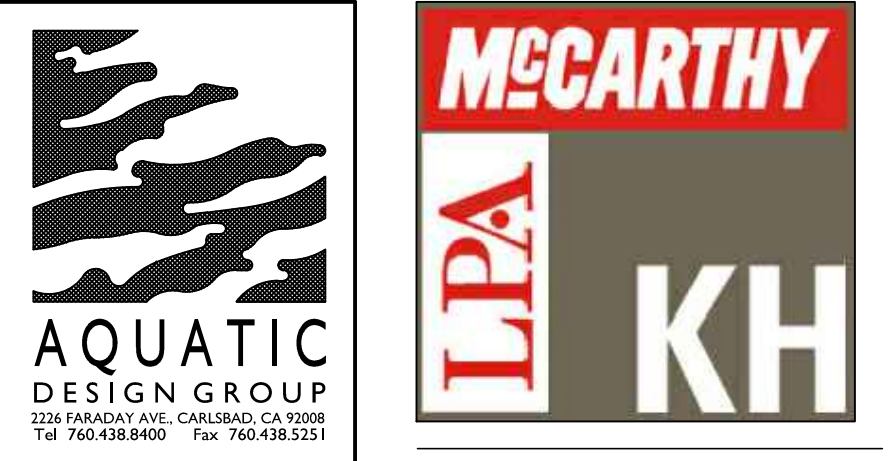
6 RIM FLOW GUTTER PERSPECTIVE NO SCALE



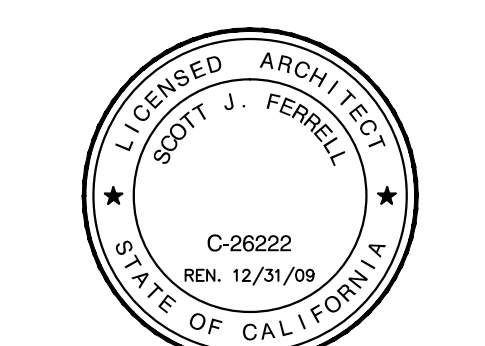
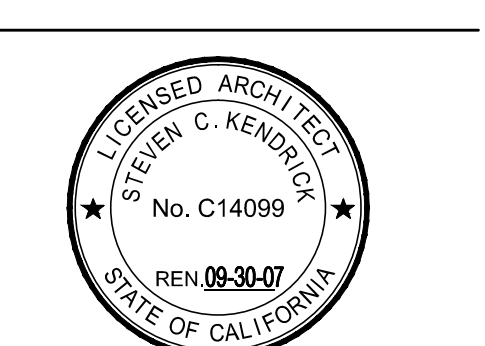
7 END WALL TARGETS 1/2" = 1'-0"



8 RACING LANE LINE 1/2" = 1'-0"



McCarthy Building Companies, Inc.  
343 Sansome Street, 14th Floor  
San Francisco, California 94104  
P 415 364-1339  
F 415 397-5999



IDENTIFICATION STAMP  
DIV. OF THE STATE ARCHITECT  
OFFICE OF REGULATION SERVICE  
APPL. #: 01-110097  
AC: \_\_\_\_\_ FLS: \_\_\_\_\_ SS: \_\_\_\_\_  
DATE: \_\_\_\_\_  
FILE NUMBER: 41-C1

This and all other project documents are the property of U.S.F. Inc. U.S.F. Inc. does not warrant the accuracy of any information contained herein. U.S.F. Inc. does not warrant the accuracy of any information contained herein. U.S.F. Inc. does not warrant the accuracy of any information contained herein. U.S.F. Inc. does not warrant the accuracy of any information contained herein.

College of San Mateo  
Site Package  
San Mateo, CA  
Developed for  
San Mateo County Community College District

Revision	Description	Date
19	SUBMITTAL	09 APRIL 2009
20	FINAL	09 APRIL 2009
21	PROJECT RECORD DRAWING	JUNE 2011

Job No. 27082.30  
Date 09 APRIL 2009  
Drawn by NFC  
Checked by S.J.F.  
Scale AS NOTED

DETAILS  
SP-3