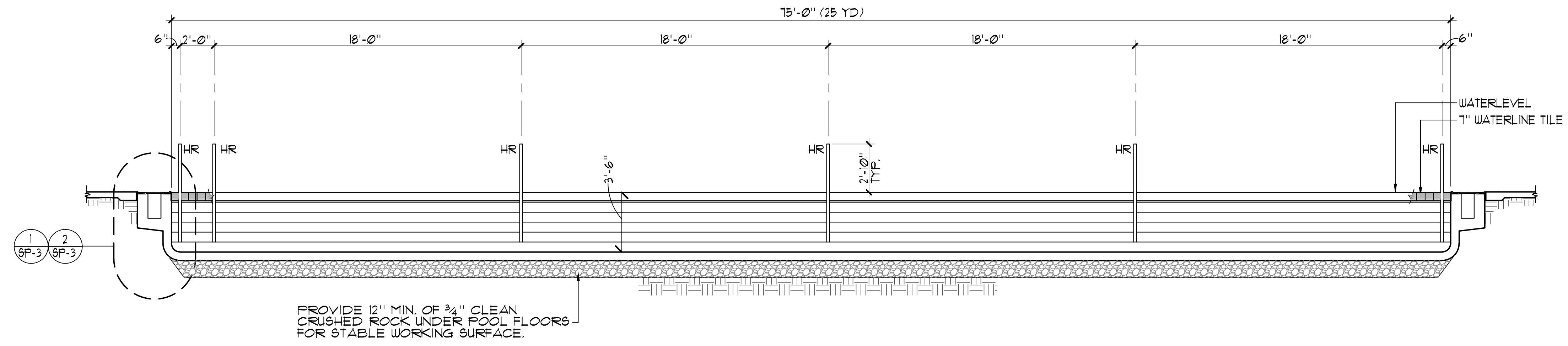


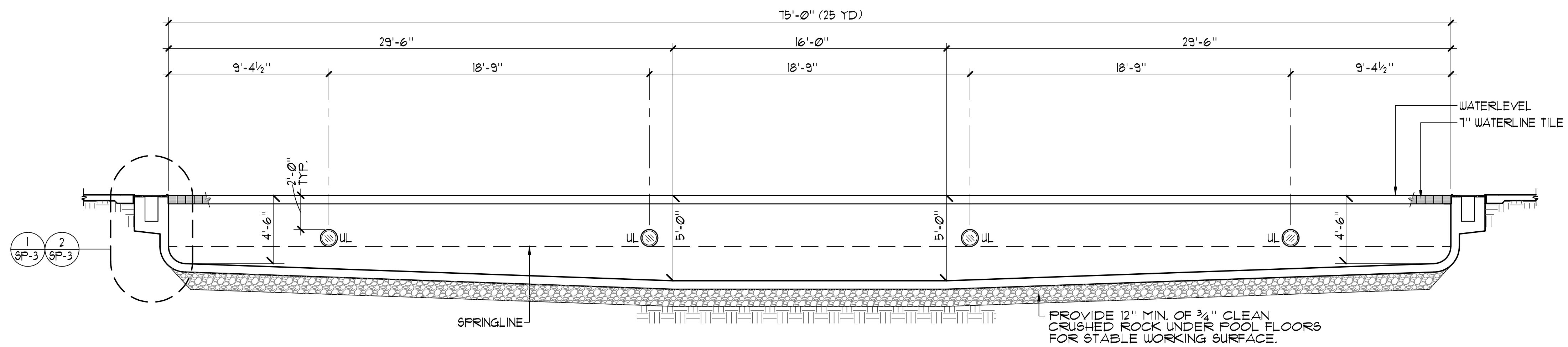
IDENTIFICATION STAMP
DIV. OF THE STATE ARCHITECT
OFFICE OF REGULATION SERVICE
APPL. #: 01-110097
AC: _____ FLS: _____ SS: _____
DATE: _____
FILE NUMBER: 41-C1

This and all other project documents and all their contents, methods and design measurements herein are the property of LPA, KH, LPA and KH and cannot be used or reproduced in whole or in part for any project or purpose except as described in the intellectual property agreement between LPA and KH. LPA hereby grants limited access to this project document to KH, and KH hereby grants limited access to this project document to LPA, and neither LPA nor KH shall be held liable for any use of this project document for any purpose other than that intended by LPA and KH. Consultants to the maximum legal extent agree to indemnify, defend and hold LPA and KH harmless from any and all claims, damages, costs or expenses, directly or indirectly, from project document misuse.
Project documents describe design intent of work and are not a representation of as-built or existing conditions. LPA and KH Consultants make no representation concerning the accuracy of documents and are not responsible for any discrepancies between project documents and the existing conditions.
© Copyright 2008



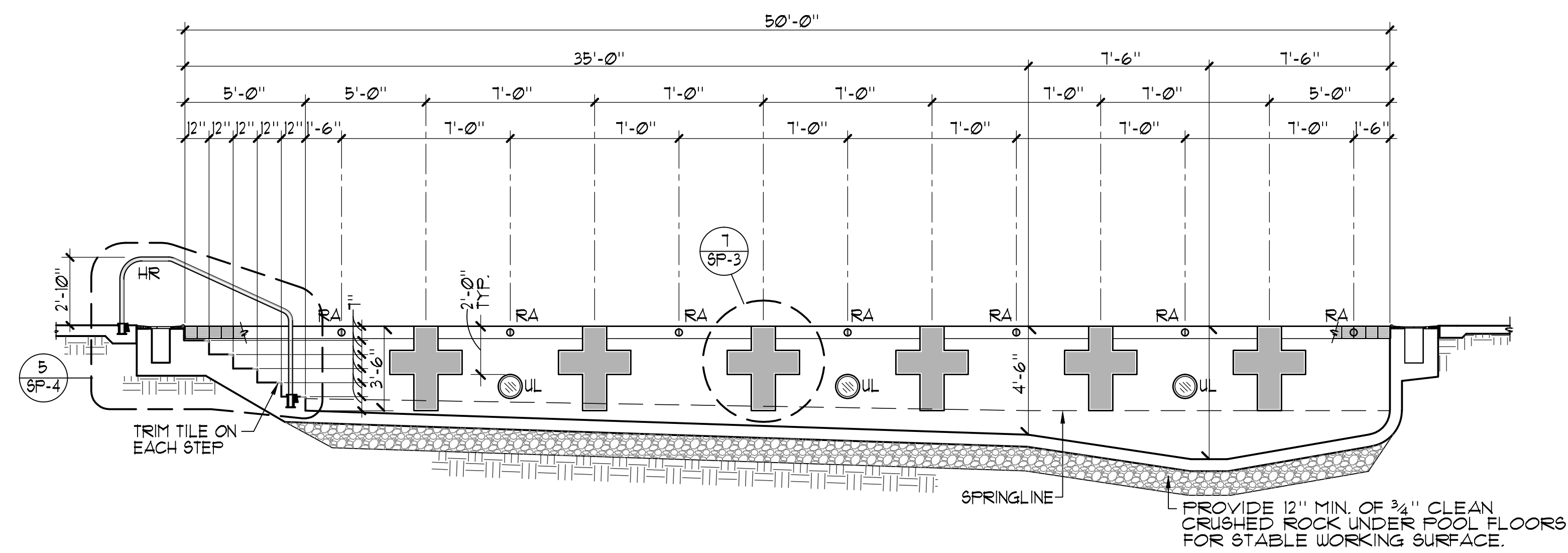
SWIMMING POOL SECTION

1/4"=1'-0"



SWIMMING POOL SECTION

1/4"=1'-0"



SWIMMING POOL SECTION

1/4"=1'-0"

College of San Mateo
Site Package
San Mateo, CA
Developed for
San Mateo County Community College District

Revision	Description	Date

Revision	Description	Date
1	DSA SUBMITTAL	19 SEPT 2008
2	DSA FINAL	09 APRIL 2009
3	PROJECT RECORD DRAWING	JUNE 2011

Job No.	27082.30
Date	09 APRIL 2009
Drawn by	NFC
Checked by	SJF
Scale	1/4"=1'-0"

SWIMMING POOL SECTIONS

SP-2