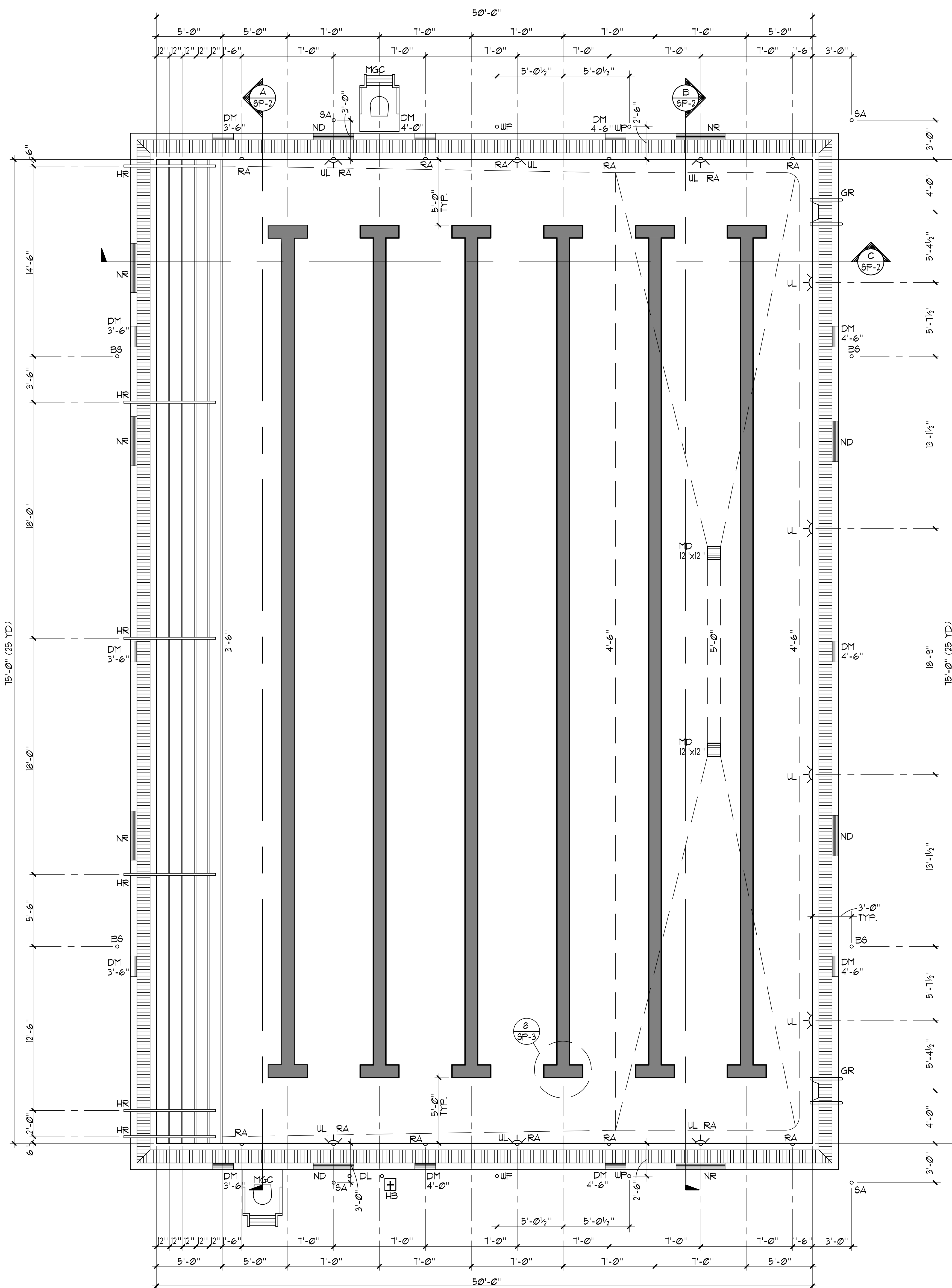


This and all other project documents are the property of McCarthy Building Companies, Inc. (LPA) and cannot be copied, reproduced, or transmitted in any form or by any means, electronic or mechanical, including photocopying, recording, or by any information storage and retrieval system, without the prior written permission of McCarthy Building Companies, Inc. (LPA). LPA hereby grants to the Client (LPA) a limited license to use the project documents for the project only and for the purpose of construction. LPA and LPA Consultants make no representation concerning the accuracy of documents and are not responsible for any discrepancies between project documents and the existing conditions.

© Copyright 2008

College of San Mateo  
 Site Package  
 San Mateo, CA

Developed for  
 San Mateo County Community College District



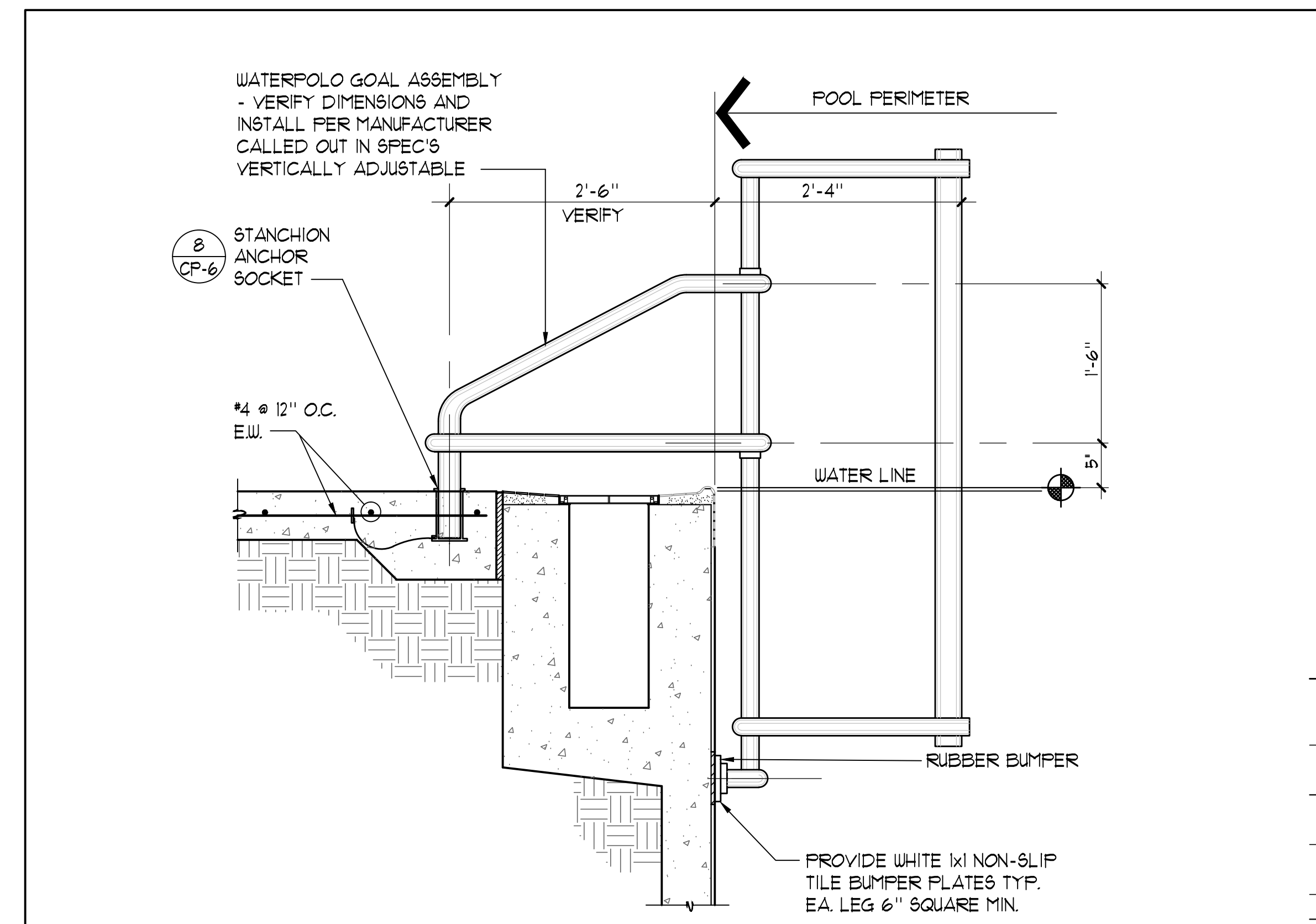
**SWIMMING POOL DATA**

SURFACE AREA	=	3,754 SQ. FT.
PERIMETER	=	250 FT.
DEPTH	=	3'-6" TO 5'-0"
VOLUME	=	112,349 GAL.
6 HR TURNOVER	=	312 GPM

**LEGEND**

- MD = MAIN DRAIN
- GR = GRABRAIL
- DM = DEPTH MARKER
- NR = NO RUNNING
- ND = NO DIVING
- RA = ROPE ANCHOR
- MGC = MOVEABLE GUARD CHAIR
- BS = BACKSTROKE STANCHION
- UL = UNDERWATER LIGHT
- DL = DISABLED LIFT
- HB = HOSE BIBB
- HR = HANDRAIL
- UP = WATERPOLO
- SA = STANCHION ANCHOR

REVISIONS: ADDED 4 W/P ANCHORS  
 ADDED 4 SA



Revision	Description	Date
1	DSA SUBMITTAL	19 SEPT 2008
2	DSA FINAL	09 APRIL 2009
3	COWNER REVISIONS	11 SEPT 2009
4	PROJECT RECORD DRAWING	JUNE 2011

Job No.	27082.30
Date	09 APRIL 2009
Drawn by	NFC
Checked by	SJF
Scale	1/4"=1'-0"

SWIMMING POOL LAYOUT PLAN
---------------------------