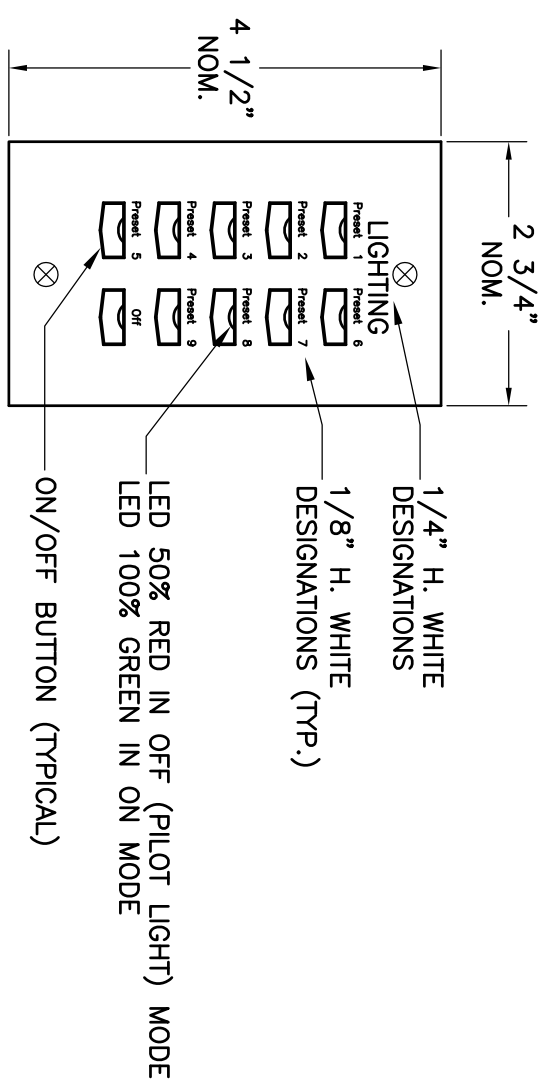


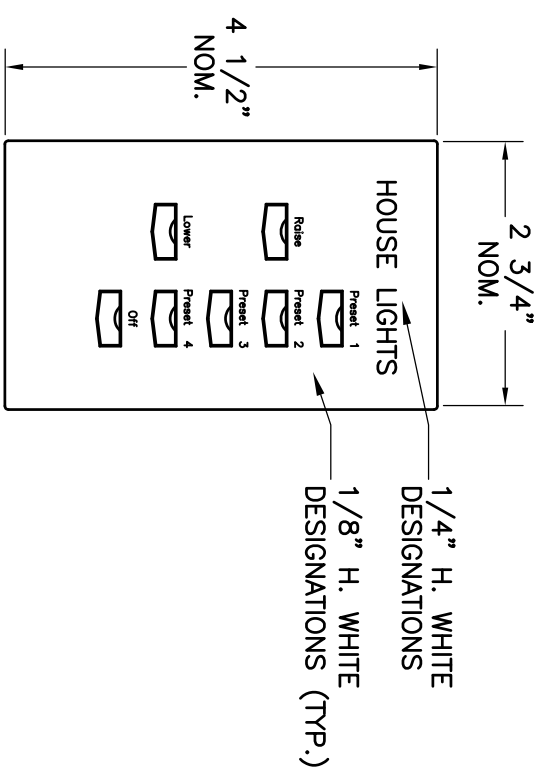
STEEL OR ALUMINUM FACEPLATE W/BLACK SEMI-GLOSS FINISH AND WHITE DESIGNATIONS. FACE PLATE REMOVABLE FOR ACCESS.
MOUNT ON EXISTING SINGLE-GANG BACK BOX

4 HOUSELIGHT KEYSWITCH STATION "HLK"
6'-1'-0"



STEEL OR ALUMINUM FACEPLATE W/BLACK SEMI-GLOSS FINISH AND WHITE DESIGNATIONS. FACE PLATE REMOVABLE FOR ACCESS.
MOUNT ON EXISTING SINGLE GANG BACK BOX.

3 SNAPSHOT STATION "S"
6'-1'-0"



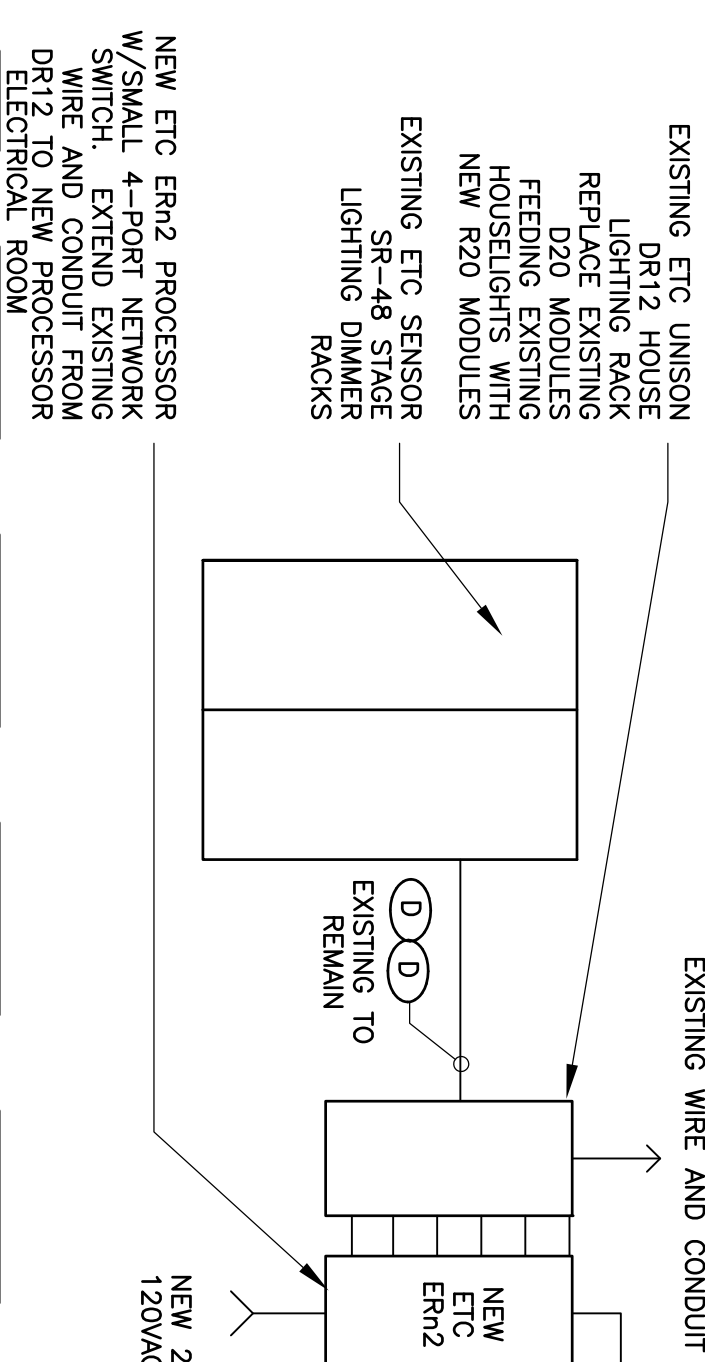
STEEL OR ALUMINUM FACEPLATE W/BLACK SEMI-GLOSS FINISH AND WHITE DESIGNATIONS. FACE PLATE REMOVABLE FOR ACCESS.
MOUNT ON EXISTING SINGLE-GANG BACK BOX.

2 HOUSE LIGHT STATION "HL"
6'-1'-0"

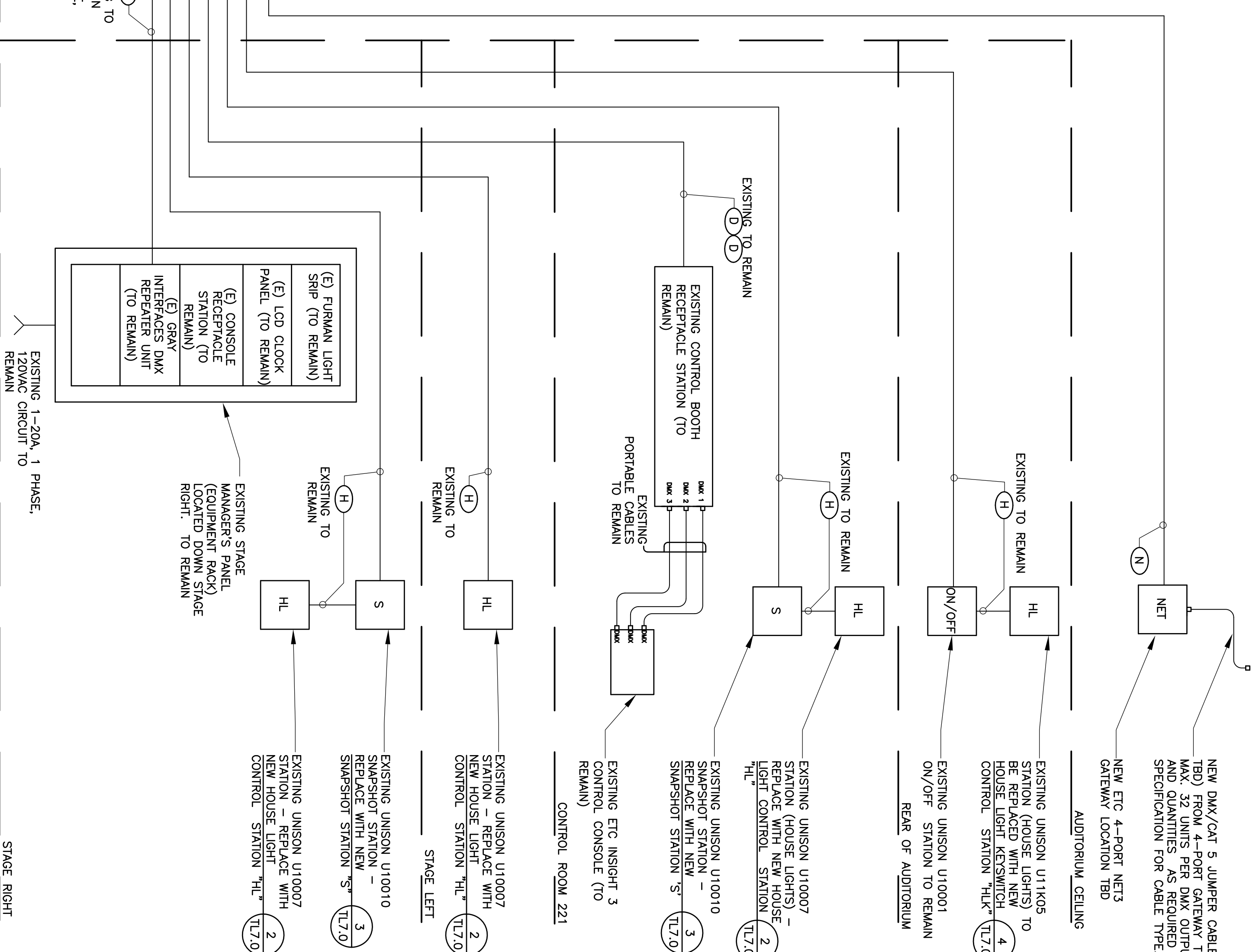
SCHEDULE OF SIGNAL AND CONTROL CONDUCTORS

Cond. Group	Wire Count	Cable Type (or equal)	Conductor Use(s)
(D)	2PR#24	(1) Balcan 9729	DMX (EXISTING - REUSE)
(H)	1PR#16 1#14	(1) Balcan 8471 THHN	UNISON STATIONS (EXISTING - REUSE)
(N) X#	4PR#24	(1) Balcan 1583A	NETWORK (NEW)

= Number of type in conduit



1 THEATRE SYSTEM SIGNAL AND CONTROL RISER DIAGRAM
NTB NOTES: 1. ALL NEW SIGNAL & CONTROL CONDUIT TO BE 3/4\"/>



NEW DMX/CAT 5 JUMPER CABLES (TYPICAL OF QUANTITY TBD) FROM 4-PORT GATEWAY TO TYPE A & B FIXTURES. MAX. 32 UNITS PER DMX OUTPUT. PROVIDE CABLE LENGTHS AND QUANTITIES AS REQUIRED BY FIELD CONDITIONS. SEE SPECIFICATION FOR CABLE TYPE.

NEW ETC 4-PORT NET3 GATEWAY CEILING

AUDITORIUM CEILING

EXISTING UNISON U110005 STATION (HOUSE LIGHTS) TO BE REPLACED WITH NEW HOUSE LIGHT KEYSWITCH CONTROL STATION 'HLK' TL7.0

EXISTING UNISON U110001 ON/OFF STATION TO REMAIN REAR OF AUDITORIUM

EXISTING UNISON U10007 STATION (HOUSE LIGHTS) LIGHT CONTROL STATION 'HL' TL7.0

EXISTING UNISON U10007 STATION - REPLACE WITH NEW HOUSE LIGHT CONTROL STATION 'HL' TL7.0

EXISTING UNISON U10010 SNAPSHOT STATION 'S' TL7.0

EXISTING ETC INSIGHT 3 CONTROL CONSOLE (TO REMAIN)

CONTROL ROOM 221

EXISTING TO REMAIN

EXISTING TO REMAIN

EXISTING TO REMAIN

EXISTING TO REMAIN

EXISTING TO REMAIN

EXISTING TO REMAIN

EXISTING TO REMAIN

EXISTING TO REMAIN

EXISTING TO REMAIN

EXISTING TO REMAIN

EXISTING TO REMAIN

EXISTING TO REMAIN

EXISTING TO REMAIN

EXISTING TO REMAIN

EXISTING TO REMAIN

EXISTING TO REMAIN

EXISTING TO REMAIN

EXISTING TO REMAIN

EXISTING TO REMAIN

EXISTING TO REMAIN

EXISTING TO REMAIN

EXISTING TO REMAIN

EXISTING TO REMAIN

EXISTING TO REMAIN

EXISTING TO REMAIN

EXISTING TO REMAIN

EXISTING TO REMAIN

EXISTING TO REMAIN

EXISTING TO REMAIN

EXISTING TO REMAIN

EXISTING TO REMAIN

EXISTING TO REMAIN

EXISTING TO REMAIN

EXISTING TO REMAIN

EXISTING TO REMAIN

EXISTING TO REMAIN

EXISTING TO REMAIN

EXISTING TO REMAIN

EXISTING TO REMAIN

REVISIONS

SAN MATEO COUNTY COMMUNITY COLLEGE DISTRICT
CAÑADA/COLLEGE OF SAN MATEO
THEATER HOUSE LIGHTING RETROFIT
COLLEGE OF SAN MATEO - BUILDING 3
1700 WEST HILLSDALE BLVD., SAN MATEO, CA 94402

LANDRY & BOGAN
THEATRE CONSULTANTS
733 W. Evelyn Ave. Mountain View, CA 94041
(650) 969-5195 Fax 969-4965
heather@landb.com

SCALE: AS NOTED
DATE: September 16, 2014
SHEET TITLE
THEATER HOUSE
LIGHTING RETROFIT
RISER DIAGRAM
+ DETAILS
TL7.0