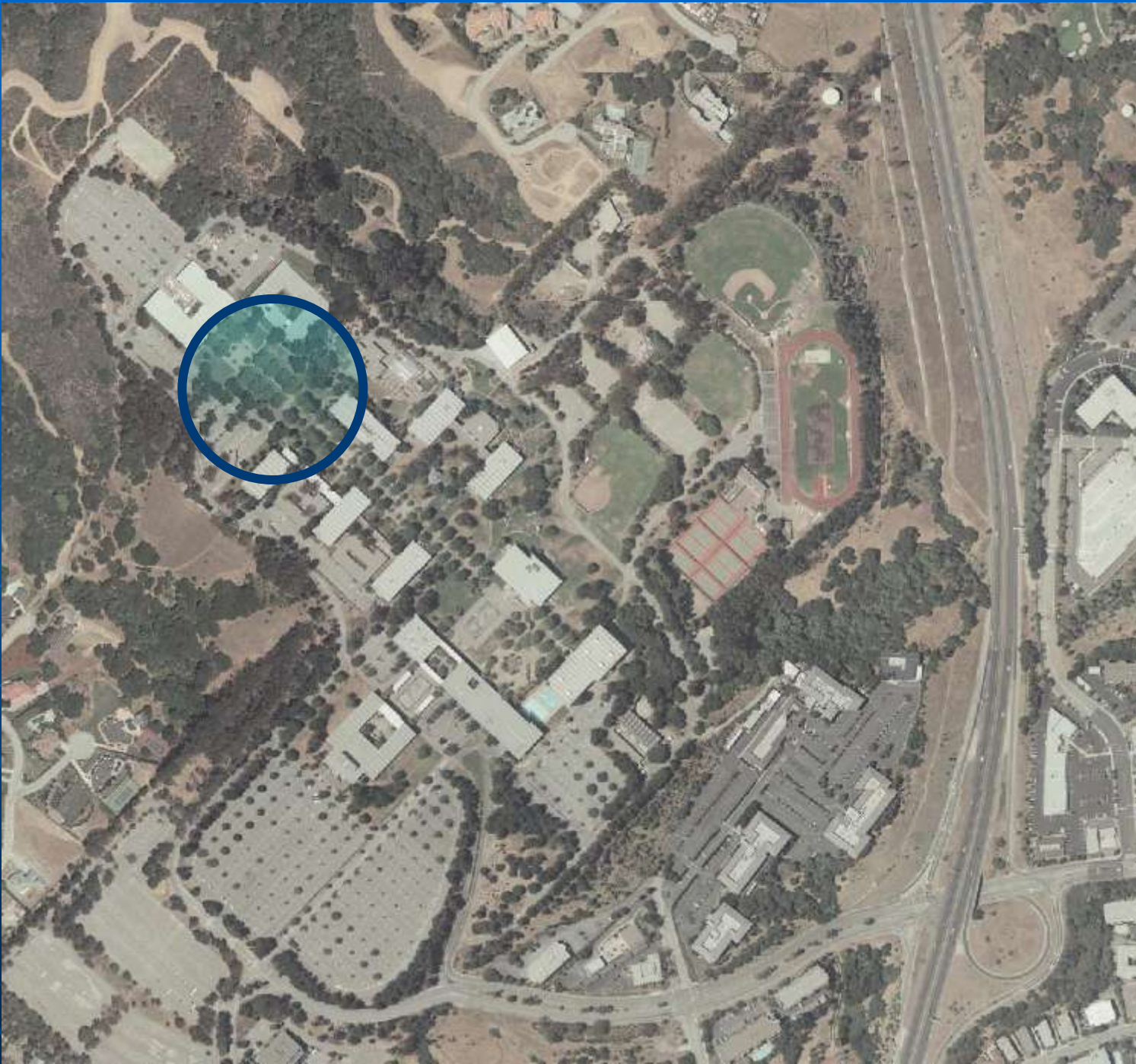


# INTEGRATED SCIENCE CENTER

COLLEGE OF SAN MATEO





# Budget and Schedule

TOTAL PROJECT BUDGET:

\$ 22.6 Million

PROJECT SCHEDULE:

- ARCHITECT SELECTION February 2002
- PROGRAMMING August 2002
- SCHEMATIC DESIGN June 2003
- DESIGN/BUILD PRE-QUALIFICATION September 2003
- BRIDGING DOCUMENTS October 2003
- DESIGN/BUILD PROPOSALS December 2003
- DESIGN/BUILD COMMENCES January 2004
- GROUNDBREAKING Summer 2004
- BUILDING OCCUPANCY January 2006

# KEY USER GROUP PARTICIPANTS

- ISC DEPARTMENT OFFICE  
Robert Kowerski – Dean Math/Science
- ASTRONOMY, PHYSICS, AND EARTH SCIENCES  
Barbara Uchida – Physics  
Linda Hand – Geology, Earth Science  
Darryl Stanford – Astronomy/Physics  
Mohsen Janatpour- Astronomy/Physics
- BIOLOGICAL SCIENCES  
Kathy Diamond – Biology
- CHEMISTRY  
Kate Deline – Chemistry
- EXTERIOR DESIGN REVIEW COMMITTEE
- CSM ADMINISTRATION
- FACILITIES / INFORMATION TECHNOLOGY SERVICES

# PROGRAM OF SPACES

(ASSIGNABLE SQUARE FEET)

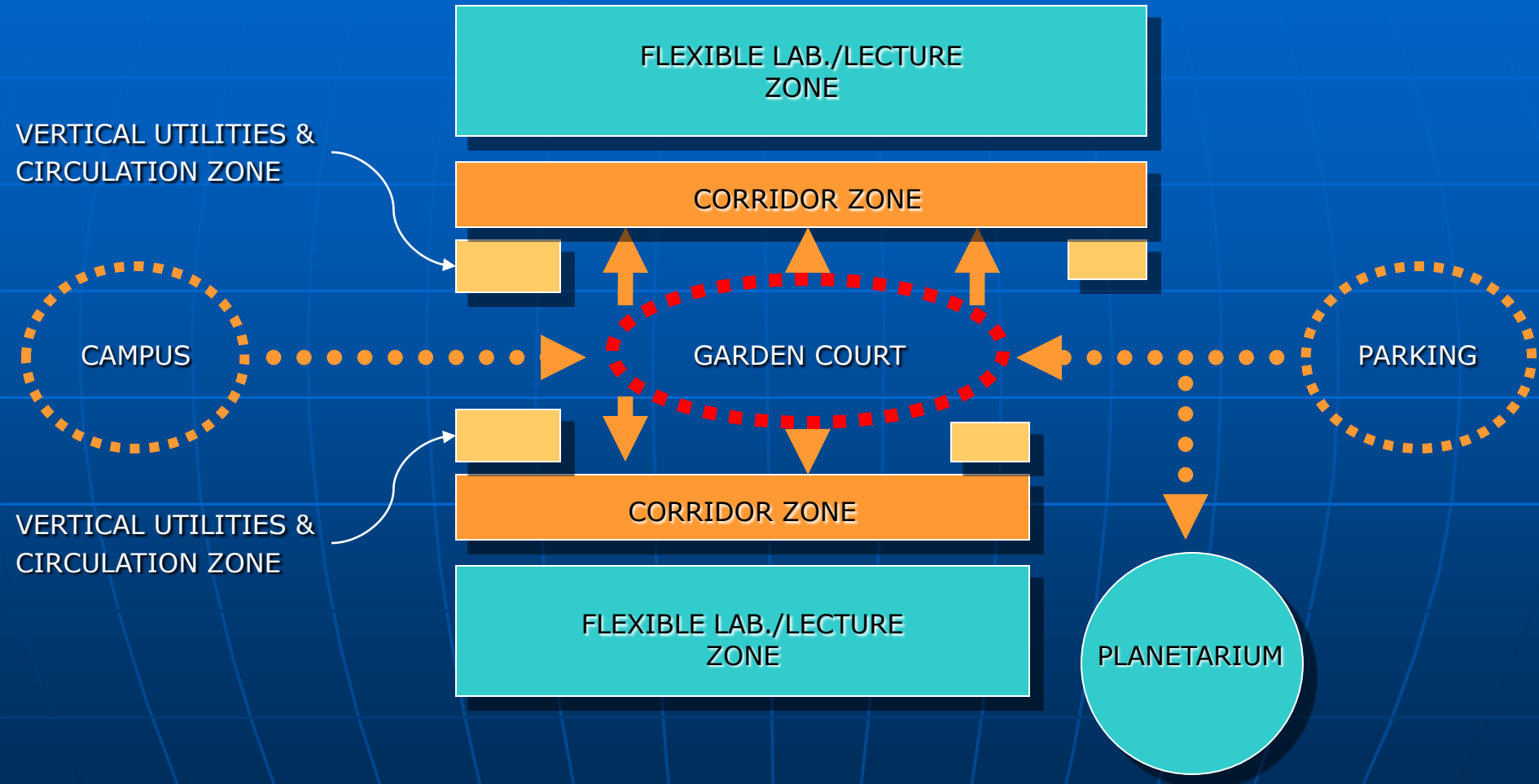
■ CLUSTER A – ASTRONOMY, PHYSICS, AND EARTH SCIENCES	11,316
■ CLUSTER B – BIOLOGICAL SCIENCES	8,649
■ CLUSTER C – CHEMISTRY	8,568
■ CLUSTER D – ISC DEPARTMENT OFFICE	840
■ CLUSTER E – LECTURE	4,800
■ CLUSTER F – RESOURCE CENTER	1,680
■ CLUSTER G – HAZARDOUS MATERIALS STORAGE	300

---

TOTAL ASSIGNABLE SQUARE FEET	36,153
------------------------------	--------

TOTAL GROSS SQUARE FEET	55,000
-------------------------	--------

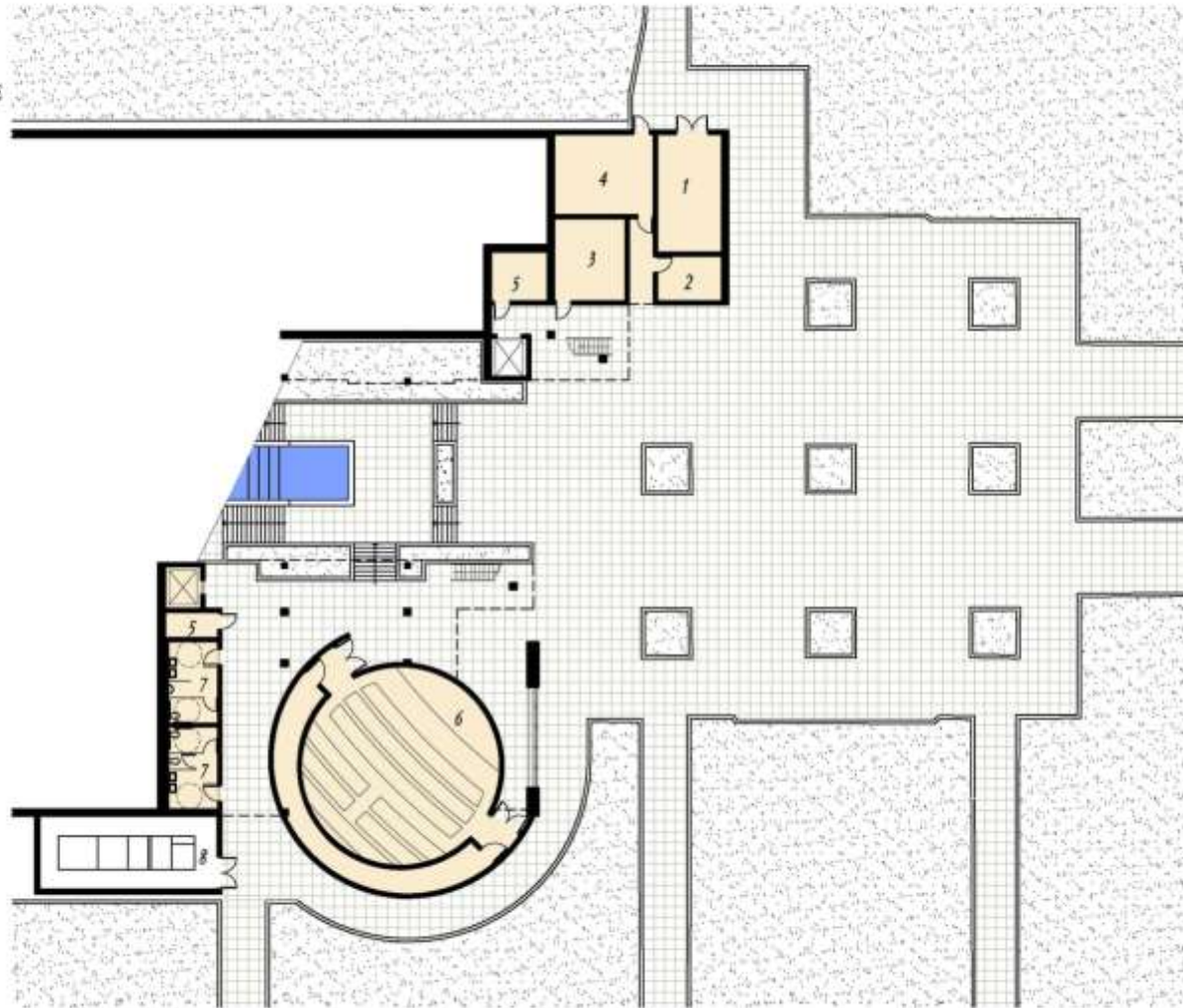
# DESIGN CONCEPT





VIEW FROM ABOVE

- 1. MECHANICAL ROOM
- 2. JANITOR
- 3. ELECTRICAL/DATA
- 4. HAZARDOUS MATERIAL STORAGE
- 5. ELEVATOR MACHINE ROOM
- 6. PLANETARIUM
- 7. REST ROOM
- 8. MECHANICAL UNITS



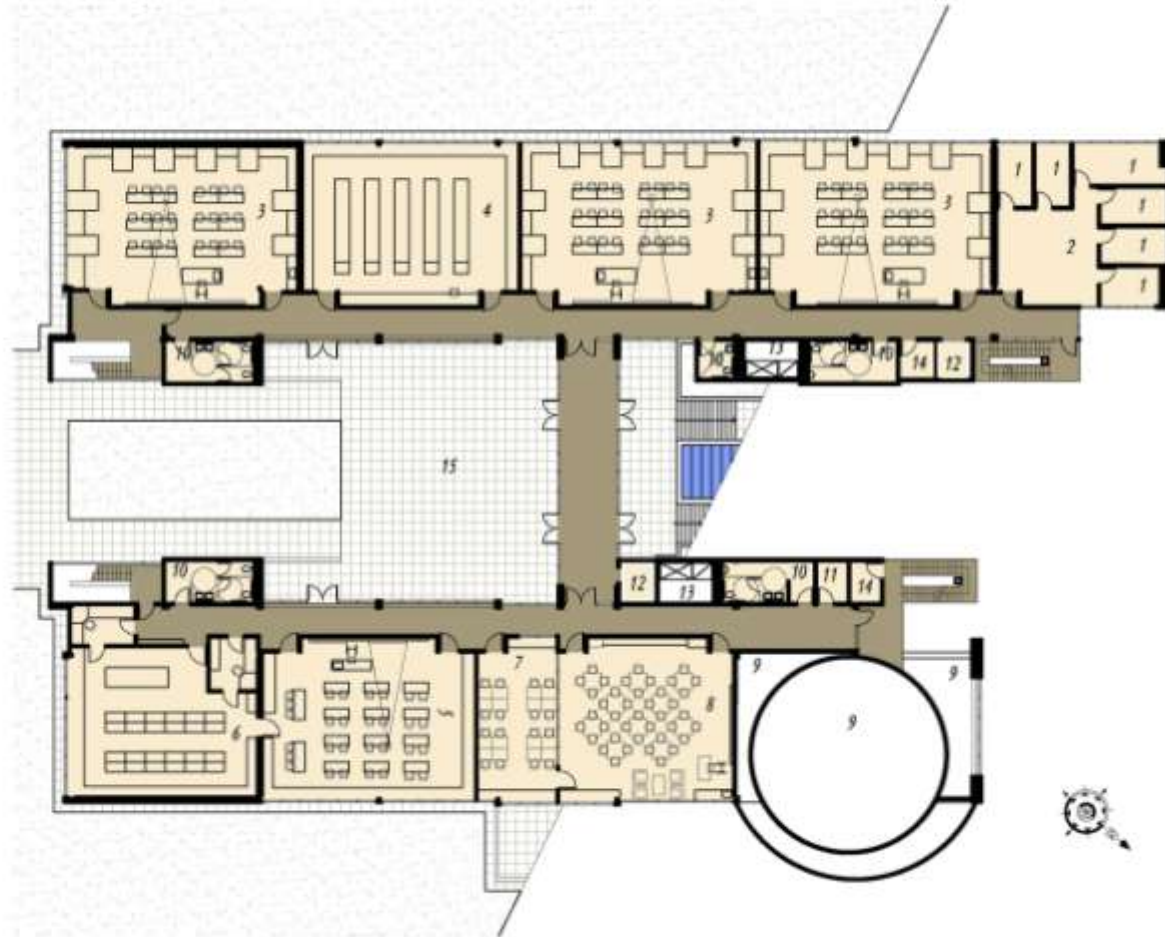
GROUND FLOOR PLAN

0 30' 60'

GROUND FLOOR PLAN



1. OFFICE
2. WAITING AREA
3. PHYSICS LECTURE/LAB
4. PHYSICS PREP. ROOM
5. EARTH SCIENCE LECTURE/LAB
6. EARTH SCIENCE PREP. ROOM
7. COMPUTER CENTER
8. RESOURCE CENTER
9. OPEN TO BELOW
10. TOILET
11. JANITOR
12. ELEVATOR
13. MECHANICAL SHAFT
14. DATA/ELECTRICAL CLOSET
15. PLAZA

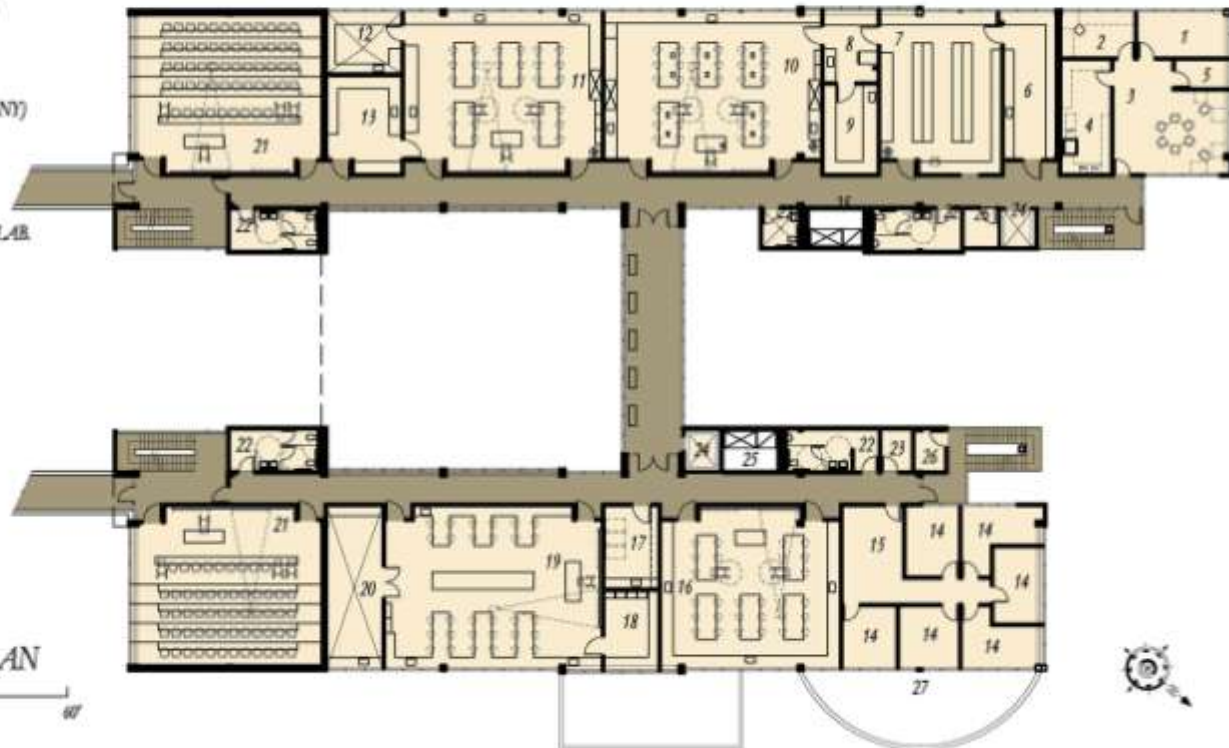


FIRST FLOOR PLAN



FIRST FLOOR PLAN

- 1. DEAN
- 2. STAFF ASSISTANT
- 3. STAFF SUPPORT
- 4. MAIL ROOM
- 5. SUPPLY
- 6. CHEMICAL STORAGE
- 7. GEN. BIOLOGY PREP. ROOM
- 8. AUTOCLAVE
- 9. MEDIA
- 10. MICROBIOLOGY LAB.
- 11. GEN. BIOLOGY LAB (BOTANY)
- 12. BIOLOGY PREP. ROOM
- 13. BIOTECHN. CELL ROOM
- 14. OFFICE
- 15. WAITING AREA
- 16. GEN. BIOLOGY (ZOOLOGY) LAB.
- 17. ZOOLOGY PREP. ROOM
- 18. ANATOMY PREP. ROOM
- 19. ANATOMY LAB.
- 20. CADAVER
- 21. LECTURE ROOM
- 22. TOILET
- 23. JANITOR
- 24. ELEVATOR
- 25. MECHANICAL SHAFT
- 26. DATA/EL. CLOSET
- 27. ROOF BELOW



SECOND FLOOR PLAN

1. CHEMISTRY INSTRUMENT ROOM
2. CHEMISTRY LECTURE/LAB
3. CHEMISTRY PREP./STOCK ROOM
4. ORGANIC CHEMISTRY LECTURE/LAB
5. LECTURE ROOM
6. OFFICE
7. WAITING AREA
8. TOILET
9. JANITOR
10. ELEVATOR
11. MECHANICAL SHAFT
12. DATA/EL. CLOSET
13. ROOF BELOW
14. ORGANIC CHEMISTRY INSTRUMENT ROOM

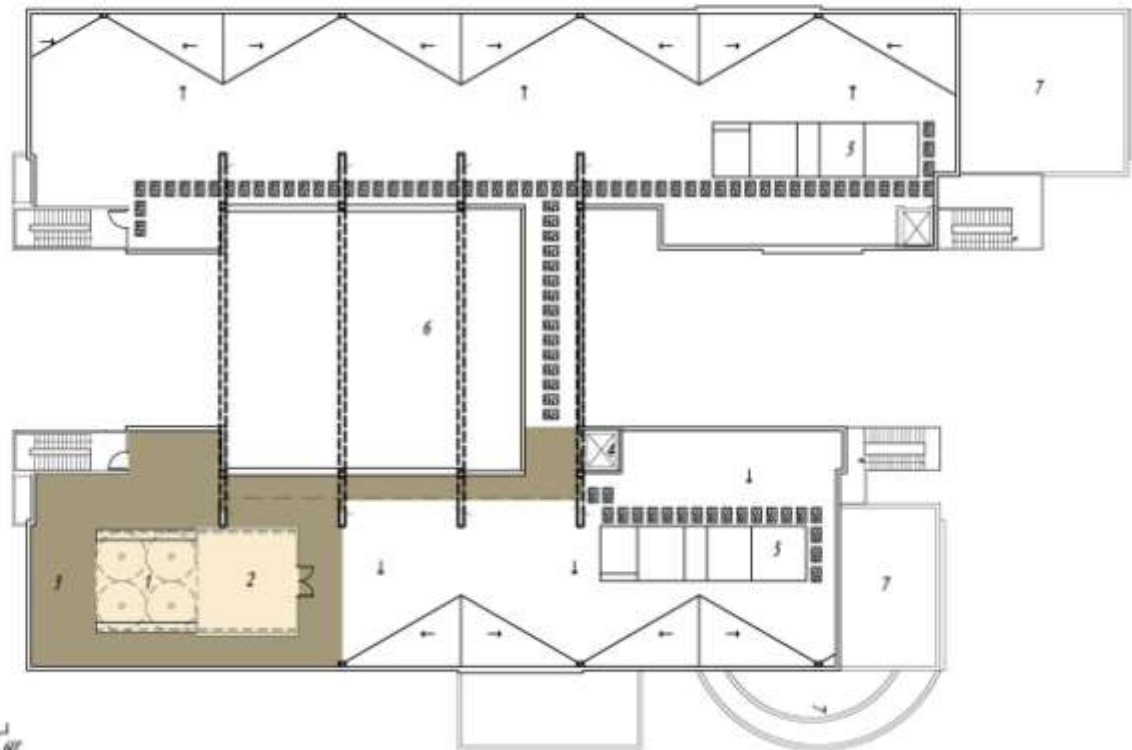


THIRD FLOOR PLAN

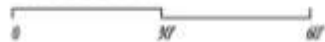
0 30' 60'

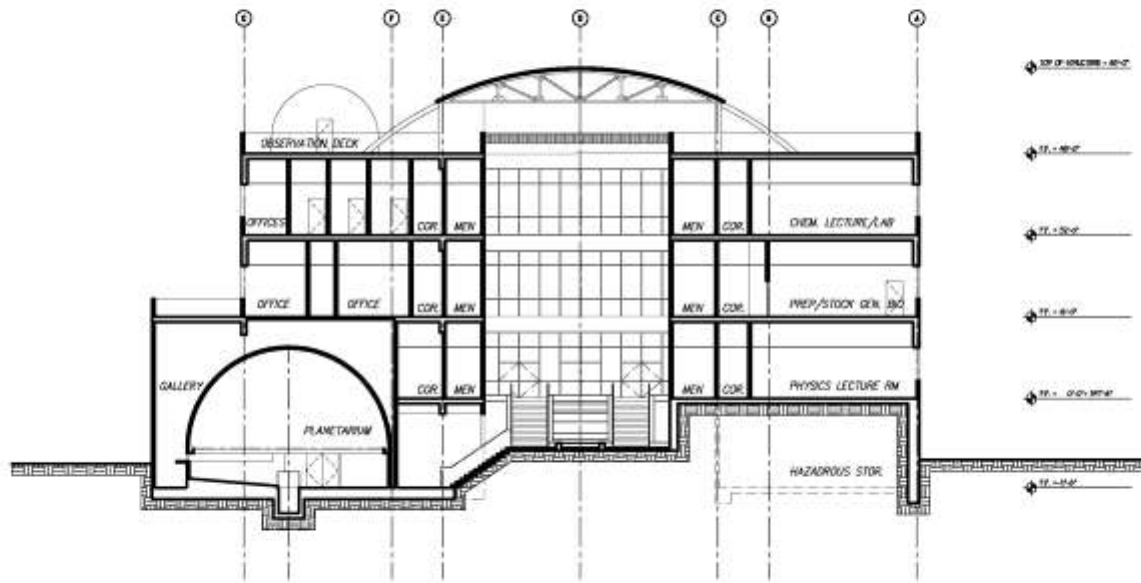
THIRD FLOOR PLAN

- 1. OBSERVATORY
- 2. OBSERVATORY STORAGE
- 3. OBSERVATORY DECK
- 4. ELEVATOR
- 5. MECHANICAL UNIT
- 6. TRANSLUCENT ROOF ABOVE
- 7. ROOF BELOW



ROOF PLAN





SECTION B-B



VIEW FROM NORTH



VIEW FROM SOUTH

# ISC Summary

- Collaborative Effort
- Design/Build Project
- \$22.6M Total Project Cost
- Summer 2004 Groundbreaking
- Questions & Answers