

399 Bradford Street Redwood City, Ca. 94063
Tel: (650) 364-6453
Fax: (650) 364-2618
www.des-ae.com

SIEMENS

Building Technologies, Inc.
Fire Safety Division
SAN FRANCISCO BRANCH
25821 Industrial Boulevard, Suite 300
Hayward, California 94545-2981
Tel (510) 783-6000 Fax (510) 293-2100
California State C10 License No. 758796
U.L. Certificate ID No. 324787-001

ROBERT A. BOTHMAN, INC.

General Engineering and Building Contractors
650 QUINN AVENUE
SAN JOSE, CA. 95112
Ph: (408) 279-2277
Fax: (408) 279-2281

SAN MATEO COUNTY COMMUNITY COLLEGE DISTRICT ATHLETIC FIELDS PHASE 2

COLLEGE OF SAN MATEO
SOFTBALL FIELD TEAM ROOM & FOOTBALL HALL OF FAME
San Mateo, Ca. 94402
1700 W. Hillsdale Blvd.

FIRE ALARM PLAN - SOFTBALL TEAM ROOM & HALL OF FAME

ISSUE:	DATE:	DESCRIPTION:
DSA	04/26/07	DSA SUBMISSION

DRAWN BY: JOVEN MANLUTAC & JERI FABIAN

REVIEWED BY: KELLY ROGERS

APPROVED BY: KELLY ROGERS

SIEMENS JOB NO.: 44OP-022170

IDENTIFICATION STAMP
DIVISION OF THE STATE ARCHITECT
APPL #: 01-108848
FILE #: 41-C1
AC NC FLS SS
DATE: OCT 10 2007

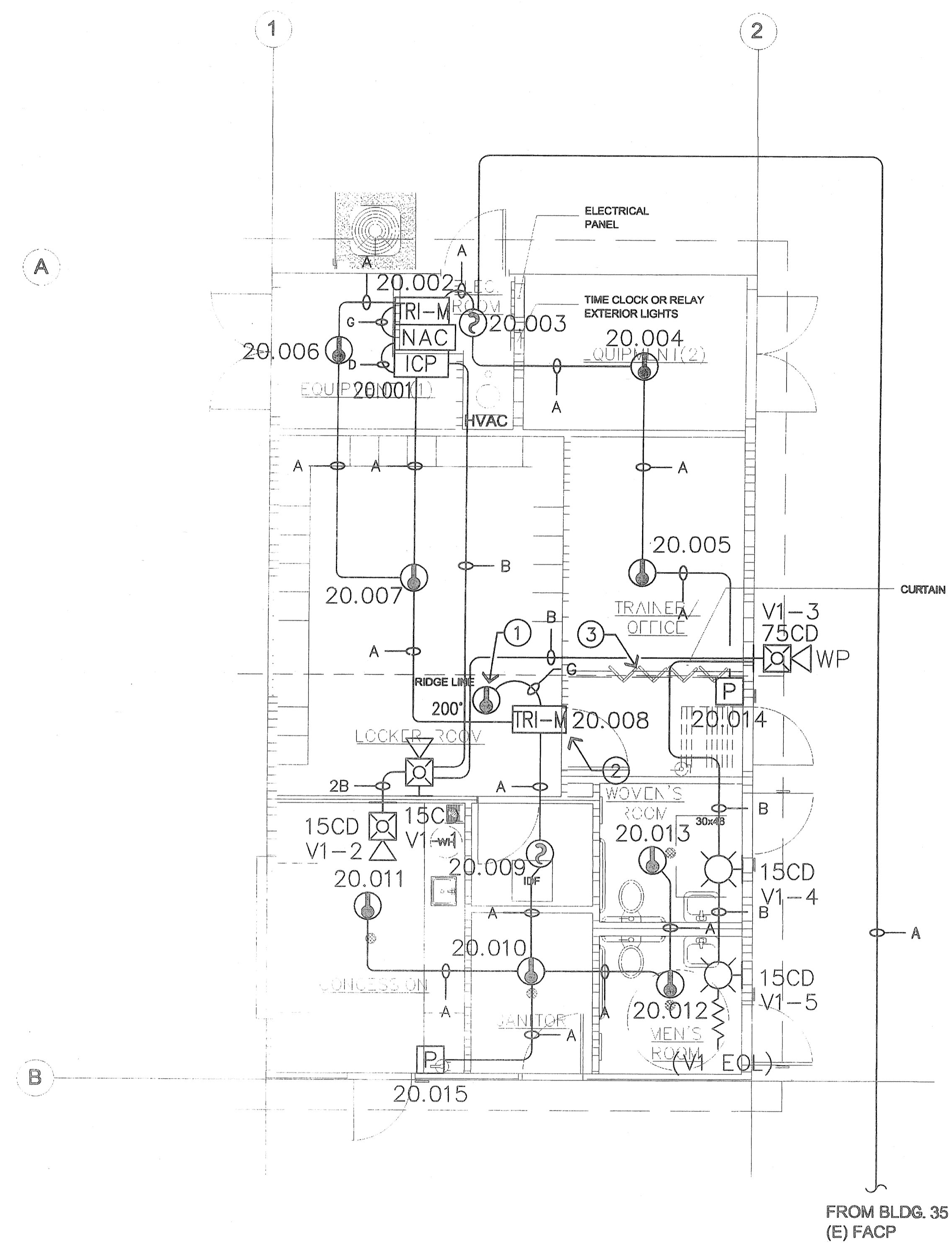


© 2006

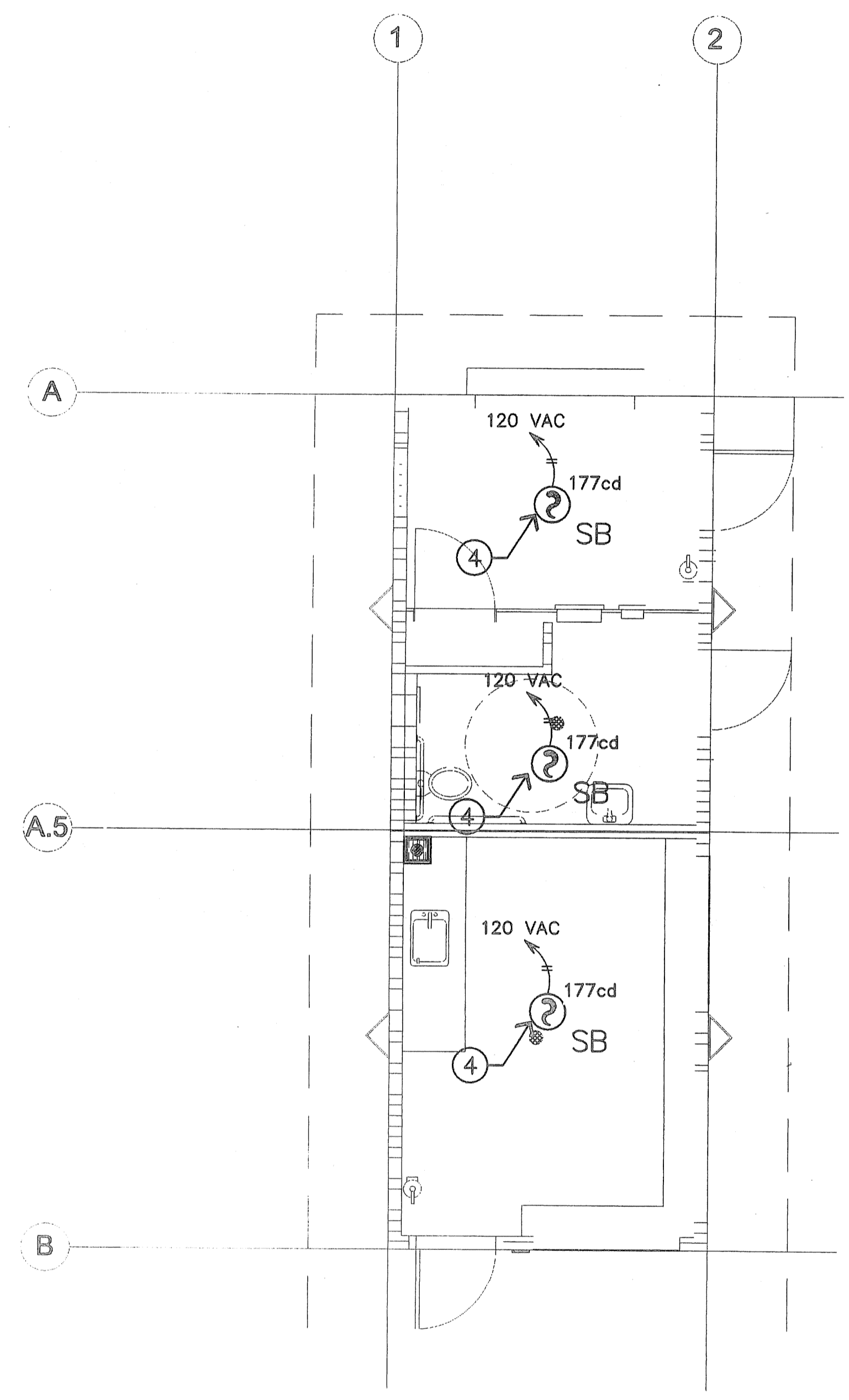
SHEET NO. **FA0.06**

SHEET NOTES:

- ① LOCATE CONVENTIONAL TYPE HEAT DETECTOR ON UNDER SIDE OF THE CEILING JOIST, 3 FEET FROM THE CEILING CROWN.
- ② DO NOT MOUNT TRI DEVICE IN ATTIC SPACE.
- ③ THE CURTAIN IS A CUBICLE PRIVACY CURTAIN, SOFT TYPE, WITH NETTING ABOVE IT AND OPEN 12" AFF AT THE BOTTOM.
- ④ STAND-ALONE FIRE ALARM DEVICE.



FIRE ALARM PLAN - SOFTBALL TEAM ROOM BUILDING
SCALE: 1/4" = 1'-0"



FIRE ALARM PLAN - HALL OF FAME BUILDING
SCALE: 1/4" = 1'-0"

Oct 09, 2007 - 5:39pm mantilatorj K:\PS\Ops\Engineering\California Projects\San Mateo\1700 West Hillsdale Boulevard - CSN\White\Bldg 02 Revised per Engineer's C-440P-022170.dwg