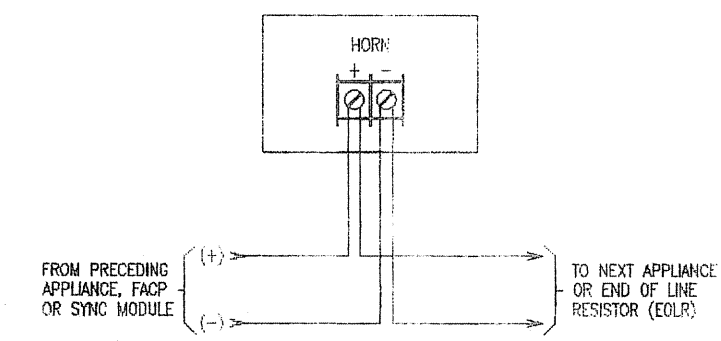
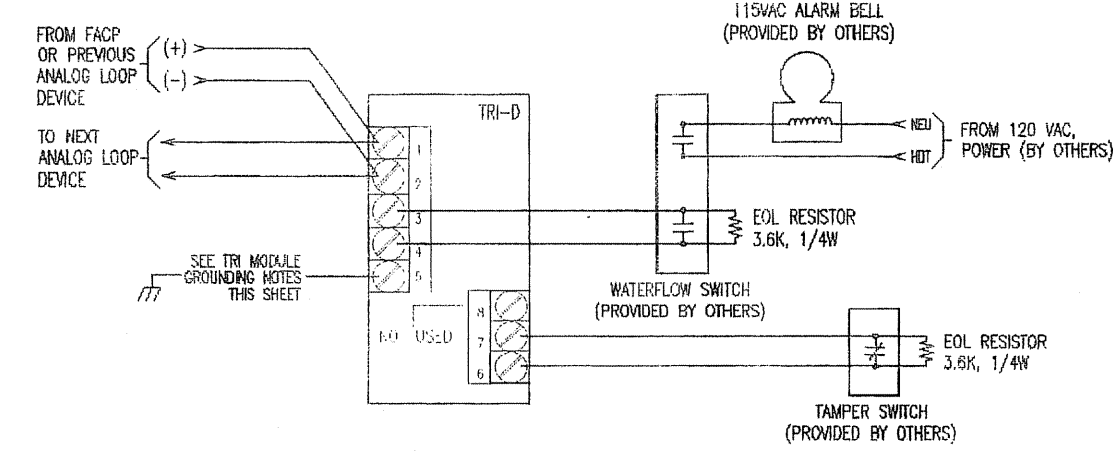


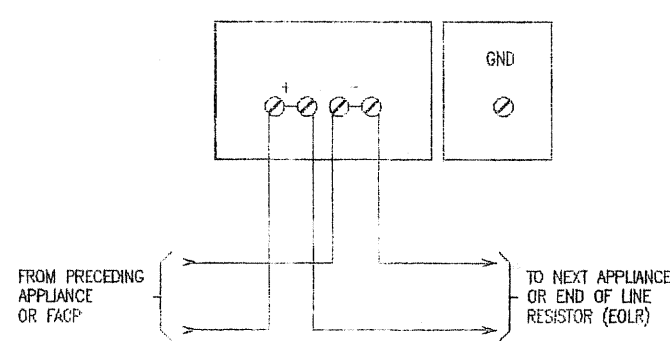
TYPICAL WIRING OF FIELD DEVICES



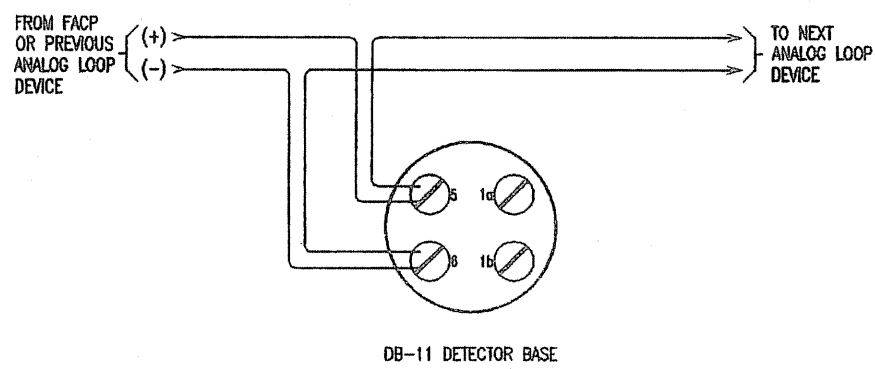
AH-24WP WEATHERPROOF HORN, 24VDC
(Indoor / Outdoor Appliance)



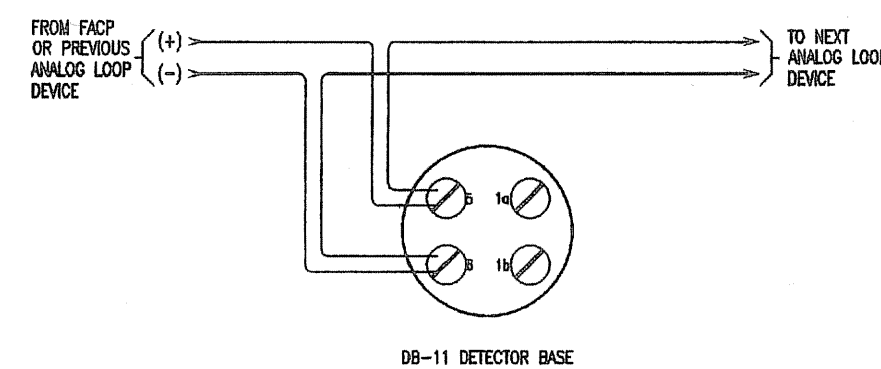
TRI-D INTERFACE MODULE, DUAL INPUT
for WATERFLOW and TAMPER SWITCH SUPERVISION with ALARM BELL
NOTE: WATERFLOW & TAMPER SWITCHES ARE FURNISHED AND INSTALLED BY SPRINKLER CONTRACTOR. COORDINATE WITH THE CONTRACTOR FOR FURTHER DEVICE DETAILS.



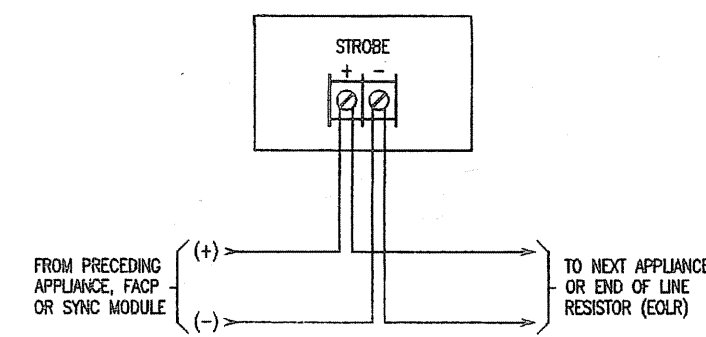
43T-G10-115R BELL, 24VDC



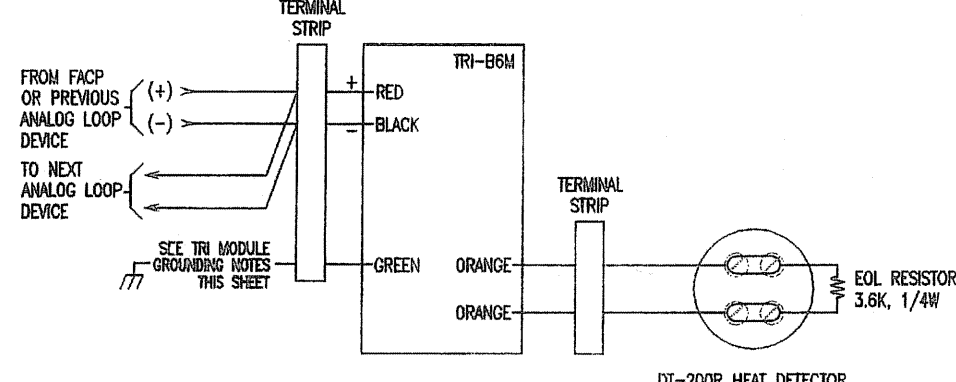
FPT-11 INTELLIGENT THERMAL DETECTOR
with DB-11 DETECTOR BASE



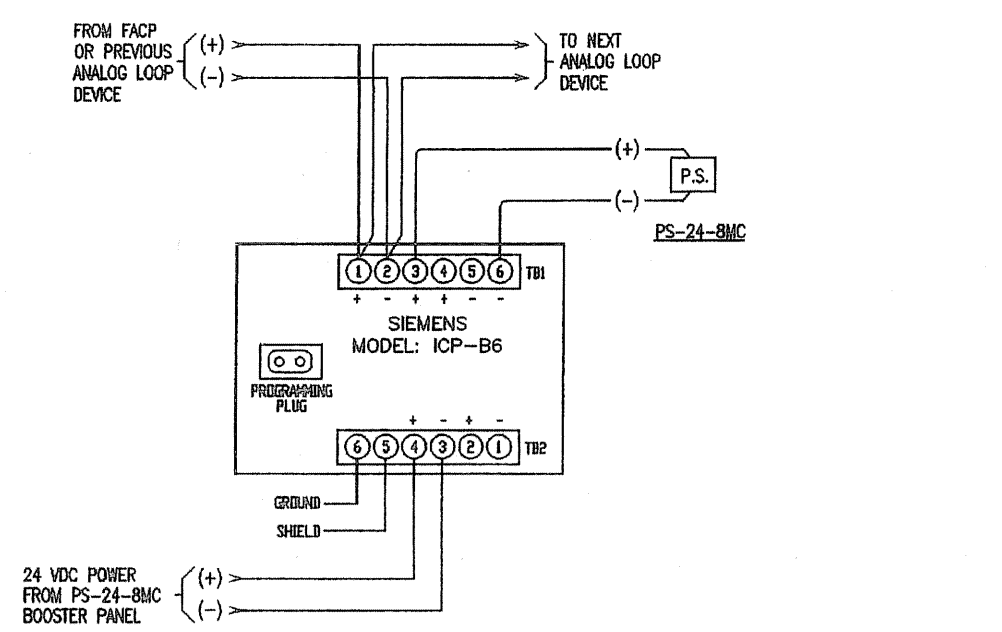
FP-11 INTELLIGENT PHOTOELECTRIC FIRE DETECTOR
with DB-11 DETECTOR BASE



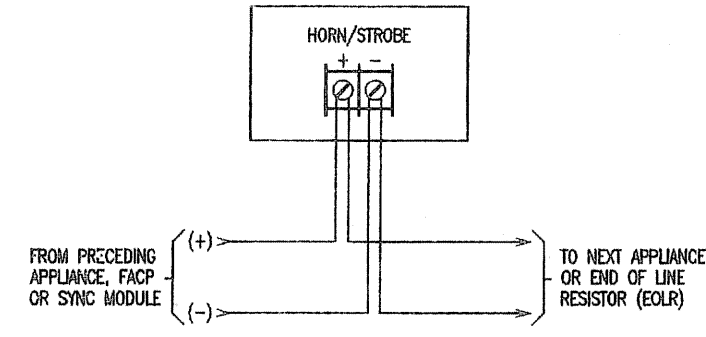
RSS-24MCW STROBE, 24VDC
(Multi-Candela Appliance)



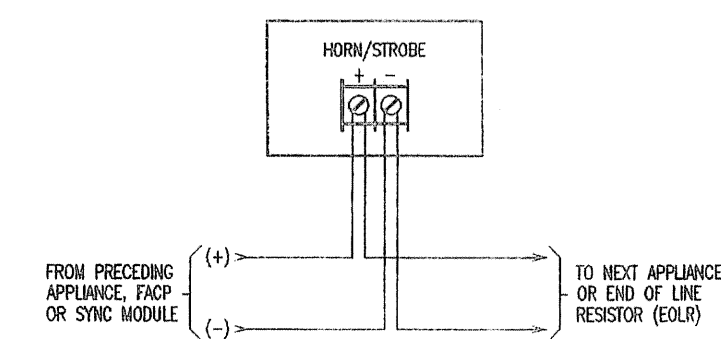
TRI-88M MINI-INTERFACE MODULE, SINGLE INPUT
for MONITORING DT-200R CONVENTIONAL HEAT DETECTOR



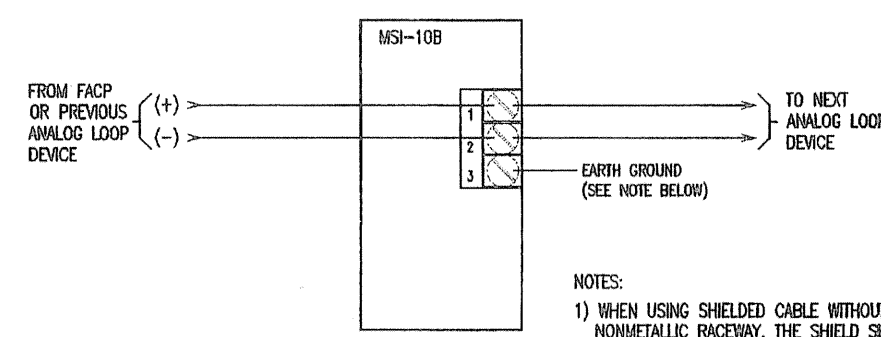
ICP CONTROL POINT MODULE
FOR P.S. ACTIVATION



NS-24MCW HORN/STROBE, 24VDC
(Multi Candela Two Wire Appliance)



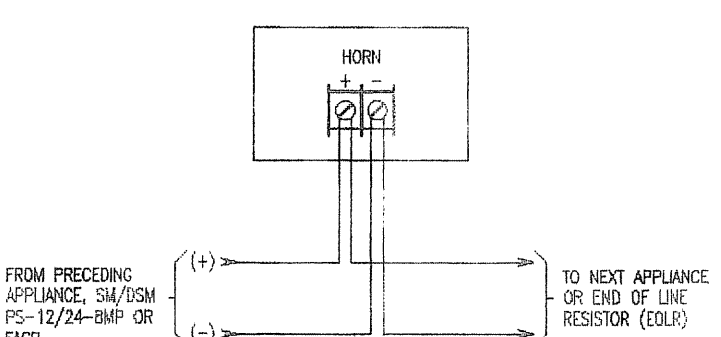
ASWP-2475W WEATHERPROOF HORN/STROBE, 24VDC
(75 Candela Two Wire Appliance)



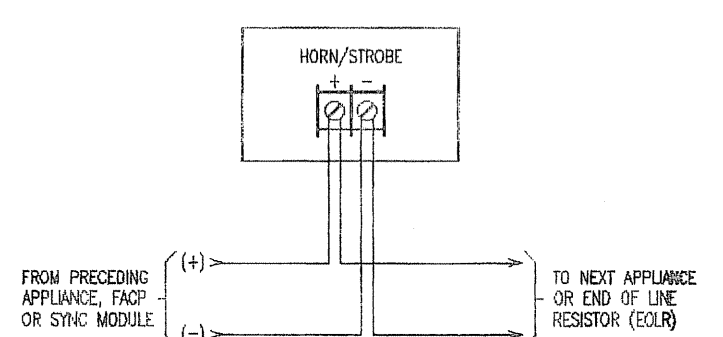
MSI-10B MANUAL PULL STATION (SINGLE ACTION)

NOTES:
1) WHEN USING SHIELDED CABLE WITHOUT METAL RACEWAY OR WITH CONDUIT NONMETALLIC RACEWAY, THE SHIELD SHOULD BE TERMINATED AT THE DEVICE BOX AND THE DEVICE GROUND TERMINAL. IF THE DEVICE BOX IS ALREADY GROUNDING BY OTHER MEANS, SUCH AS BEING MOUNTED TO A GROUNDING STRUCTURE, THE WIRE SHIELDS SHOULD BE CONTINUOUS AND MUST BE GROUNDING SELECT AT THE POINT OF ORIGIN, FOR EXAMPLE, AT THE CONTROL PANEL.
2) WHEN USING SHIELDED CABLE WITH METAL RACEWAY, THE WIRING SHIELD SHOULD BE CONTINUOUS AND GROUNDING SELECT AT THE POINT OF ORIGIN, THE DEVICE GROUND TERMINAL SHALL BE CONNECTED TO THE GROUNDING STRUCTURE.
3) WHEN USING METAL RACEWAY WITHOUT SHIELDED CABLE, CONNECT THE DEVICE GROUND TERMINAL TO THE GROUNDING DEVICE BOX.

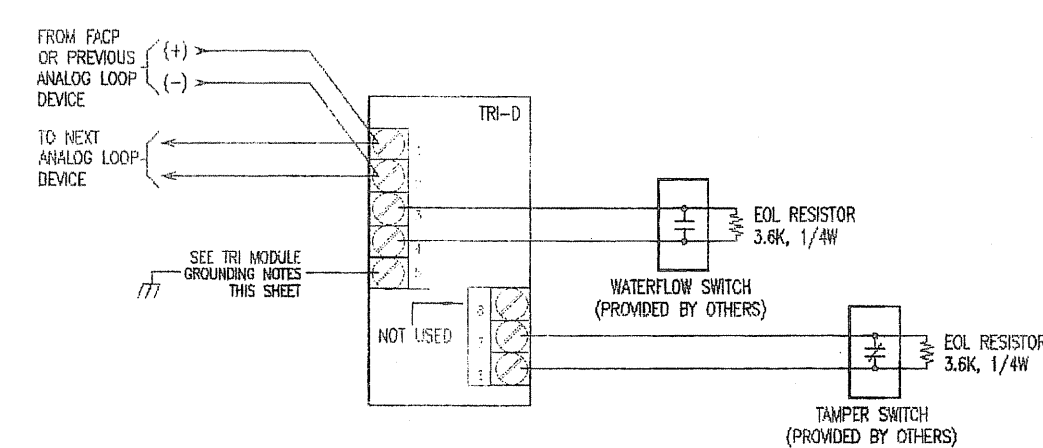
SCOPE OF WORK



NH-1224-R WALL MOUNT HORN (RED), 24VDC
(Indoor / Outdoor Appliance)



AS-24MCC HORN/STROBE, 24VDC
(Multi-Candela Ceiling Mounted Appliance)

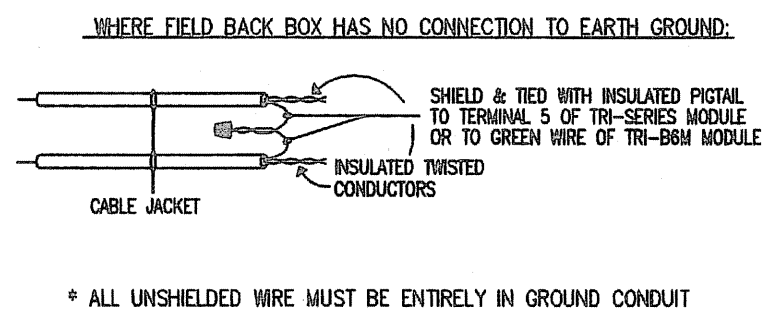
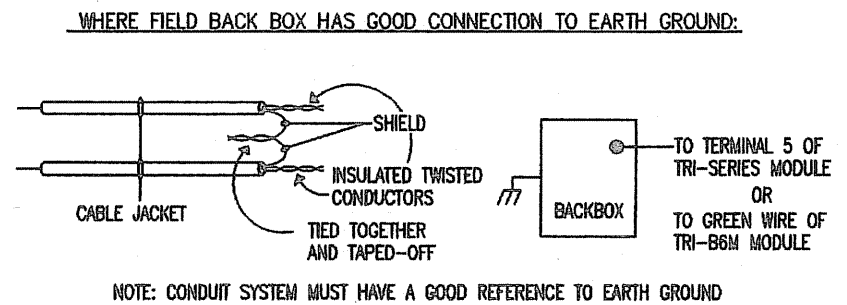


TRI-D INTERFACE MODULE, DUAL INPUT
for WATERFLOW and TAMPER SWITCH SUPERVISION
NOTE: WATERFLOW & TAMPER SWITCHES ARE FURNISHED AND INSTALLED BY SPRINKLER CONTRACTOR. COORDINATE WITH THE CONTRACTOR FOR FURTHER DEVICE DETAILS.

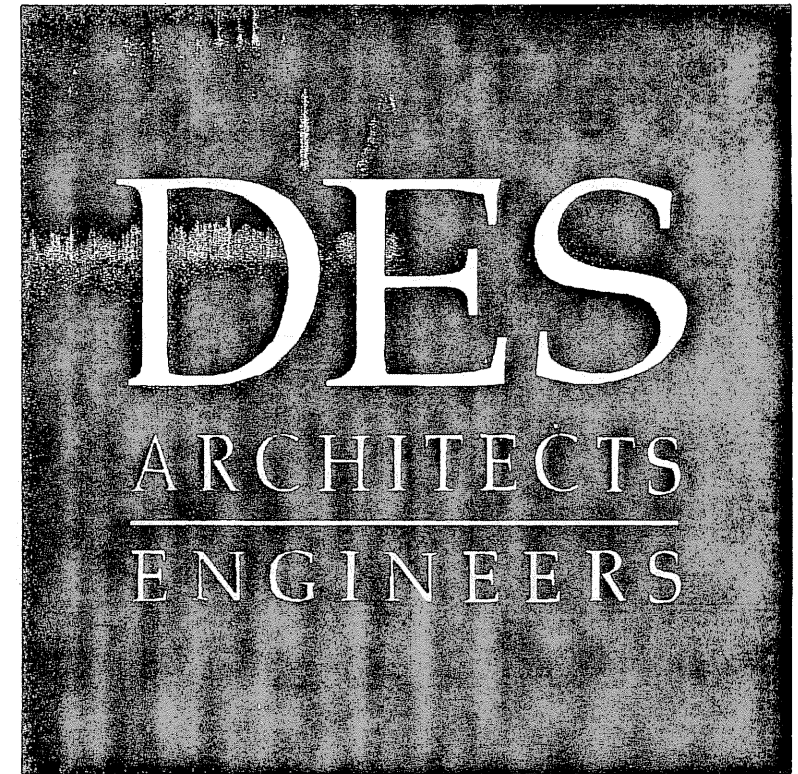
TRI-S/TRI-R/TRI-D GROUNDING NOTES

- CAUTION: GROUND SHIELD ONLY AT THE SPECIFIED LOCATION ON THE CONTROL PANEL.
 - IMPORTANT: TERMINAL 5 OF THE TRI-S/TRI-R/TRI-D MUST BE CONNECTED TO A SUITABLE GOOD EARTH GROUND FOR PROPER OPERATION.
 - IF A GOOD LOCAL EARTH GROUND IS AVAILABLE:
 - TERMINAL 5 MUST BE CONNECTED TO EARTH GROUND.
 - USE WIRE NUTS TO PASS THE SHIELD WIRE THROUGH THE ELECTRICAL BOX WITH NO CONNECTION TO THE DEVICE TERMINAL BLOCK OR TO LOCAL GROUND.
 - USE SHIELDED WIRE TO CONNECT THE SWITCH WIRING.
 - TIE THE SWITCH WIRING SHIELD TO THE AID WIRING SHIELD. DO NOT CONNECT SHIELD TO TERMINAL 5 OR THE LOCAL EARTH GROUND.
 - IF A GOOD LOCAL EARTH GROUND IS NOT AVAILABLE:
 - CONNECT SHIELD TO TERMINAL 5.
 - IF ADD WIRING IS NOT SHIELDED, THE SWITCH WIRING MUST BE IN METAL RACEWAY.
- REFER TO INSTALLATION INSTRUCTIONS FOR 914-68280-2 FOR FURTHER DETAILS

TYPICAL TRI MODULE GROUNDING DETAIL



* ALL UNSHIELDED WIRE MUST BE ENTIRELY IN GROUND CONDUIT



399 Bradford Street Redwood City, Ca. 94063
Tel: (650) 364-6453
Fax: (650) 364-2618
www.des-ae.com

SIEMENS

Building Technologies, Inc.
Fire Safety Division
SAN FRANCISCO BRANCH
25821 Industrial Boulevard, Suite 300
Hayward, California 94545-2991
Tel (510) 783-6000 Fax (510) 293-2100
California State C10 License No. 758796
U.L. Certificate ID No. 324787-001

ROBERT A. BOTHMAN, INC.

General Engineering and Building Contractors
650 QUINN AVENUE
SAN JOSE, CA. 95112
Ph: (408) 279-2277
Fax: (408) 279-2281

SAN MATEO COUNTY COMMUNITY COLLEGE DISTRICT ATHLETIC FIELDS PHASE 2

COLLEGE OF SAN MATEO
SOFTBALL FIELD TEAM ROOM & FOOTBALL HALL OF FAME
San Mateo, Ca. 94402
1700 W. Hillsdale Blvd.

WIRING DETAIL OF FIELD DEVICES

ISSUE:	DATE:	DESCRIPTION:
DSA	04/26/07	DSA SUBMISSION

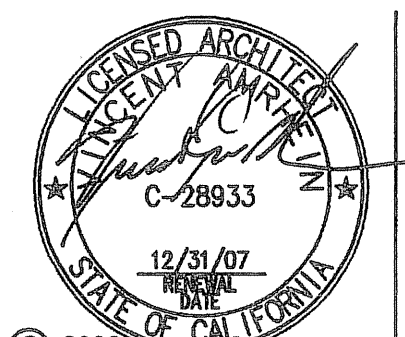
DRAWN BY: JOVEN MANLUTAC & JERI FABIAN

REVIEWED BY: KELLY ROGERS

APPROVED BY: KELLY ROGERS

SIEMENS JOB NO.: 440P-022170

IDENTIFICATION STAMP
DIVISION OF THE STATE ARCHITECT
APPL #: 01-108848
FILE #: 41-C1
AC: [Signature] FLS: [Signature] SS: [Signature]
DATE: OCT 10 2007



© 2006
SHEET NO. FA0.05

HIGHLIGHTED ITEMS ARE CONSIDERED

NEW SCOPE OF WORK