

REVISIONS


COPYRIGHT © 2003  
SARAMARK, INCORPORATED  
THESE PLAN DRAWINGS ARE PROPRIETARY DOCUMENTS OF SARAMARK, INCORPORATED & ARE NOT TO BE DISTRIBUTED, PUBLISHED OR REPRODUCED WITHOUT THE WRITTEN CONSENT OF SARAMARK INCORPORATED.

EC CONSULTING GROUP

1250 AVIATION AVE  
SUITE 2004  
SAN JOSE, CA 95110  
TEL: (408) 971-3888  
TEL: (408) 971-3519

COLLEGE of SAN MATEO

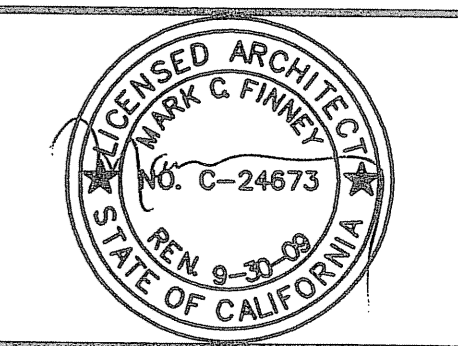
SAN MATEO UNIFIED SCHOOL DISTRICT

SARAMARK INCORPORATED

SERIES NEW

P.O. BOX 24269  
SAN JOSE, CALIFORNIA 95124  
TEL: (408) 971-3888  
FAX: (408) 971-3534

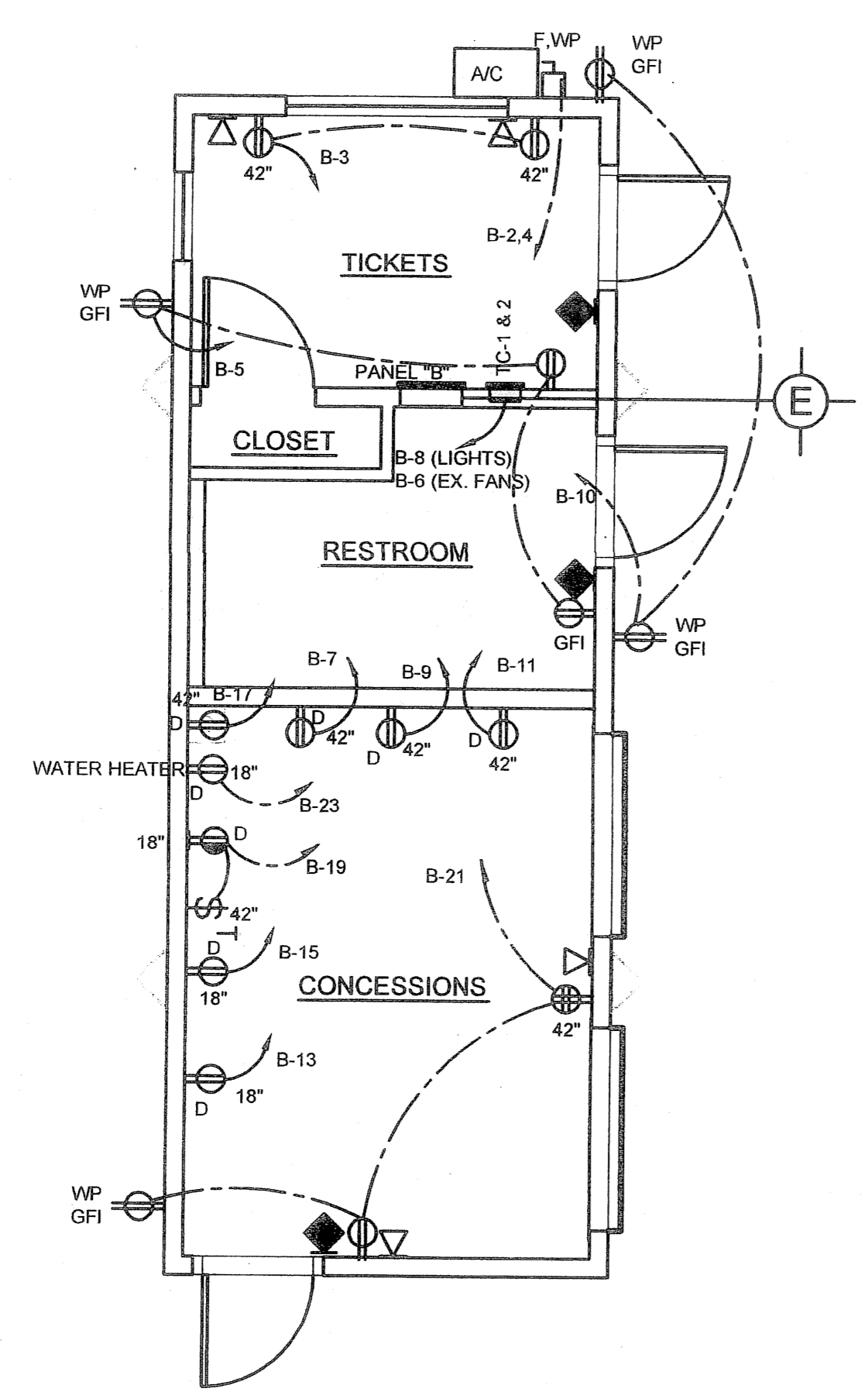
BUILDING B HALL OF FAME POWER & LIGHTING PLAN



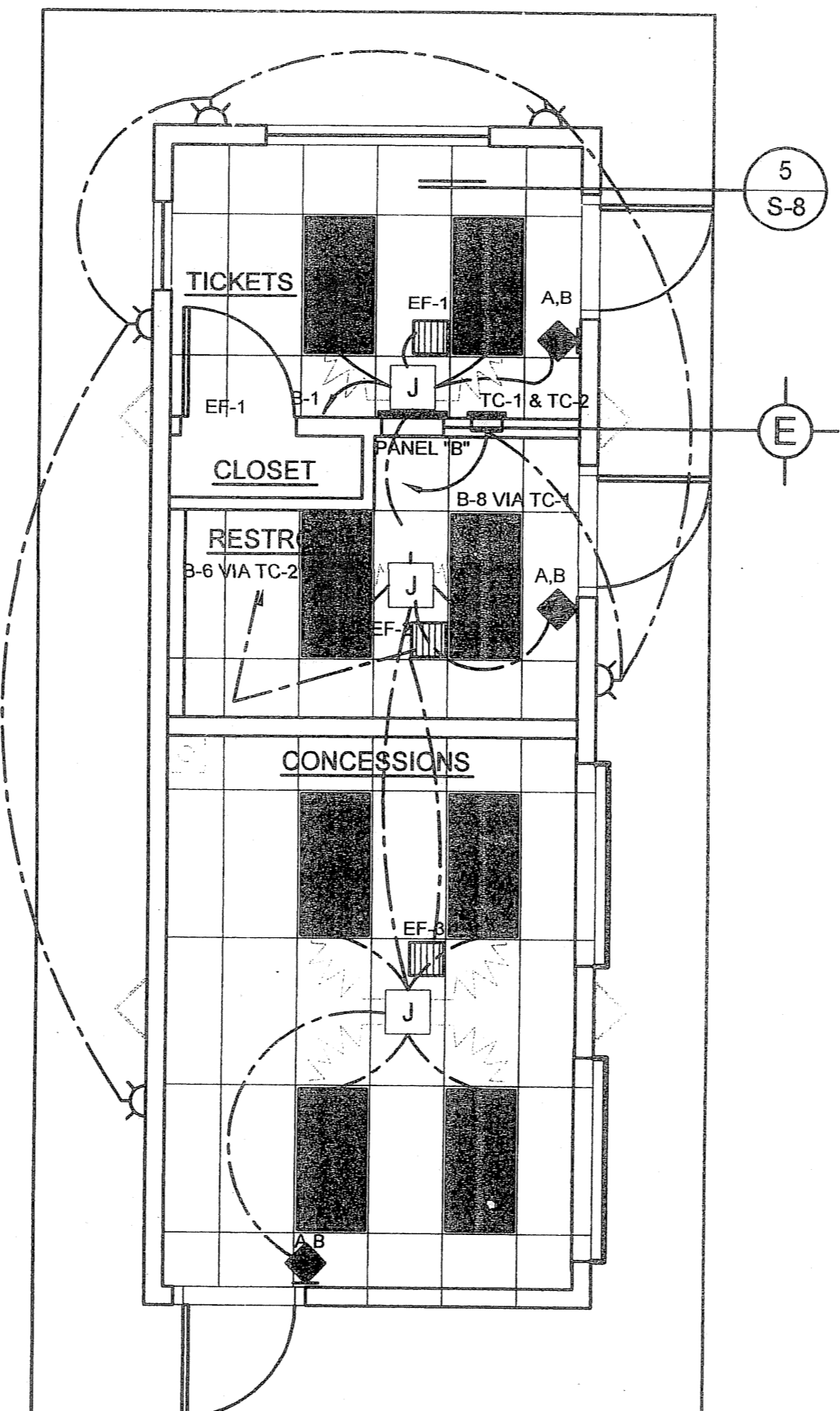
IDENTIFICATION STAMP  
DIV. OF THE STATE ARCHITECT  
OFFICE OF REGULATION SERVICES  
01-108848  
AC: C. FLS: [Signature] SS: [Signature]  
DATE: 10-20-07

DRAWN: [Signature]  
DATE: 4.11.07  
CHECKED: FAV  
SCALE: AS SHOWN  
PROJECT: 1615

B-E-1



BUILDING B - POWER PLAN - HALL OF FAME  
SCALE: 1/4" = 1'-0"



BUILDING B - LIGHTING PLAN - HALL OF FAME  
SCALE: 1/4" = 1'-0"

ELEC. EQUIP.

1. OUTLETS TO BE 16" MIN. A.F.F. 2. SWITCHES TO BE 48" MAX. A.F.F. 3. STROBES TO BE 80" A.F.F.
2. THE FOLLOWING HEIGHTS TO BE USED @ TIME OF SITE SPEC. APPLICATION AND WHEN APPLICABLE. LOCATION OF WALL BOXES TO BE DETERMINED AT SAME TIME.

LEGEND:

- 13" ROUND WALL MOUNTED EXTERIOR FLOURESCENT LIGHT MOUNTED @ 92" TO CENTER A.F.F. MOUNTING DETAILS PER MANUFACTURER'S RECOMMENDATION
- 2x4' FLUORESCENT LAY-IN LIGHT FIXTURE. MOUNTING DETAIL SEE 5 S-11
- 2'-0" x 2'-0" SUPPLY AIR REGISTER WITH 4-WAY DIFFUSER (SHOEMAKER). MOUNTING DETAIL SEE 4 S-12
- 4" SQ. JUNCTION BOX
- WATER PROOF
- HVAC EMERGENCY DISCONNECT
- EP-A - ELECTRICAL SUB-PANEL
- TIME CLOCK
- GFI - GROUND FAULT INTERRUPTER
- 13" ROUND WALL MOUNTED EXTERIOR FLOURESCENT LIGHT MOUNTED @ 92" TO CENTER A.F.F. MOUNTING DETAILS PER MANUFACTURER'S RECOMMENDATION
- KEYLESS LAMP HOLDER (60W, 120V)
- 110V DUPLEX OUTLET MTD. @ 16" A.F.F. (U.O.N.)
- 120V DUPLEX OUTLET MTD. IN ATTIC SPACE ADJACENT TO DATA JACK
- 110V DATA OUTLET
- OCCUPANCY SENSOR, MIN. 6' AWAY FROM PP
- POWER PACK
- STANDARD SWITCH
- DOUBLE-SWITCH

SHEET NOTES:  
◇ PROVIDE LABEL "GFI PROTECTED" AT ALL RECEPTACLES CONNECTED TO 20A GFCI CIRCUIT BREAKERS.

TYPE OF LOAD AND LOCATION	KVA			TRIP	CT NO.	TRIP	KVA			TYPE OF LOAD AND LOCATION
	A	B	C				A	B	C	
LIGHTS - STORAGE	0.8			20	1	2	0.8			AC
RECEPT. - TICKET BOOTH		1		20	3	4		0.8		
RECEPT. - RESTROOM & EXT.			1	20	5	6			0.8	EX. FANS VIA TC-2
RECEPT. - FOUNTAIN DRINK	.4			20 GFI	7	8	.5			EXT. LIGHTS VIA TC-1
RECEPT. - POP CORN MACH.		1.8		20 GFI	9	10		.5		EXT. RECEPT.
RECEPT. - HOT DOG MACH.			1.7	20 GFI	11	12				
RECEPT. - REFRI.	1.5			20 GFI	13	14				
RECEPT. - ICE MACHINE		1.5		20 GFI	15	16				
RECEPT. - COFFEE MAKER			1.7	20 GFI	17	18				
RECEPT. - DISPOSAL	1			20	19	20				
RECEPT. - CONCESSION		.8		20 GFI	21	22				
WATER HEATER 30 AMP			1.5	20 GFI	23	24				
					25	26				
					27	28				
					29	30				
					31	32				
					33	34				
					35	36				
					37	38				
					39	40				
					41	42				
TOTAL	3.7	5.1	5.9				1.3	1.3	0.8	

□A □B □C  
 TOTAL 5 + 6.4 + 6.7 18.1 KVA  
 ADD 25% OF LARGEST HVAC UNIT: 0.4 KVA  
 ADD 25% OF CONTINUOUS LOAD: 1 KVA  
 TOTAL = 19.5 KVA OR 54.2 AMPS

MAIN BUS, 100 AMP 120/208 VOLT, 3Ø-4W&G, MCB: 100A/3P  
 FEEDER: 1 SET OF (1.5", #2 & 1#8G, CU, THWN) MIN.  
 CONNECT GROUND BUS TO GROUNDING ELECTRODE SYSTEM AS PER NEC.

TYPE: NQOB TRIM: FLUSH

NOTE: COORDINATE FAULT RATING OF PANELS WITH FAULT CALCULATIONS PREPARED BY THE SITE DISTRIBUTION ENGINEER.