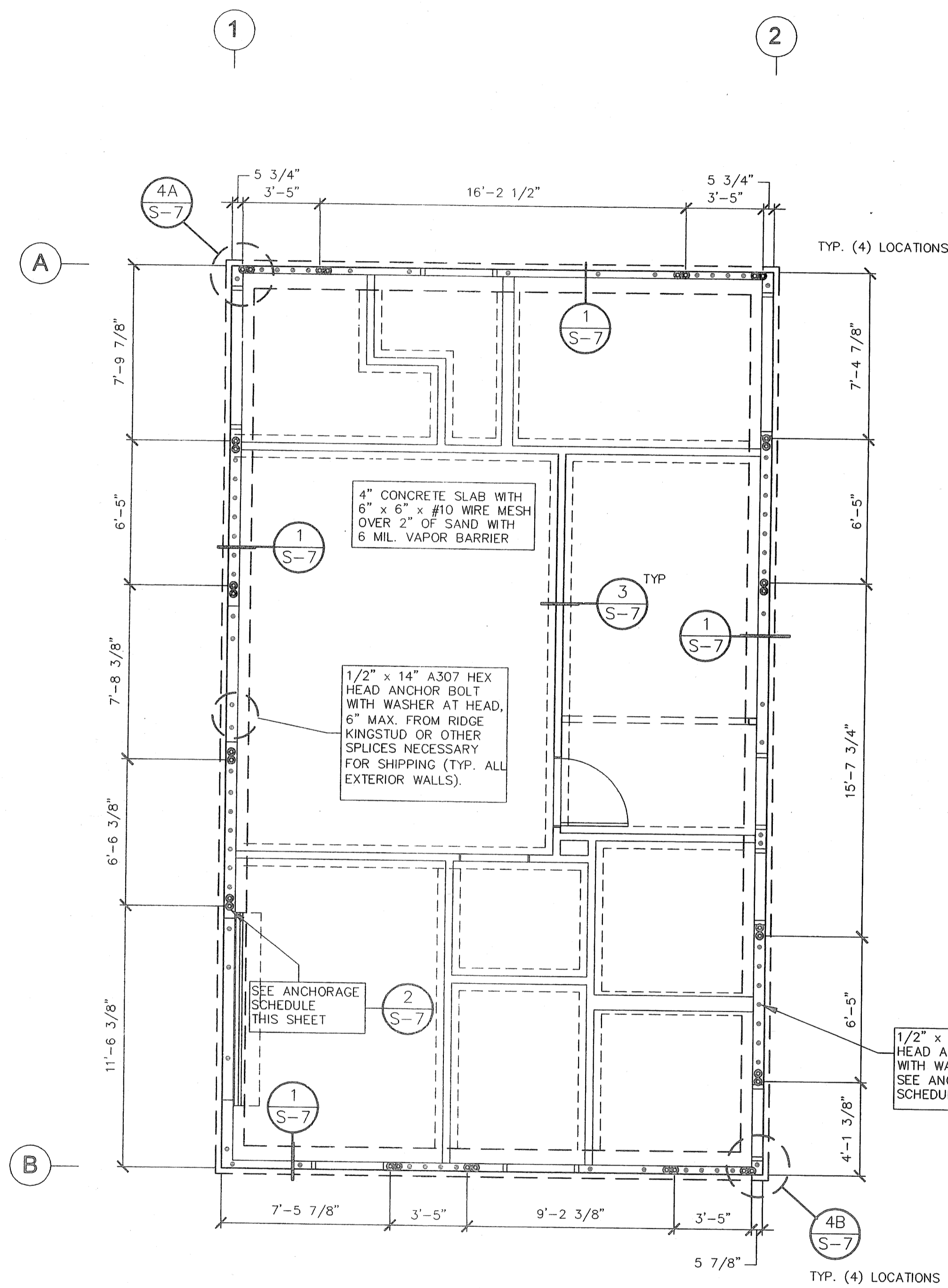


X'-BRACING PLAN
SCALE: 1/4" = 1'-0"



FOUNDATION PLAN
SCALE: 1/4" = 1'-0"

LEGEND

- HOLDOWN BOLT; HEX HEAD HOLDOWN BOLT WITH WASHER @ HEAD (SEE ANCHORAGE SCHEDULE FOR BOLT SIZE)
- ANCHOR BOLT; 1/2" x 14" A307 HEX HEAD BOLT WITH 2"x2"x3/16" (SIMPSON BP1/2) WASHER AT BOTTOM TRACK SILL & F844 OR 1 3/4" x 12GA WASHER @ HEAD.
- ≡≡≡ 3" x 16 GA. FLAT STRAP
- △ "X"-BRACING @ EACH SIDE OF STUDS (TYPICAL)

SERIES 4024AX ANCHORAGE SCHEDULE	GRID LINE			
	(A)	(B)	(1)	(2)
SIMPSON HOLDOWN	(2) HD10A	(2) HD10A	(2) HD10A	(2) HD10A
HOLDOWN BOLT DIA. & LENGTH	(2) 7/8"x18"	(2) 7/8"x18"	(2) 7/8"x18"	(2) 7/8"x18"
HOLDOWN ATTACHMENT TO DOUBLE STUD	4-7/8" BOLTS	4-7/8" BOLTS	4-7/8" BOLTS	4-7/8" BOLTS
TRACK ANCHOR DIA. & LENGTH	1/2"x14"	1/2"x14"	1/2"x14"	1/2"x14"
TRACK ANCHOR MAX. SPACING	48" O.C.	48" O.C.	48" O.C.	48" O.C.
BOLTS BETWEEN HOLDDOWN	3 & 4	3	8	8
MAX. SPACING TRACK BOLTS BETWEEN HOLDDOWNS	10" O.C.	10" O.C.	12" O.C.	12" O.C.
"X" BRACING MARK	△	△	△	△
NON-BEARING PARTITIONS	ALL - HILTI X-DNI			
NON-BEARING MAX. SPACING	ALL - 32" OC			

LEGEND

X-BRACING MARK	LENGTH	(DECIMAL FT.)	WALL TYPE
△	7'-0"	(7.00')	RAKE
△	4'-0"	(4.00')	LEVEL

REVISIONS

1		
2		
3		
4		
5		
6		

COPYRIGHT © 2003
SARAMARK, INCORPORATED

THESE PLAN DRAWINGS ARE PROPRIETARY DOCUMENTS OF SARAMARK, INCORPORATED & ARE NOT TO BE DISTRIBUTED, PUBLISHED OR REPRODUCED WITHOUT THE WRITTEN CONSENT OF SARAMARK INCORPORATED.

EC CONSULTING GROUP

1280 AVIATION AVE
SUITE 200-F
SAN JOSE, CA 95110
TEL: (408) 254-5518

COLLEGE of SAN MATEO

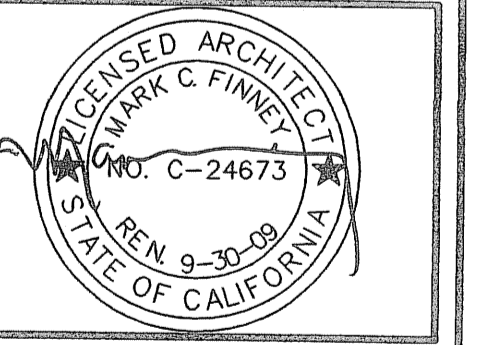
SAN MATEO UNIFIED SCHOOL DISTRICT

SARAMARK INCORPORATED

SERIES 4024AX
PC 01-108108

P.O. BOX 24399
SAN JOSE, CALIFORNIA 95124
TEL: (408) 971-3801
FAX: (408) 971-3534

BUILDING A TEAM ROOM X-BRACING AND FOUNDATION PLAN



IDENTIFICATION STAMP
DIV. OF THE STATE ARCHITECT
OFFICE OF REGULATION SERVICES

01-108848
AC. 20 OCT 10 2007

DRAWN:
DATE: 4.11.07
CHECKED: FAV
SCALE: AS SHOWN
PROJECT: 1615

A-S-1