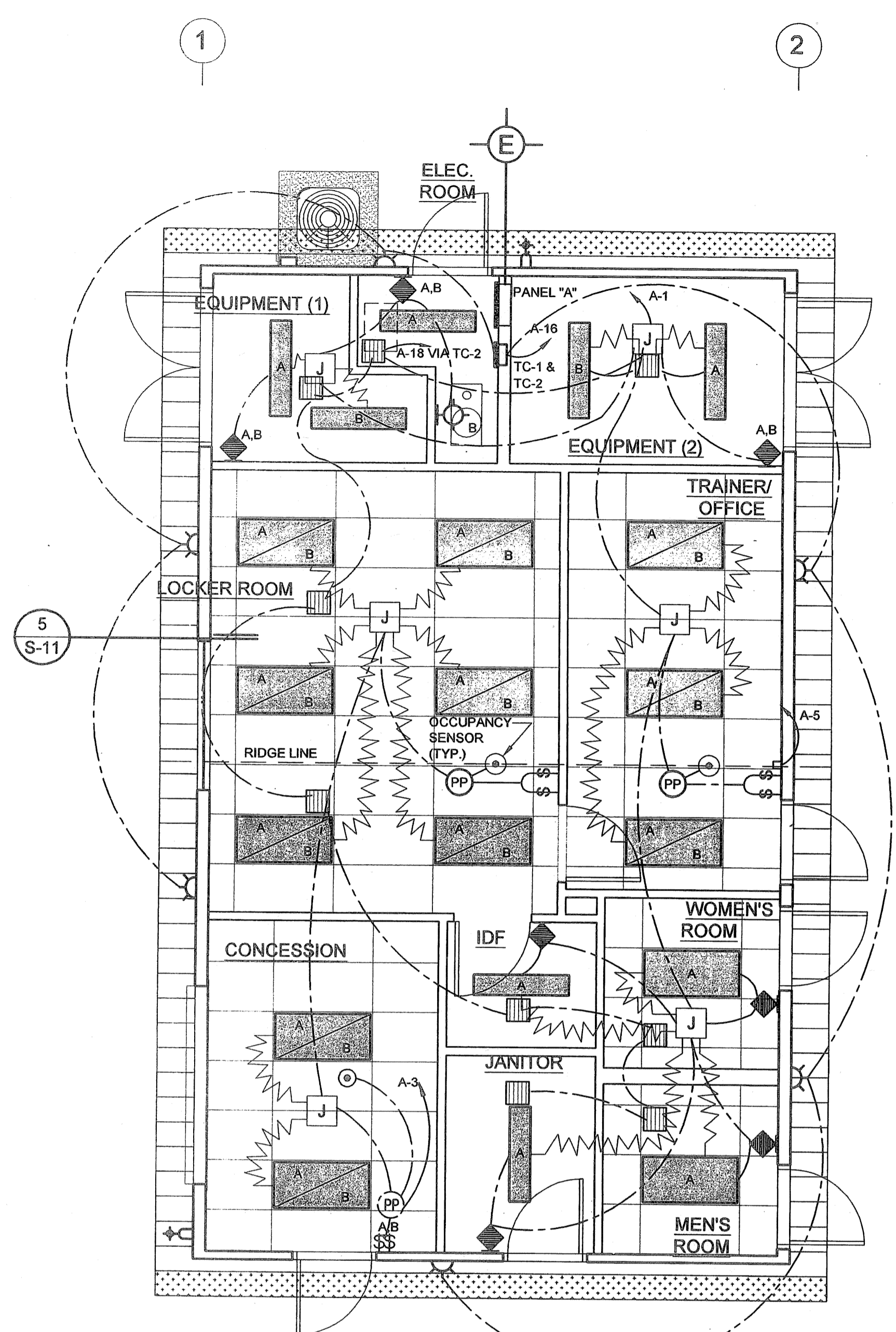


POWER PLAN
SCALE: 1/4" = 1'-0"



LIGHTING PLAN
SCALE: 1/4" = 1'-0"

TYPE OF LOAD AND LOCATION	KVA			TRIP	CT NO.	TRIP	KVA			TYPE OF LOAD AND LOCATION
	A	B	C				A	B	C	
LIGHTS - EQUIPMENT ROOMS	1.2			20	1	2	20	1.5		WATER HEATER
LIGHTS - LOCKER/CONCESSION		.8		20	3	4	20	1.5		IDF
LIGHTS - OFFICE/RESTROOMS			1	20	5	6	20	1.5		FURNACE
RECEPT. - LOCKER ROOM	1			20	7	8	20	1.8		AC
RECEPT. - RESTROOMS		.8		20	9	10		1.8		
RECEPT. - TRAINER OFFICE			1	20	11	12	3		1.8	
RECEPT. - POP CORN MACH.	1.8			20	GFI 13	14	20	.5		RECEPTACLE
RECEPT. - HOT DOG MACH.		1.7		20	GFI 15	16	20	.5		EXT. LIGHTS VIA TC-1
RECEPT. - ICE MACH.			1.5	20	GFI 17	18	20		1	EXHAUST FANS VIA TC-2
RECEPT. - FOUNTAIN DRINK	.4			20	GFI 19	20				
RECEPT. - COFFEE MAKER		1.7		20	GFI 21	22				
RECEPT. - REFRIG.			1.5	20	GFI 23	24				
RECEPT. - DISPOSAL	1			20	25	26				
RECEPT. - CONCESSION		.2		20	GFI 27	28				
					29	30				
					31	32				
					33	34				
					35	36				
					37	38				
					39	40				
					41	42				
TOTAL	5.4	5.2	5					3.8	3.8	4.3

TOTAL = 29.9 KVA OR 83 AMPS
 MAIN BUS: 100 AMP 120/208 VOLT, 3Ø-4W/G, MCB: 100A/3P
 FEEDER: 1 SET OF (1.5" x 4Ø2 & 1ØØG, CU, THWN) MINIMUM.
 CONNECT GROUND BUS TO GROUNDING ELECTRODE SYSTEM AS PER NEC.
 TYPE: NQOB TRIM: FLUSH

SHEET NOTES:
 PROVIDE LABEL "GFI PROTECTED" AT ALL RECEPTACLES CONNECTED TO 20A GFCI CIRCUIT BREAKERS.

- GENERAL NOTES:**
- OUTLETS TO BE 16" MIN. A.F.F.
 - SWITCHES TO BE 48" MAX A.F.F.
 - STROBES TO BE 80" A.F.F.

- LEGEND:**
- 13" ROUND WALL MOUNTED EXTERIOR FLOURESCENT LIGHT MOUNTED @ 92" TO CENTER A.F.F. MOUNTING DETAILS PER MANUFACTURER'S RECOMMENDATION
 - 2x4' FLOURESCENT LAY-IN LIGHT FIXTURE. MOUNTING DETAIL SEE 5 S-11
 - 2'-0" x 2'-0" SUPPLY AIR REGISTER WITH 4-WAY DIFFUSER (SHOEMAKER). MOUNTING DETAIL SEE 4 S-12
 - 4" SQ. JUNCTION BOX
 - WP WATER PROOF
 - HVAC EMERGENCY DISCONNECT
 - EP-A - ELECTRICAL SUB-PANEL
 - TIME CLOCK
 - GFI GROUND FAULT INTERRUPTER
 - 13" ROUND WALL MOUNTED EXTERIOR FLOURESCENT LIGHT MOUNTED @ 92" TO CENTER A.F.F. MOUNTING DETAILS PER MANUFACTURER'S RECOMMENDATION
 - KEYLESS LAMP HOLDER (60W, 120V)
 - 110V DUPLEX OUTLET MTD. @ 16" A.F.F. (U.O.N.)
 - 120V DUPLEX OUTLET MTD. IN ATTIC SPACE ADJACENT TO DATA JACK
 - 110V DATA OUTLET
 - OCCUPANCY SENSOR, MIN. 6' AWAY FROM (PP)
 - POWER PACK
 - STANDARD SWITCH AS BUILT
 - DOUBLE-SWITCH CONDITION

REVISIONS	

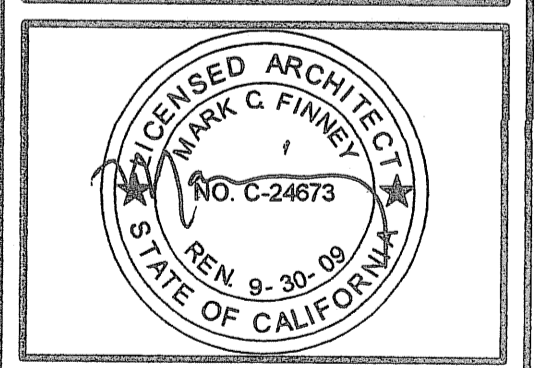
COPYRIGHT © 2003 SARAMARK, INCORPORATED
 THESE PLAN DRAWINGS ARE PROPRIETARY DOCUMENTS OF SARAMARK, INCORPORATED & ARE NOT TO BE DISTRIBUTED, PUBLISHED OR REPRODUCED WITHOUT THE WRITTEN CONSENT OF SARAMARK INCORPORATED.

EC CONSULTING GROUP
 1890 AVIATION AVE
 SUITE 500-F
 SAN JOSE, CA 95110
 TEL: (408) 294-8313

COLLEGE of SAN MATEO
 SAN MATEO UNIFIED SCHOOL DISTRICT

SARAMARK INCORPORATED
 SERIES 4024AX
 PC 01-108106
 P.O. BOX 24389
 SAN JOSE, CALIFORNIA 95154
 TEL: (408) 971-3891
 FAX: (408) 971-3534

BUILDING A TEAM ROOM POWER AND LIGHTING PLAN



IDENTIFICATION STAMP
 DIV. OF THE STATE ARCHITECT
 OFFICE OF REGULATION SERVICES
 01-108848
 AC. & FLS. [Signature]
 DATE Oct 10 2007

DRAWN: [Signature]
 DATE: 4.11.07
 CHECKED: FAV
 SCALE: AS SHOWN
 PROJECT: 1615

A-E-1

AS-BUILTS