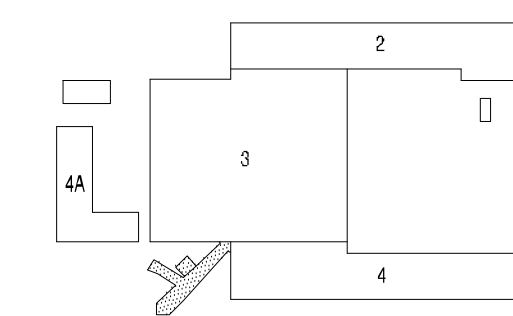


**C1** 1/4" = 1'-0"  
ELEVATOR/STAIR - STAIR ELEVATION



**C4** KEY PLAN

**BEVERLY  
PRIOR**  
*architects*

222 SUTTER STREET, 9TH FLOOR  
SAN FRANCISCO, CALIFORNIA 94108  
phone 415.777.9422 fax 415.777.2755 24/7 [bparch.com](http://bparch.com)  
architect/engineer seals



consultant

project title  
**SMCCCD  
COLLEGE OF SAN MATEO  
FINE ARTS COMPLEX  
BUILDINGS 2 & 4  
RENOVATIONS  
INCREMENT 2**  
344 CSM DRIVE  
SAN MATEO, CA 94402

agency/approvals  
IDENTIFICATION STAMP  
DIVISION OF THE STATE  
ARCHITECT  
APPL. No. 01 - 109243

AC \_\_\_\_\_ FLS \_\_\_\_\_ SS \_\_\_\_\_  
DATE \_\_\_\_\_

date	description
03.13.2008	PRICING SET
08.08.2008	DESIGN REVIEW
10.14.2008	DSA BACKCHECK
10.26.2008	AS BUILT

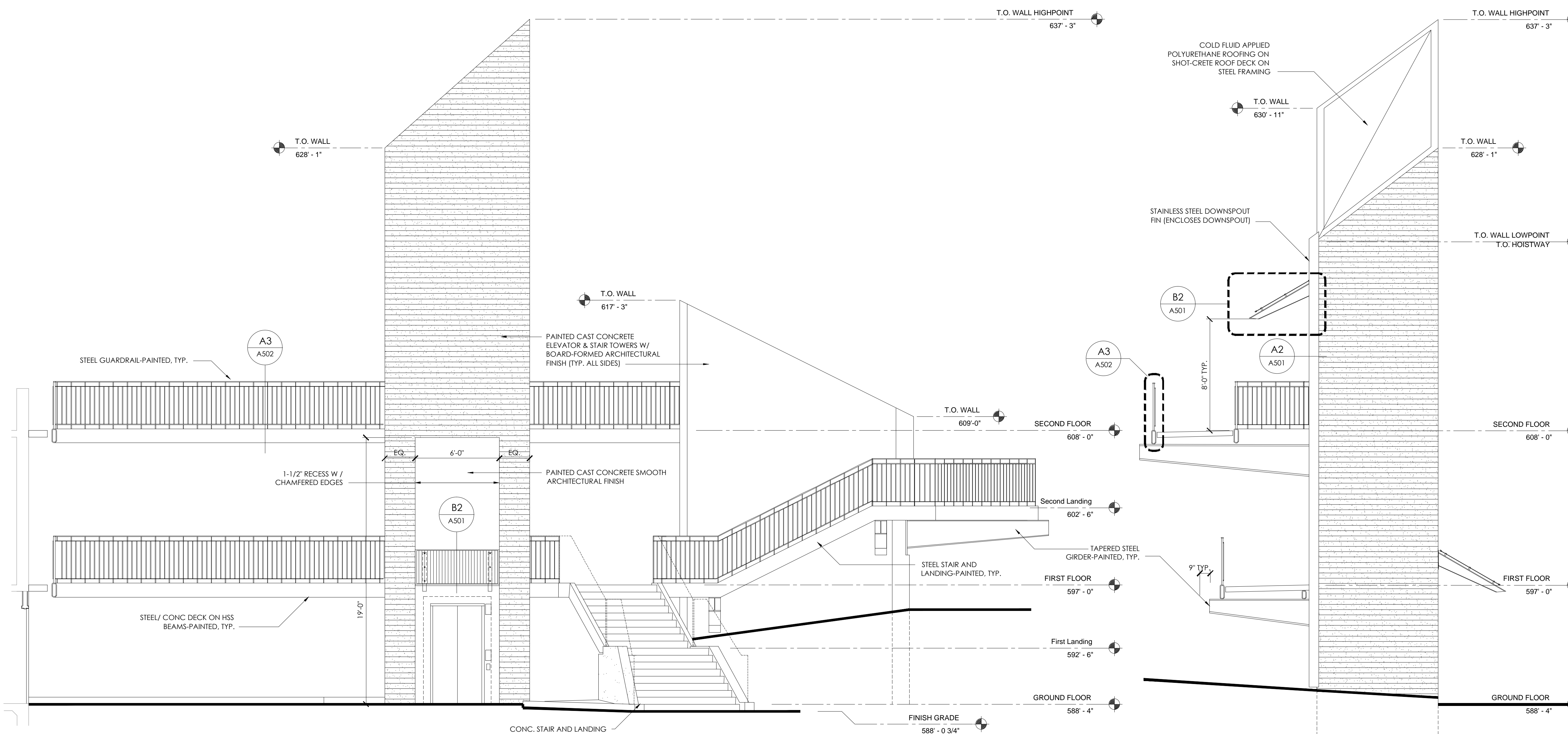
sheet title  
**EXTERIOR  
ELEVATIONS  
ELEVATOR/STAIR**

project no. 2707.01

sheet no.

**A-200**

© Beverly Prior Architects, Inc. 2007 | All Rights Reserved



**A1** 1/4" = 1'-0"  
ELEVATOR/STAIR - NORTHWEST ELEVATION  
FLAT ENTRY CANOPY

**A3** 1/4" = 1'-0"  
ELEVATOR/STAIR - NORTHEAST ELEVATION