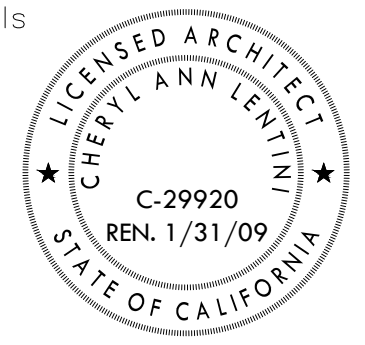


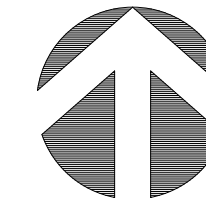
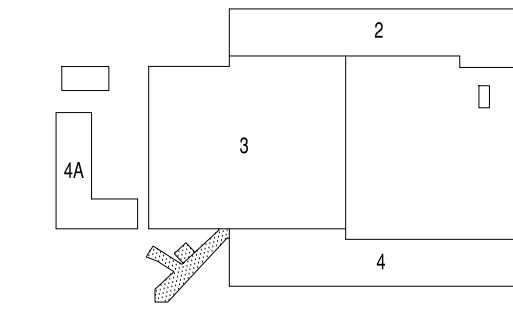
BEVERLY
PRIOR
architects

222 SUTTER STREET, 9TH FLOOR
SAN FRANCISCO, CALIFORNIA 94108
phone 415.777.9422 fax 415.777.2755 24/7 bparch.com
architect/engineer seals



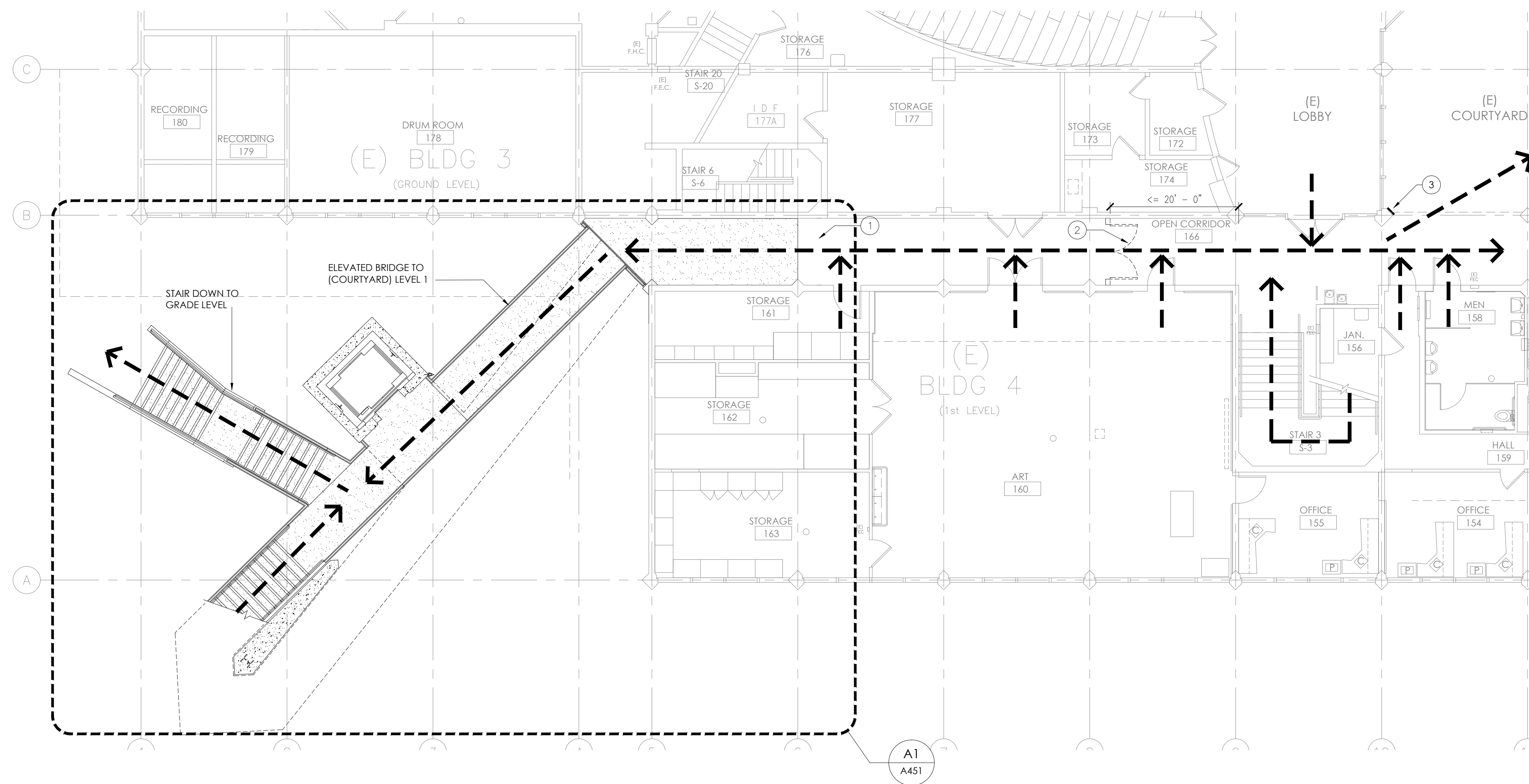
consultant

- ① TEMPORARY PARTITION
 - ② TEMPORARY PARTITION & DOOR W/ PANIC DEVICE
 - ③ ACCESSIBLE ROUTE SIGN #1, SEE C2/A555; MOUNT TO FACE OF (E) CONCRETE COLUMN
- > EGRESS PATH OF TRAVEL



C3 SHEET NOTES

C4 KEY PLAN



project title
**SMCCCD
COLLEGE OF SAN MATEO
FINE ARTS COMPLEX
BUILDINGS 2 & 4
RENOVATIONS
INCREMENT 2**

344 CSM DRIVE
SAN MATEO, CA 94402

agency/approvals
IDENTIFICATION STAMP
DIVISION OF THE STATE
ARCHITECT
APPL. No. 01 - 109243

AC _____ FLS _____ SS _____
DATE _____

date	description
03.13.2008	PRICING SET
05.08.2008	DSA SUBMITTAL
10.14.2008	DSA BACKCHECK
10.26.2008	AS BUILT

sheet title
**EXTERIOR
FIRST FLOOR
PLAN**

project no. 2707.01

sheet no.

A-136

©Beverly Prior Architects, Inc. 2007 | All Rights Reserved

A1 1/8" = 1'-0"
ELEVATOR - FIRST FLOOR PLAN