

BEVERLY
PRIOR
architects

222 SUTTER STREET, 9TH FLOOR
SAN FRANCISCO, CALIFORNIA 94108
phone 415.777.9422 fax 415.777.2755 24/7 bparch.com
architect/engineer seals



consultant

AS BUILT

project title

SMCCCD
COLLEGE OF SAN MATEO
FINE ARTS COMPLEX
BUILDINGS 2 & 4
RENOVATIONS
INCREMENT 1

344 CSM DRIVE
SAN MATEO, CA 94402

agency/approvals

IDENTIFICATION STAMP
DIVISION OF THE STATE
ARCHITECT

APPL. No. 01-109243

AC. *WF* FLS. *WF* SS. *WF*
DATE FEB 27 2008

Date	Description
07.17.2007	SD - SUBMITTAL
09.14.2007	DD - SUBMITTAL
11.16.2007	CD - SUBMITTAL DSA
02.27.2008	CD - BACKCHECK DSA
03.09.08	DSA APPROVAL

sheet title

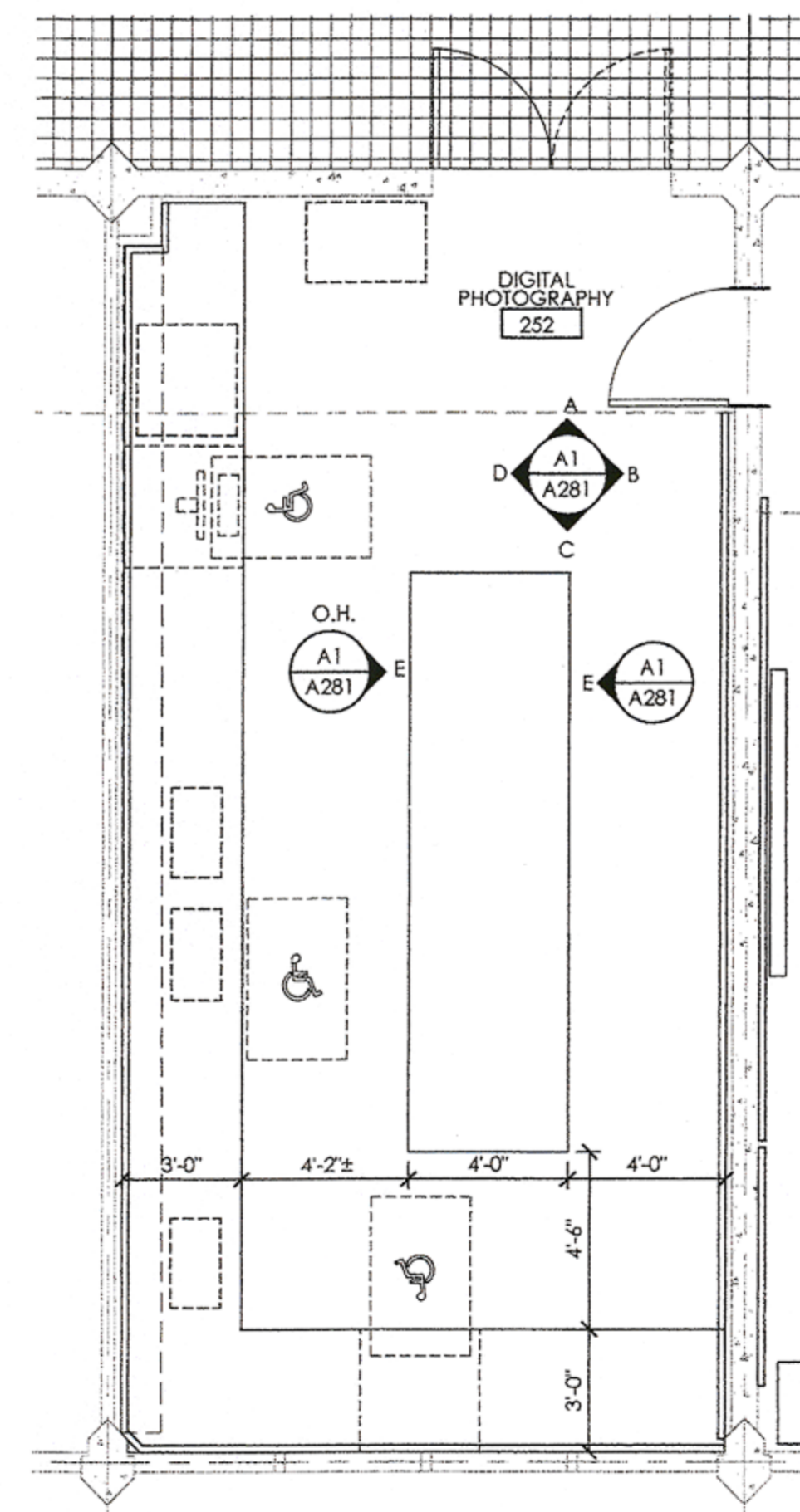
ENLARGED PLANS

project no. 2707.01

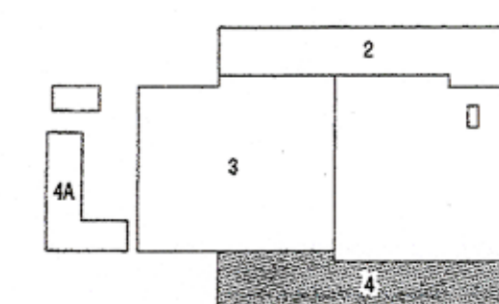
sheet no.

A-403

© Beverly Prior Architects, Inc. 2007 | All Rights Reserved



RENOVATION



A3 1/4" = 1'-0"
DIGITAL PHOTOGRAPHY 251
BUILDING 4 - SECOND FLOOR

A4 KEY PLAN