



222 SUTTER STREET, 9TH FLOOR
 SAN FRANCISCO, CALIFORNIA 94108
 phone 415.777.9422 fax 415.777.2755 24/7 bparch.com



architect/engineer seals
 consultant
AS BUILT

project title
SMCCCD COLLEGE OF SAN MATEO FINE ARTS COMPLEX BUILDINGS 2 & 4 RENOVATIONS INCREMENT 1
 344 CSM DRIVE
 SAN MATEO, CA 94402

agency/approvals

IDENTIFICATION STAMP
 DIVISION OF THE STATE ARCHITECT

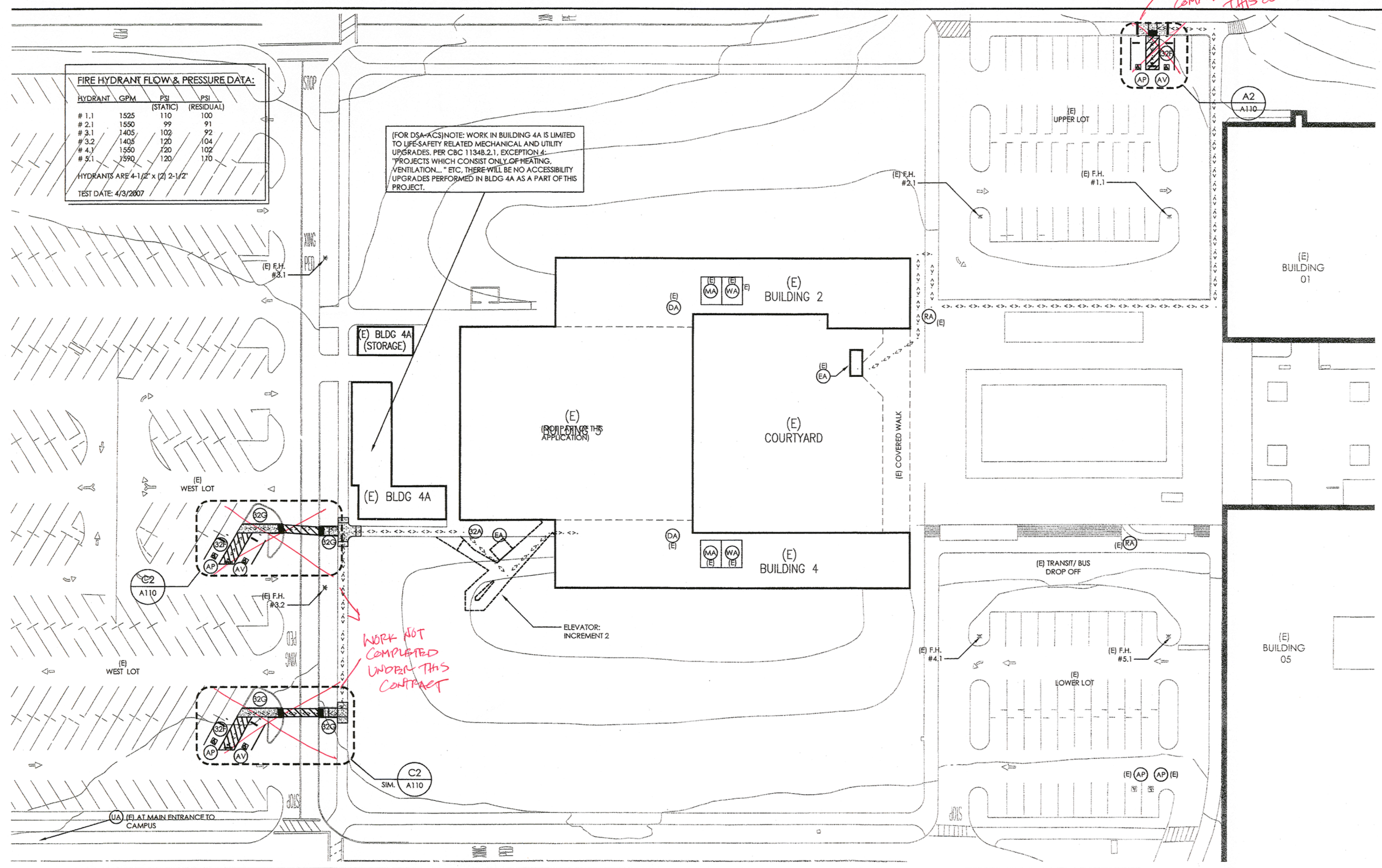
APPL. No. 01-109243

AC DS FLS WS WF
 DATE FEB 27 2008

date	description
07.17.2007	SD - SUBMITTAL
09.14.2007	DD - SUBMITTAL
11.16.2007	CD - SUBMITTAL DSA
02.27.2008	CD - BACKCHECK DSA
03.05.08	DSA APPROVAL

sheet title
SITE PLAN

project no. 2707.01
 sheet no.



FIRE HYDRANT FLOW & PRESSURE DATA:

HYDRANT	GPM	PSI (STATIC)	PSI (RESIDUAL)
# 1.1	1525	110	100
# 2.1	1550	99	91
# 3.1	1405	102	92
# 3.2	1405	120	104
# 4.1	1550	120	102
# 5.1	1590	120	110

HYDRANTS ARE 4-1/2" x (2) 2-1/2"
 TEST DATE: 4/3/2007

(FOR DSA/ACS) NOTE: WORK IN BUILDING 4A IS LIMITED TO LIFE-SAFETY RELATED MECHANICAL AND UTILITY UPGRADES, PER CBC 11348.2.1, EXCEPTION 4. PROJECTS WHICH CONSIST ONLY OF HEATING, VENTILATION, ETC., THERE WILL BE NO ACCESSIBILITY UPGRADES PERFORMED IN BLDG 4A AS A PART OF THIS PROJECT.

WORK NOT COMPLETED UNDER THIS CONTRACT

WORK NOT COMPLETED UNDER THIS CONTRACT

B1 SITE PLAN

ACCESSIBLE PATH OF TRAVEL (P.O.T.): -----

WHERE INDICATED IS A BARRIER-FREE ACCESS WITHOUT ANY ABRUPT VERTICAL CHANGES EXCEEDING 1/2" AT 1:2 MAXIMUM SLOPE, EXCEPT THAT LEVEL CHANGES DO NOT EXCEED 1/4" VERTICAL. MAXIMUM CROSS SLOPE OF 2%. ARCHITECT & CONTRACTOR TO VERIFY THAT ALL BARRIERS (PER C.B.C. SECTION 11338.7) IN THE PATH OF TRAVEL HAVE BEEN REMOVED. 1:20 MAX. LONGITUDINAL SLOPE.

ACCESSIBLE ENTRANCES:

ALL ENTRY/EXITS TO BE ACCESSIBLE PER C.B.C. 11339.1.1.1 AND 11339.2.4.2. ACCESSIBLE ENTRY/EXITS TO HAVE 24" STRIKE-SIDE CLEARANCE AT EXTERIOR SIDE OF DOOR; HAVE 60" MIN. LEVEL AREA (2% MAX SLOPE) PERPENDICULAR TO DOOR AT EXTERIOR; AND HAVE A LEVEL LANDING AREA CONNECTED TO THE ACCESSIBLE ROUTE THROUGHOUT THE SITE.

PARKING LOT IDENTIFICATION	NO. OF EXISTING PARKING SPACES	ACCESSIBLE PARKING CODE REQUIREMENT	ACCESSIBLE SPACES PROVIDED	PROVIDED UNDER APPLICATION #
UPPER LOT	46 SPACES	26-50 = 2 SPACES	2 (1 VAN, 1 AUTO)	(E) #01-54663*
(E) LOWER LOT	40 SPACES	26-50 = 2 SPACES	2 AUTO	(E) #01-54663
(E) WEST LOT-SM	39 SPACES	26-50 = 2 SPACES	2 (1 VAN, 1 AUTO)	(N) THIS APPL #
(E) WEST LOT-LG	667 SPACES	501-2000 = 14 SPACES	2 (1 VAN, 1 AUTO)	(N) THIS APPL #

* RESTRIPTED UNDER THIS APPLICATION

NOTE: A PRELIMINARY PLAN REVIEW MEETING WAS HELD AT DSA ON 8/10/2007 TO DISCUSS INTEGRATION OF CAMPUS-WIDE ACCESSIBILITY COMPLIANCE EFFORTS WITH RESPECT TO THIS PROJECT SCOPE. IT WAS DETERMINED IN CONVERSATION WITH BARRY RYAN DSA/ ACS THAT FOR THE SCOPE OF THIS PROJECT, 3 NEW ACCESSIBLE PARKING SPOTS IN THE WEST LOT WITH A PATH OF TRAVEL TO THE PROPOSED NEW ELEVATOR, IN CONJUNCTION WITH THE EXISTING DESIGNATED P.W.D. PARKING SPACES IN THE UPPER AND LOWER LOT, WOULD BE REQUIRED FOR THE SCOPE OF THIS PROJECT.

- XX SHEET NOTES:
- 32F ACCESSIBLE PARKING SPACE STRIPING & SIGNAGE
 - 32G CONCRETE CURBS AND PAVING THROUGH (E) PLANTER
 - FH FIRE HYDRANT

- ACCESSIBLE FACILITIES LEGEND**
- FOR DSA REFERENCE ONLY. SEE SHEET A-100 FOR SIGN DETAILS. EXISTING CONDITIONS ARE INDICATED AS (E). SEE A002 FOR EXISTING DSA APPLICATION NUMBERS.
- DA DRINKING FOUNTAIN/ ACCESSIBLE
 - MA MENS TOILET/ ACCESSIBLE
 - WA WOMENS TOILET/ ACCESSIBLE
 - AP PARKING SPACE AND SIGN/ ACCESSIBLE
 - AV VAN PARKING SPACE AND SIGN/ ACCESSIBLE
 - EA ELEVATOR/ ACCESSIBLE
 - RA RAMP/ ACCESSIBLE
 - UA UNAUTHORIZED VEHICLES SIGN

A1 DSA / ADA COMPLIANCE

A2 PARKING RATIO INFORMATION

A3 KEY NOTES/ LEGEND

A4 ACCESS COMPONENT KEY