

# AS BUILT SET

22  
31  
30  
16  
130 days

RECEIVED  
Firm: REDAN  
JAN 29 2010  
SWINERTON MGMT & CONSULTING INC.

RECEIVED  
SEP 21 2009  
SWINERTON MGMT & CONSULTING INC.

## SAN MATEO COUNTY COMMUNITY COLLEGE DISTRICT COLLEGE OF SAN MATEO FINE ARTS COMPLEX BUILDINGS 2 & 4 RENOVATIONS

344 CSM DRIVE, SAN MATEO CA 94402  
CONSTRUCTION DOCUMENTS  
INCREMENT 1

DSA FILE No. 41-C1  
DSA APPLICATION No. 01-109243

8/15/08  
3/30/09  
7/9

BEVERLY  
PRIOR  
architects

222 SUTTER STREET, 9TH FLOOR  
SAN FRANCISCO, CALIFORNIA 94108  
phone 415.777.9422 fax 415.777.2755 24/7 bparch.com

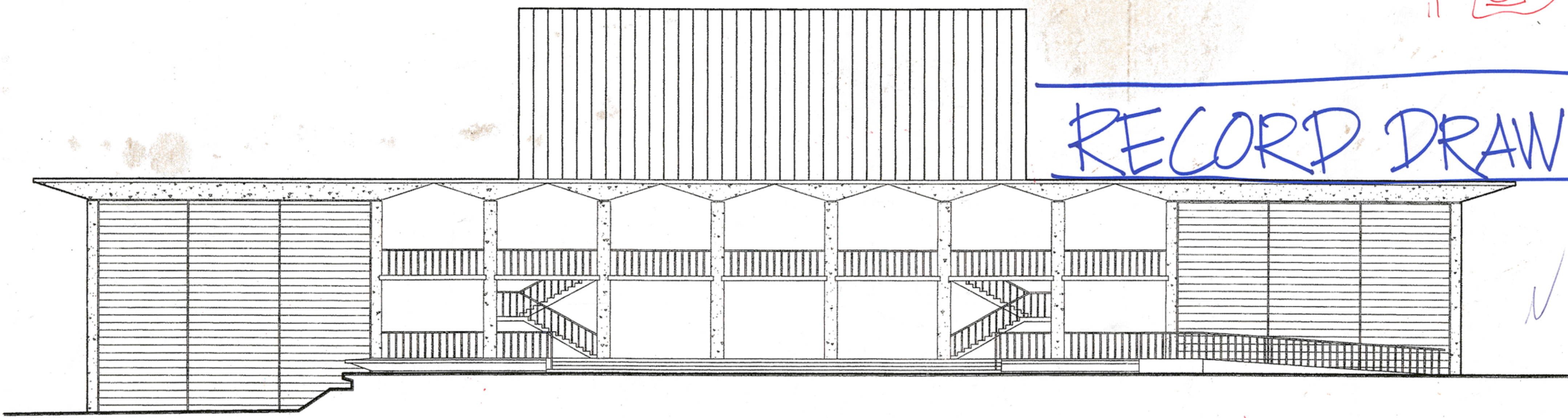
architect/engineer seals



consultant

AS BUILT

RECORD DRAWINGS



OWNER:  
SAN MATEO COUNTY COMMUNITY COLLEGE DISTRICT  
344 CSM DRIVE  
SAN MATEO, CA 94402  
(650) 358-6787  
(650) 358-6764

ARCHITECT:  
BEVERLY PRIOR ARCHITECTS, INC.  
222 SUTTER STREET, 9TH FLOOR  
SAN FRANCISCO, CALIFORNIA 94108  
(415) 777-9422  
(415) 777-2755

MECHANICAL, ELECTRICAL & PLUMBING ENGINEERS:  
GAYNER ENGINEERS  
1133 POST STREET  
SAN FRANCISCO, CALIFORNIA 94109  
(415) 474-9500  
(415) 474-1363

STRUCTURAL ENGINEER:  
CORNERSTONE STRUCTURAL ENGINEERING GROUP  
246 WEST SHAW AVENUE, SUITE 152  
FRESNO, CA 93704  
(559) 320-3200  
(559) 320-3201

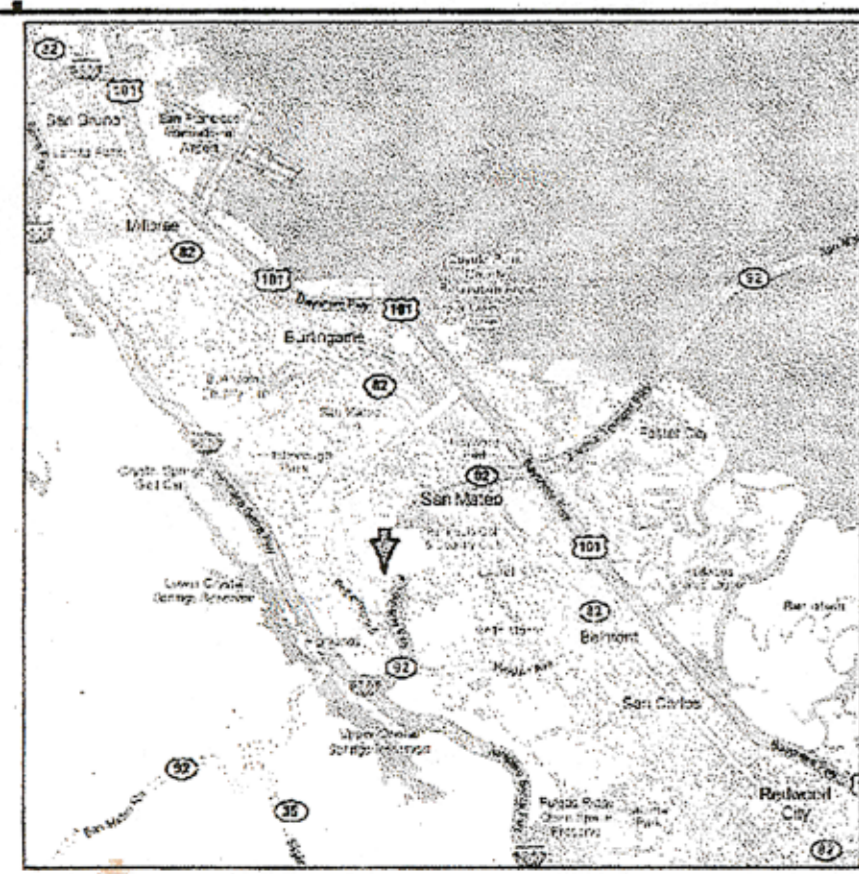
SECURITY/TELECOM/AV:  
ON LINE CONSULTING SERVICES  
388 17TH STREET, STE. 230  
OAKLAND, CA 94612  
(510) 268-1531  
(510) 839-4791

ACOUSTICAL:  
CHARLES M. SALTER ASSOCIATES, INC.  
130 SUTTER STREET, SUITE 500  
SAN FRANCISCO, CA 94104  
(415) 397-0442  
(415) 397-0454

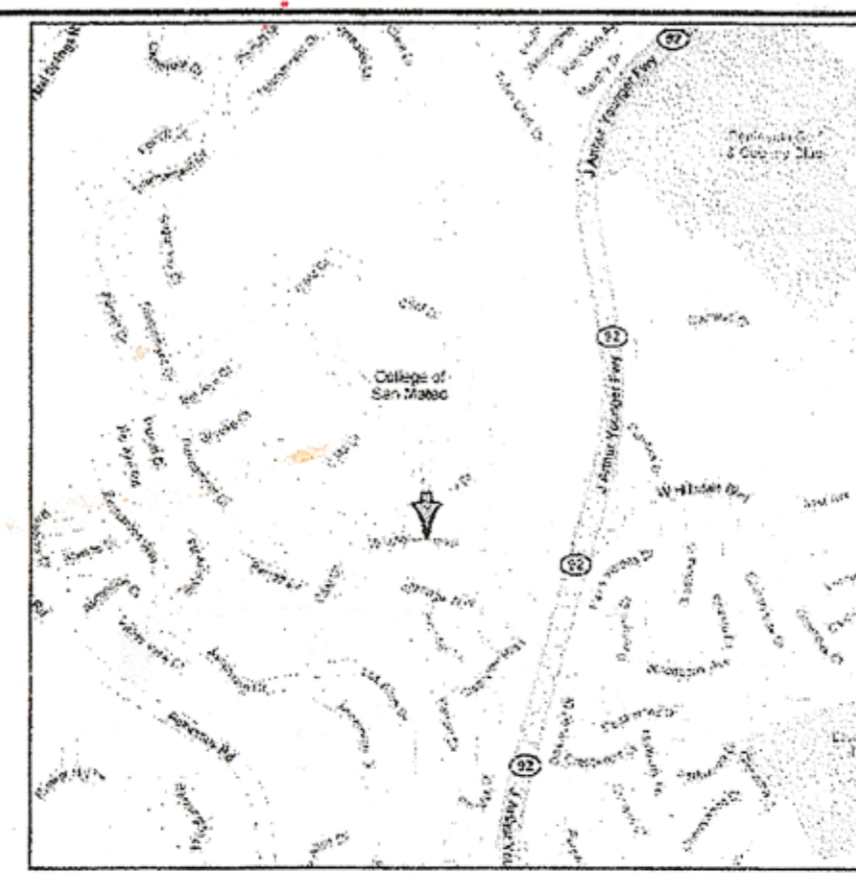
agency/approvals 41-C1  
IDENTIFICATION STAMP  
DIVISION OF THE STATE  
ARCHITECT  
APPL. No. 01-109243  
AC: BP PLS Adm. ss: WFANG  
DATE: FEB 27 2008

Date	Description
07.17.2007	SD - SUBMITTAL
09.14.2007	DD - SUBMITTAL
11.16.2007	CD - SUBMITTAL DSA
02.27.2008	CD - BACKCHECK DSA
03.05.08	DB DSA APPROVAL

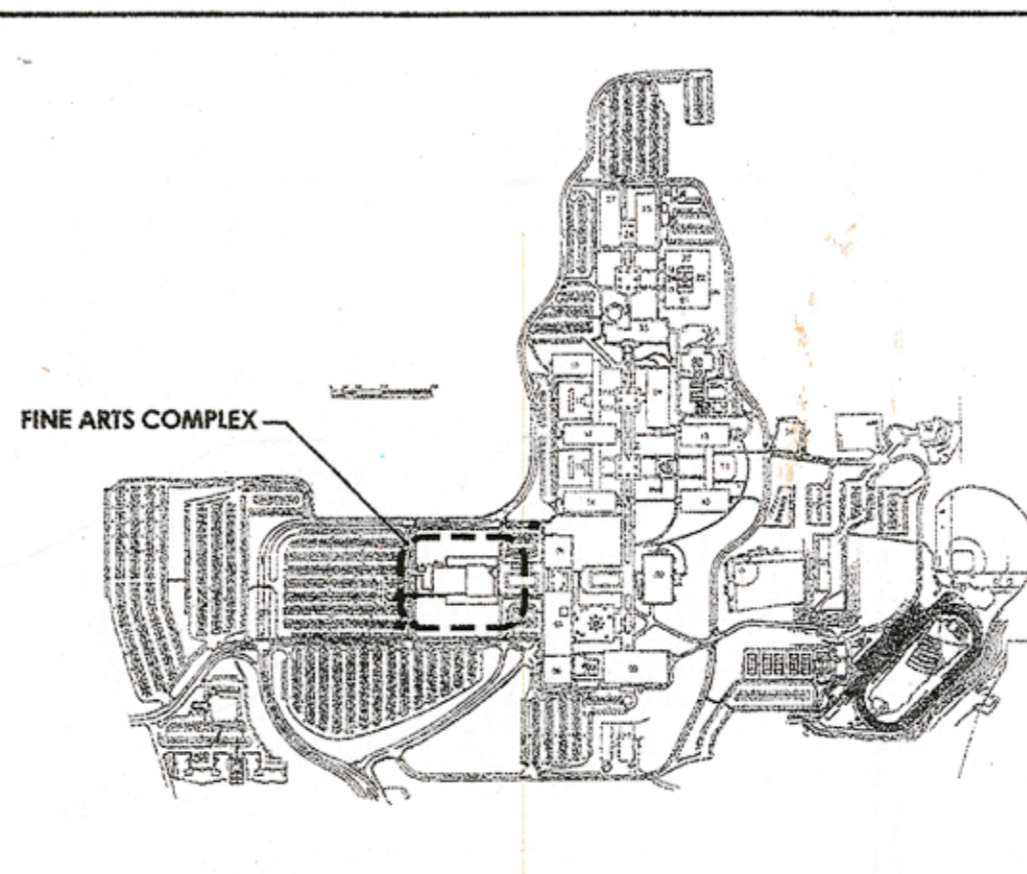
### B1 PROJECT TEAM



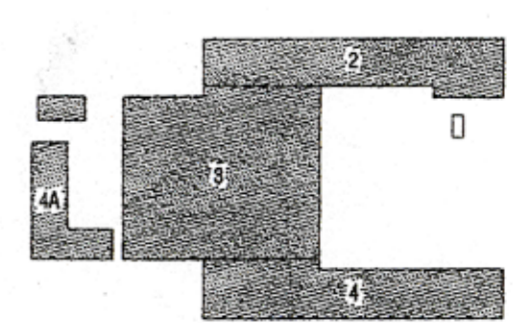
A1 VICINITY MAP



A2 AREA MAP



A3 CAMPUS PLAN



A4 KEY PLAN

COVER SHEET

project no. 2707.01

sheet no.

A000

©Beverly Prior Architects, Inc. 2007 | All Rights Reserved