

REASON	DESCRIPTION	INITIAL	DATE
AS-BUILT			
SEAL			

CONSULTANT:	<b>TEECOM</b> DESIGN GROUP
	1335 BROADWAY STE. 601 SAN MATEO, CA 94401 510-337-2800 510-337-2804 FAX www.teecom.com

**INTERACTIVE**  
R E S O U R C E S  
ARCHITECTURE • PLANNING • ENGINEERING  
117 PARK PLACE  
POINT RICHMOND  
CALIFORNIA 94801  
(510) 236-7435  
(FAX) 232-5325  
http://www.interactives.com

PROJECT:  
**BUILDING NO. 18  
(NORTH HALL)  
MODERNIZATION**

COLLEGE OF SAN MATEO  
1700 WEST HILLSDALE BLVD.  
SAN MATEO, CA 94402

SAN MATEO CO. COMMUNITY  
COLLEGE DISTRICT

NOTES: 1. This drawing is a conceptual drawing and is not to be used for construction. 2. All dimensions are in feet and inches. 3. All dimensions are to the center of the element unless otherwise noted. 4. All dimensions are to the center of the element unless otherwise noted. 5. All dimensions are to the center of the element unless otherwise noted. 6. All dimensions are to the center of the element unless otherwise noted. 7. All dimensions are to the center of the element unless otherwise noted. 8. All dimensions are to the center of the element unless otherwise noted. 9. All dimensions are to the center of the element unless otherwise noted. 10. All dimensions are to the center of the element unless otherwise noted.

SHEET TITLE:  
**TELECOM REFLECTED  
CEILING PLANS  
MODERNIZATION  
WIRELESS ACCESS PTS**

PROJ. NO. 2002-065.02  
PREPARATION AND REVIEW  
DRAWN BY  
CHECKED BY  
DATE  
PEER REVIEW  
SHEET NUMBER

**T2.2**  
OF

**GENERAL SHEET NOTES**

- REFER TO ELECTRICAL PLANS FOR DEVICE PATHWAYS, SLEEVES, AND OTHER INFORMATION.
- PATHWAYS ON THIS DRAWING ARE CONCEPTUAL AND SHALL BE FIELD COORDINATED.
- PROVIDE J-HANGERS TO SUPPORT CABLES ABOVE CEILING.
- FIRESTOP PENETRATIONS (SLEEVES AND CONDUITS) THROUGH RATED WALLS AND FLOORS TO MATCH WALL RATING.
- LABEL CONDUITS AT BOTH ENDS. LABEL SHALL INDICATE CONDUIT TO BE USED FOR SECURITY CABLES ONLY AND INDICATE THE LOCATION THE CONDUIT TERMINATES AT THE OTHER END.
- PROVIDE KNOCK-ON BUSHINGS ON CONDUIT AND SLEEVE ENDS.

**NUMBERED SHEET NOTES**

**TELECOM:**

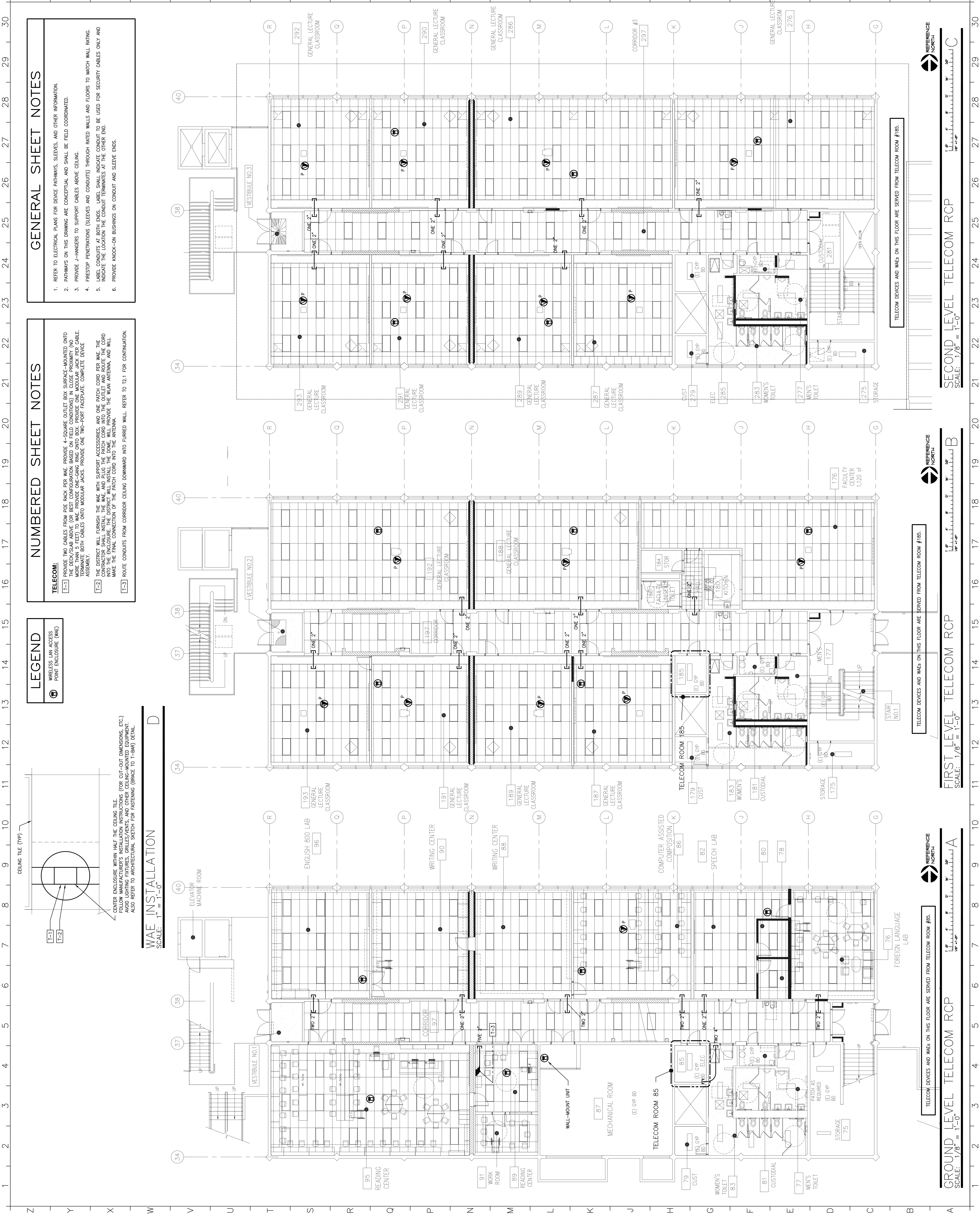
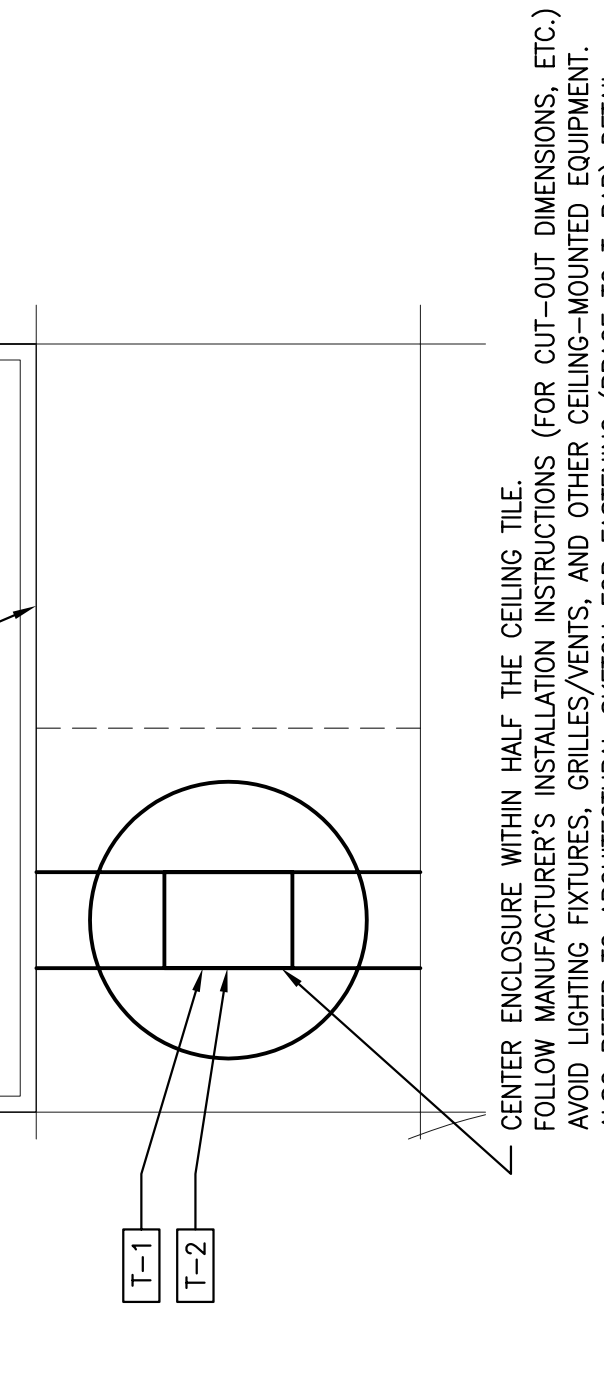
[T-1] PROVIDE TWO CABLES FROM PDE RACK PER WAE. PROVIDE 4-SQUARE OUTLET BOX SURFACE-MOUNTED ONTO THE DECK/SLAB ABOVE (OR BEST CONFIGURATION BASED ON FIELD CONDITIONS) IN CLOSE PROXIMITY AND TO THE CENTER OF THE WAE. PROVIDE TWO-PORT FACEPLATE COMPLETE ASSEMBLY. TERMINATE BOTH CABLES ONTO MODULAR JACKS. PROVIDE ONE TWO-PORT FACEPLATE COMPLETE DEVICE ASSEMBLY.

[T-2] THE DISTRICT WILL FURNISH THE WAE WITH SUPPORT ACCESSORIES, AND ONE PATCH CORD PER WAE. THE CONTRACTOR SHALL INSTALL THE WAE, AND PLUG THE PATCH CORD INTO THE OUTLET AND ROUTE THE CORD THROUGH THE CEILING TO THE WAE. PROVIDE THE WAE ANTENNA, AND WILL MAKE THE FINAL CONNECTION OF THE PATCH CORD INTO THE ANTENNA.

[T-3] ROUTE CONDUITS FROM CORRIDOR CEILING DOWNWARD INTO FURRED WALL. REFER TO T2.1 FOR CONTINUATION.

**LEGEND**

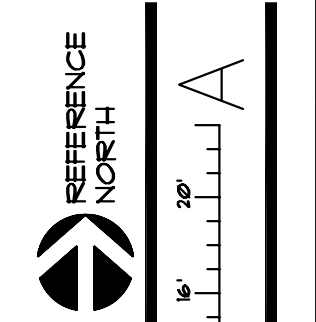
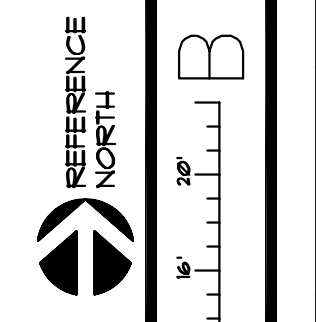
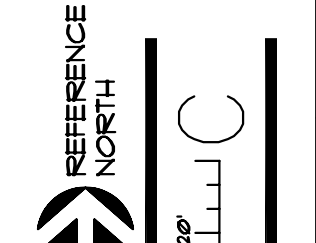
⊕ WIRELESS LAN ACCESS POINT ENCLOSURE (WAE)



**GROUND LEVEL TELECOM RCP**  
SCALE: 1/8" = 1'-0"

**FIRST LEVEL TELECOM RCP**  
SCALE: 1/8" = 1'-0"

**SECOND LEVEL TELECOM RCP**  
SCALE: 1/8" = 1'-0"



TELECOM DEVICES AND WAEs ON THIS FLOOR ARE SERVED FROM TELECOM ROOM #185.

TELECOM DEVICES AND WAEs ON THIS FLOOR ARE SERVED FROM TELECOM ROOM #185.

TELECOM DEVICES AND WAEs ON THIS FLOOR ARE SERVED FROM TELECOM ROOM #185.

TELECOM DEVICES AND WAEs ON THIS FLOOR ARE SERVED FROM TELECOM ROOM #185.