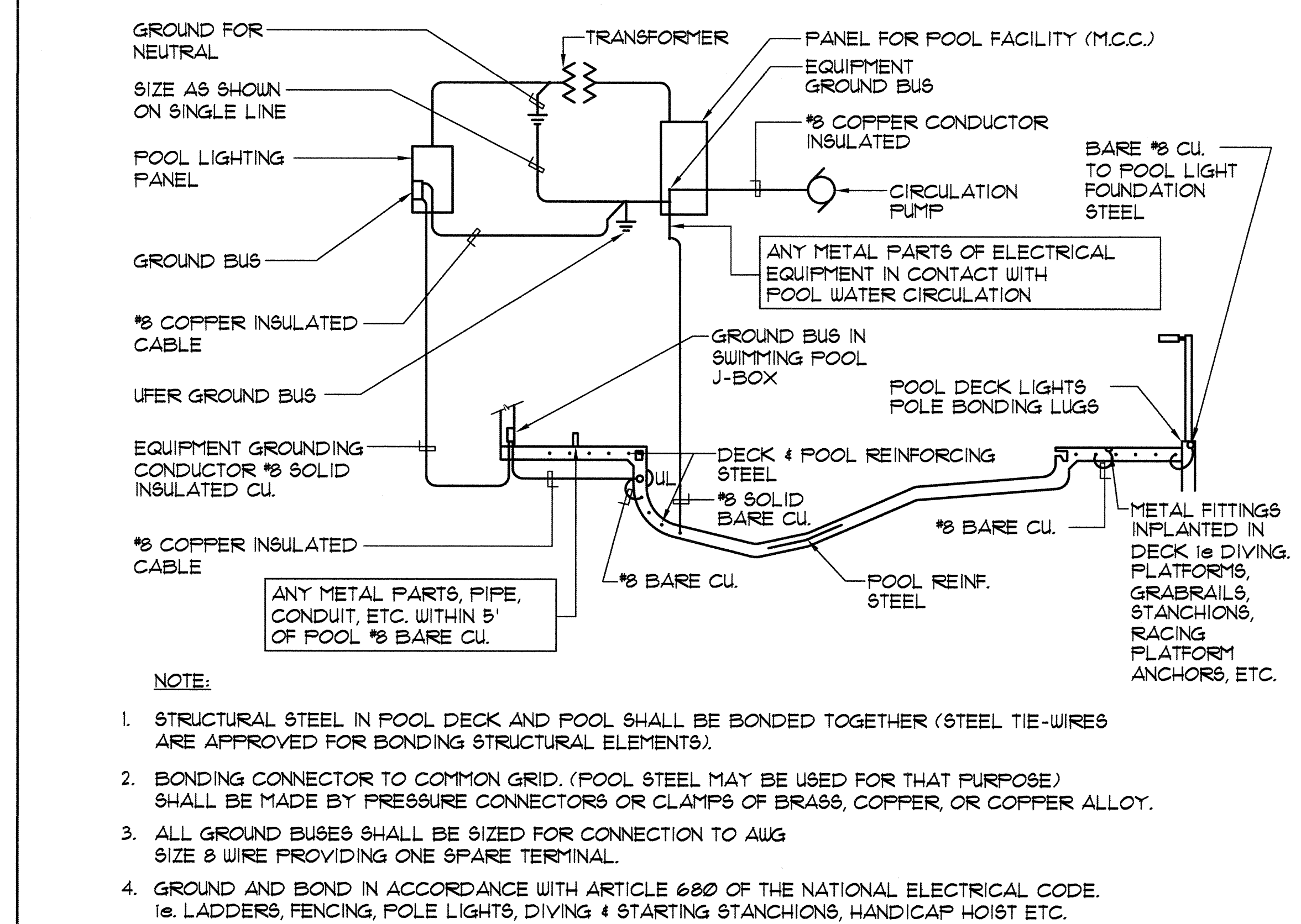
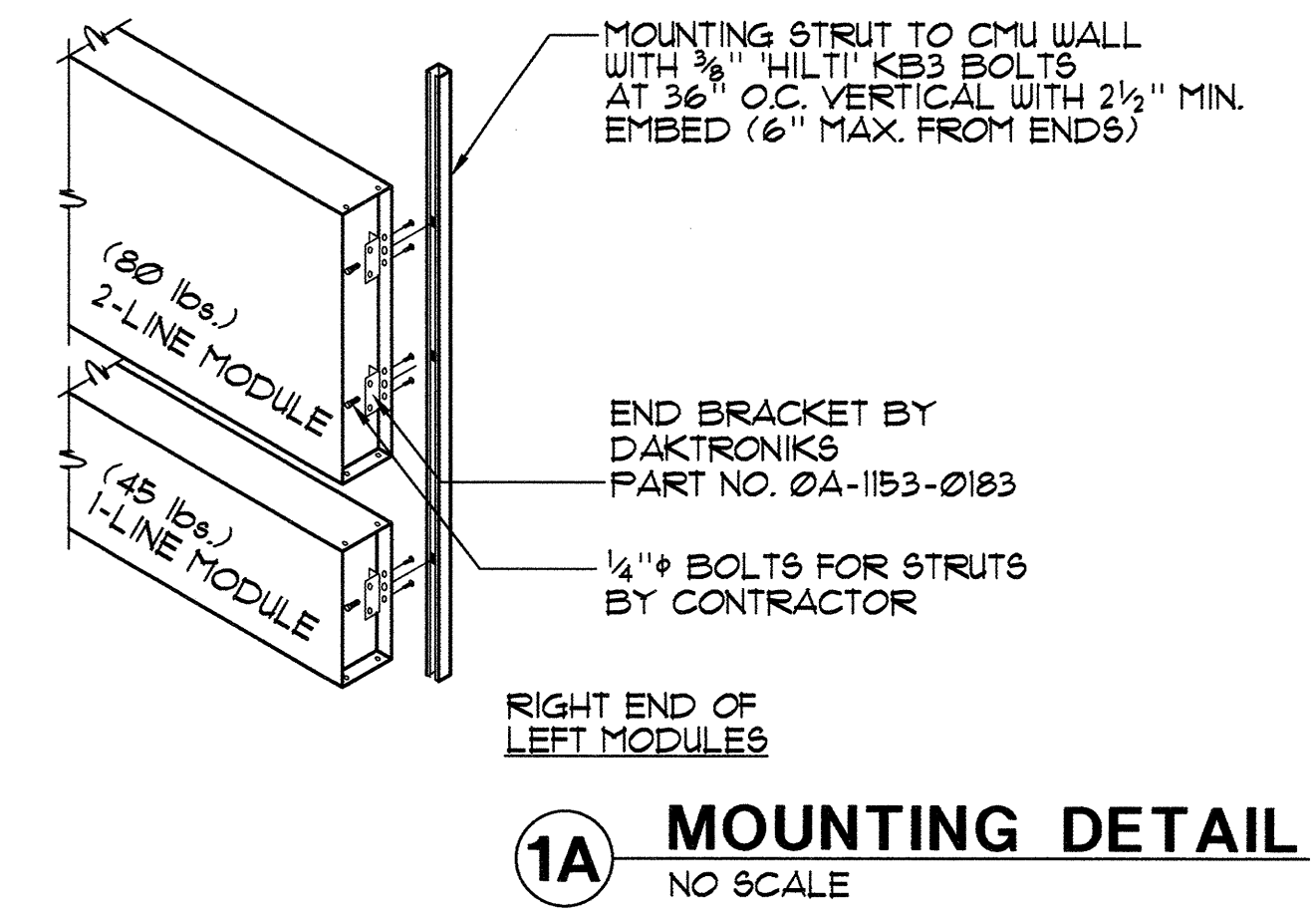


- SPECIFICATIONS:**
- LED SCOREBOARD:**
- DIGITS:
  - DIGITS ARE 10" HIGH, 1 LED SEGMENTS EACH
  - COLONS AND DECIMALS ARE VINYL
  - CAPTIONS:
  - ALL CAPTIONS ARE 5" HIGH, VINYL
- IDENTIFICATION DISPLAY:**
- LETTERS ARE 12" HIGH, VINYL
  - DISPLAY FACE IS FINISHED ALUMINUM

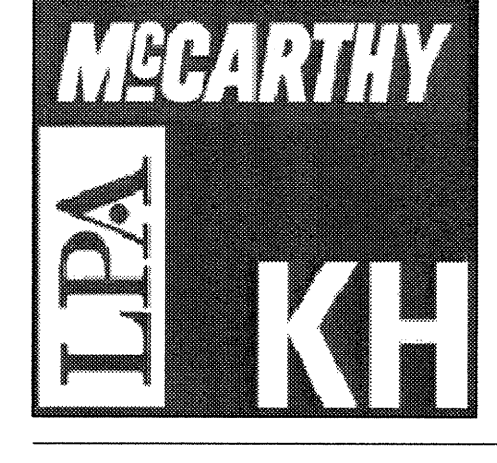
- GENERAL DISPLAY:**
- SINGLE FACE
  - ALL ALUMINUM CONSTRUCTION
  - DISPLAY FINISH TO BE SPECIFIED
  - DIMENSIONS ARE SUBJECT TO CHANGE DUE TO DETAILED DESIGN CONSIDERATIONS/ONLY APPROVED SHOP DRAWINGS SHOULD BE USED FOR CONSTRUCTION PURPOSES
  - OUTDOOR MODELS MUST BE EARTH GROUNDED/NUMBER 4 LENGTHS OF RODS TO MEET LOCAL NATIONAL ELECTRIC CODE
- MAXIMUM POWER CONSUMPTION:**
- 100 WATTS
  - 120V AC, 20 AMP CIRCUIT REQUIRED
- TOTAL SYSTEM WEIGHT:**
- APPROXIMATELY 500 LBS



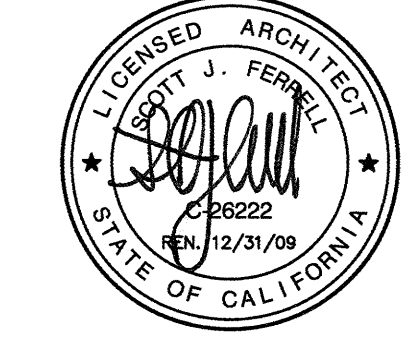
- NOTE:**
1. STRUCTURAL STEEL IN POOL DECK AND POOL SHALL BE BONDED TOGETHER (STEEL TIE-WIRES ARE APPROVED FOR BONDING STRUCTURAL ELEMENTS).
  2. BONDING CONNECTOR TO COMMON GRID. (POOL STEEL MAY BE USED FOR THAT PURPOSE) SHALL BE MADE BY PRESSURE CONNECTORS OR CLAMPS OF BRASS, COPPER, OR COPPER ALLOY.
  3. ALL GROUND BUSES SHALL BE SIZED FOR CONNECTION TO AUG SIZE 8 WIRE PROVIDING ONE SPARE TERMINAL.
  4. GROUND AND BOND IN ACCORDANCE WITH ARTICLE 680 OF THE NATIONAL ELECTRICAL CODE. IS: LADDERS, FENCING, POLE LIGHTS, DIVING & STARTING STANCHIONS, HANDICAP HOIST ETC.

**1 SCOREBOARD DETAILS** AS NOTED

**2 TYPICAL POOL BONDING AND GROUND DETAIL** NO SCALE



McCarthy Building Companies, Inc.  
343 Sansome Street, 14th Floor  
San Francisco, California 94104  
P 415 364-1339  
F 415 397-5999



IDENTIFICATION STAMP  
DIV. OF THE STATE ARCHITECT  
OFFICE OF REGULATION SERVICE  
APPL. # 01-110097  
AC. FLS. SS. D.M.  
DATE: APR 09 2009  
FILE NUMBER: 41-C1

This set of other project documents and all sheets, sections and notes incorporated herein are the property of LPA, Inc. (LPA) and shall not be used, copied, or reproduced for any project or purpose except as authorized in the contract. LPA shall not be responsible for any errors or omissions in these documents. LPA shall not be responsible for any damage to property or injury to persons or animals caused by the use of these documents. LPA shall not be responsible for any damage to property or injury to persons or animals caused by the use of these documents. LPA shall not be responsible for any damage to property or injury to persons or animals caused by the use of these documents.

College of San Mateo  
Site Package  
San Mateo, CA  
Developed for  
San Mateo County Community College District

Revision	Description	Date
19	DSA SUBMITTAL	19 SEPT 2008
09	DSA FINAL	09 APRIL 2009

Job No. 27082.30  
Date 09 APRIL 2009  
Drawn by NFC  
Checked by S.J.F.  
Scale AS NOTED

DETAILS  
CP-9