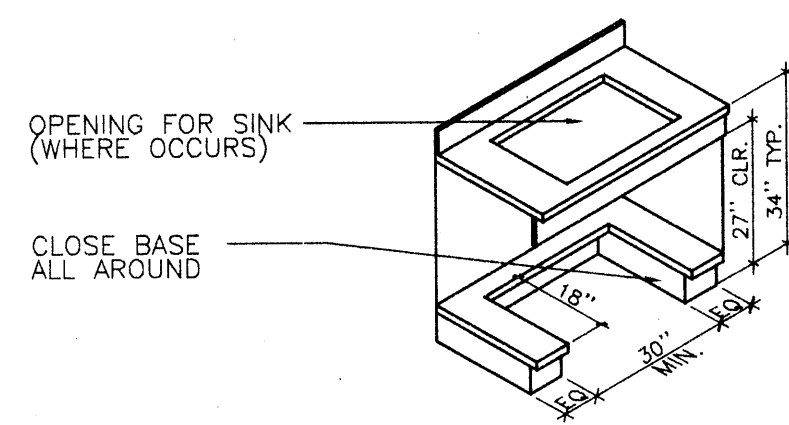


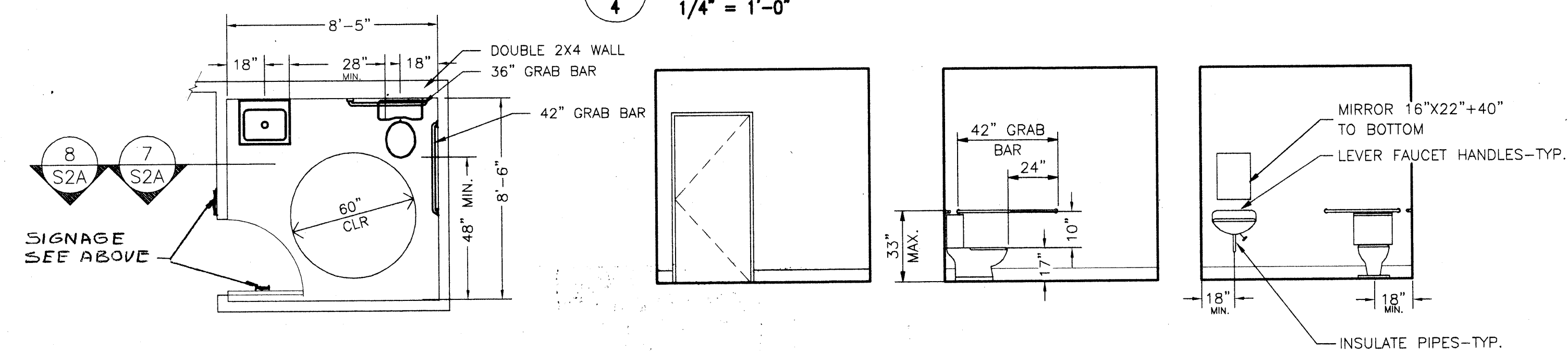
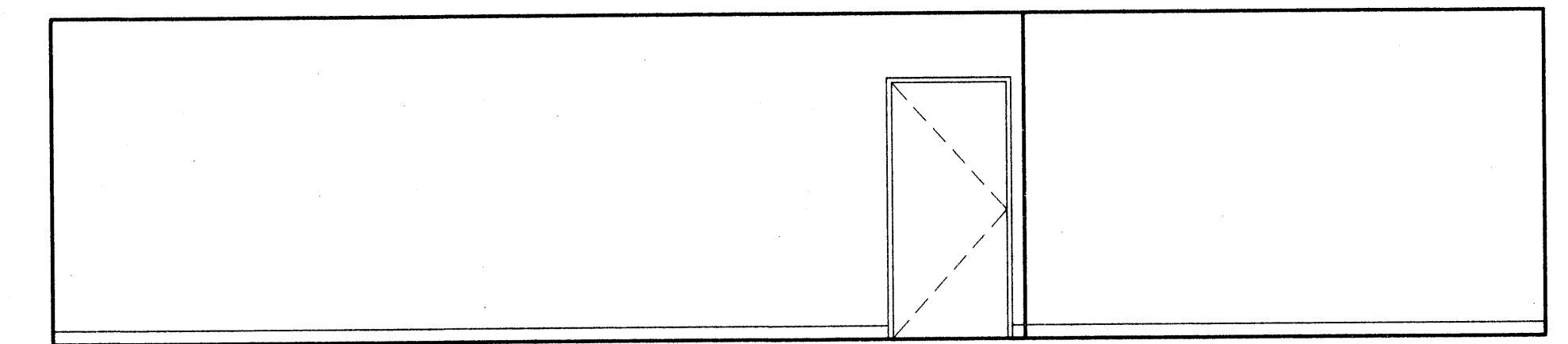
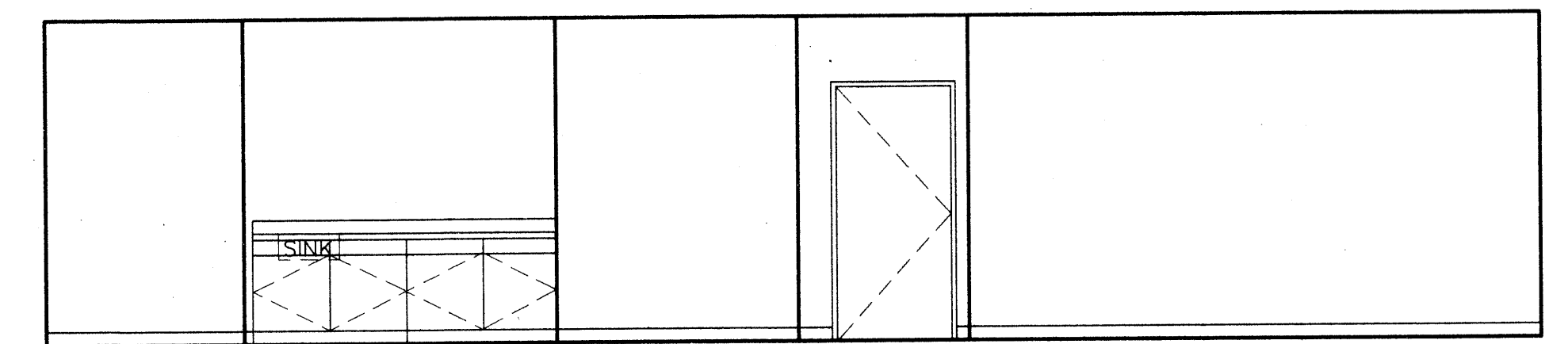
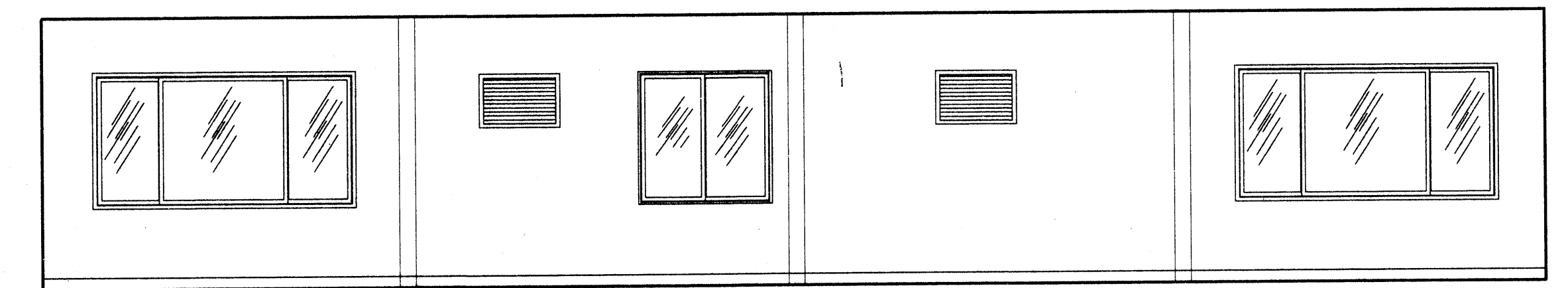
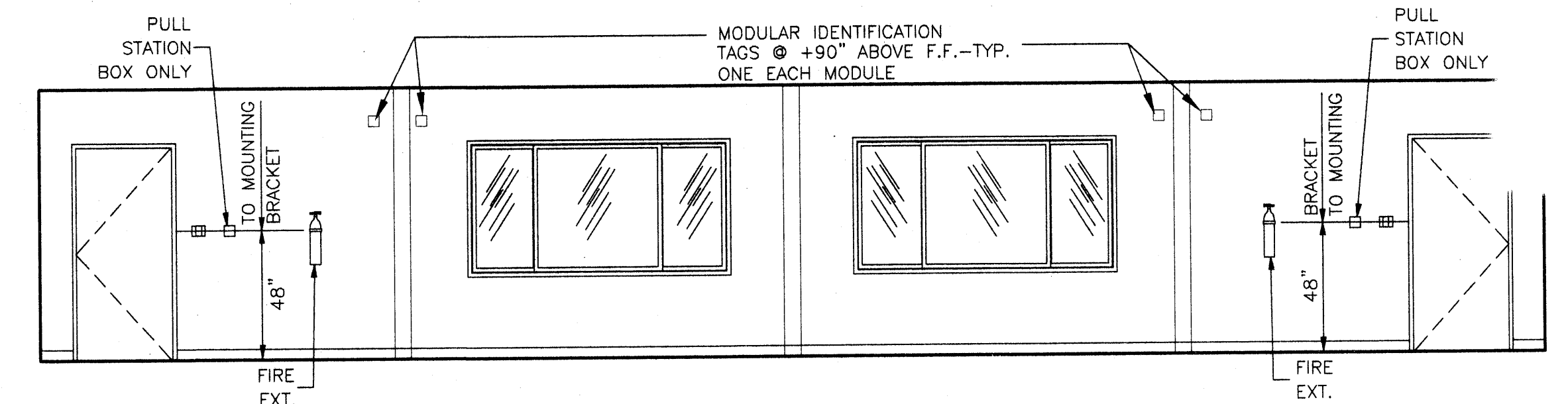
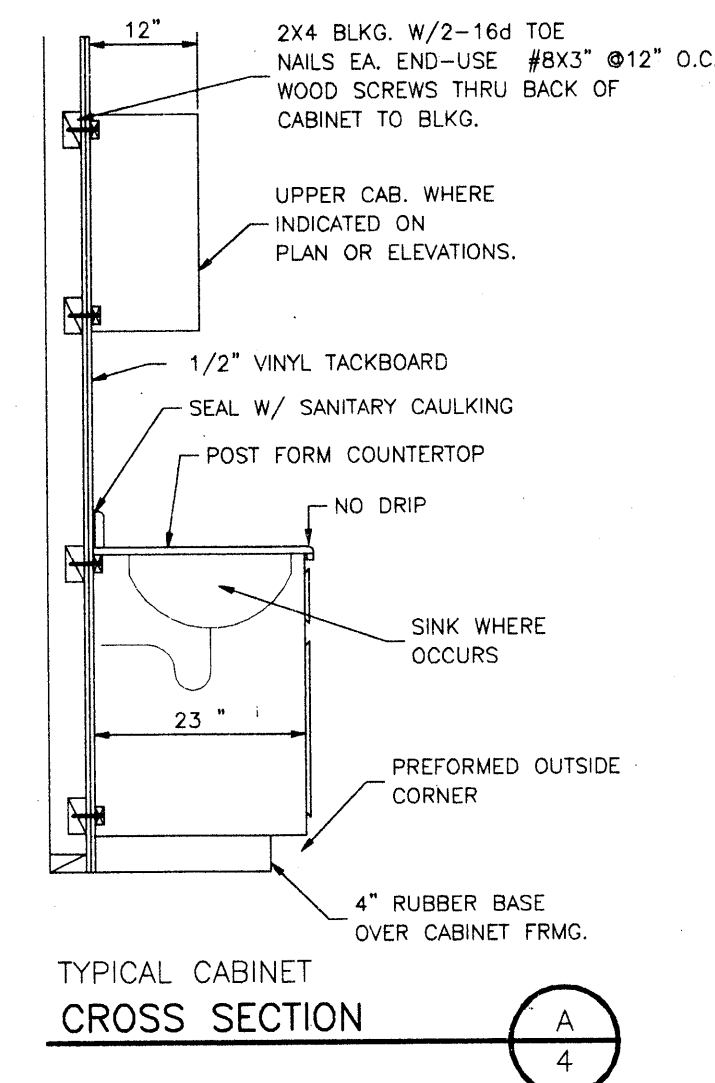
THIS DIAGRAM ILLUSTRATES THE SPECIFIC REQUIREMENTS OF THESE REGULATIONS AND IS INTENDED ONLY AS AN AID FOR BUILDING AND CONSTRUCTION

ACCESSIBLE SANITARY FACILITIES

DETAIL NO SCALE **D**/**4**



NOTES:
• DOORS NOT SHOWN FOR CLARITY. DOORS ARE TO BE PROVIDED.
• MODIFY BASE AS SHOWN FOR WHEELCHAIR ACCESS.
• ALL EXTERIOR SURFACES TO BE PLASTIC LAMINATE.



DOOR SCHEDULE											
DOOR NO.	OPENING SIZE	DOOR TYPE	DOOR				DETAILS SHFT. 1			REMARKS	
			THK.	MAT'L	FRAME MAT'L	HEAD	THRESHOLD	GLAZING	RATING		
1	3'-0"x6'-8"	A	1/2"	H.M.	H.M.	H.M.					
2	3'-0"x6'-8"	A	1/2"	H.M.	H.M.	H.M.					
3	3'-0"x6'-8"	A	1/2"	H.M.	H.M.	H.M.					
4	3'-0"x6'-8"	B	1/2"	S.C.	H.M.	H.M.					
5	3'-0"x6'-8"	B	1/2"	S.C.	H.M.	H.M.					
6	3'-0"x6'-8"	B	1/2"	S.C.	H.M.	H.M.					
7	3'-0"x6'-8"	B	1/2"	S.C.	H.M.	H.M.					

DOOR TYPES	
A EXTERIOR	B INTERIOR

FINISH SCHEDULE										
ROOM NO.	ROOM NAME	FLOOR	BASE	WALLS				CEILING	MISC.	REMARKS
				NORTH	EAST	SOUTH	WEST			
01	RESTROOM	F3	B1	W2	W2	W2	W2	C1	N/A	8-6 N/A
02	COPY ROOM	N/A	B1	W1	W1	W1	W1	C1	N/A	8-6 N/A
03	OFFICE	N/A	B1	W1	W1	W1	W1	C1	N/A	8-6 N/A
04	OFFICE	N/A	B1	W1	W1	W1	W1	C1	N/A	8-6 N/A
05	OFFICE	N/A	B1	W1	W1	W1	W1	C1	N/A	8-6 N/A
06	HOTELING AREA	N/A	B1	W1	W1	W1	W1	C1	N/A	8-6 N/A
07	L. CONFERENCE ROOM	N/A	B1	W1	W1	W1	W1	C1	N/A	8-6 N/A

FINISHES	
FLOOR FINISHES	WALL FINISHES
F1 VINYL COMPOSITION TILE	W1 1/2" VINYL WRAPPED SOUND BOARD OVER 1/2" GYPSUM BD.
F2 CARPETING	W2 1/2" MARLITE OVER
F3 SHEET VINYL	W3 1/2" GYPSUM BOARD
BASE FINISHES	CEILING FINISHES
B1 RUBBER COVE BASE	C1 SUSPENDED LAY-IN ACOUSTIC TILE
REMARKS	MISCELLANEOUS FINISHES
1 SEE PLAN FOR LOCATION OF FLOOR FINISHES	

CUSTOMER: MOBILE MODULAR MANAGEMENT CORP. **FLOOR PLAN #924**

DATE: 01-03-01
SCALE: NONE
DRAWN BY: M.H.
CHECKED BY:
CHECKED BY:
SERIAL NO.

REVISIONS					
NO	DATE	DESCRIPTION	NO	DATE	DESCRIPTION

PROJECT NO.
SHEET NO. 4



48 X 40 PC RELOCATABLE CLASSROOM

PROFESSIONAL ARCHITECT
No. 2310
02-10-23
AC 02-10-23
DATE 1/1/01