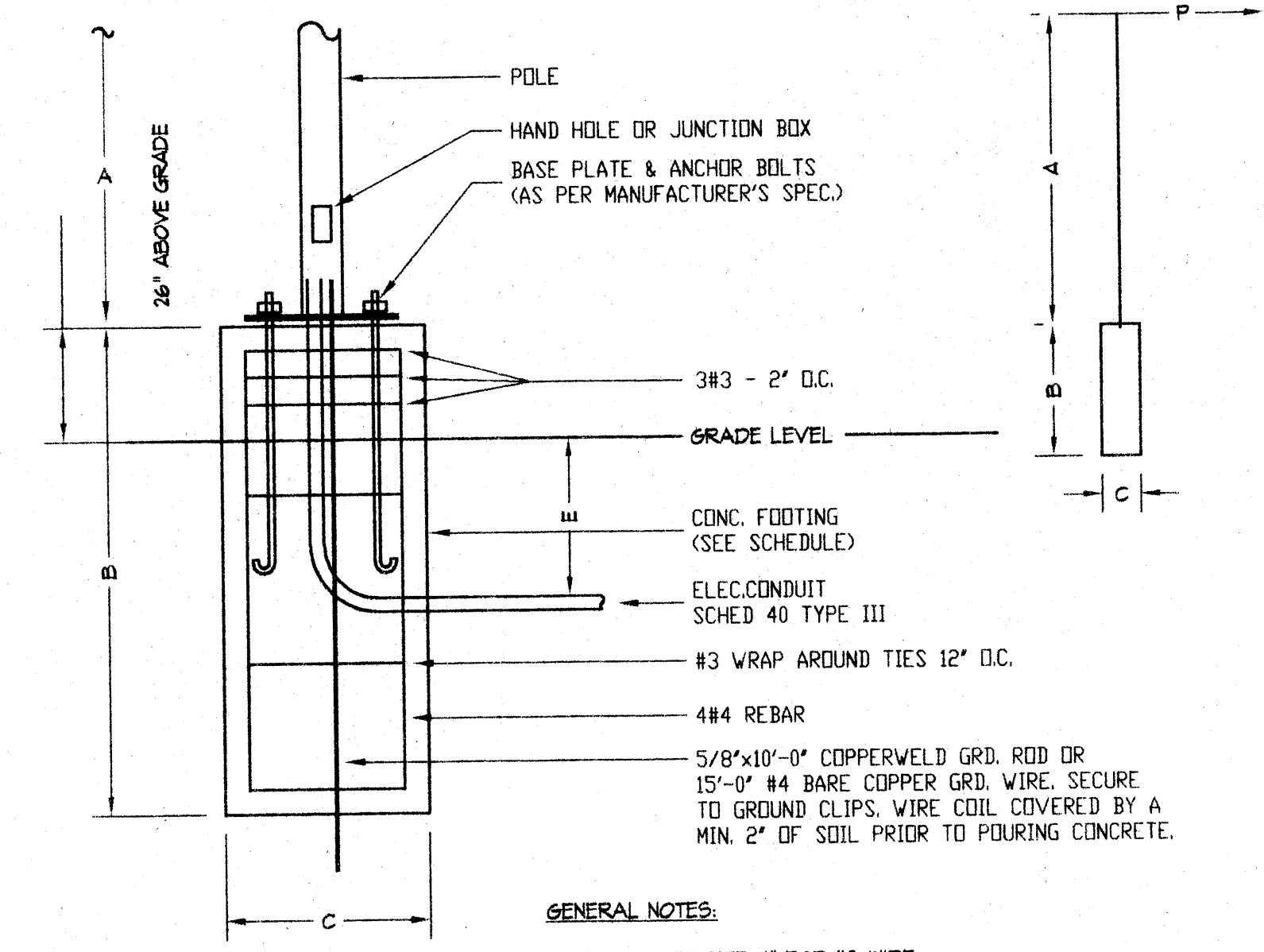


**SHEET NOTES**

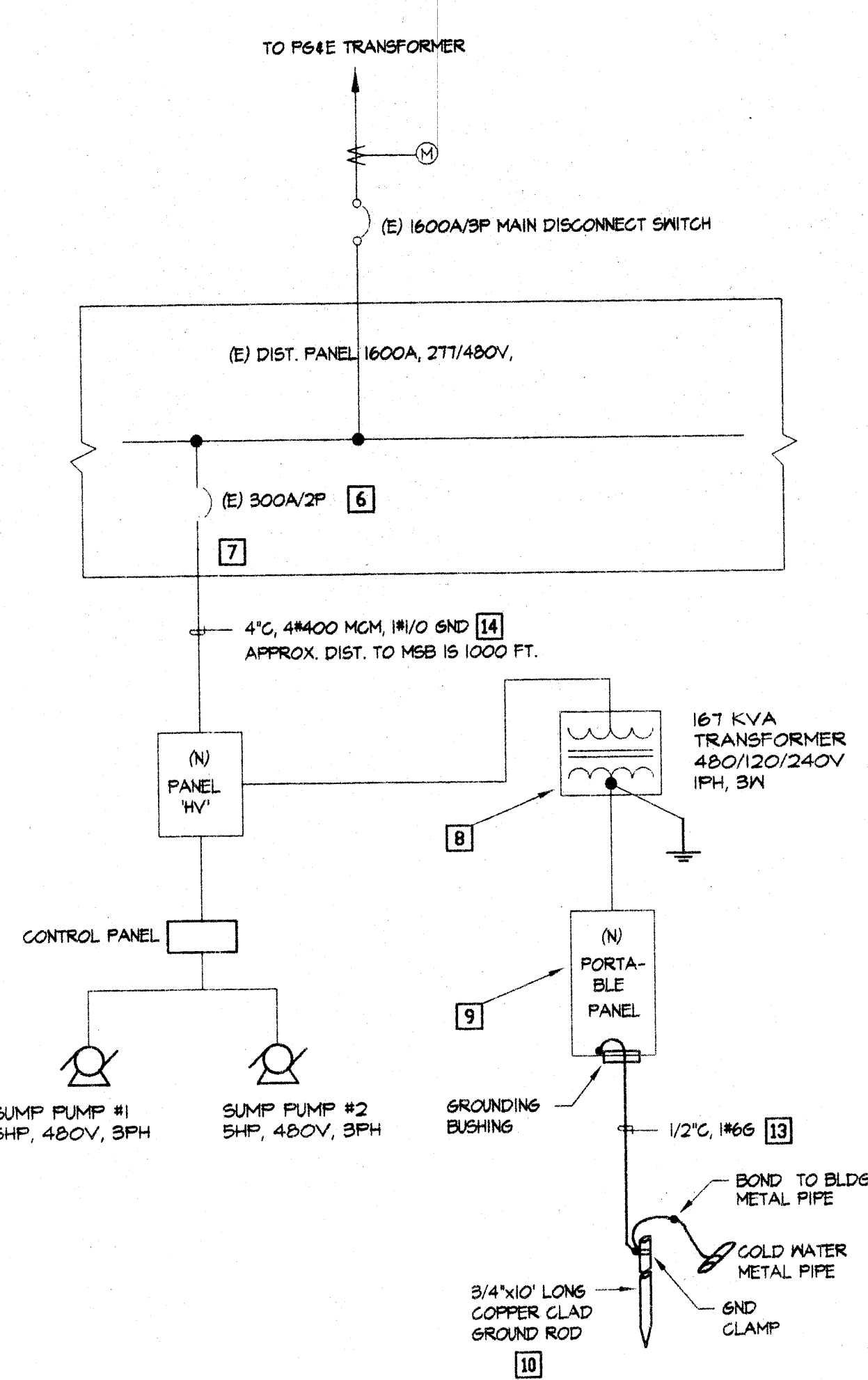
- 1 RUN UNDERGROUND CONDUITS BELOW GRADE AS INDICATED. DEPTH OF CONDUITS SHALL BE PER N.E.C. TABLE 300-5. PROVIDE PVC CONDUITS W/ PRE-FABRICATED 90 DEG. STEEL ELBOWS. WRAP ELBOWS W/ TWO LAYERS OF PLASTIC CONDUIT TAPE.
- 2 1-1/2" C.O. (TEL/DATA), 1" (F.A.) AND 2" (FOR POWER).
- 3 CONCRETE J-BOX SIZE #6 FOR COMM. & FIRE ALARM
- 4 CONCRETE J-BOX SIZE #6 FOR POWER.
- 5 TYPICAL OF 3 PULL BOXES AT EACH LOCATION (I-POWER, I-TEL/DATA, AND I-F.A.). SIZE PER N.E.C. SUBMIT SHOP DRAWINGS OF ALL SIZES FOR REVIEW. PULLBOXES SHALL BE FLUSH WITH GROUND.
- 6 EXISTING CIRCUIT BREAKER, 300 AMP, 3P
- 7 NEW WORK SHALL BE PERFORMED WITHOUT NULLIFYING THE INTEGRITY OF THE DISTRIBUTION PANEL.
- 8 NEMA 3R TRANSFORMER 167KVA, FROM 460/120/240V, 1PH, 3W MOUNT ADJACENT AND CONNECT TO PORTABLE CLASSROOM FIELD VERIFY EXACT LOCATION. INSTALL PER MANUFACTURER RECOMMENDATIONS.
- 9 PANEL FURNISHED AS PART OF PORTABLE CLASSROOM, WIRED BY CONTRACTOR. COORDINATE ALL REQUIREMENTS.
- 10 GROUND ROD 3/4" O x 10'-0" COPPER GLAD STEEL ROD, DRIVEN W/ TOP OF ROD 12" BELOW FINISHED GRADE COMPLETE W/ #6 GND TERMINATIONS SHALL BE HOUSED IN PRE-CAST CONCRETE BOX (CHRISTY #7 BOX WITH FLSD LID. USE UL APPROVED CLAMPS.
- 11 +24" ABOVE FIN. GRADE, PROVIDE 1" C. TO (E) F.A. CONNECTION POINT OF PORTABLE. VERIFY ALL CONDITIONS.
- 12 +24" ABOVE FINISHED-GRADE, LABEL (TEL/DATA). EXTEND EMPTY CONDUITS TO RELATED POINT OF SERVICE OF PORTABLE.
- 13 USE RIGID STEEL CONDUIT FOR GROUND CONDUCTOR INSTALLATION. RUN GROUND CONDUCTOR CONTINUOUSLY FROM PANEL GROUND BUS TO GROUND ROD TO BOND BUILDING METAL FRAME AND COLD WATER METAL PIPE.
- 14 NEW CONDUCTORS & TERMINATION FURNISHED & INSTALLED. INSIDE MSB.
- 15 EXTEND (E) 4" FROM ELECTRIC VAULT TO J-BOX & PANEL HV'. CONTRACTOR TO FIELD VERIFY EXACT ROUTING OF CONDUITS FROM MAIN SWITCHBOARD TO OUTSIDE BLDG. & TO (N) SERVICE POINT.
- 16 ROUTE 6" CONDUIT FOR TEL/DATA & 2" CONDUIT FOR FIRE ALARM.
- 17 NEW TRENCH (SEE DETAIL #5)
- 18 POINT OF CONNECTION (P.O.C.) TO NEW MODULAR CLASSROOM.
- 19 FIRE ALARM J BOX ONLY AS PART OF THE PORTABLE CLASSROOM. PROVIDE REQUIRED FIRE ALARM DEVICES, MAKE COMPLETE CONNECTIONS AND IDENTIFY ON (E) FAC. FIRE ALARM DEVICES SHALL BE COMPATIBLE WITH THE (E) FIRE ALARM SYSTEM.
- 20 (E) FAC. CONTRACTOR TO PERFORM THE FOLLOWING:
  1. ADD A ZONE MODULE. COORDINATE WITH MANUFACTURER.
  2. AT THE END OF THE JOB CONTRACTOR TO ACTIVATE ALL WARNING/EVACUATION DEVICE FOR A MINIMUM OF 5 MIN. TO TEST BATTERY CAPACITY. IF BATTERY CANT HOLD THE ALLOWED TIME, CONTRACTOR TO ADD ADDITIONAL BATTERIES AS REQUIRED. ANY MODIFICATION TO FIRE ALARM PANEL SHALL BE COORDINATED AND CERTIFIED BY EQUIPMENT MANUFACTURER. THIS SHALL BE INCLUDED IN THE CONTRACT.



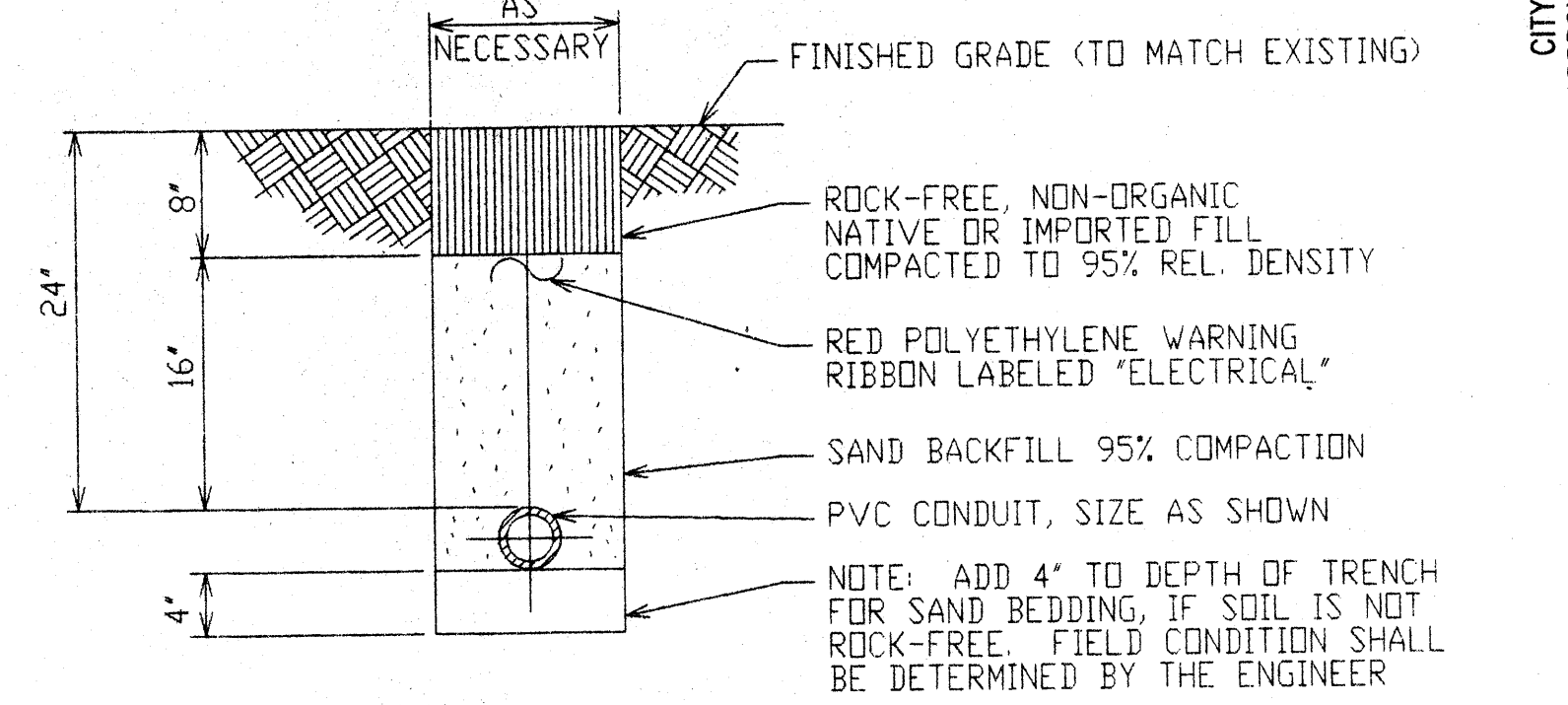
**GENERAL NOTES:**

1. MIN. CONDUIT SIZE: 1" FOR #0 WIRE, 1-1/2" FOR #6 OR LARGER OR AS NOTED.
2. MIN. COVER OVER CONDUIT: 18" UNDER SIDEWALKS, 24" IN PLANTER STRIP, 36" UNDER PAVEMENT.
3. MIN. RADIUS OF BENDS SHALL BE 10".
4. PULL BOXES SHALL BE STD. #3-1/2 OR LON W/ 3/8" BRASS HOLD BOLTS W/ NUT & WASHERS.

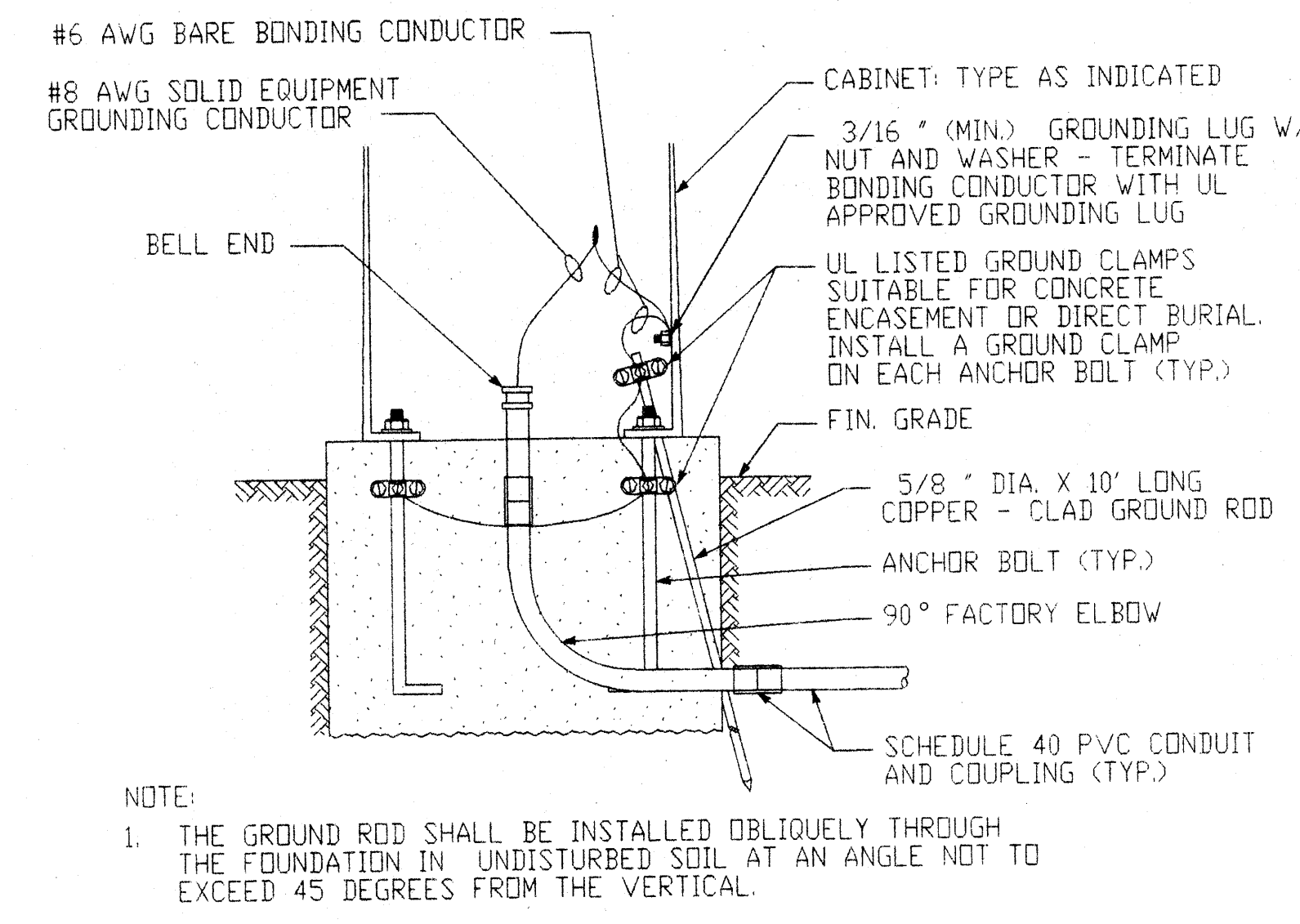
P	A	B	C	E
MAXIMUM WIND PRESSURE	POLE LENGTH	FOOTING DEPTH BELOW GRADE	FOOTING DIAM.	CONDUITS DEPTH
24.8#	0'-0" TO 15'-0"	3'-0"	1'-6"	18" UNDER SIDEWALK
10.5#	15'-1" TO 20'-0"	4'-0"	2'-0"	24" UNDER PLANTSTRIP
11.0-7#	20'-0" TO 25'-0"	5'-0"	2'-0"	30" UNDER PAVEMENT
11.8-4#	25'-1" TO 30'-0"	5'-0"	2'-6"	



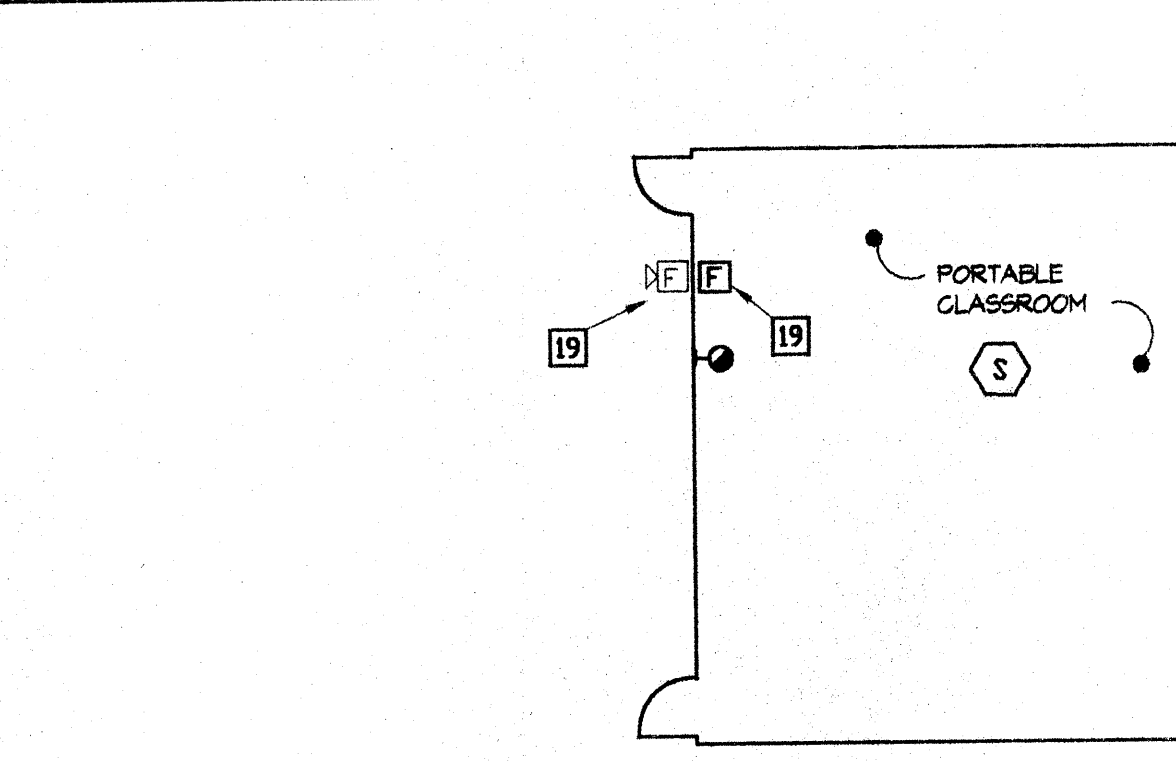
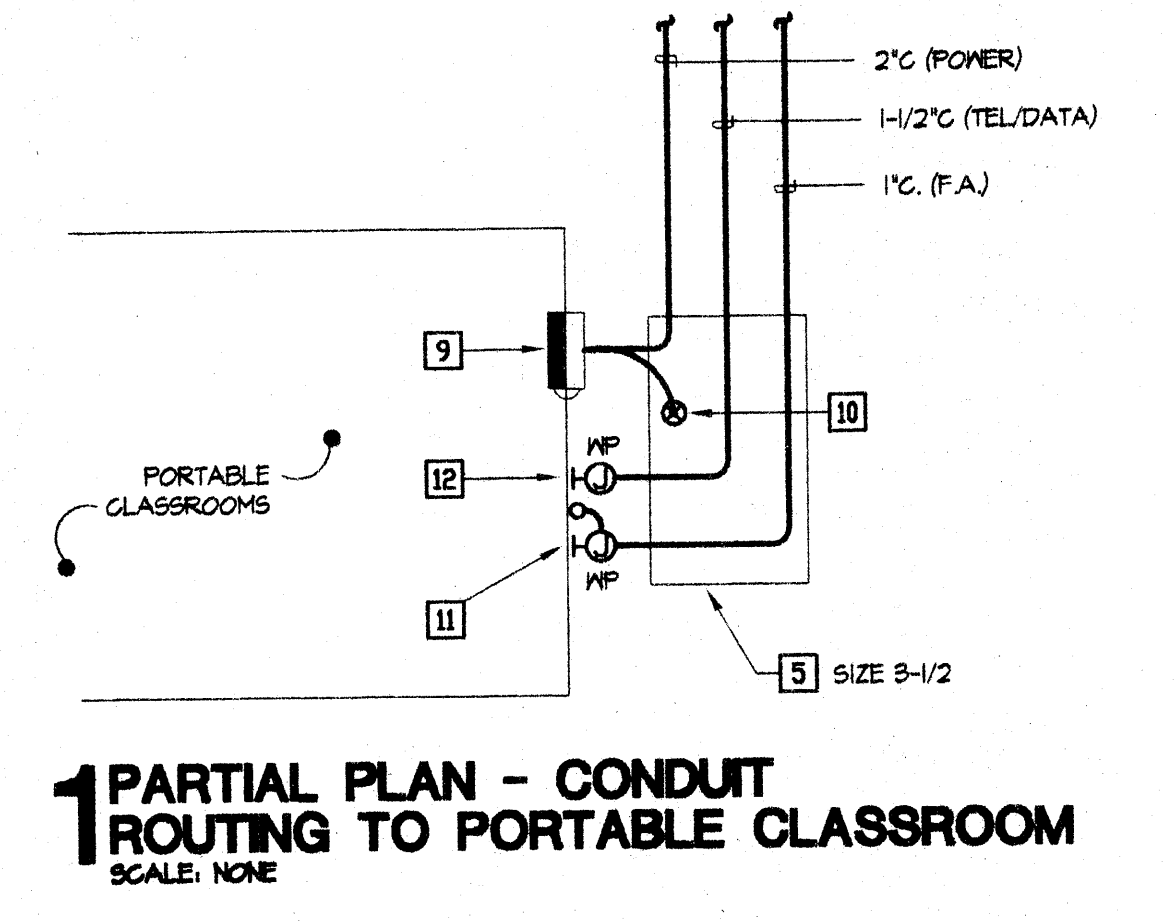
**4 SINGLE LINE DIAGRAM**  
SCALE: SCHEMATIC



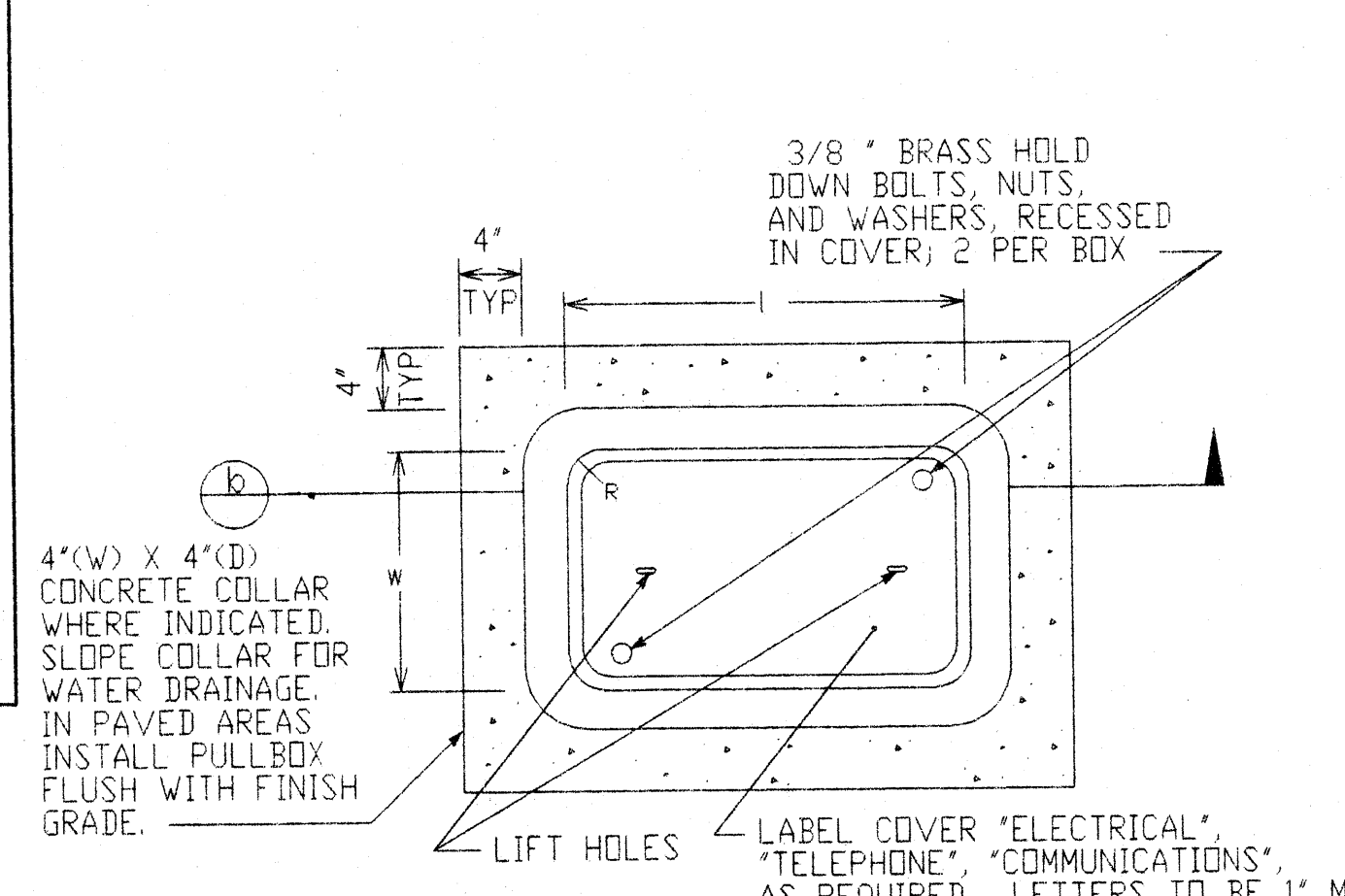
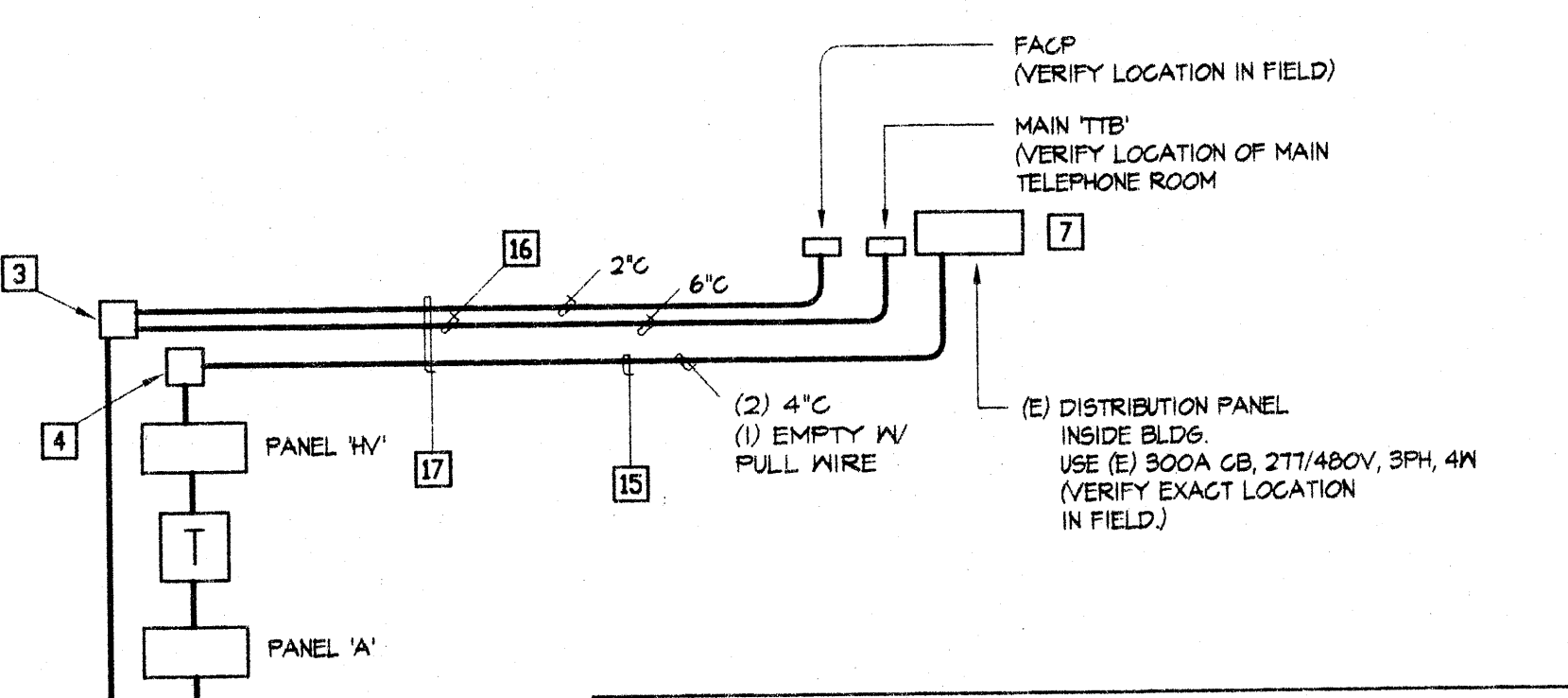
**5 TRENCH DETAIL**  
NO SCALE



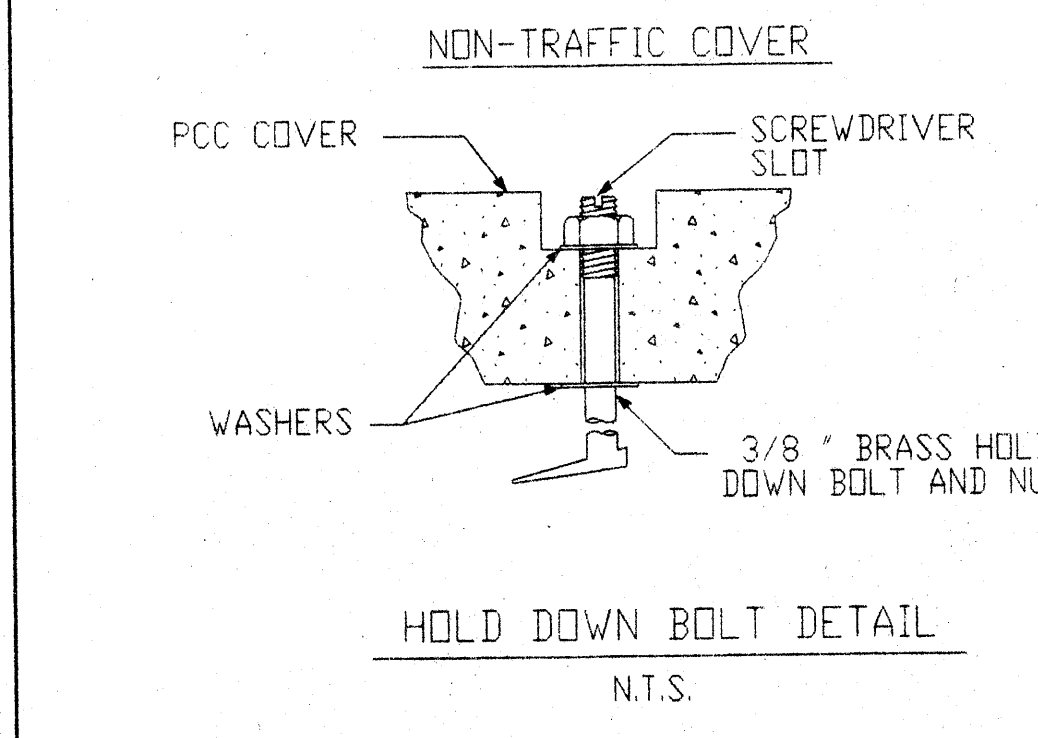
**6 SERVICE PEDESTAL**  
NO SCALE



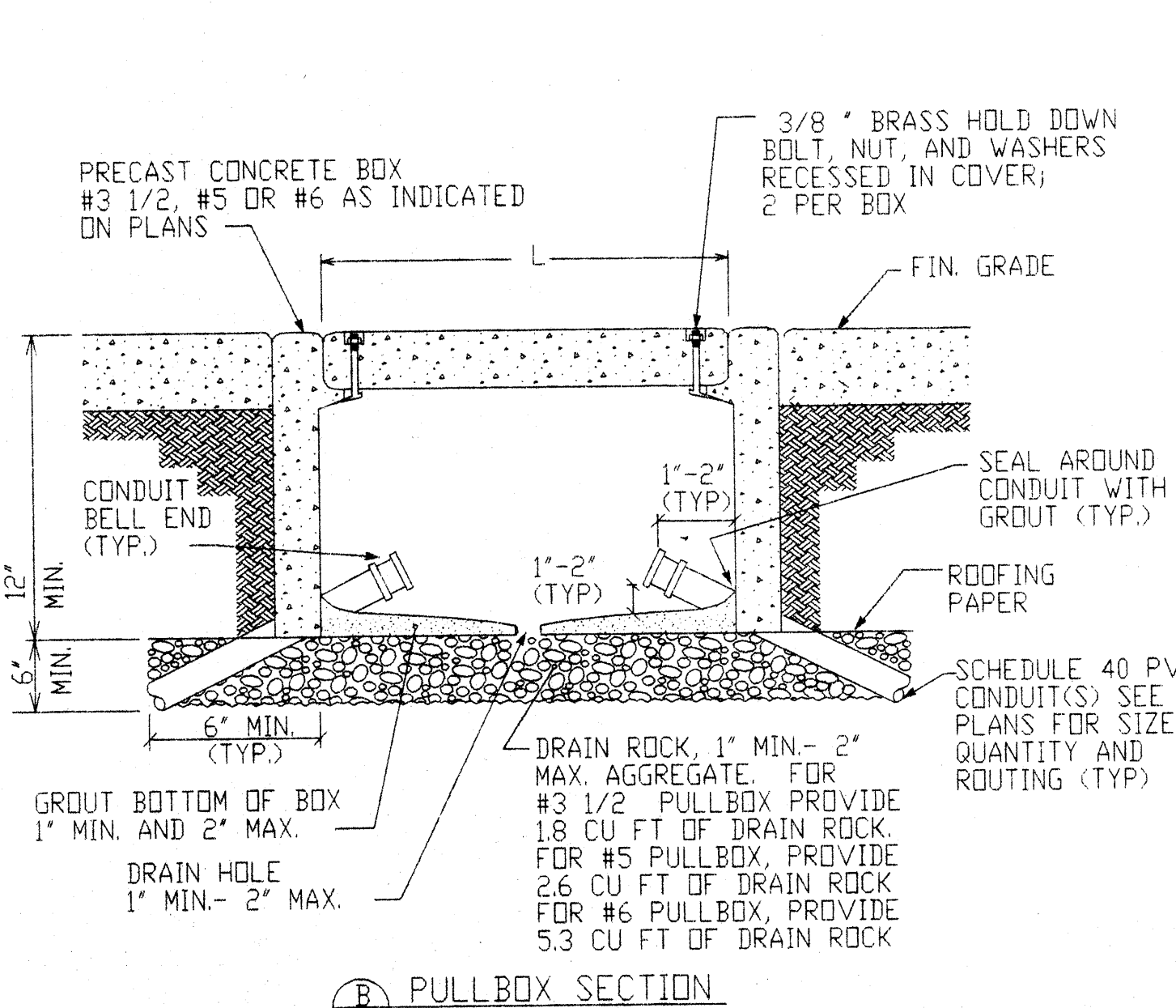
**2 ELECTRICAL DIAGRAM**  
SCALE: SCHEMATIC



**7 CONCRETE PULLBOX DETAIL**  
NO SCALE



- #3 1/2 PULLBOX: L= 15 3/8", W= 10 1/8", R= 1 1/8"
- #5 PULLBOX: L= 23 1/4", W= 13 3/4", R= 1 1/4"
- #6 PULLBOX: L= 30 1/2", W= 17 1/2", R= 1 1/2"



**B PULLBOX SECTION**  
N.T.S.

IDENTIFICATION STAMP  
 DIVISION OF STATE ARCHITECT  
 01-10-2009  
 APPL 01 108409 INCR#1  
 AC A FLS SS  
 DATE DEC 22 2000  
 LICENSED ARCHITECT  
 GENE M. SUGIMURA  
 C 007104  
 REN 3-31-01  
 STATE OF CALIFORNIA

ENGINEERING CONSULTANT • MECH. ELECT. GENERAL CONTRACTOR Lic. #8697981  
 INDUSTRIAL • COMMERCIAL • RESIDENTIAL  
 4070 Nelson Avenue, Suite C  
 Concord, California 94502  
 TEL. #925/609-1660 FAX #925/609-1661

CITY APPROVAL

PREPARED UNDER THE SUPERVISION OF

DAVID EVANS AND ASSOCIATES, INC.  
 3000 EXECUTIVE PARKWAY,  
 SUITE 125  
 SAN RAMON, CALIFORNIA 94583  
 TEL: (925) 867-3380 FAX: (925) 867-3388

SCALE: AS SHOWN  
 DATE: 12-20-00  
 DRAWN BY: LCC  
 ENGINEER: AOC  
 CHECKED BY: AOC  
 PG.

SAN MATEO COUNTY COMMUNITY COLLEGE DISTRICT  
 ELECTRICAL NOTES & DETAILS  
 WEST ED MODULAR BUILDINGS

CANADA COLLEGE REDWOOD CITY CALIFORNIA

ARTURO CABRERA  
 EXPRES 6-30-2001

SHEET NO. E2 OF 2 SHEETS  
 JOB No. SMCC0000-0003