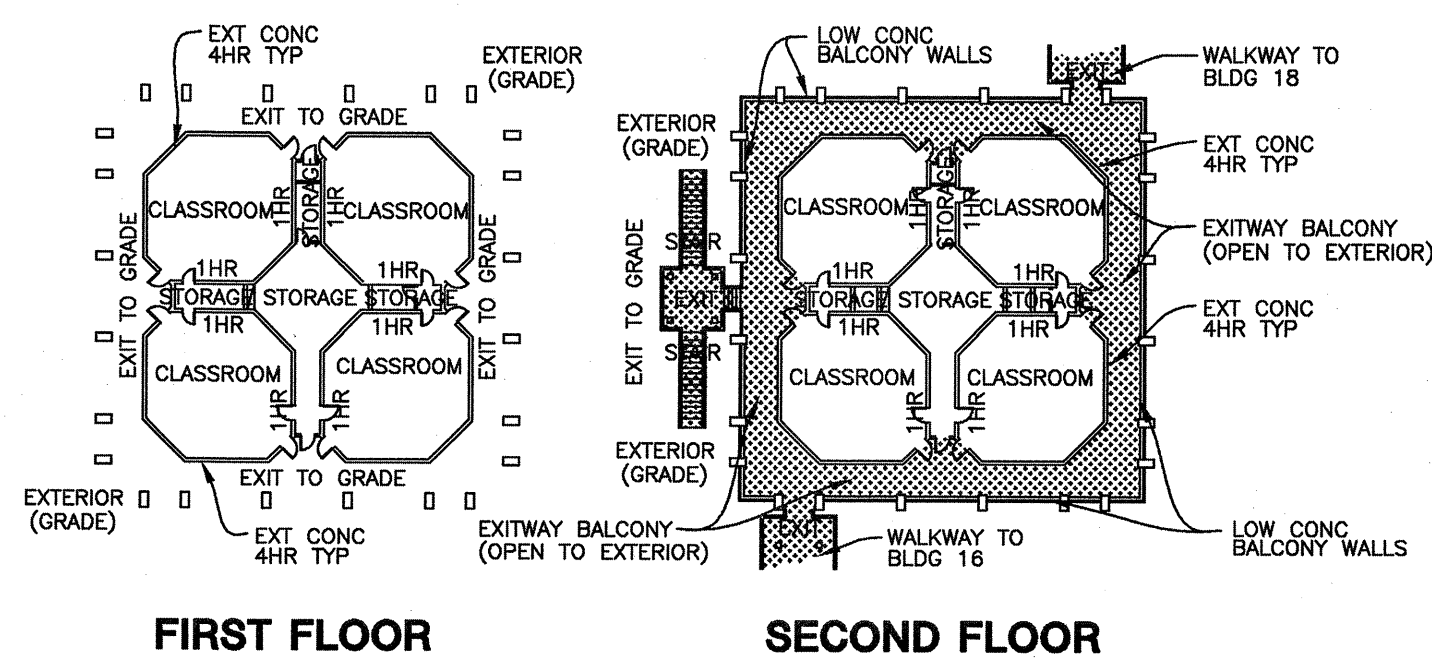
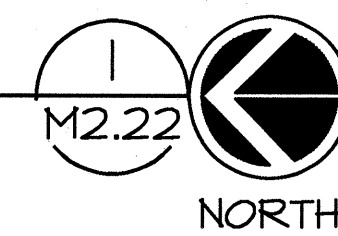
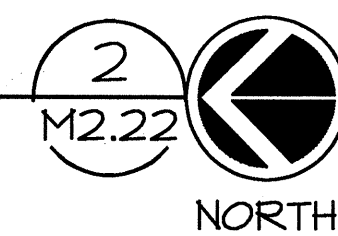


BUILDING 17 MECHANICAL SECOND FLOOR PLAN
SCALE: 1/8" = 1'-0"



BUILDING 17 OVERALL FLOOR PLANS
SCALE: 1" = 40'-0"



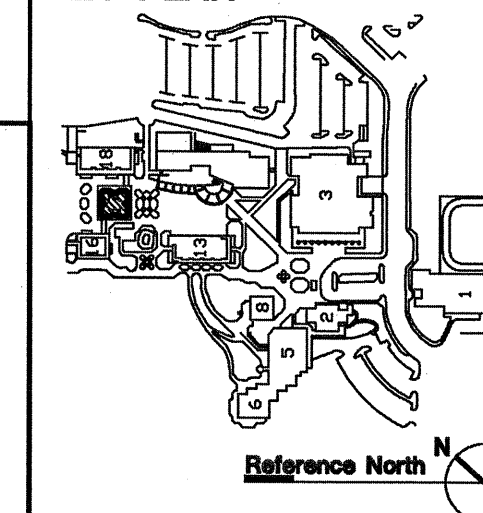
SHEET NOTES

- VERTICAL FAN COIL UNIT ON FLOOR MOUNTED SPRING ISOLATORS. SEE SECTION 1/M3.21 FOR DUCT DETAILS, SEE 5/M5.04 FOR MOUNTING, SEE 1/M6.03 FOR CONTROL, SEE 1/M4.22 FOR PIPING.
- 18" EXHAUST DUCT UP FROM FIRST FLOOR LEVEL BELOW. SEE 1/M2.21 FOR CONTINUATION. 18" DUCT IS TO TIE INTO BOTTOM OF 20" HORIZONTAL DUCT RUN ABOVE.
- ALL DUCTWORK TO BE HELD TIGHT TO STRUCTURE ABOVE.
- 18"x18" (MIN.) WALL LOUVER, SEE ARCHITECTURAL DRAWINGS.
- 36"x18" (MIN.) WALL LOUVER, SEE ARCHITECTURAL DRAWINGS.
- LOUVER TO BE LOCATED AS HIGH AS POSSIBLE. INSTALL 8" DEEP PLENUM ONTO BACK OF LOUVER AND CONNECT 14" DUCT AS SHOWN. DUCTWORK RUNS TIGHT TO UNDERSIDE OF SECOND FLOOR DECK AND MUST OFFSET DOWN TO MEET LOUVER.
- 24"x16" EXHAUST DUCT RISER DOWN FROM ROOF LEVEL ABOVE THROUGH (E) ROOF OPENING. CAP END AND TAP IN BRANCH DUCTING AS SHOWN.
- REFRIGERANT PIPING UP FROM FIRST FLOOR LEVEL BELOW. SEE 1/M2.21 FOR CONTINUATION. EXTEND PIPING UP TO UNDERSIDE OF ROOF DECK THEN EXTEND OVER TO (E) ROOF OPENING.
- REFRIGERANT PIPING UP THROUGH ROOF. SEE 1/M2.23 FOR CONTINUATION.
- TWO 14" DUCT STACKED VERTICALLY, HOLD BOTH DUCTS AS HIGH AS POSSIBLE.
- OFFSET DUCT UP TO UNDERSIDE OF STRUCTURE.
- (E) WALL OPENING TO BE ENLARGED TO ACCOMMODATE NEW DUCTWORK. SEE STRUCTURAL DRAWINGS. COORDINATE OPENING SIZE REQUIREMENTS WITH GENERAL CONTRACTOR.
- NEW DUCTWORK TO EXTEND THROUGH (E) WALL OPENING.

MECHANICAL / STRUCTURAL COORDINATION NOTES

- MECHANICAL CONTRACTOR IS TO DETERMINE ALL ROOF AND WALL OPENING SIZES REQUIRED FOR THE MECHANICAL SYSTEMS. THIS INFORMATION IS TO BE COORDINATED WITH THE GENERAL CONTRACTOR TO ENSURE NO CONFLICTS OR MISSED OPENINGS OCCUR.
- MECHANICAL CONTRACTOR IS TO DETERMINE ALL ROOF AND HOUSEKEEPING PAD DIMENSIONS BASED ON THE ACTUAL EQUIPMENT BEING INSTALLED, INCLUDING REQUIRED EDGE DISTANCE CLEARANCE FOR ANCHOR BOLTS.

KEY PLAN



accu engineered systems
1133 ALADDIN AVE
SAN LEANDRO, CALIFORNIA 94577
(510) 346-4300

Job Number: 626403
Filename: RC
Drawn By: RISE
Project Mgr: 86519
District Contract #

RECORD DRAWING

DATE: 02-01-07
Contractor's Signature

noll & tam
architects and planners

729 Heinz Avenue
Berkeley, CA 94710
510.649.8295
fax 510.649.3008

McCracken & Woodman, Inc.
355 Grand Ave.
Oakland, CA 94610
Tel: (510) 763-4891
Fax: (510) 763-0619



CAÑADA COLLEGE
BUILDING 16, 17, 18
RENOVATION

SMCCCD
3401 CSM Drive
San Mateo, CA 94402
Cañada College
4200 Farm Hills Blvd.
Redwood City, CA 94061

SHEET TITLE
BUILDING 17 MECHANICAL SECOND FLOOR PLAN

REVISIONS		
NO.	DATE	DESCRIPTION
1	08/11/06	ADDENDUM NO. 1 BLDG 17 MODERNIZATION
2	02/01/07	RECORD SET

DATE	
DRAWN	JP
CHECKED	BC
SCALE	1/8" = 1'-0"
N&T JOB NO.:	
SHEET NUMBER	17

M2.22