

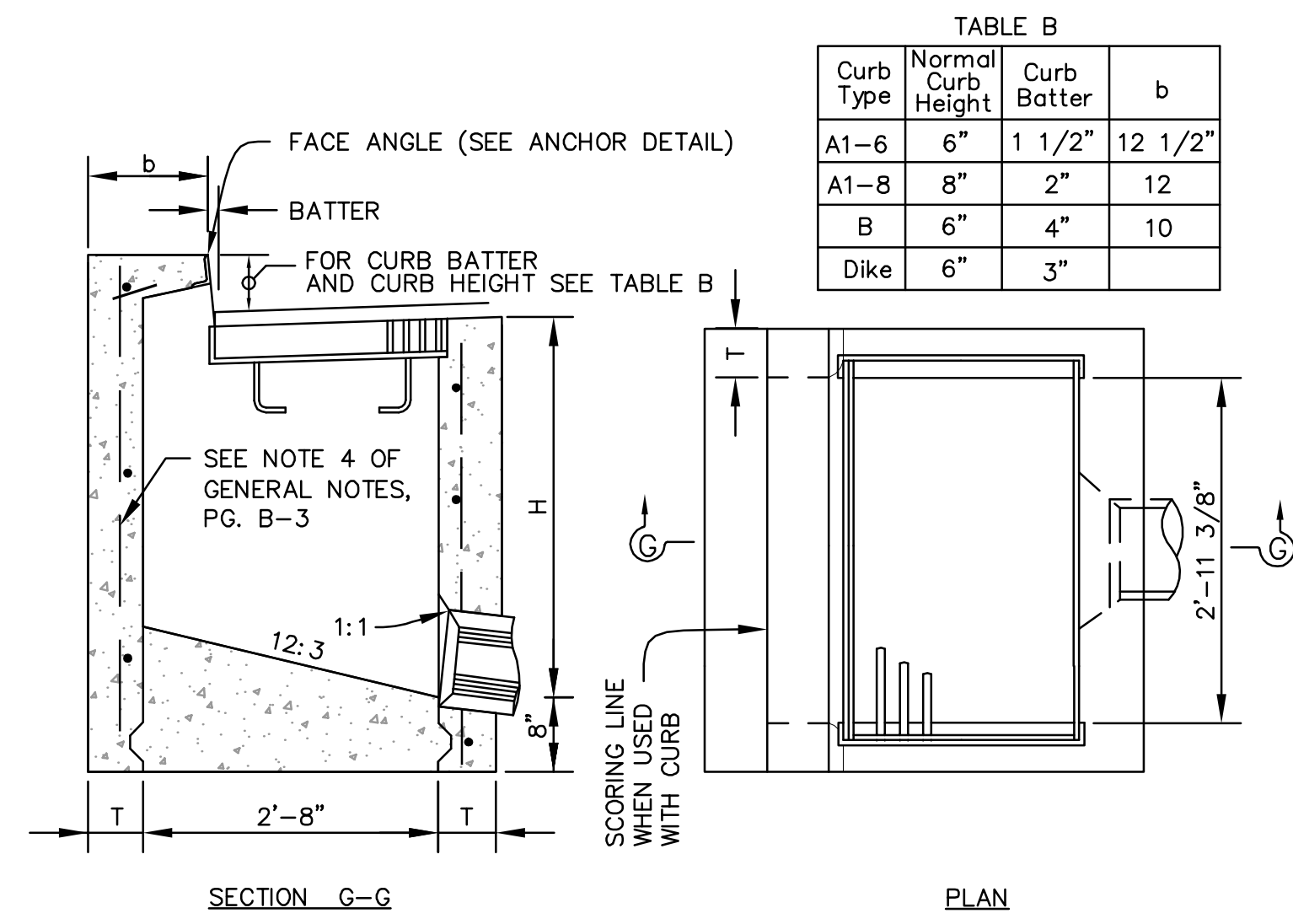
Revision	Description	Date

Revision	Description	Date
1	DSN SUBMITTAL	19 SEPT 2008
2	DSN FINAL	09 APRIL 2009
3	PROJECT RECORD DRAWING	JUNE 2011

Job No.	27082.30
Date	02 APRIL 2009
Drawn by	MD, JT
Checked by	RH
Scale	AS SHOWN

**CONSTRUCTION DETAILS**

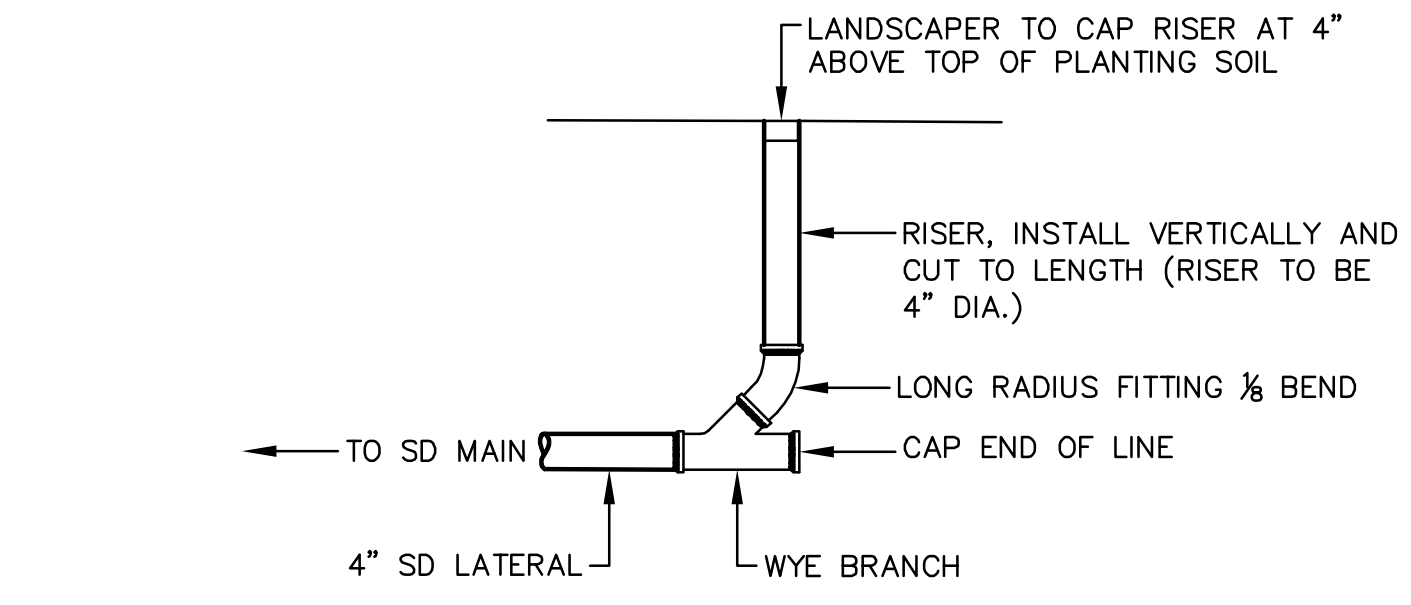
**C8.05**



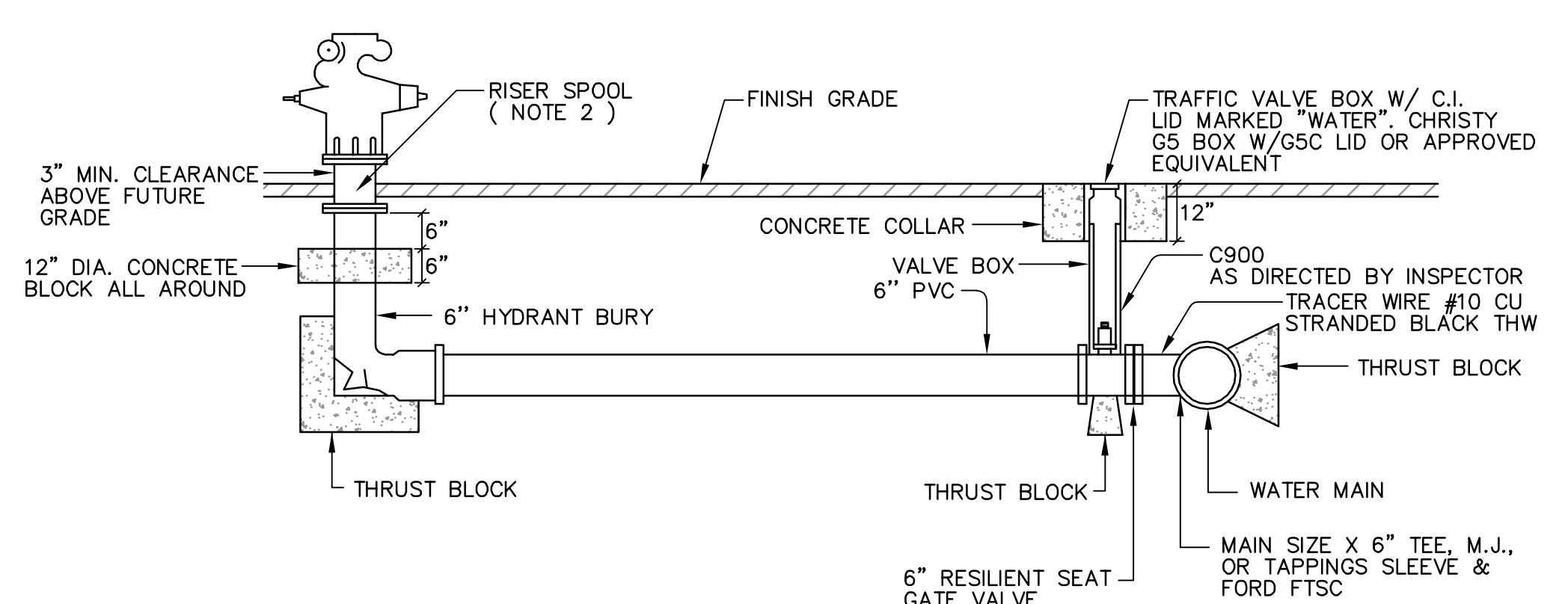
CATCH BASIN QUANTITY TABLE

GO	H=3'-0" TO 8'-0" (T=6")		H=8'-1" TO 20'-0" (T=8")	
	'H=3'-0"	ADDITIONAL P.C.C. PER FT. (C.Y.)	H=8'-1"	ADDITIONAL P.C.C. PER FT. (C.Y.)
GO	1.24	0.245	3.39	0.346

TABLE BASED ON 8" FLOOR SLAB, NO DEDUCTION FOR PIPE OPENINGS, AND CURB TYPE GIVING HIGHEST QUANTITY OF CONCRETE. NO DEDUCTIONS OR ADJUSTMENTS ARE TO BE MADE TO THESE QUANTITIES BECAUSE OF PIPE OPENINGS, DIFFERENT FLOOR ALTERNATIVES OR DIFFERENT CURB TYPE.

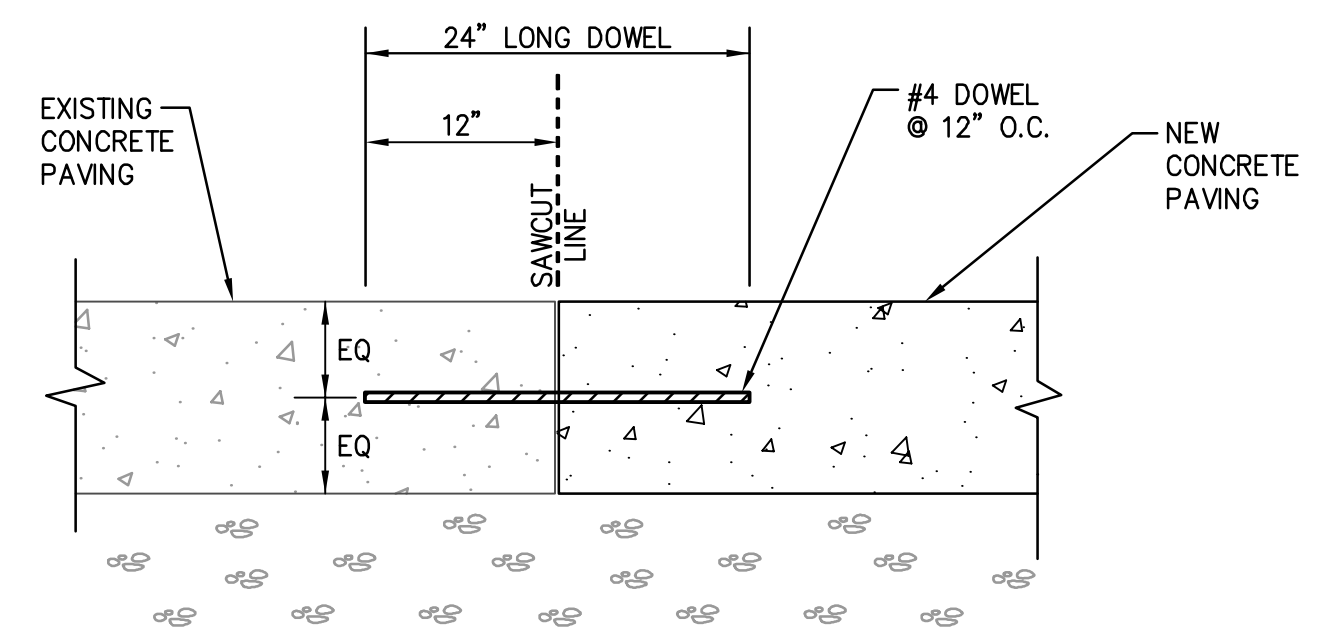


**1** **PLANTER DRAINAGE CONNECTION**  
NTS

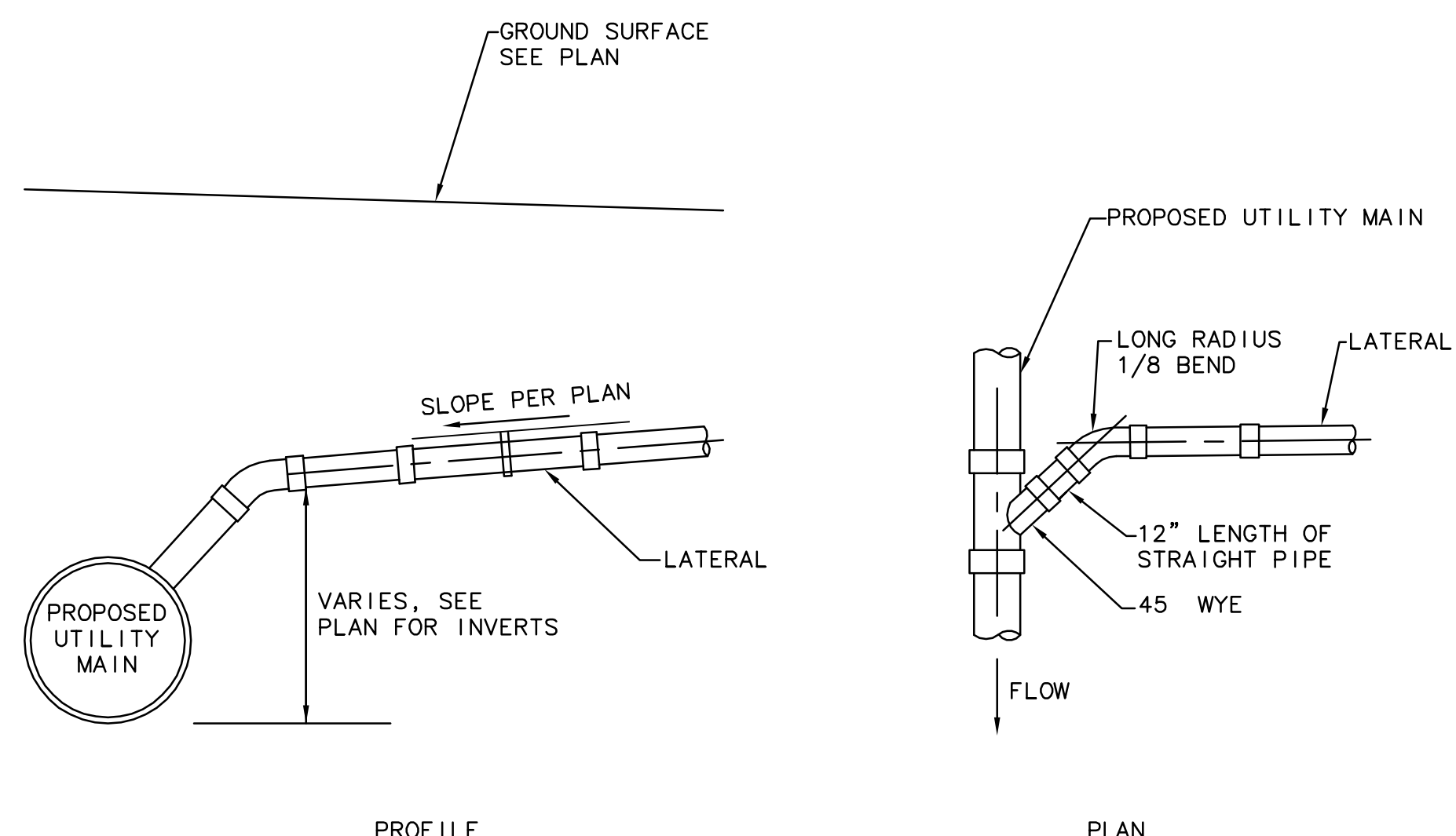


- NOTES:
- PROVIDE TWO 2-1/2 INCH AND ONE 4-1/2 INCH OUTLETS, WITH A 6-INCH NOMINAL INSIDE DIAMETER INLET. HYDRANT SHALL HAVE A WORKING PRESSURE OF 250 PSI AND SHALL CONFORM TO ANWA C502 OR C503, AND BE UL LISTED AND FM APPROVED. PROVIDE HYDRANTS OF ONE MANUFACTURER. CLOW MODEL 960 SERIES OR APPROVED EQUIVALENT, SUBJECT TO APPROVAL OF THE DISTRICT AND FIRE MARSHAL.
  - RISER SPOOLS WHEN USED SHALL BE THE BREAK OFF TYPE. USE RISER WITH SNAP RING 6" MINIMUM IN LENGTH. THE BOLTS ATTACHING HYDRANT TO BURY AND SPOOL SHALL BE STAINLESS STEEL OF THE BREAK-OFF TYPE, HEX HEAD, HEAVY AMERICAN STANDARD. COAT ALL BURIED METALLIC PARTS WITH BITUMASTIC 50 BY KOPPERS. NUTS SHALL BE DOWN.
  - HYDRANTS SHALL BE LOCATED AS SHOWN ON PLANS APPROVED BY ENGINEER.
  - FIRE HYDRANT ASSEMBLIES SHALL BE IN CONFORMANCE WITH PROJECT SPECIFICATIONS.

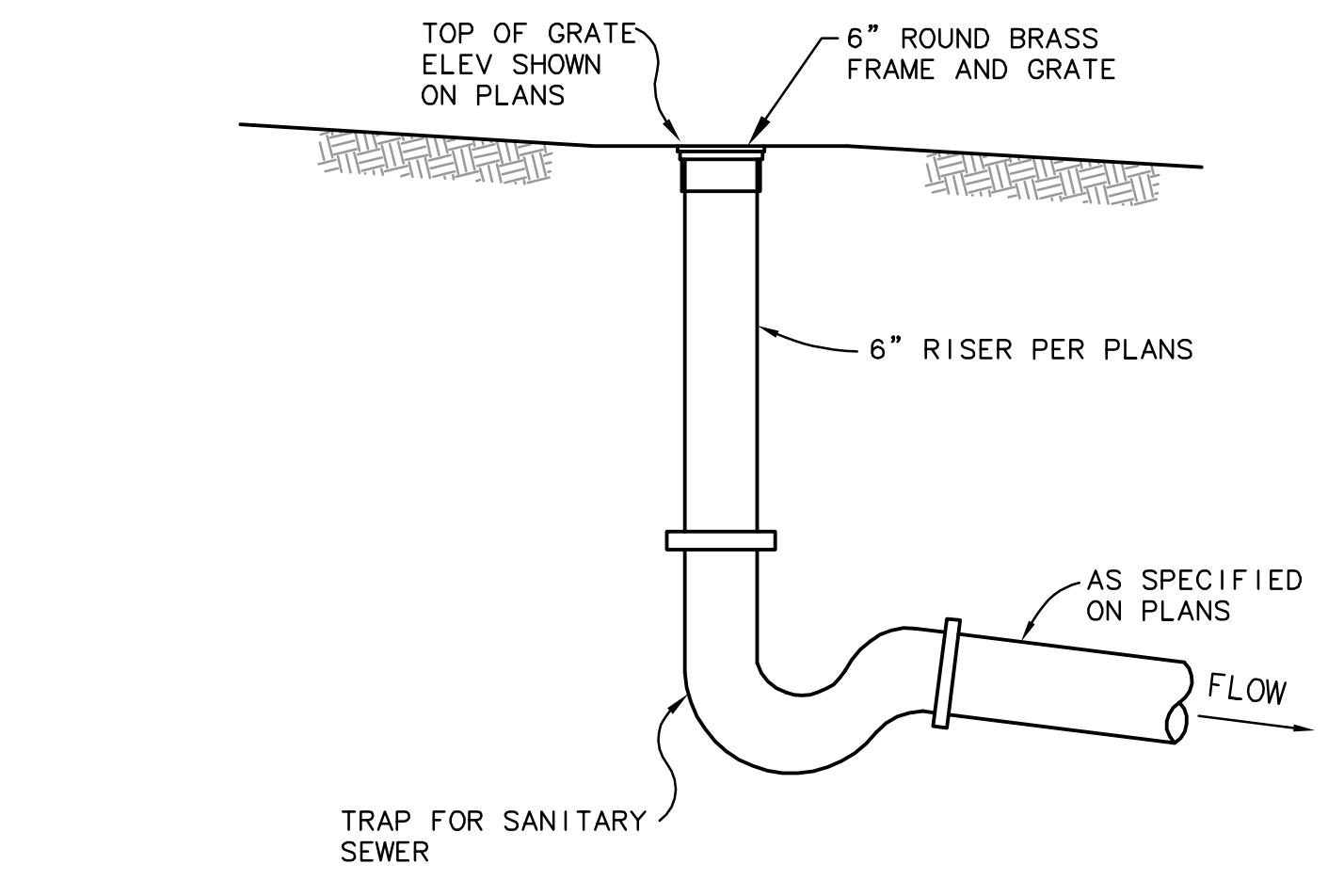
**3** **FIRE HYDRANT ASSEMBLY**  
NTS



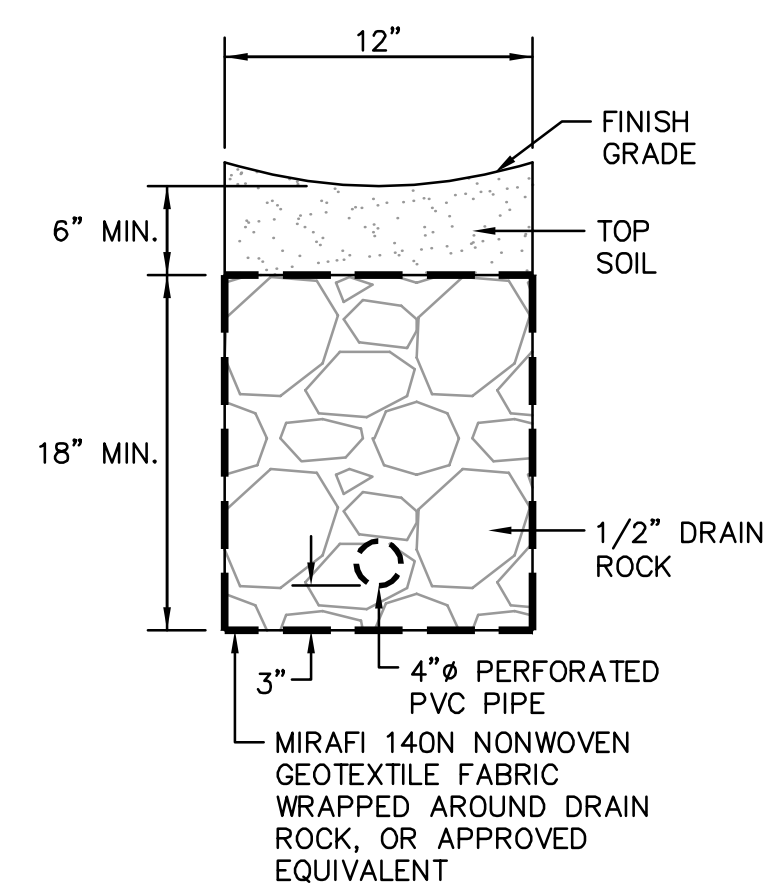
**4** **PAVEMENT CONFORM NEW CONCRETE TO EXISTING CONCRETE**  
NTS



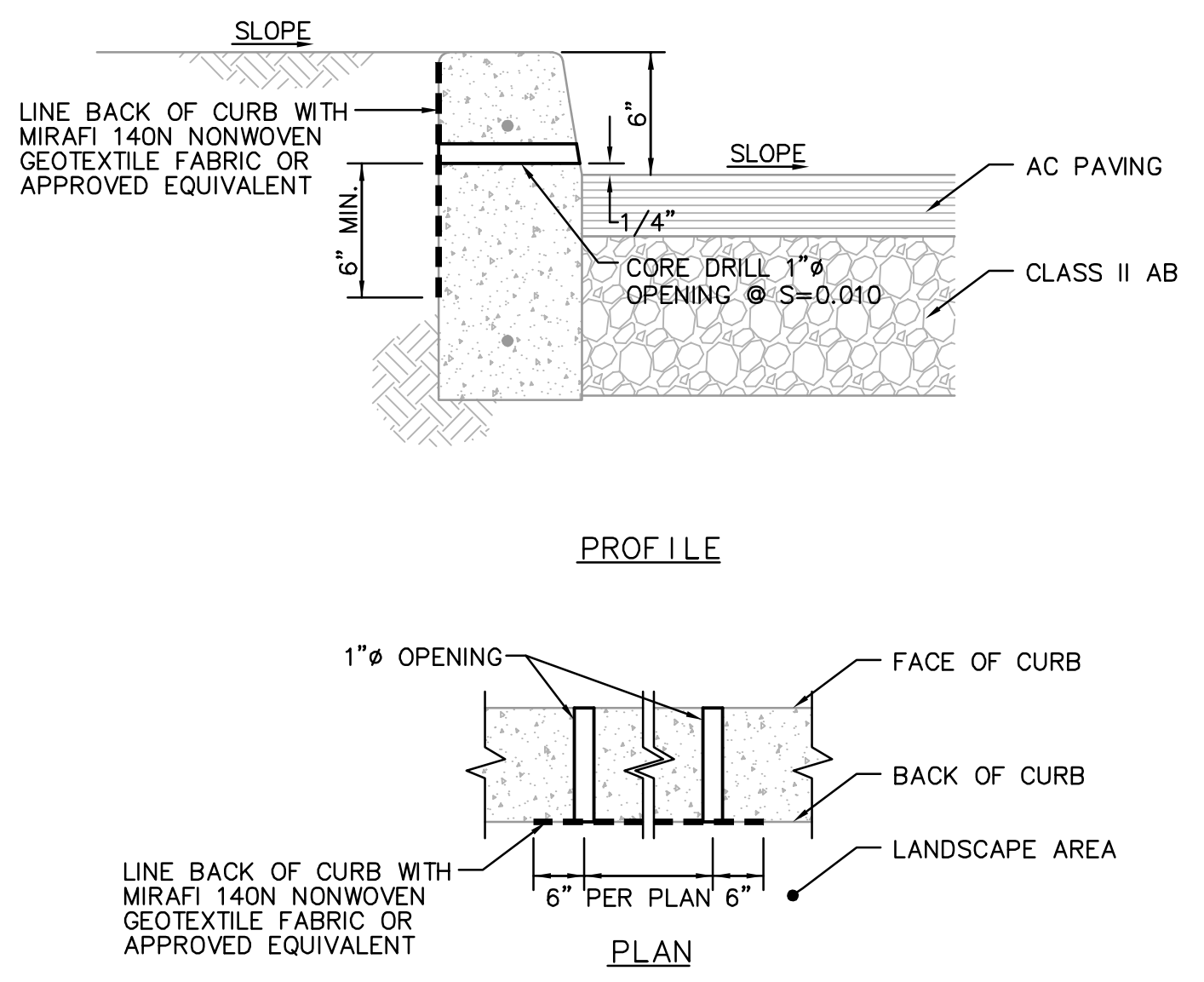
**5** **LATERAL CONNECTION TO MAIN**  
NTS



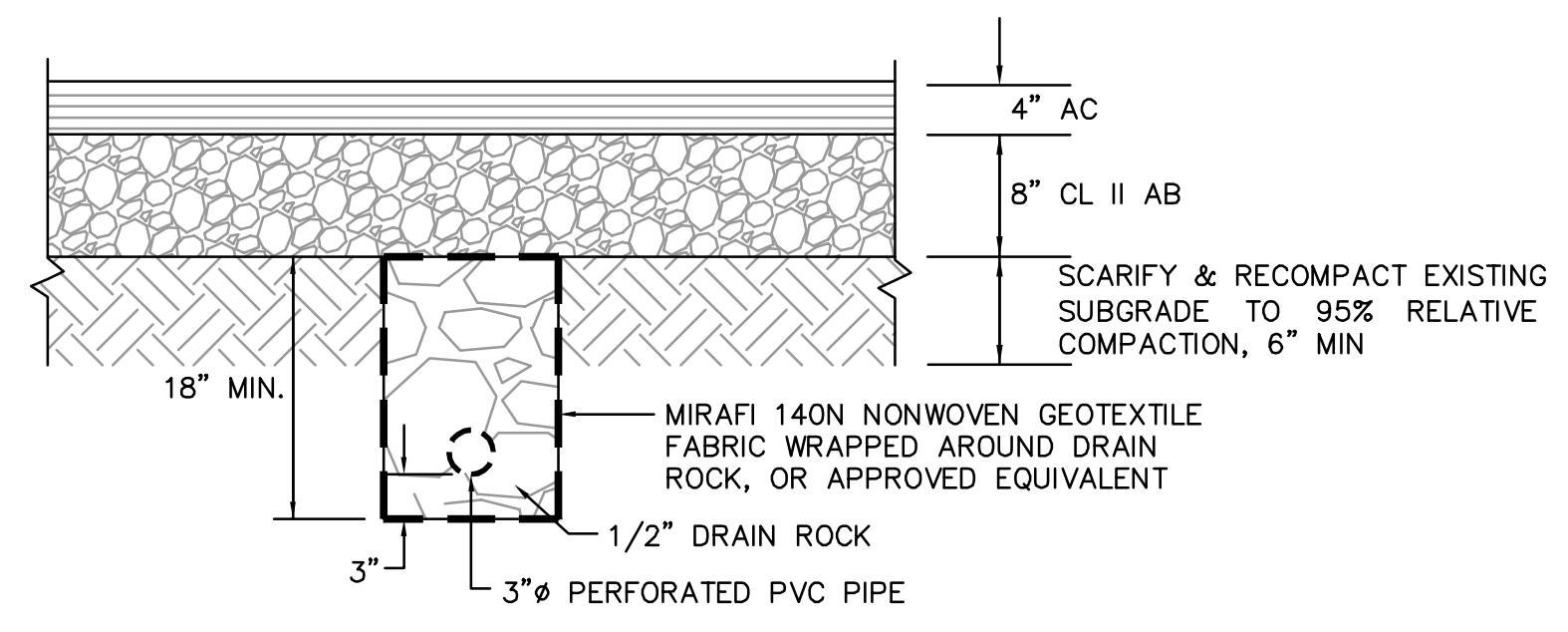
**6** **SANITARY SEWER AREA DRAIN WITH TRAP**  
NTS



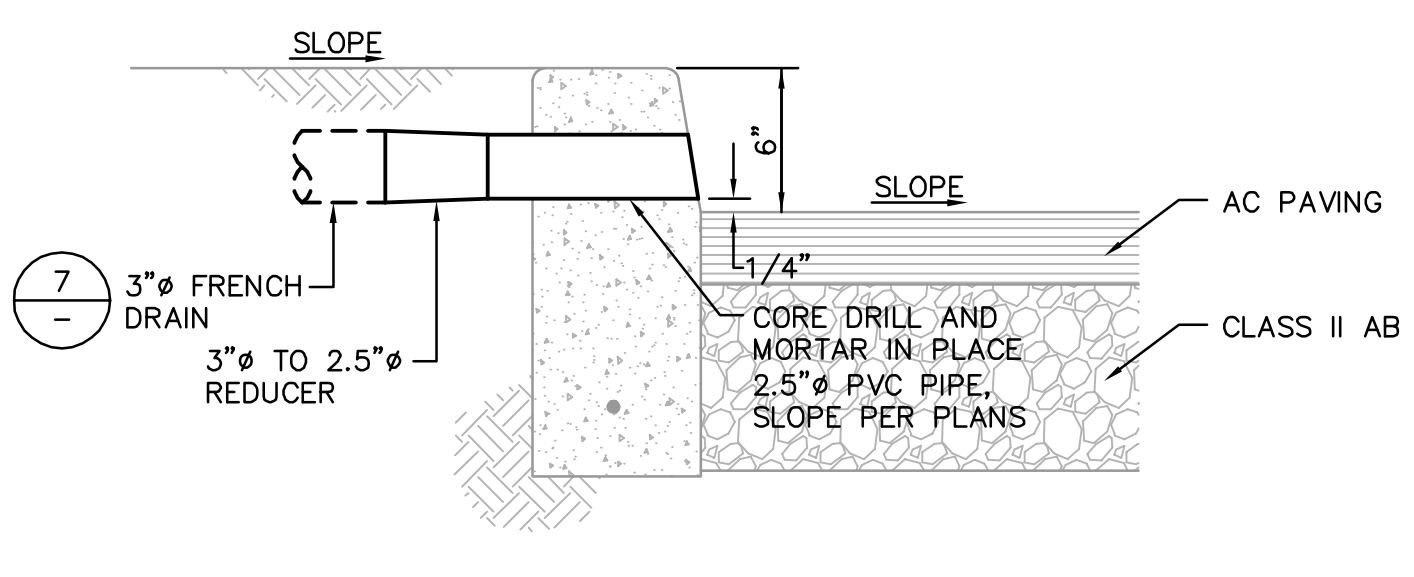
**7** **FRENCH DRAIN DETAIL**  
NTS



**8** **1" CURB THRU DRAIN DETAIL**  
NTS



**9** **PAVEMENT SUBDRAIN DETAIL**  
NTS



**10** **3" DISCHARGE DETAIL**  
NTS

**RECORD DRAWINGS**  
THESE RECORD DOCUMENTS HAVE BEEN PREPARED BASED ON INFORMATION PROVIDED BY OTHERS. BKF ENGINEERS HAS NOT VERIFIED THE ACCURACY AND/OR COMPLETENESS OF THIS INFORMATION AND SHALL NOT BE RESPONSIBLE FOR ANY ERRORS OR OMISSIONS THAT MAY BE INCORPORATED HEREIN AS A RESULT. BKF ENGINEERS DOES NOT ASSUME ANY RESPONSIBILITY FOR THE FIELD MODIFICATIONS TO THE PLANS.  
BY: BKF ENGINEERS DATE: JUNE 2011