



IDENTIFICATION STAMP  
 DIV. OF THE STATE ARCHITECT  
 OFFICE OF REGULATION SERVICE

APPL. #: 01-110097

AC: \_\_\_\_\_ FLS: \_\_\_\_\_ SS: \_\_\_\_\_

DATE: \_\_\_\_\_

FILE NUMBER: \_\_\_\_\_

This set of other project documents and all their contents and design incorporated herein are the property of LPA, Inc. (LPA) and cannot be further used in whole or in part for any project or purpose without the express written consent of the undersigned. LPA hereby grants permission to the recipient of these documents to reproduce or modify them (reproduce) in any form for use in connection with the project for which they were prepared, provided that the recipient acknowledges the source of the documents and that the recipient indemnifies and holds LPA and LPA's Consultants harmless from any liability arising directly or indirectly from project documents. These documents shall be the property of LPA and LPA's Consultants and shall remain their property. LPA and LPA's Consultants shall not be responsible for any discrepancies between project documents and the existing conditions.

© Copyright 2008

College of San Mateo  
 Site Package  
 San Mateo, CA

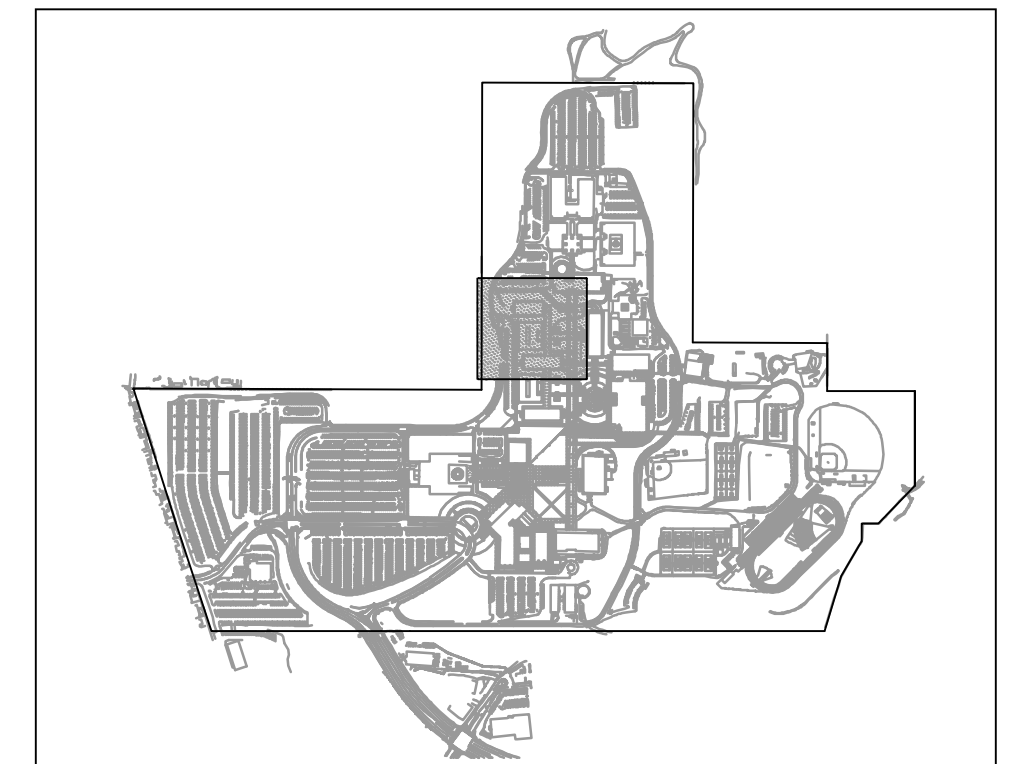
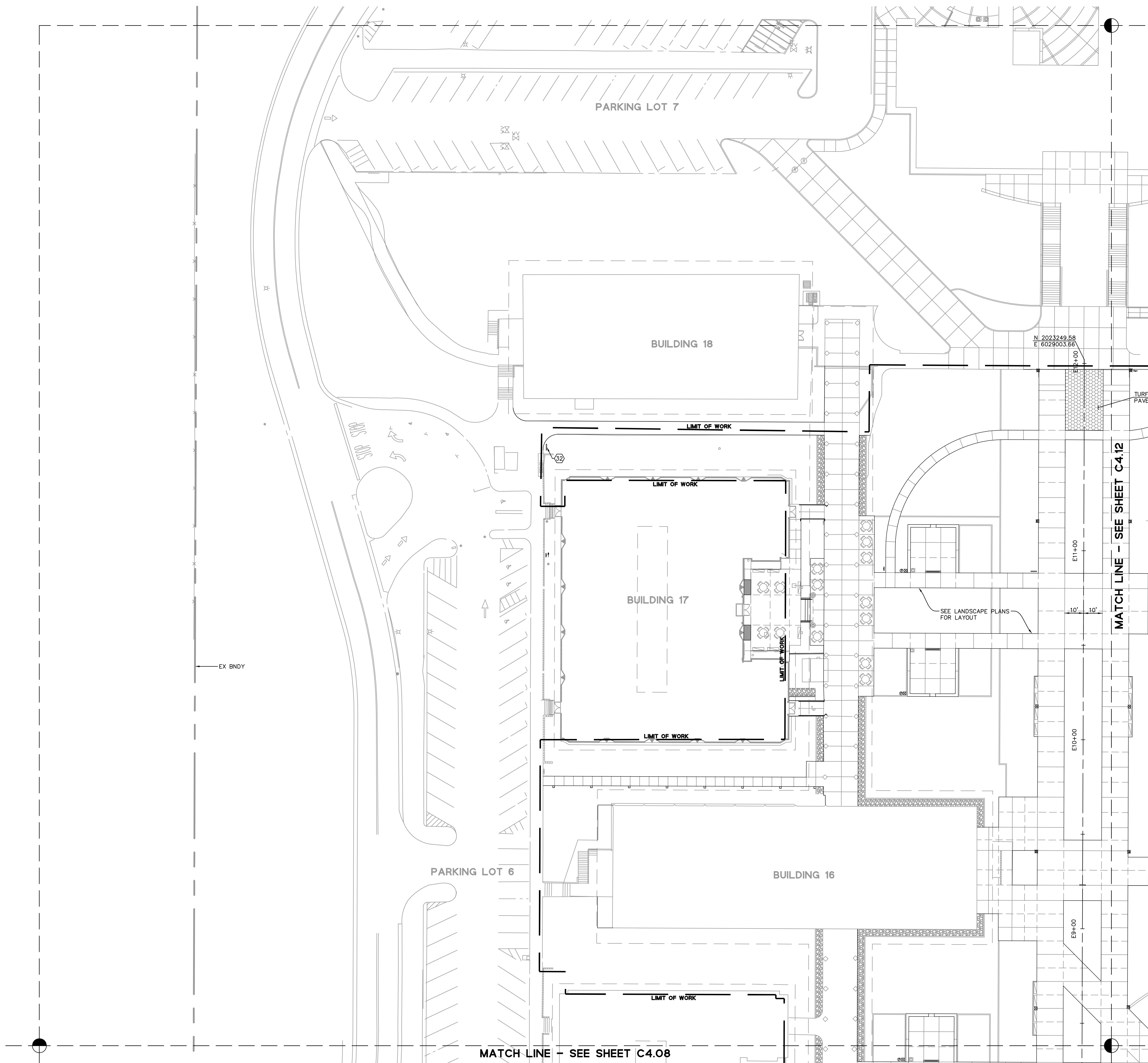
Developed for  
 San Mateo County Community College District

Revision	Description	Date
01	DSN SUBMITTAL	19 SEPT 2008
02	DSN FINAL	09 APRIL 2009
03	PROJECT RECORD DRAWING	JUNE 2011

Job No.	27082.30
Date	02 APRIL 2009
Drawn by	MD, JT
Checked by	RH
Scale	1"=20'

**HORIZONTAL CONTROL PLAN**

**C4.11**



KEYMAP

**NOTES**

- SEE SHEET C4.01 FOR LINE & CURVE TABLE, AND HORIZONTAL CONTROL NOTES.

**MARKING, SIGNING, & STRIPING LEGEND**

SYMBOL	DESCRIPTION
1	LANE LINE STRIPING, CALTRANS DETAIL 13 PER STANDARD PLAN A20A
2	CHEVRON MARKING PER SEC. 38.101(CA) OF CALIFORNIA MUTCD
3	TYPE IV (L) ARROW PER CALTRANS STANDARD PLAN A24A
4	TYPE IV (R) ARROW PER CALTRANS STANDARD PLAN A24A
5	"PED XING" LETTERING (6" TALL LETTERS)
6	R59 (RT) SIGN WITH "RIGHT TURN ONLY"
7	"ONE-WAY" SIGN (R6-1)
8	STOP SIGN (R1-1)
9	R26(S)(CA) - "NO STOPPING ANYTIME" - SEE NOTES 4 & 6
10	BLUE REFLECTIVE MARKER
11	DETAIL 38, CHANNELIZING LINE PER STANDARD PLAN A200
12	THRU ARROW PER CALTRANS STANDARD PLAN A24A
13	"BUSES ONLY" SIGN
14	TYPE VII (R) ARROW PER CALTRANS STANDARD PLAN A24A (THRU/RIGHT TURN COMBINATION)
15	"VAN ACCESSIBLE" SIGNAGE, SEE DETAIL 1 ON SHEET C8.02
16	CA TYPE K-1 (OM2-1H) OBJECT MARKER WITH R4-7 "KEEP RIGHT" SIGN.
17	ACCESSIBLE STALL SIGN, SEE DETAIL 1 ON SHEET C8.02
18	4 INCH DIAGONAL STRIPING AT 36" O.C., SEE DETAIL 1 ON SHEET C8.02
19	4 INCH WHITE STRIPING FOR PARKING STALLS
20	TOW AWAY SIGNAGE, SEE DETAIL 1 ON SHEET C8.02
21	STOP BAR (12" WHITE STRIPING)
22	CROSSWALK (12" WHITE PAINT; 6' WIDE MINIMUM)
23	"NO PARKING" SIGN
24	"STOP" LETTERING (6" TALL LETTERS)
25	"YIELD" LETTERING (6" TALL LETTERS)
26	"NO PARKING" LETTERING (12" TALL LETTERS)
27	"LOADING ZONE" LETTERING (12" TALL LETTERS)
28	INTERNATIONAL SYMBOL OF ACCESSIBILITY - SEE DETAIL 1 ON SHEET C8.02
29	PERMIT PARKING SIGN - COORDINATE WITH SMCCCD
30	"BUSES ONLY" LETTERING (2.5' TALL LETTERS)
31	DIRECTIONAL SIGNAGE - SEE LANDSCAPE PLANS
32	CAMPUS MAP DIRECTORY - SEE LANDSCAPE PLANS
33	"STOP AHEAD" SIGN
34	"ONE WAY - DO NOT ENTER" SIGN
35	4 INCH WHITE DIAGONAL STRIPING AT 36" O.C.
36	"ACCESSIBLE DROP OFF/LOADING ZONE" LETTERING (2.5' TALL LETTERS)

**RECORD DRAWINGS**

THESE RECORD DOCUMENTS HAVE BEEN PREPARED BASED ON INFORMATION PROVIDED BY OTHERS. BKF ENGINEERS HAS NOT VERIFIED THE ACCURACY AND/OR COMPLETENESS OF THIS INFORMATION AND SHALL NOT BE RESPONSIBLE FOR ANY ERRORS OR OMISSIONS THAT MAY BE INCORPORATED HEREIN AS A RESULT. BKF ENGINEERS DOES NOT ASSUME ANY RESPONSIBILITY FOR THE FIELD MODIFICATIONS TO THE PLANS.

BY: BKF ENGINEERS                      DATE: JUNE 2011