

IDENTIFICATION STAMP
 DIV. OF THE STATE ARCHITECT
 OFFICE OF REGULATION SERVICE
 APRIL # 01-110097
 AC: [Signature] FS: [Signature] SS: [Signature] P: [Signature]
 DATE: APR 09 2009
 FILE NUMBER:

The use of other project documents and all lines, sections and design incorporated herein are instruments of service. All project documents are the property of BKF, L.P.A. and shall not be used for any other project or purpose without the written consent of BKF, L.P.A. The contractor shall be responsible for obtaining all necessary permits and for the accuracy of all information provided to the contractor. The contractor shall be responsible for the accuracy of all information provided to the contractor. The contractor shall be responsible for the accuracy of all information provided to the contractor. The contractor shall be responsible for the accuracy of all information provided to the contractor.

© Copyright 2008

College of San Mateo
 Site Package
 San Mateo, CA
 Developed for
 San Mateo County Community College District

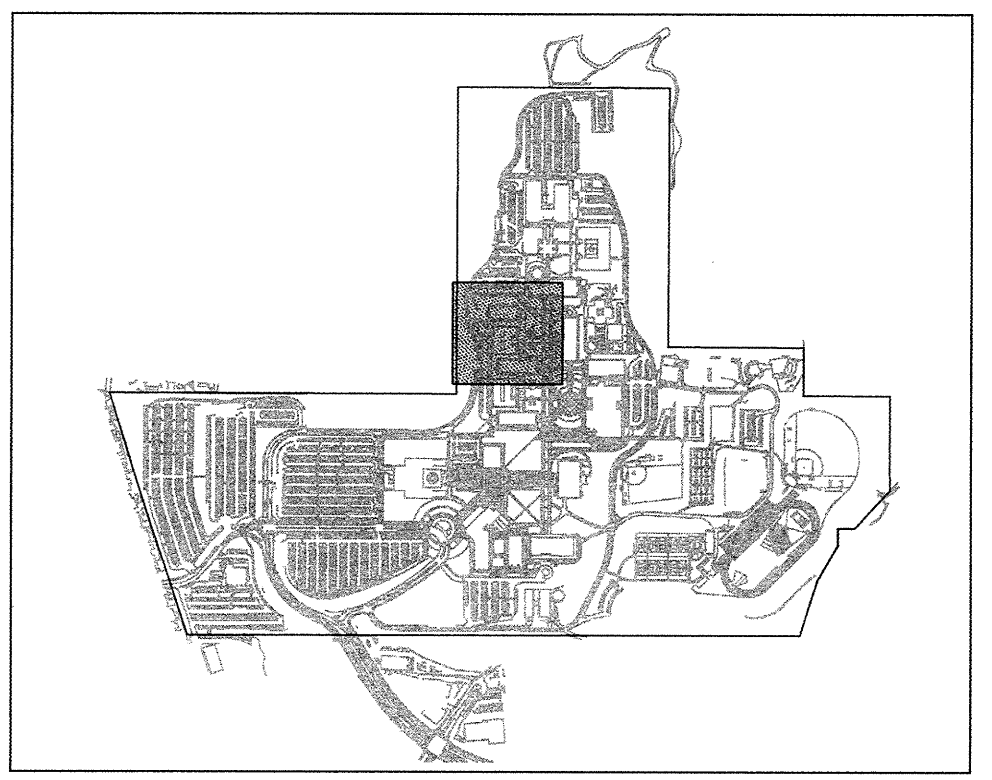
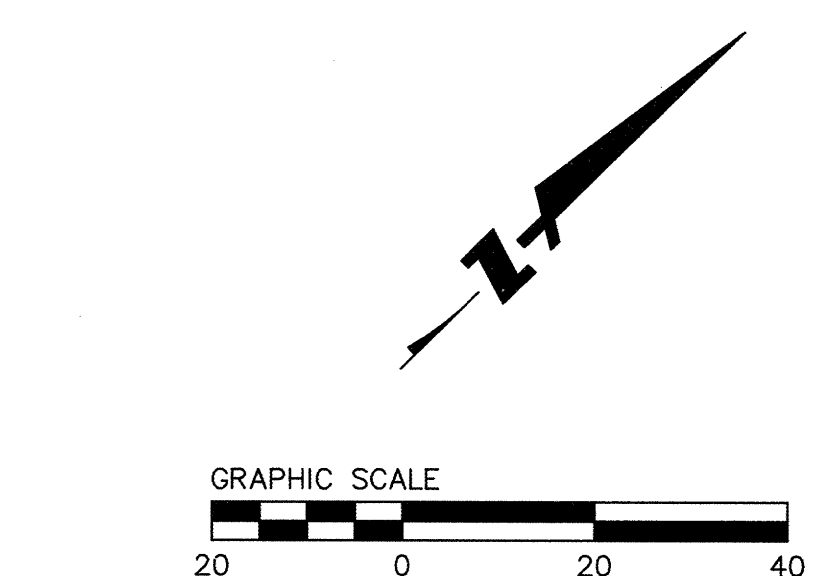
Date	Revision	Description
19 SEPT 2008	1	DSA SUBMITTAL
09 APRIL 2009	2	DSA FINAL

Date	Revision	Description
19 SEPT 2008	1	DSA SUBMITTAL
09 APRIL 2009	2	DSA FINAL

Job No.	27082-30
Date	09 APRIL 2009
Drawn by	MD, JT
Checked by	RH
Scale	1"=20'

HORIZONTAL CONTROL PLAN

C4.11

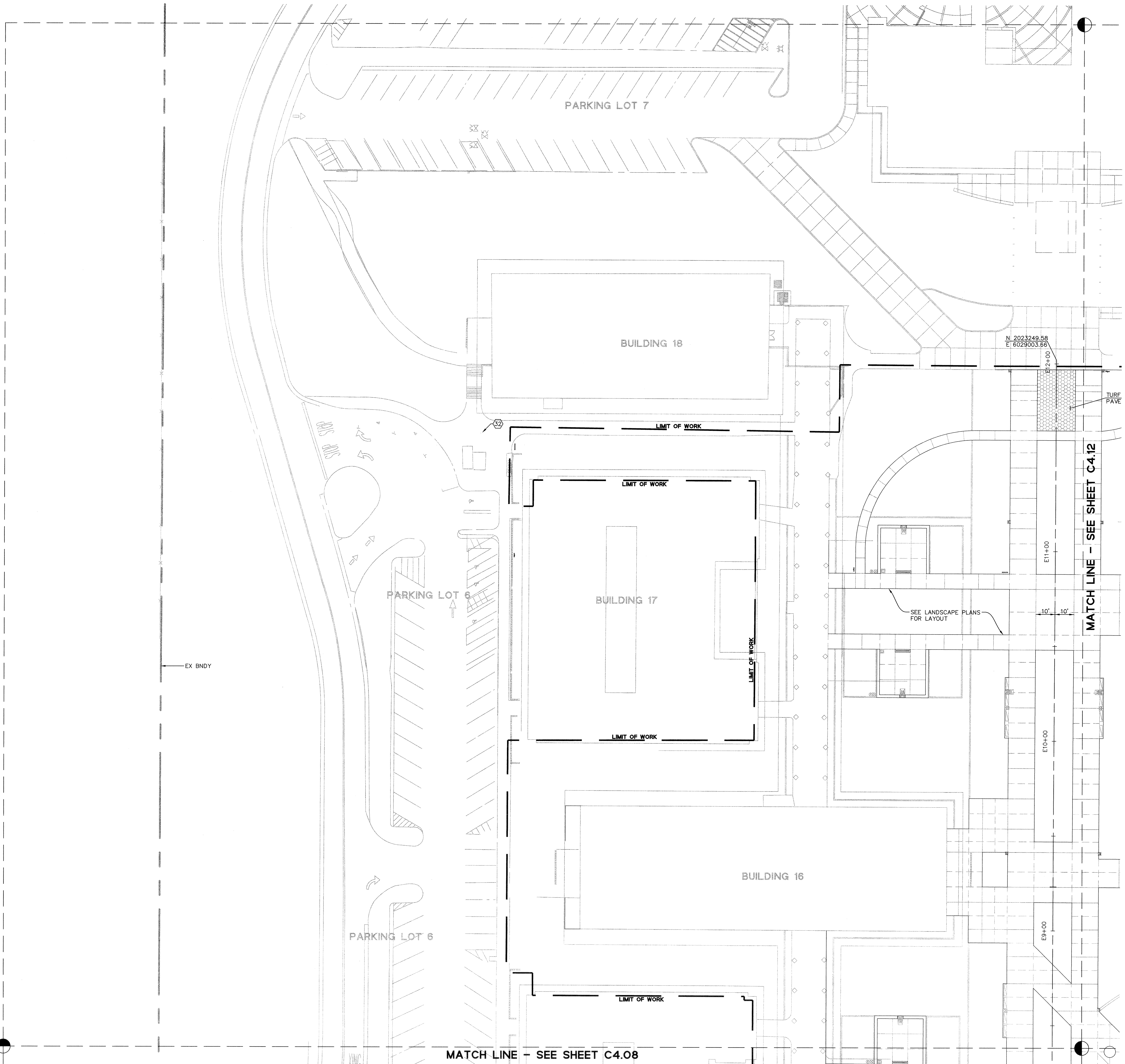


NOTES

- SEE SHEET C4.01 FOR LINE & CURVE TABLE, AND HORIZONTAL CONTROL NOTES.

MARKING, SIGNING, & STRIPING LEGEND

SYMBOL	DESCRIPTION
1	LANE LINE STRIPING, CALTRANS DETAIL 13 PER STANDARD PLAN A20A
2	CHEVRON MARKING PER SEC. 3B.101(CA) OF CALIFORNIA MUTCD
3	TYPE IV (L) ARROW PER CALTRANS STANDARD PLAN A24A
4	TYPE IV (R) ARROW PER CALTRANS STANDARD PLAN A24A
5	"PED XING" LETTERING (6" TALL LETTERS)
6	R59 (RT) SIGN WITH "RIGHT TURN ONLY"
7	"ONE-WAY" SIGN (R6-1)
8	STOP SIGN (R1-1)
9	R28(S)(CA) - "NO STOPPING ANYTIME" - SEE NOTES 4 & 6
10	BLUE REFLECTIVE MARKER
11	DETAIL 38, CHANNELIZING LINE PER STANDARD PLAN A200
12	THRU ARROW PER CALTRANS STANDARD PLAN A24A
13	"BUSES ONLY" SIGN
14	TYPE VII (R) ARROW PER CALTRANS STANDARD PLAN A24A (THRU/RIGHT TURN COMBINATION)
15	"VAN ACCESSIBLE" SIGNAGE, SEE DETAIL 1 ON SHEET C8.02
16	CA TYPE K-1 (OM2-1H) OBJECT MARKER WITH R4-7 "KEEP RIGHT" SIGN.
17	ACCESSIBLE STALL SIGN, SEE DETAIL 1 ON SHEET C8.02
18	4 INCH DIAGONAL STRIPING AT 36" O.C., SEE DETAIL 1 ON SHEET C8.02
19	4 INCH WHITE STRIPING FOR PARKING STALLS
20	TOW AWAY SIGNAGE, SEE DETAIL 1 ON SHEET C8.02
21	STOP BAR (12" WHITE STRIPING)
22	CROSSWALK (12" WHITE PAINT; 6" WIDE MINIMUM)
23	"NO PARKING" SIGN
24	"STOP" LETTERING (6" TALL LETTERS)
25	"YIELD" LETTERING (6" TALL LETTERS)
26	"NO PARKING" LETTERING (12" TALL LETTERS)
27	"LOADING ZONE" LETTERING (12" TALL LETTERS)
28	INTERNATIONAL SYMBOL OF ACCESSIBILITY - SEE DETAIL 1 ON SHEET C8.02
29	PERMIT SIGNAGE SYMBOL - COORDINATE WITH SMCCCD
30	"BUSES ONLY" LETTERING (2.5" TALL LETTERS)
31	DIRECTIONAL SIGNAGE - SEE LANDSCAPE PLANS
32	CAMPUS MAP DIRECTORY - SEE LANDSCAPE PLANS
33	"STOP AHEAD" SIGN
34	"ONE WAY - DO NOT ENTER" SIGN
35	4 INCH WHITE DIAGONAL STRIPING AT 36" O.C.



EX BNDY

MATCH LINE - SEE SHEET C4.08

MATCH LINE - SEE SHEET C4.12

SEE LANDSCAPE PLANS FOR LAYOUT

PARKING LOT 7

BUILDING 18

BUILDING 17

BUILDING 16

PARKING LOT 6

PARKING LOT 6

LIMIT OF WORK

LIMIT OF WORK

LIMIT OF WORK

LIMIT OF WORK

N 2023249.58
 E 6029003.66

TURF PAVE

10' 10'

E10+00

E9+00

40

20

0