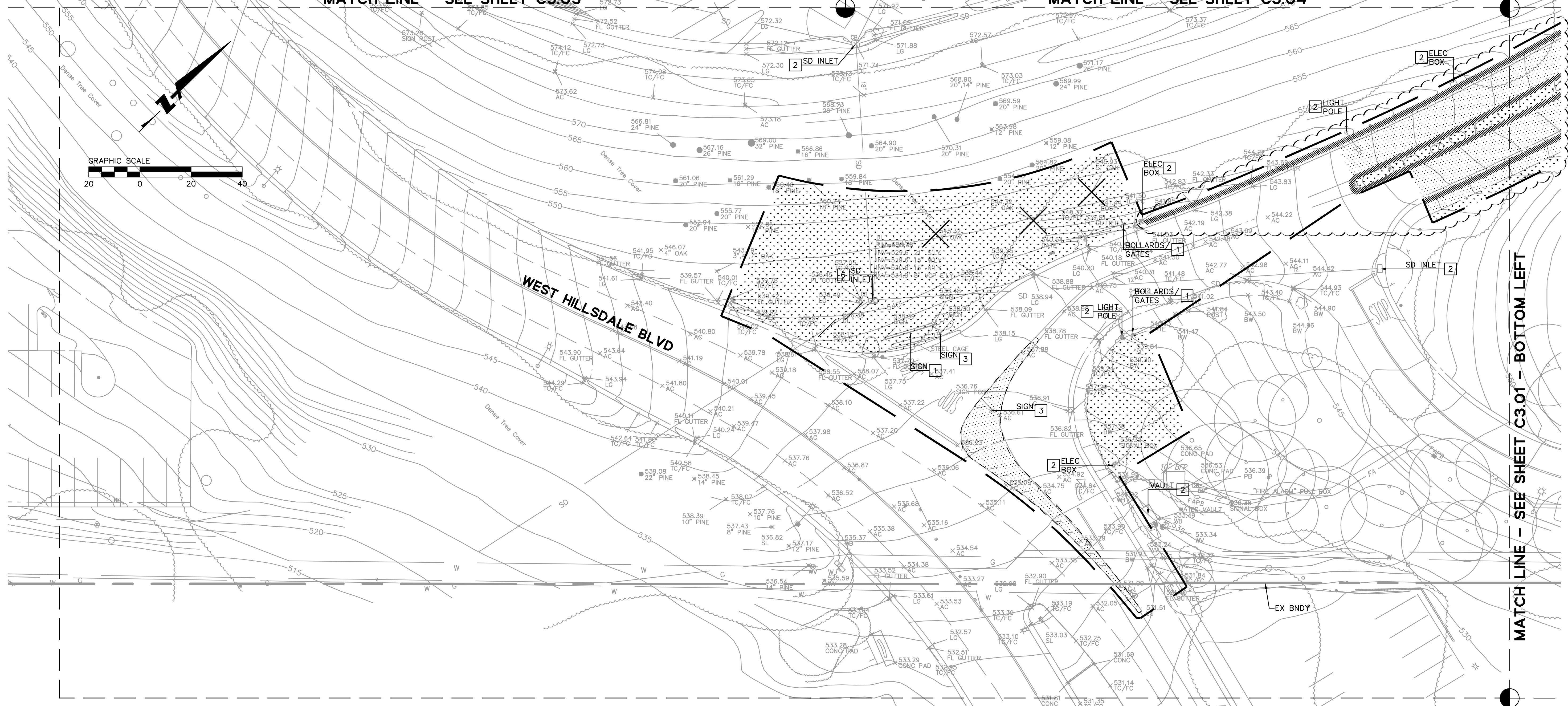


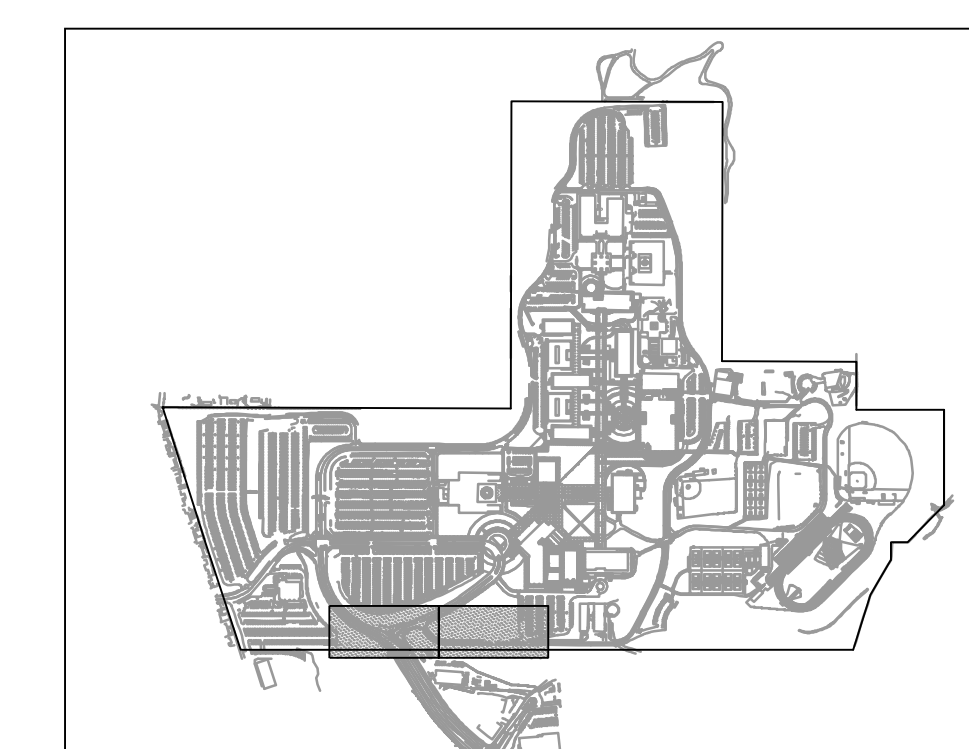
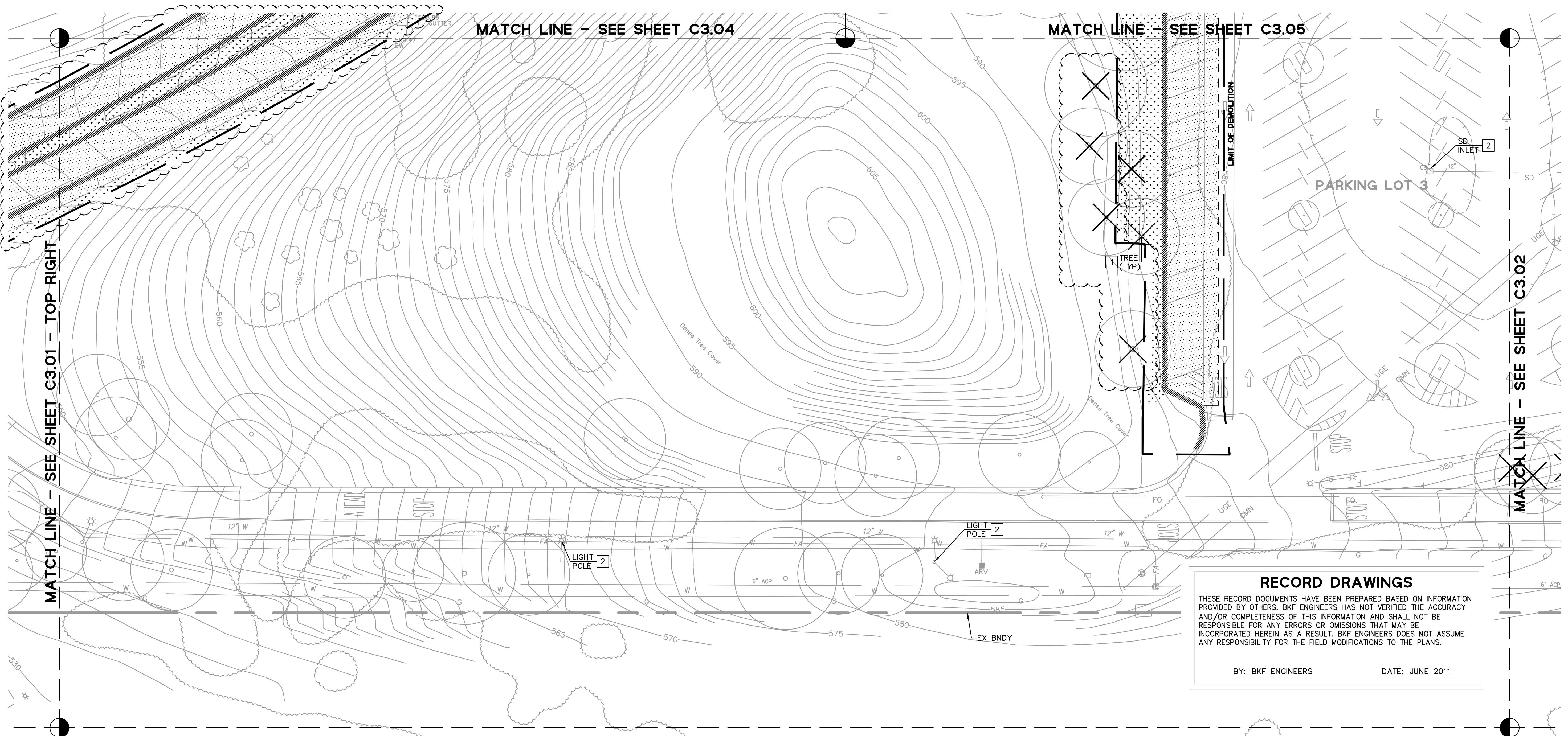
MATCH LINE - SEE SHEET C3.03

MATCH LINE - SEE SHEET C3.04



MATCH LINE - SEE SHEET C3.04

MATCH LINE - SEE SHEET C3.05



KEYMAP

DEMOLITION NOTES

1. REMOVE FROM SITE AND DISPOSE OF IN A LAWFUL MANNER EXISTING STRUCTURES, UTILITIES, AND OTHER FEATURES WITHIN THE LIMIT OF DEMOLITION AS SHOWN.
2. CONTRACTOR SHALL CONTACT USA AT (800) 642-2444 AT LEAST TWO (2) WORKING DAYS PRIOR TO COMMENCEMENT OF ANY DEMOLITION, EXCAVATION OR GRADING WORK.
3. REMOVE ALL HARDSCAPE WITHIN THE LIMITS OF DEMOLITION AS INDICATED.
4. CONTRACTOR SHALL REPLACE ANY DAMAGED STRUCTURE, CURB OR SIDEWALK THAT IS SAID TO REMAIN AND IS DAMAGED DURING THE COURSE OF CONSTRUCTION. REPAIR MUST BE COMPLETED PRIOR TO BUILDING OCCUPANCY.
5. PRIOR TO DEMOLITION, UNPLUG AND/OR DISCONNECT REMAINING ELECTRICAL CIRCUIT PANELS AND GAS LINES WHERE APPLICABLE PER PG&E APPLICABLE STANDARDS.
6. REMOVE ALL ACCESSORY BUILDING OR PORTABLE STRUCTURES FROM SITE.
7. REMOVE ALL INTERIOR FENCING, FENCE POSTS FOUNDATIONS, AND OTHER LANDSCAPING FEATURES WHERE APPLICABLE.
8. SAFE-OFF AND/OR DISCONNECT LIGHT POLE CIRCUITS MARKED FOR RELOCATION. CAP AND ABANDON ELECTRICAL CONDUIT PER PG&E APPLICABLE STANDARDS. REMOVE LIGHT POLE AND LIGHT POLE FOUNDATION. CONTRACTOR IS RESPONSIBLE FOR COORDINATION WITH THE COLLEGE OF SAN MATEO FOR STREET LIGHT RELOCATION WITHIN PROJECT LIMITS OF WORK.
9. AN APPROVED TEMPORARY FENCE SHALL BE INSTALLED ALONG THE LIMITS OF DEMOLITION PRIOR TO DEMOLITION WHERE REQUIRED. GATES SHALL BE KEPT LOCKED DURING NON-WORKING HOURS.
10. CONTRACTOR IS RESPONSIBLE FOR DEMOLITION WITHIN THE LIMITS OF THE PROPOSED PROJECT AND WHERE APPLICABLE ON THESE PLANS. CONTRACTOR SHALL NOT DISRUPT UTILITY SERVICE TO ANY REMAINING BUILDINGS.
11. CONTRACTOR TO COORDINATE AND STORAGE OF MISCELLANEOUS TEMPORARY VEHICULAR AND PEDESTRIAN SIGNAGE WITH THE COLLEGE DISTRICT.
12. CONTRACTOR IS RESPONSIBLE FOR PROVIDING THEIR OWN TRAFFIC CONTROL AND OBTAINING ANY PERMITS TO WORK IN THE CITY'S PUBLIC RIGHT-OF-WAY.
13. EXISTING SUBSURFACE UTILITIES SHOWN ON THESE PLANS WERE TAKEN FROM RECORD INFORMATION KNOWN TO THE ENGINEER. THESE PLANS ARE NOT MEANT TO BE A FULL CATALOG OF EXISTING SUBSURFACE CONDITIONS. CONTRACTOR SHALL CONDUCT FIELD INVESTIGATIONS TO VERIFY ALL LOCATIONS AND ELEVATIONS OF EXISTING SUBSURFACE UTILITIES, WHETHER SHOWN ON PLANS OR NOT.
14. SEE HORIZONTAL CONTROL PLANS FOR SIGNING & STRIPING.
15. DEMOLITION OF ALL BUILDINGS AND STRUCTURES SHALL CONFORM TO THE RECOMMENDATIONS PROVIDED IN THE GEOTECHNICAL REPORT.
16. LANDSCAPE AREAS SHALL BE STRIPPED A MINIMUM OF 12 INCHES BELOW EXISTING GRADE. SITE SHALL BE STRIPPED OF ALL SURFACE VEGETATION AS INDICATED ON THE PLANS.
17. TREES AND SHRUBS DESIGNATED FOR REMOVAL SHALL HAVE ROOTBALLS AND ANY ROOTS GREATER THAN 1/2 INCH DIAMETER REMOVED.
18. GEOTECHNICAL ENGINEER MAY INCLUDE OTHER AREAS IN NEED OF PAVEMENT REHABILITATION BASED ON FIELD CONDITIONS. REFER TO SHEET C1.05 FOR ADDITIONAL PAVEMENT REPLACEMENT.

DEMOLITION SYMBOLS

- 1 TO BE REMOVED
- 2 TO REMAIN, PROTECT IN PLACE
- 3 TO BE RELOCATED. SALVAGED ITEMS TO BE STORED & INSTALLED UNDER DIRECTION OF ENGINEER.
- 4 ADJUST TO GRADE
- 5 GRIND OFF EXISTING STRIPING & PAVEMENT MARKINGS. SEE HORIZONTAL CONTROL SHEETS 4.01 TO 4.18 FOR PROPOSED STRIPING & PAVEMENT MARKINGS.
- 6 TO REMAIN, PROTECT IN PLACE. INSTALL BOLT-ON COVER.
- 7 TO BE REMOVED & RETURNED TO COLLEGE.

DEMOLITION LEGEND

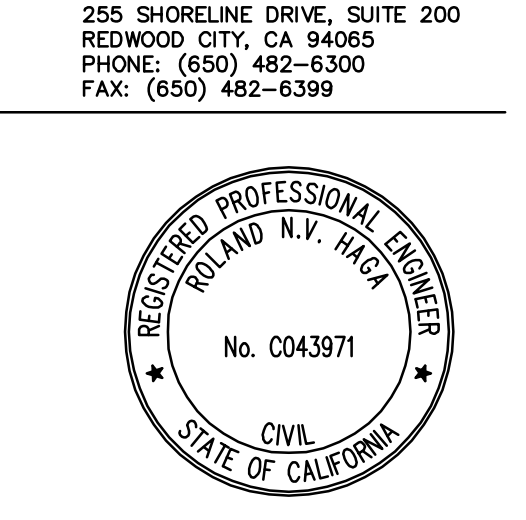
- HARDSCAPE TO BE DEMOLISHED & REMOVED (INCLUDING AC PAVEMENT, AB, SIDEWALK, MISC CONCRETE.)
- LANDSCAPE TO BE REMOVED
- EXISTING UTILITY TO BE DEMOLISHED & REMOVED
- EXISTING CURB TO BE DEMOLISHED & REMOVED
- SAWCUT LINE
- LIMITS OF DEMOLITION
- TREE TO BE REMOVED
- TREE TO REMAIN

RECORD DRAWINGS
 THESE RECORD DOCUMENTS HAVE BEEN PREPARED BASED ON INFORMATION PROVIDED BY OTHERS. BKF ENGINEERS HAS NOT VERIFIED THE ACCURACY AND/OR COMPLETENESS OF THIS INFORMATION AND SHALL NOT BE RESPONSIBLE FOR ANY ERRORS OR OMISSIONS THAT MAY BE INCORPORATED HEREIN AS A RESULT. BKF ENGINEERS DOES NOT ASSUME ANY RESPONSIBILITY FOR THE FIELD MODIFICATIONS TO THE PLANS.

BY: BKF ENGINEERS DATE: JUNE 2011



McCarthy Building Companies, Inc.
 343 Sansome Street, 14th Floor
 San Francisco, California 94104
 P 415 364-1339
 F 415 397-5999



IDENTIFICATION STAMP
 DIV. OF THE STATE ARCHITECT
 OFFICE OF REGULATION SERVICE

APPL. # 01-110097

AC: _____ FLS: _____ SS: _____

DATE: _____

FILE NUMBER: _____

This and all other project documents are the property of BKF Engineers, Inc. (BKF) and shall be held in confidence. No part of any project documents may be reproduced or transmitted in any form or by any means, electronic, mechanical, photocopying, recording, or by any information storage and retrieval system, without the prior written permission of BKF Engineers, Inc. BKF Engineers, Inc. is not responsible for any errors or omissions in these documents. BKF Engineers, Inc. is not responsible for any damage to property or persons caused by the use of these documents. BKF Engineers, Inc. is not responsible for any damage to property or persons caused by the use of these documents. BKF Engineers, Inc. is not responsible for any damage to property or persons caused by the use of these documents.

© Copyright 2008

College of San Mateo
 Site Package
 San Mateo, CA

Developed for
 San Mateo County Community College District

Revision	Description	Date

Revision	Description	Date
DSK	SUBMITTAL	19 SEPT 2008
DSK	FINAL	09 APRIL 2009
	PROJECT RECORD DRAWING	JUNE 2011

Job No.	27062.30
Date	02 APRIL 2009
Drawn by	MD, JT
Checked by	RH
Scale	1"=20'

DEMOLITION PLAN

C3.01