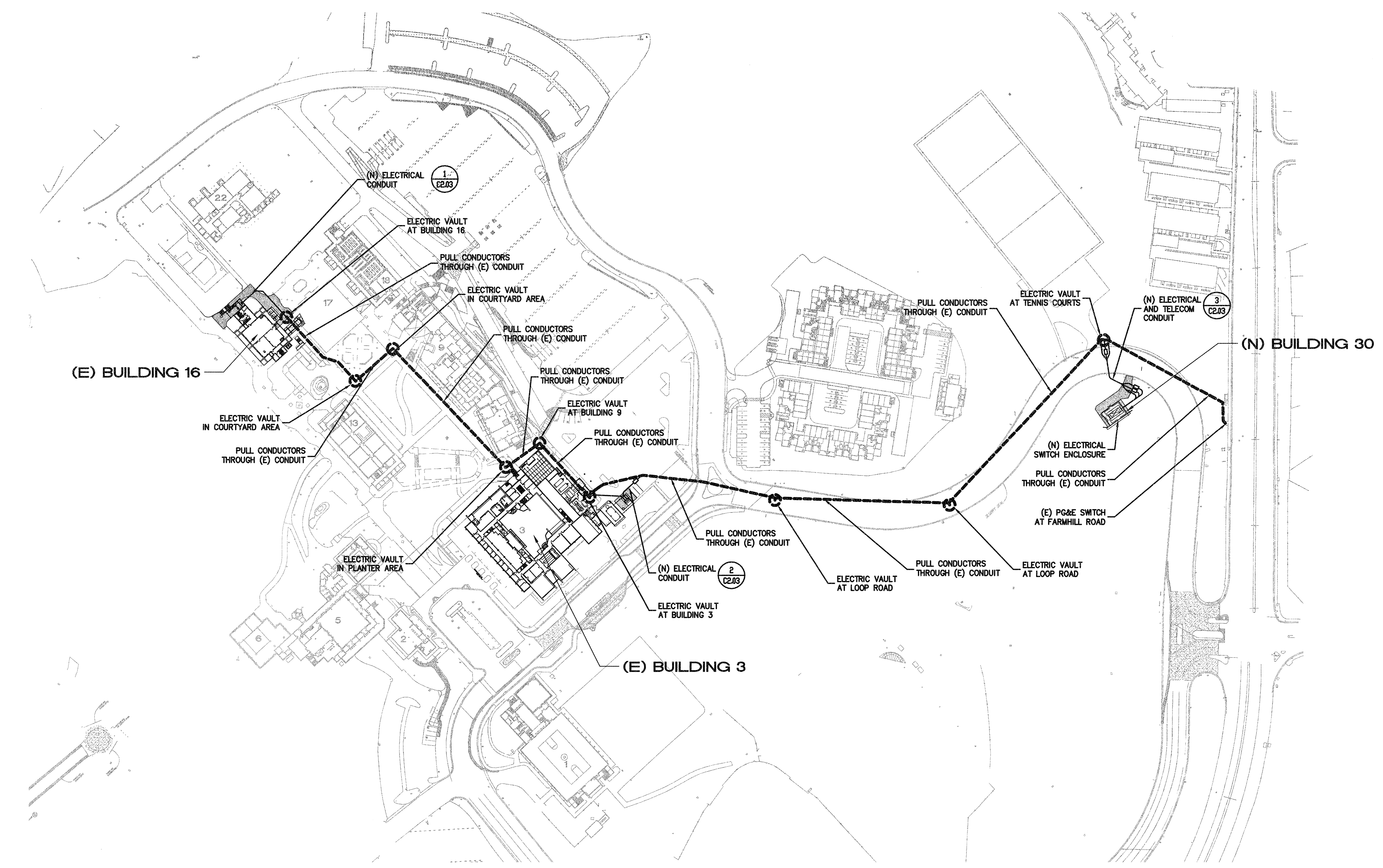


| REVISIONS | | |
|-----------|------|-------------|
| NO. | DATE | DESCRIPTION |
| | | |
| | | |
| | | |
| | | |
| | | |
| | | |
| | | |
| | | |
| | | |
| | | |



NOTES

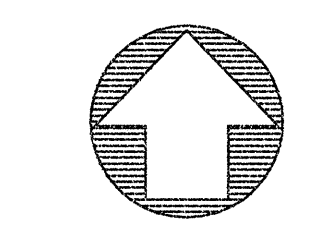
- SEE SHEET C2.03 FOR DETAILED INFORMATION IN OPEN TRENCH CONSTRUCTION
- CONTRACTOR SHALL BE RESPONSIBLE FOR CONFIRMING DIMENSIONS OF CONDUIT RUNS. SEE GENERAL NOTE #2 SHEET E1.1
- CONTRACTOR TO REMOVE (E) CONDUCTORS FROM TENNIS COURT TO FARM HILL ROAD. SEE SINGLE LINE DIAGRAM FOR NOTES.

LEGEND

- PULL THROUGH EXISTING CONDUIT
- (N) ELECTRICAL TRENCH
- (N) FULL TRAFFIC ELECTRICAL VAULT
- (N) 3' x 5' TRAFFIC RATED ELECTRICAL VAULT
- (E) VAULT TO BE PULLED THROUGH

OVERALL ELECTRIC CONDUIT ROUTING

SCALE: 1" = 100'



GRAPHIC SCALE

