

**ONE RAMP GRAB RAIL PC-MK 17A**

\*SEE D9 FOR INFO NOT SHOWN

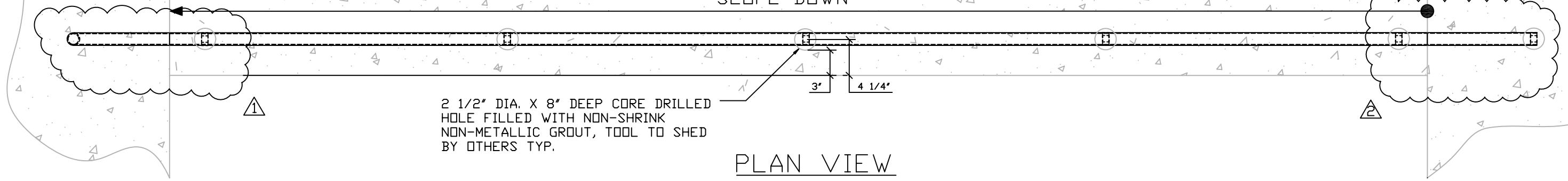


**GLEN-CRETE PRODUCTS, INC.**

PROJECT: CSM BLDG.'S 15 & 17	SCALE: 1" = 1'-0"
LOCATION: SAN MATEO, CA	DATE: 02-10-10
CONTRACTOR: PANKOW SPECIAL PROJECTS, L.P.	02-22-10
DWG: BLDG. 17 NORTH RAMP NORTH RAIL	DWG. NO. D5

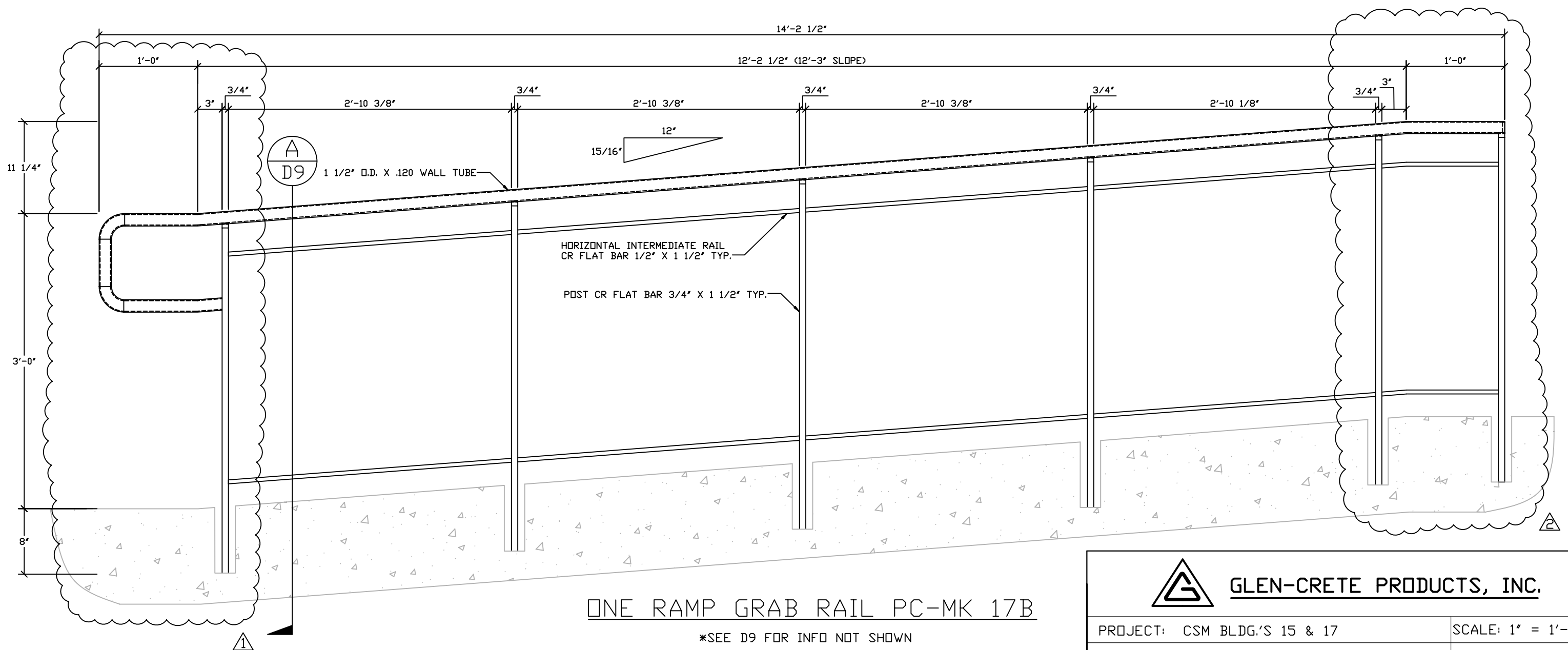


BLDG. 17 NORTH RAMP  
SLOPE DOWN



2 1/2" DIA. X 8" DEEP CORE DRILLED  
HOLE FILLED WITH NON-SHRINK  
NON-METALLIC GROUT, TOOL TO SHED  
BY OTHERS TYP.

PLAN VIEW



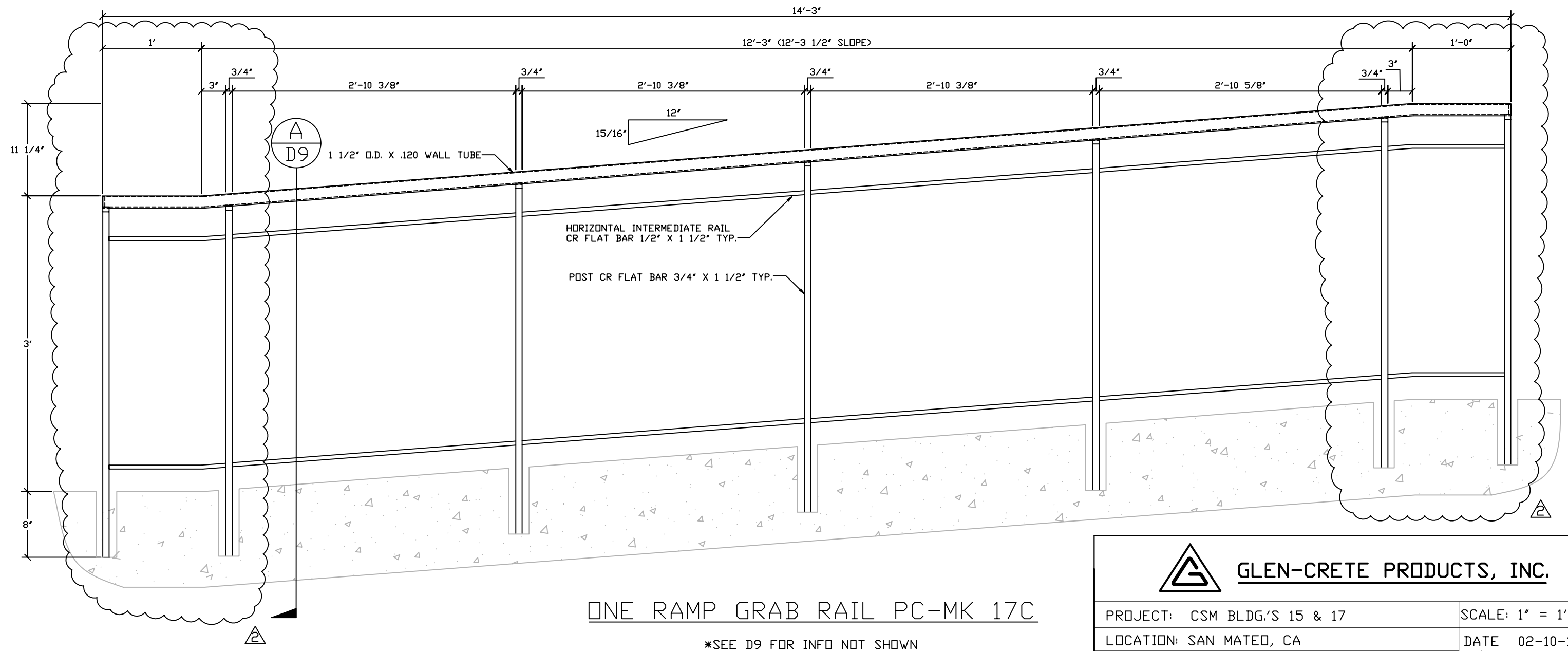
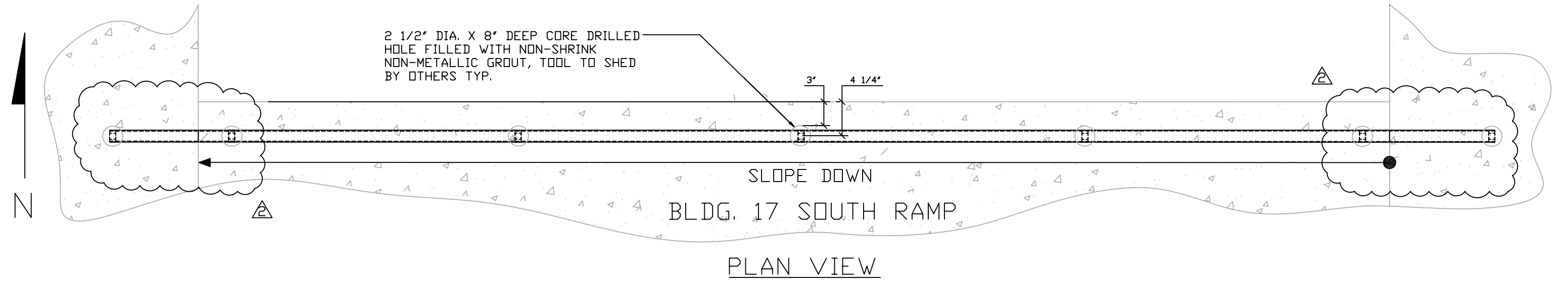
ONE RAMP GRAB RAIL PC-MK 17B

\*SEE D9 FOR INFO NOT SHOWN



**GLEN-CRETE PRODUCTS, INC.**

PROJECT: CSM BLDG.'S 15 & 17	SCALE: 1" = 1'-0"
LOCATION: SAN MATEO, CA	DATE 02-10-10
CONTRACTOR: PANKOW SPECIAL PROJECTS, L.P.	02-22-10
DWG: BLDG. 17 NORTH RAMP SOUTH RAIL	DWG. NO. D6



ONE RAMP GRAB RAIL PC-MK 17C

\*SEE D9 FOR INFO NOT SHOWN

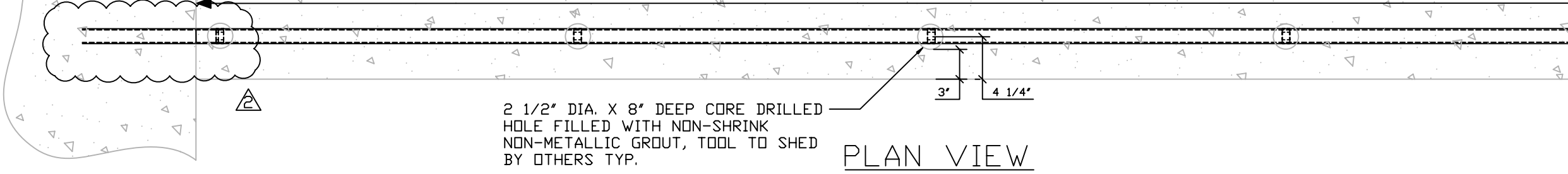


**GLEN-CRETE PRODUCTS, INC.**

PROJECT: CSM BLDG.'S 15 & 17	SCALE: 1" = 1'-0"
LOCATION: SAN MATEO, CA	DATE 02-10-10
CONTRACTOR: PANKOW SPECIAL PROJECTS, L.P.	02-22-10
DWG: BLDG. 17 SOUTH RAMP NORTH RAIL	DWG. NO. D7

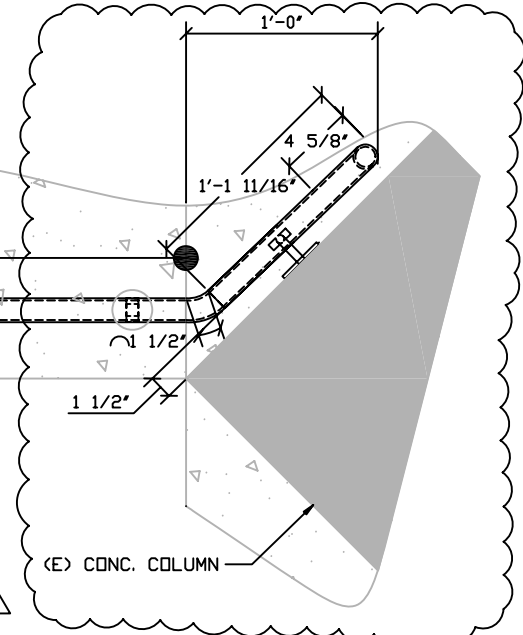


BLDG. 17 SOUTH RAMP  
SLOPE DOWN

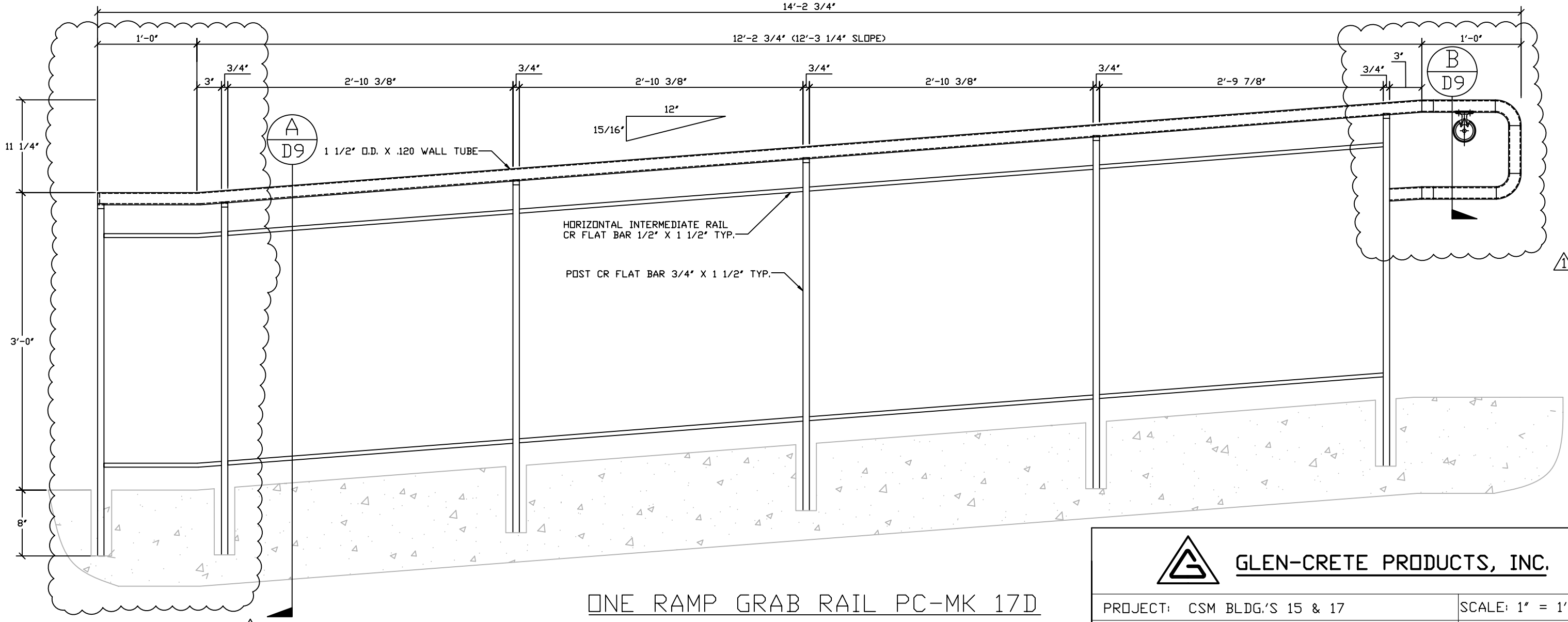


2 1/2" DIA. X 8" DEEP CORE DRILLED  
HOLE FILLED WITH NON-SHRINK  
NON-METALLIC GROUT, TOOL TO SHED  
BY OTHERS TYP.

PLAN VIEW



(E) CONC. COLUMN



ONE RAMP GRAB RAIL PC-MK 17D

\*SEE D9 FOR INFO NOT SHOWN

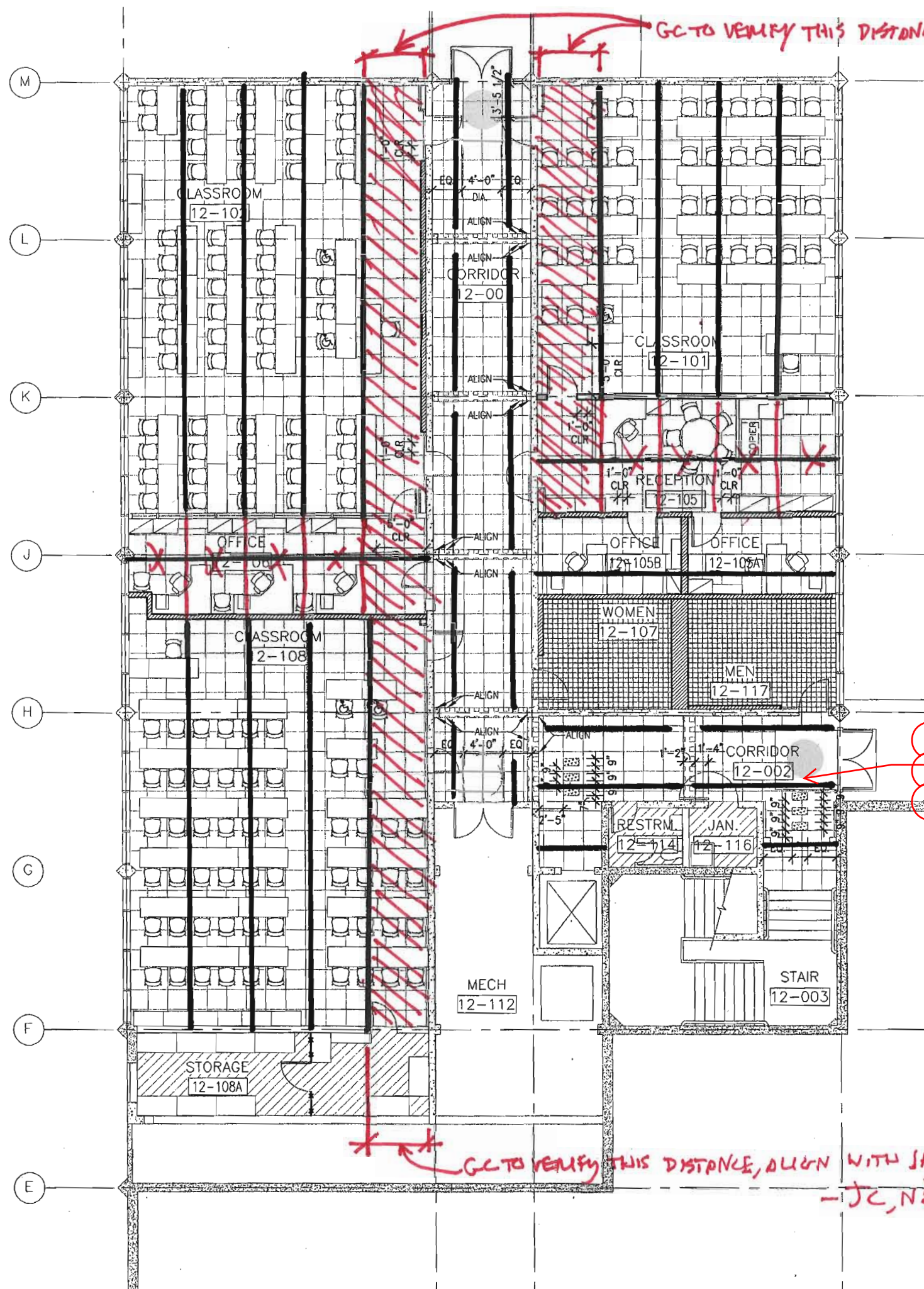


**GLEN-CRETE PRODUCTS, INC.**

PROJECT: CSM BLDG.'S 15 & 17	SCALE: 1" = 1'-0"
LOCATION: SAN MATEO, CA	DATE 02-10-10
CONTRACTOR: PANKOW SPECIAL PROJECTS, L.P.	02-22-10
DWG: BLDG. 17 SOUTH RAMP SOUTH RAIL	DWG. NO. D8







GC TO VERIFY THIS DISTANCE, ALIGN WITH GYP SOFFIT ABOVE  
-JC, N&T, 02.17.10

THIS SUBMITTAL REVIEW PENDING DISTRICT REVIEW OF BUILDING 12 FURNITURE AND FINISHES BOARD.

NO EXCEPTION TAKEN  
 MAKE CORRECTIONS NOTED  
 REJECTED  
 SUBMIT SPECIFIED ITEM  
 REVISE AND RESUBMIT

Review is only for general conformance with the design concept of the project and general compliance with the information given in the contract documents. Any action shown is subject to the requirements of the plans and specifications. Contractor is responsible for: Dimensions which shall be confirmed and correlated at the job site; fabrication processes and techniques of construction; coordination of Contractor's work with that of all other trades and the satisfactory performance of Contractor's work.

By: Jim Coay

Date: 02.17.10 **noll&tam**  
architects and planners

Align centerline of circle in Corr 12-002 with rectangles at interior stairs

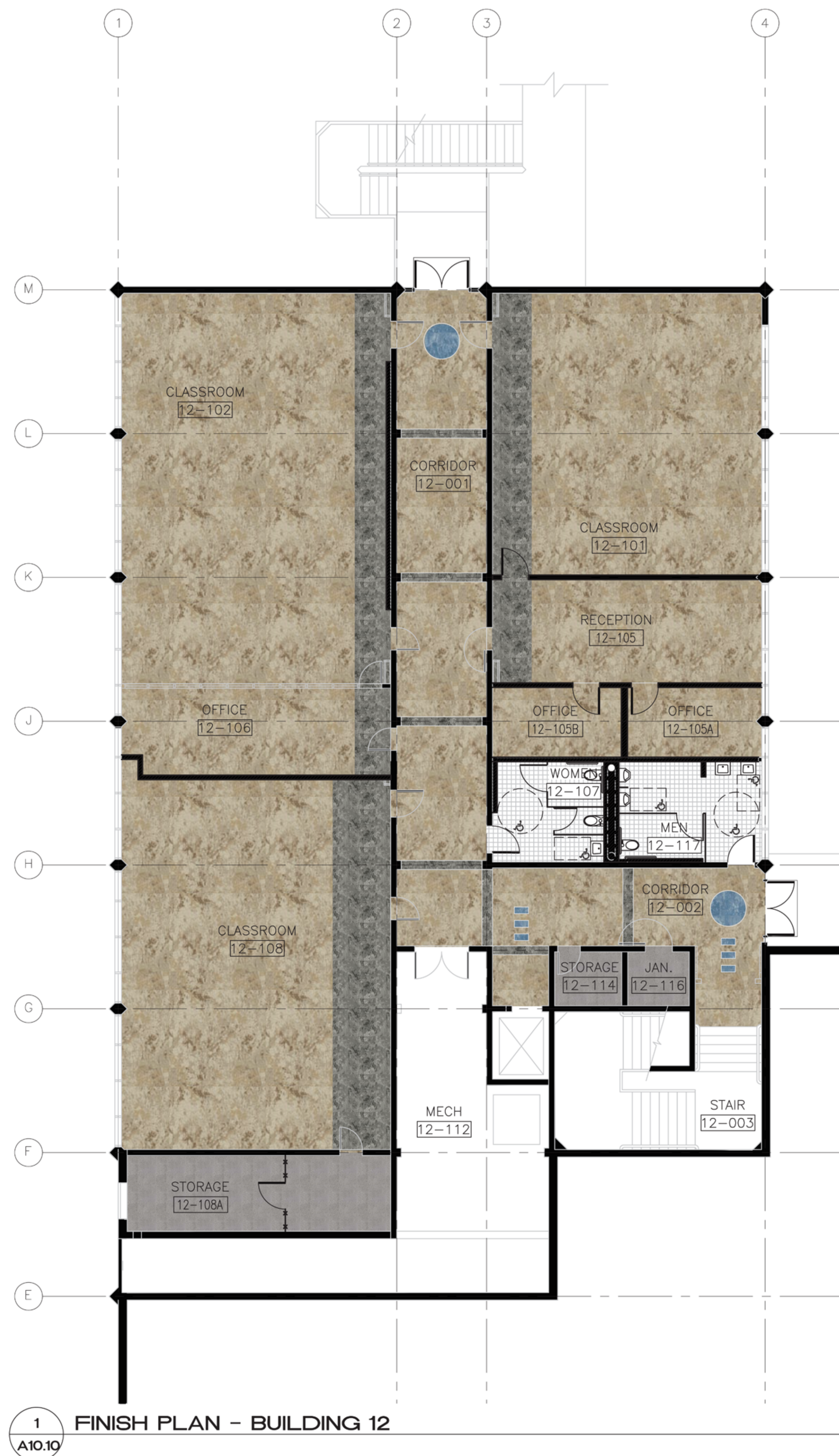


NORTHERN LIGHTS PER BUILDING 12 FURNITURE AND FINISHES BOARD, SUBMITTED 02.03.10 (ATTACHED). (PLEASE NOTE THAT BUILDING 12 FURNITURE AND FINISHES BOARD HAS NOT BEEN APPROVED BY THE SMCUP, AND AS SUCH OUR REVIEW Bldg 12 Seaming Plan R-1 COMMENTS ARE SUBJECT TO REVISION) -JC, N&T, 02.17.10

GC TO VERIFY THIS DISTANCE, ALIGN WITH JAMBS OF DOOR. 2/16/10

-JC, N&T, 02.17.10 Submittal 12-001R



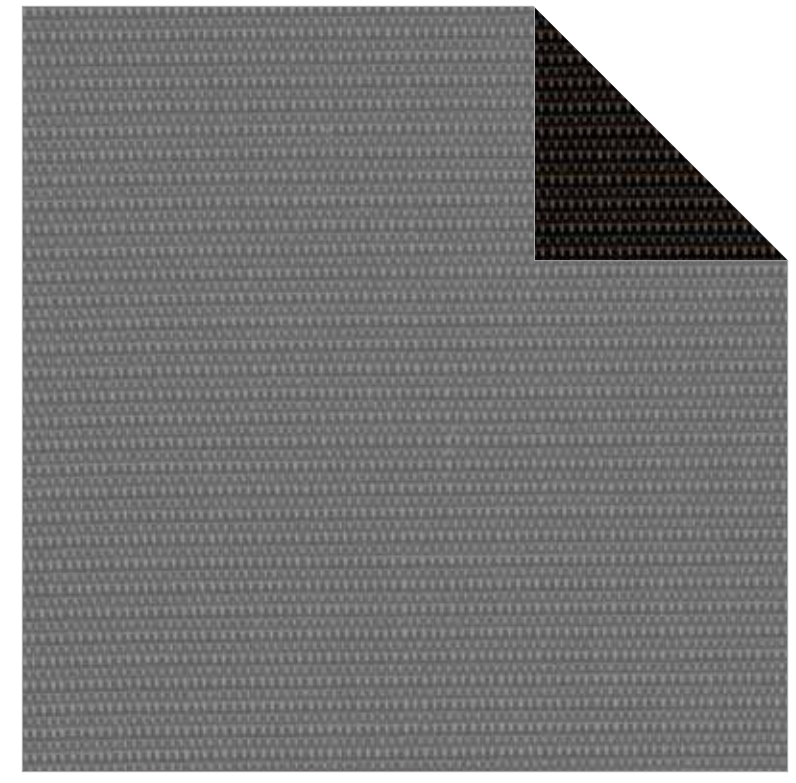


1 FINISH PLAN - BUILDING 12  
A10.10

1/8"=1'-0"



Forbo (2205)



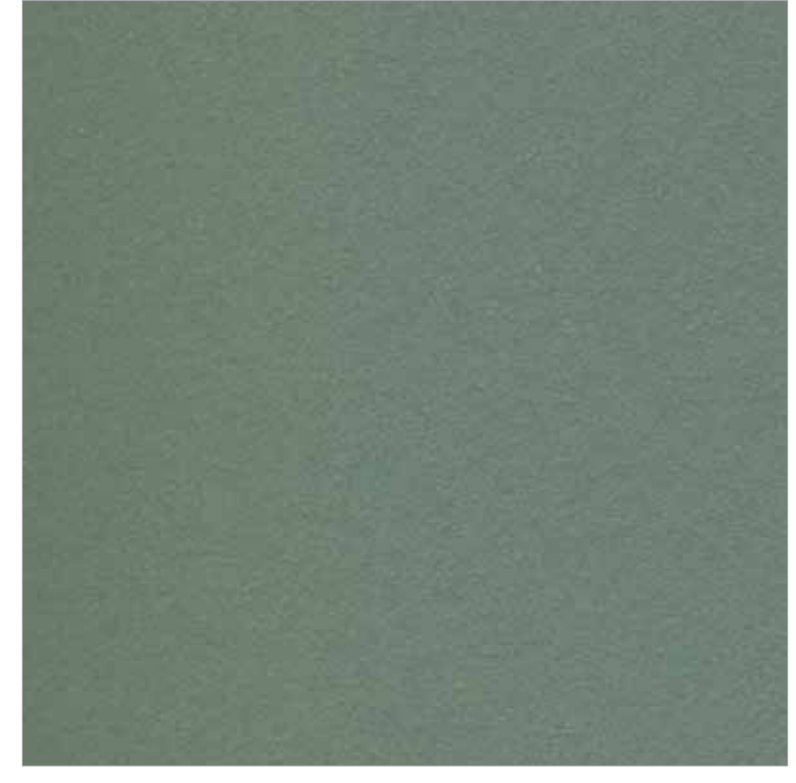
Shadecloth (Mechoshade: Slate)



Fabric (Dapple Midnight)



Fabric (Latifolia Grape)



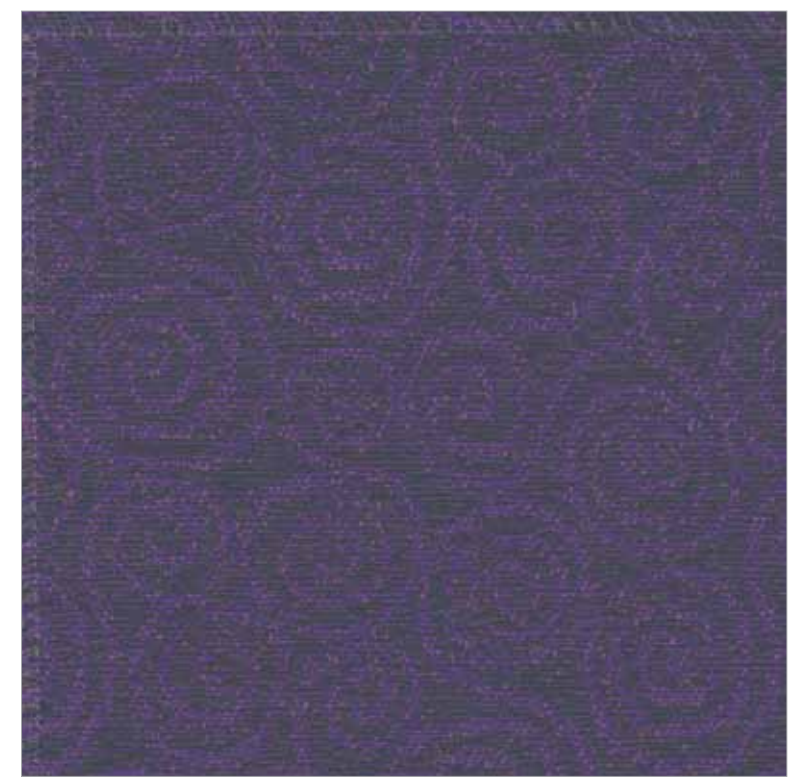
Forbo (2203)



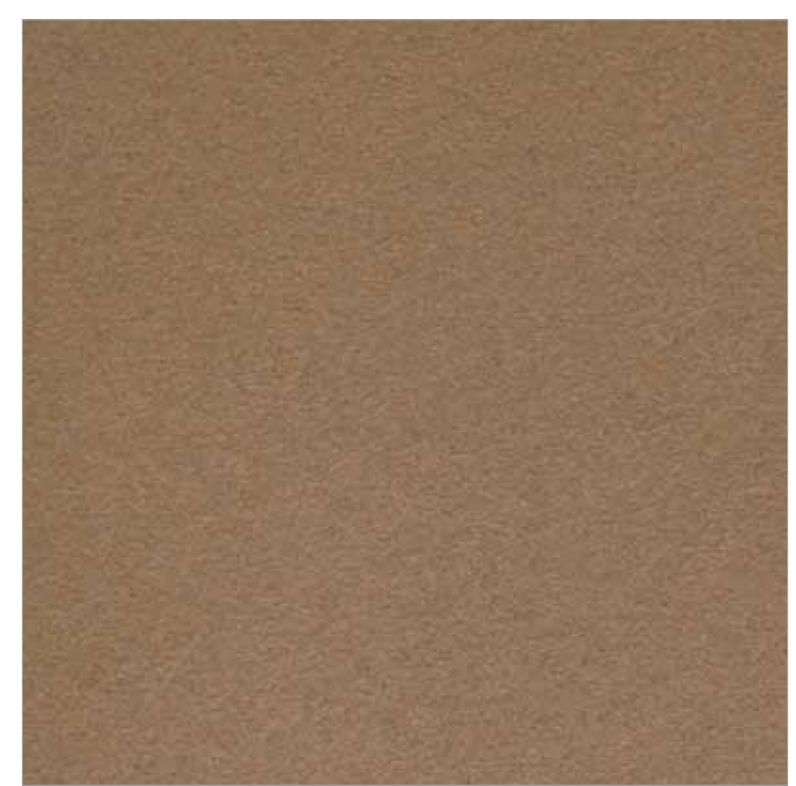
Countertop  
(Corian: Delta Sand)



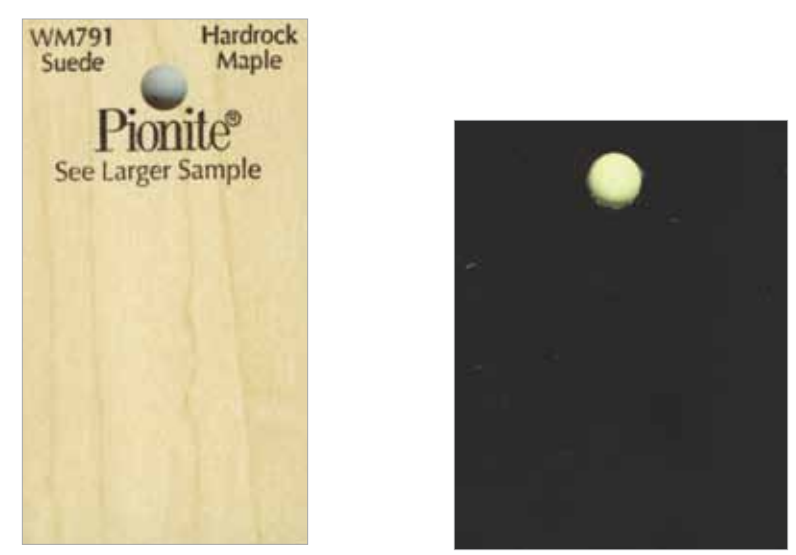
Fabric (Astrance Currant)



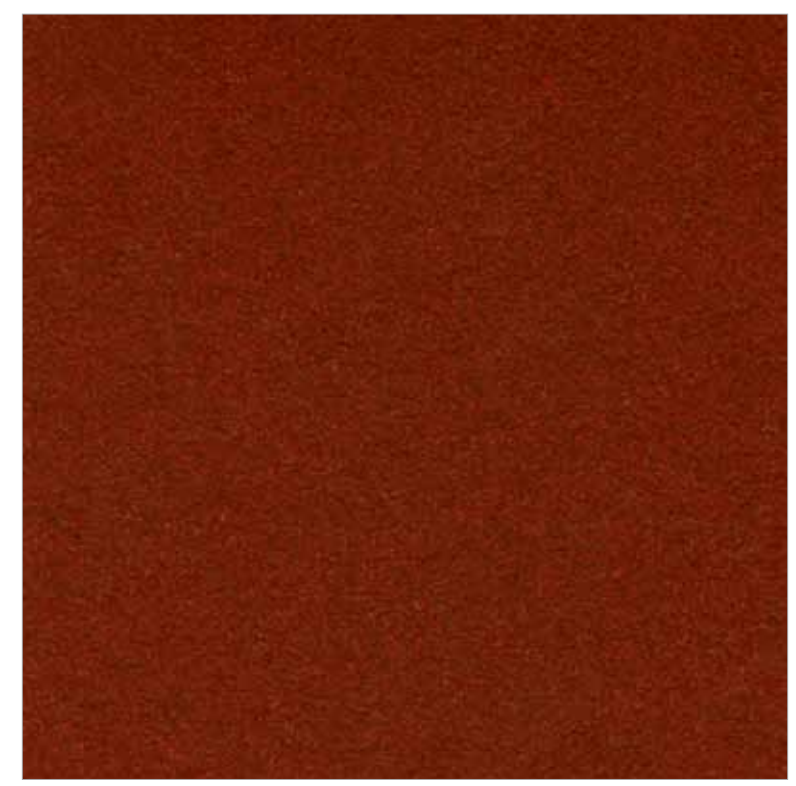
Fabric (Newgrange Heather)



Forbo (2186)



Plastic Laminate  
(Pionite: Hardrock Maple, Jett Black)



Forbo (2201)

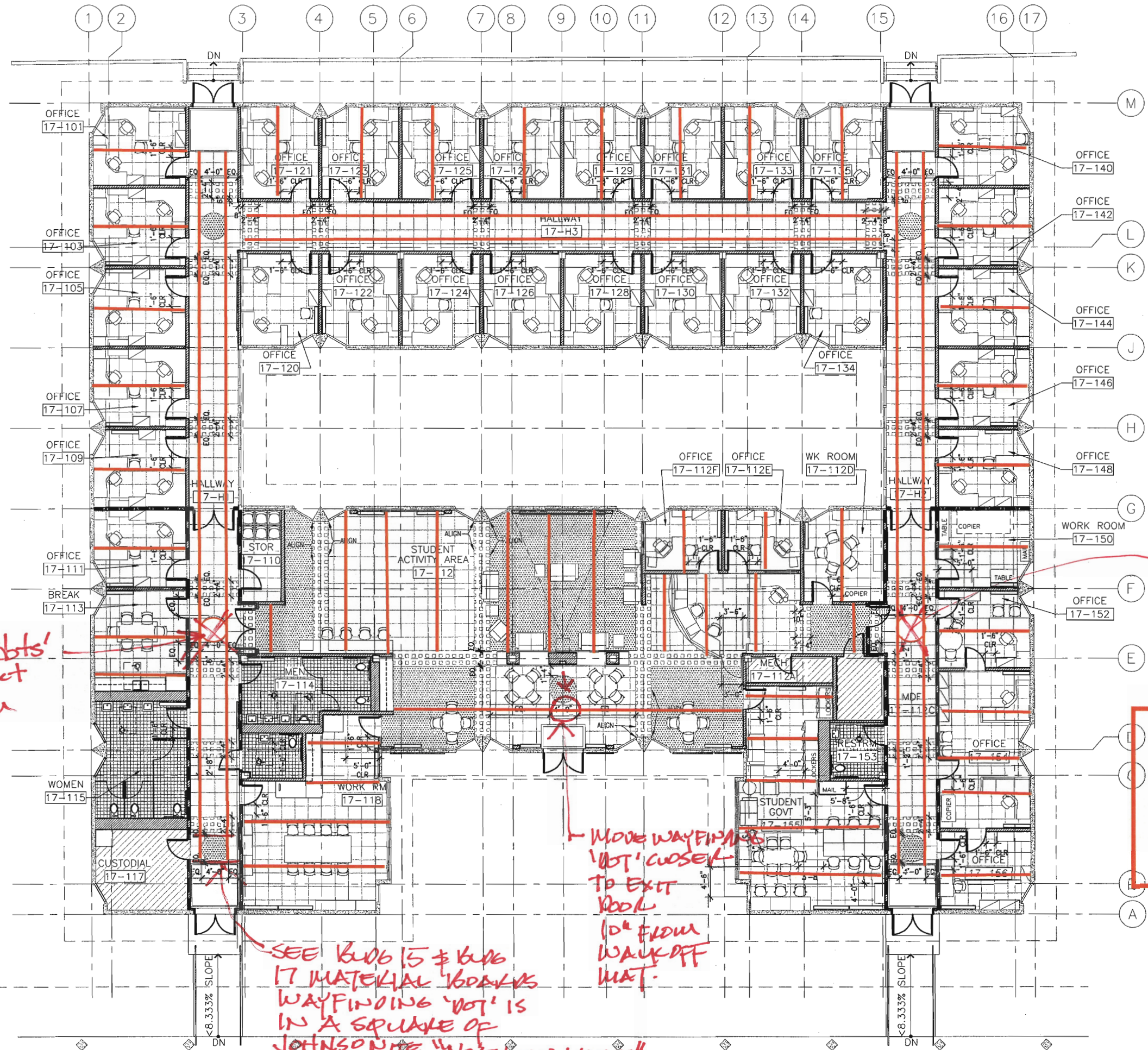


Linoleum Floor (Johnsonite: Fossil 502, Northern Lights 608, TwiNight 662)



Paint (Wisteria, Bone)





delete 'dots'  
per district  
direction

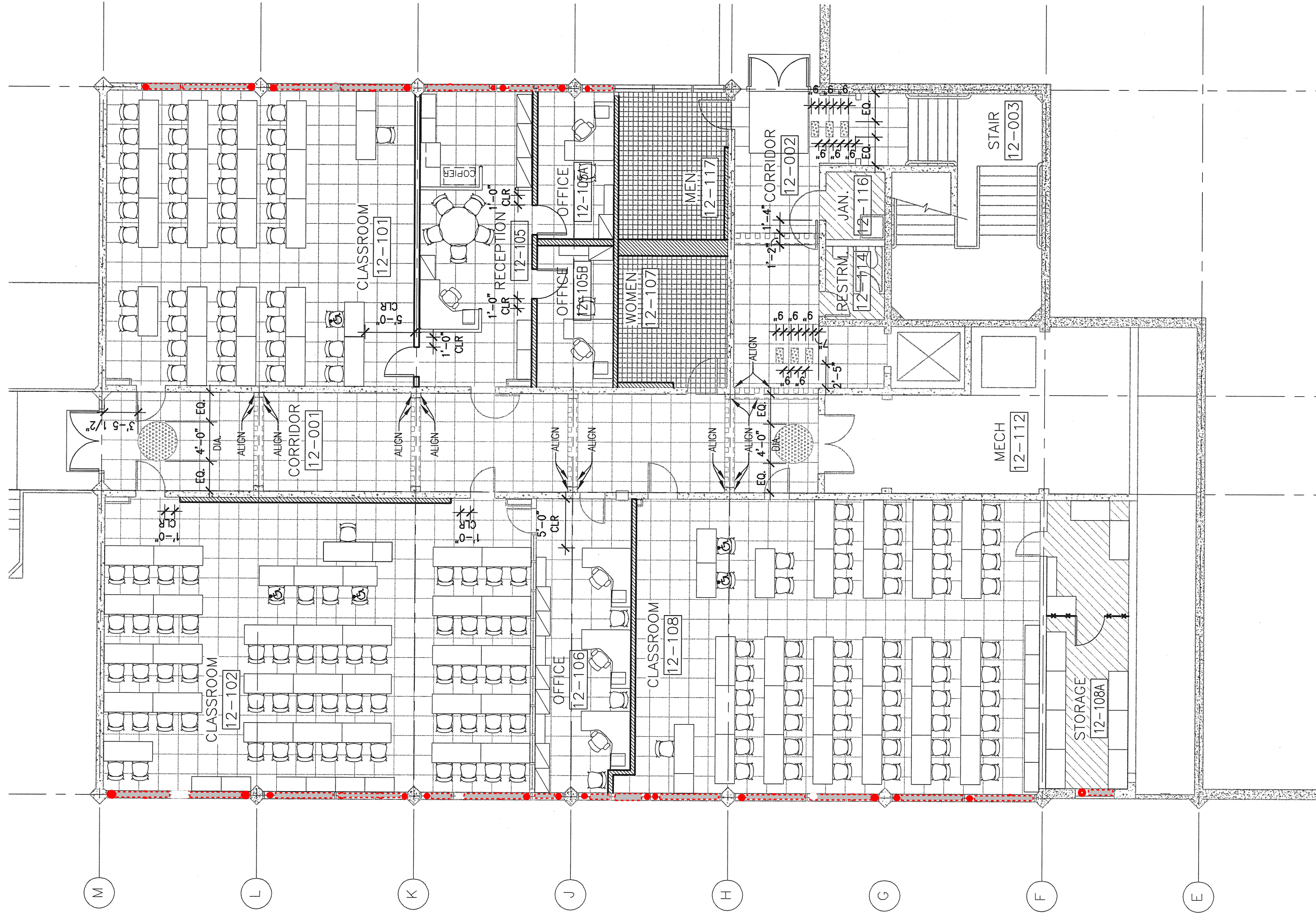
delete 'dots'  
per DISTRICT  
DIRECTION

MOVE WAYFINDING  
'DOT' CLOSER  
TO EXIT  
DOOR  
FROM  
WALKOFF  
MAT.

SEE BUDG 15 & BUDG  
17 MATERIAL BOOKS  
WAYFINDING 'DOT' IS  
IN A SQUARE OF  
JOHNSONITE "NORTHERN LIGHTS"

**CSM B 17 Seaming Plan**  
**Hoem & Assocs**  
**11/19/09**

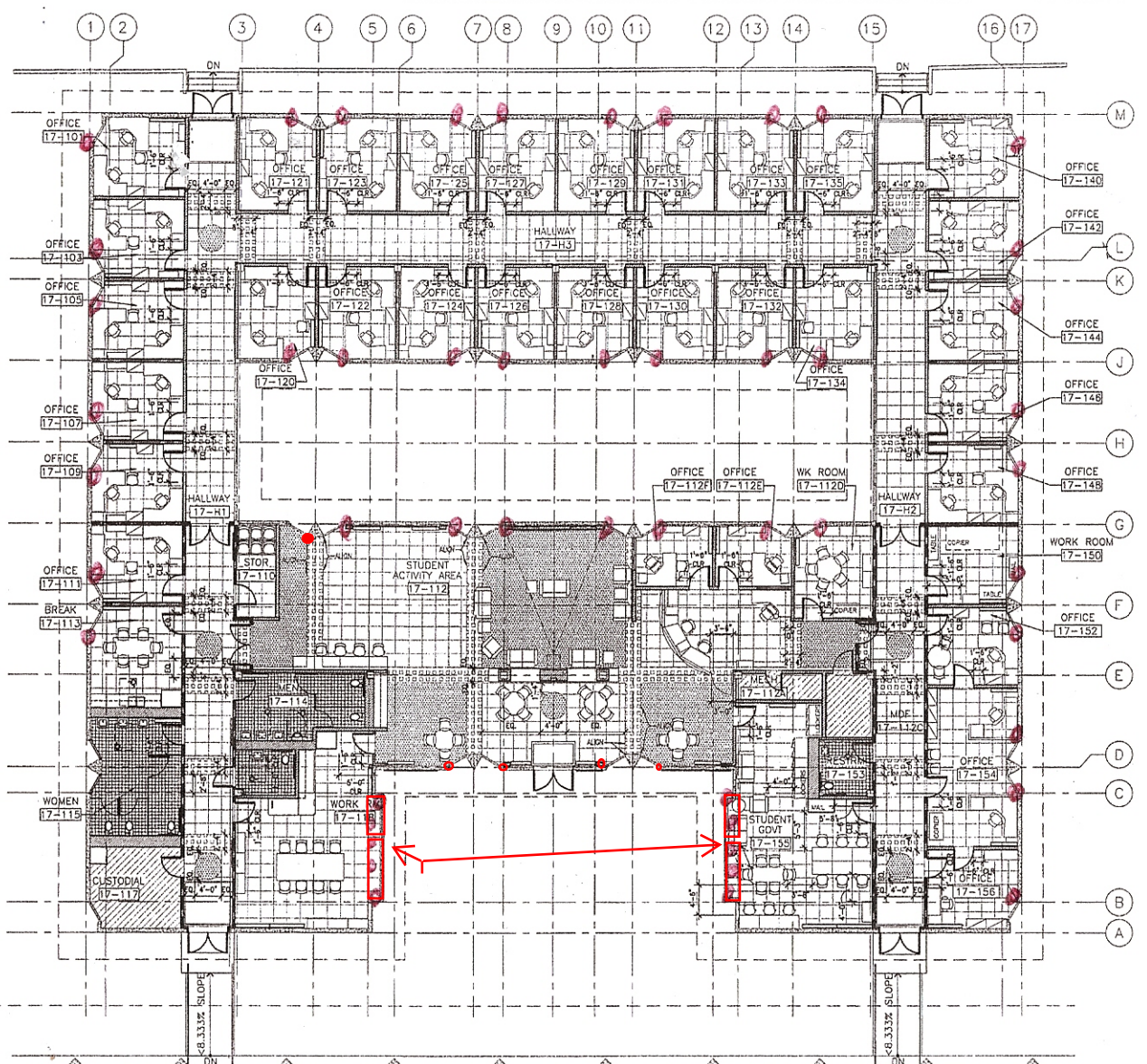




1 FINISH PLAN - BUILDING 12

A10.10





shade  
 ● controls  
 Bldg 17

California Textiles  
 10/26/09

ARCHITECT OF RECORD  
**noll & tam**  
 architects and planners  
 728 Heinz Avenue  
 Berkeley, CA 94710  
 510.648.8255  
 fax 510.648.3008

IDENTIFICATION STAMP  
 DIVISION OF THE STATE ARCHITECT  
 REGISTERED ARCHITECT  
 No. 110537  
 Date 10/29/09  
 (Seal of the State Architect)

**COLLEGE OF SAN MATEO**  
 BUILDING 12 AND 17  
 MODERNIZATION  
 SMCCCD  
 3401 CSM Drive  
 San Mateo, CA 94402  
 College of San Mateo  
 1700 W. Hillside Blvd.  
 San Mateo, CA 94402

SHEET TITLE  
**BUILDING 17  
 FURNITURE AND FLOOR  
 FINISH PLAN**

REVISIONS		
NO.	DATE	DESCRIPTION

DATE: AUGUST 27, 2009  
 DRAWN: CB  
 CHECKED: JC  
 SCALE: 1/8" = 1'-0"  
 MAT JOB NO: 2501  
 SHEET NUMBER

**LEGEND**

	CARPET A		CONCRETE
	CARPET B		MT1/MT2
	LINO 1		RADIATOR, SMD
	LINO 2		
	LINO 3		

Ref North  
  
 N

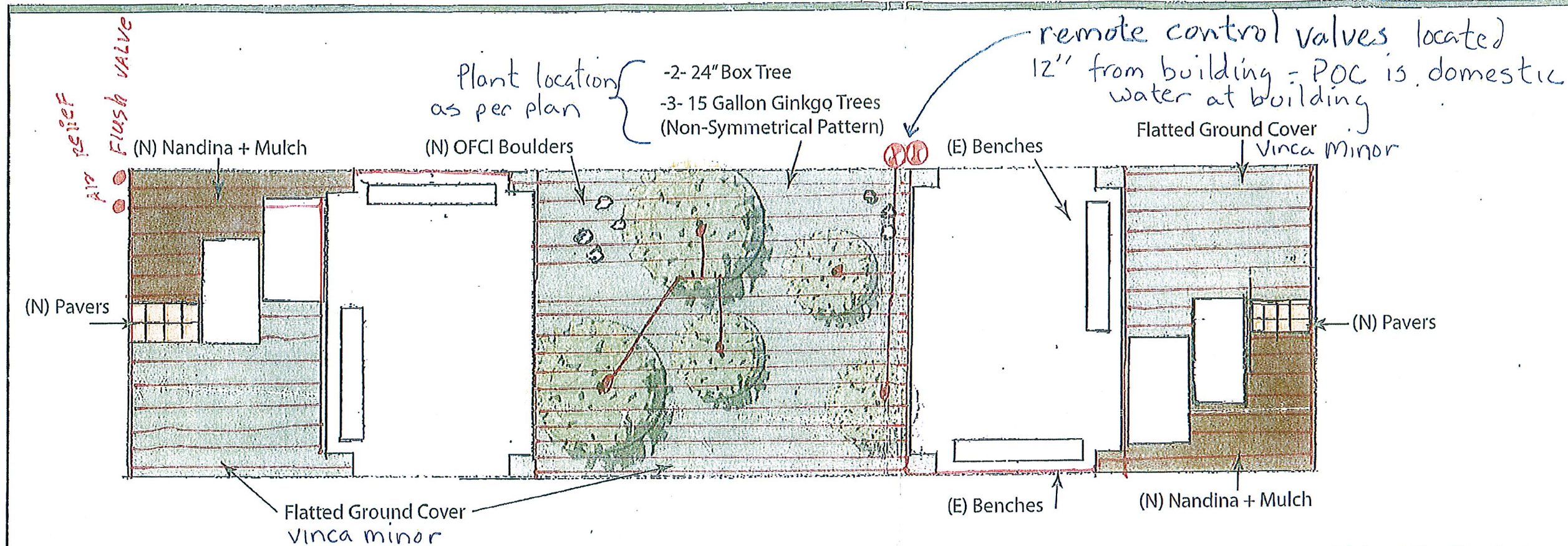
1 FURNITURE AND FLOOR FINISH PLAN - BUILDING 17  
 A10.20

1/8"=1'-0"

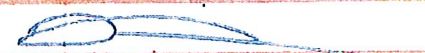
**A10.20**



Irrigation connected to College irrigation timers



- Install (N) Drip Irrigation System - Tie to Controller
- Mulch + Fertilize Planting Areas (Typ.)
- Pressure Wash Concrete Pads + Benches

**As Built**  
 Park West Landscape, Inc.  
 Date: 1-14-10 02/01/10  
 By: 

Bldg. 17 - Center  
 9/10/09

