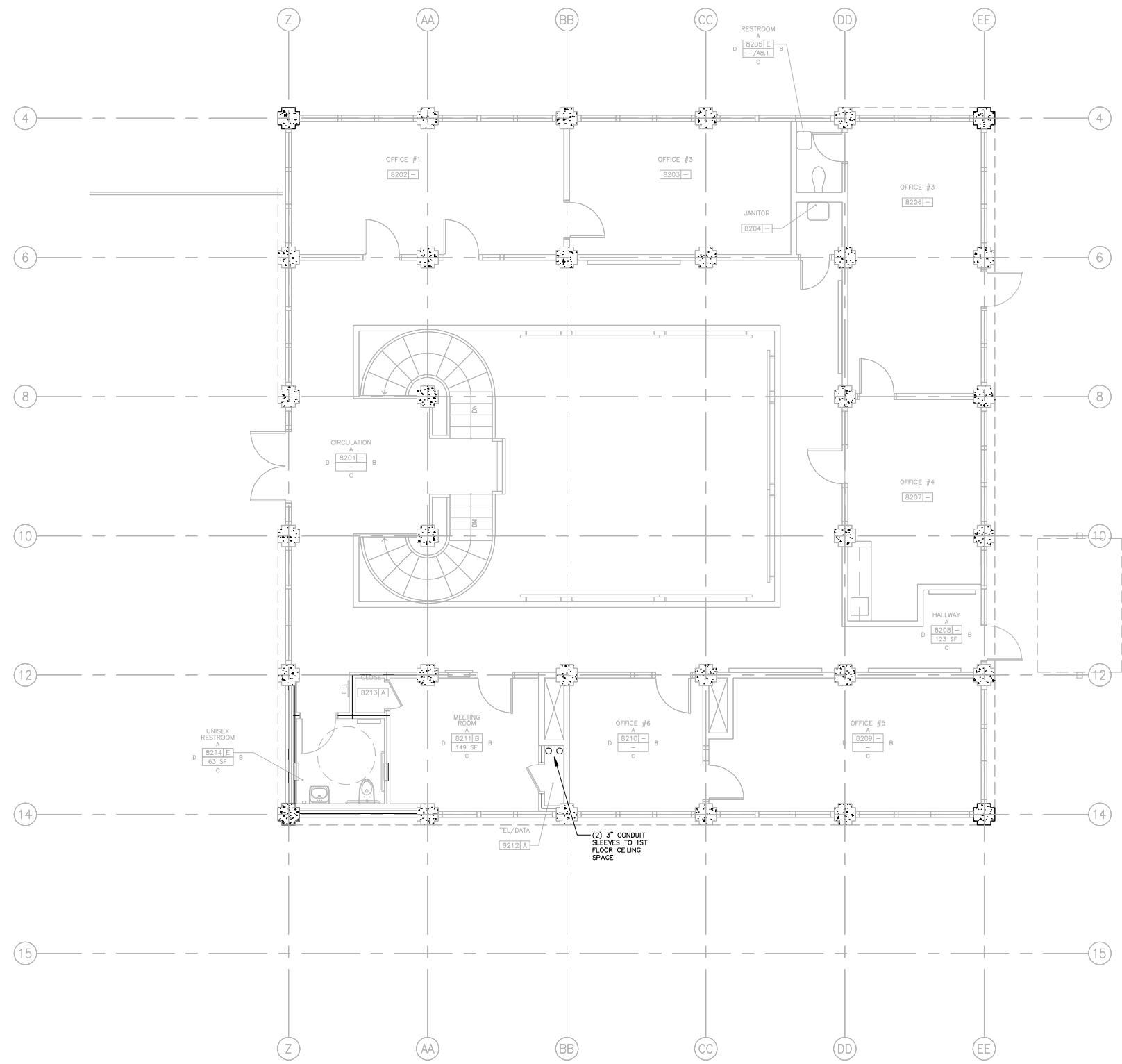




SHEET KEYNOTES:

- ① PROVIDE NEW RACK MOUNTED MODULAR PATCH PANELS IN SPACES WHERE OLD PANELS WERE REMOVED. COORDINATE EXACT LOCATION WITH OWNER.
- ② ROUTE ALL DATA, INTRUSION, ACCESS CONTROL, AND CCTV CABLE IN J-HOOK SYSTEM. ROUTE CABLES TO APPROPRIATE HEAD END EQUIPMENT DEVICES IN MDF.
- ③ PROVIDE (N) SECONDARY CLOCKS AND ROUTE CABLE TO (E) HEAD END EQUIPMENT IN MDF.
- ④ ROUTE ALL CABLES ASSOCIATED WITH CAMERAS, GLASS BREAK, CARD READERS, DOOR CONTACTS, ELECTRONIC DOOR LATCHES, AND REX DEVICES TO ACAMS PANELS IN MDF.



1 TEL/DATA COMM. SECOND FLOOR PLAN
 SCALE: 1/4"=1'-0"



ISSUANCE:
AS-BUILT DRAWINGS

PROPRIETARY INFORMATION
 NO PART OF THIS DOCUMENT MAY BE COPIED, REPRODUCED OR TRANSMITTED IN ANY FORM OR BY ANY MEANS WITHOUT PRIOR WRITTEN CONSENT OF ACTIVEXANT.

REVISIONS		
NO.	DATE	DESCRIPTION
1	3/19/09	REVISE FOR AS-BUILTS-ML

PROJECT:
 CANADA COLLEGE
 BUILDING, # 8 PHASE 2
 REVOLUTION PROJECT
 4200 FARM HILL BLVD.
 REDWOOD CITY, CA 94061

SHEET TITLE:
 TEL/DATA COMM.
 2ND FLOOR PLAN

DATE: 8/25/08
 DRAWN BY: BCHUA
 CHECKED BY: JLAMANTIA
 SCALE: AS NOTED
 JOB NO.: 109802306F25

SHEET NUMBER
SCS.2.02