

PROJECT RECORD SET

BUILDING 4
SKYLINE COLLEGE

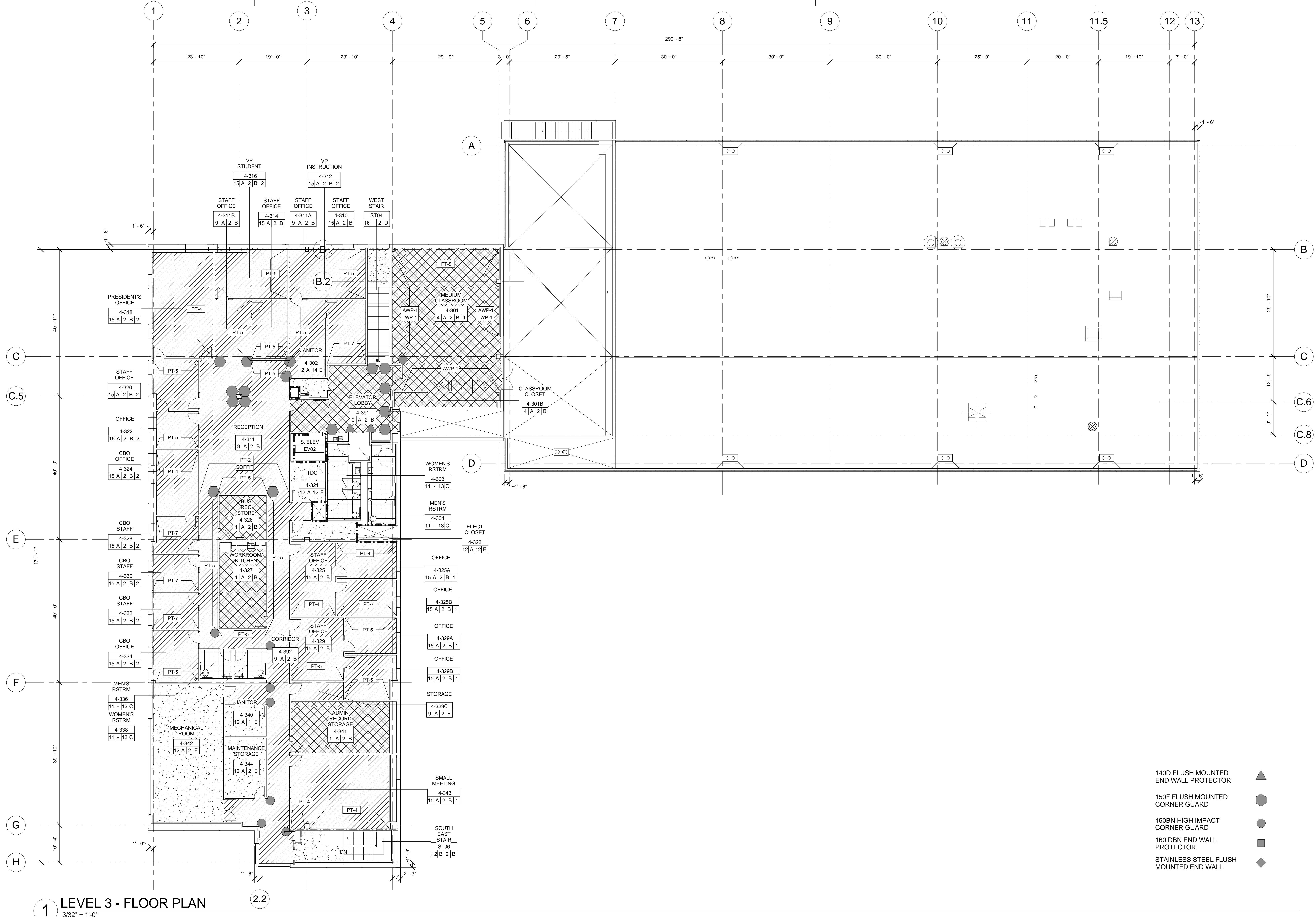
SAN MATEO COUNTY
COMMUNITY COLLEGE
DISTRICT

CIP2 DESIGN-BUILD
PROJECT
BUILDING 4

PROJECT NO.: 07012.00 DRAWN BY: Author
DATE: 07/09/08 CHECKED BY: Checker
SCALE: 3/32" = 1'-0"

SHEET TITLE:
LEVEL 3 OVERALL
FINISH FLOOR
PLAN

SHEET NO. AI-103



- 140D FLUSH MOUNTED END WALL PROTECTOR ▲
- 150F FLUSH MOUNTED CORNER GUARD ●
- 150BN HIGH IMPACT CORNER GUARD ●
- 160 DBN END WALL PROTECTOR ■
- STAINLESS STEEL FLUSH MOUNTED END WALL ◆

1 LEVEL 3 - FLOOR PLAN
3/32" = 1'-0"

NOTES

- REFER TO SPECIFICATION SECTION 090020 FOR INTERIOR FINISH FOR REFERENCE FOR ALL FINISH DESIGNATIONS.
- ACCENT WALL SHALL BE EGGSHELL FINISH ONLY.
- ALL DOOR FRAMES TO BE PAINTED WITH ADJACENT WALL COLOR COLOR IN SEMI-GLOSS, U.O.N.
- FLOOR FINISH TRANSITIONS TO BE LOCATED AT CENTERLINE OF DOOR LEAF, WHERE OCCURS IN CLOSED POSITION, U.O.N.
- PROVIDE TRANSITION STRIPS IN LOCATION WHERE CHANGE IN FLOORING OCCURS.
- PAINTED HOLLOW METAL DOOR AND FRAMES TO MATCH ADJACENT WALL PAINT COLOR, U.O.N.
- ALL CERAMIC FLOOR TILE SHALL HAVE A 1'-0" BORDER AROUND PERIMETER OF ROOM PER SMCCCD'S STANDARDS TYP. TILE SIZE SHALL BE 2'X2', U.O.N.

SYMBOLS LEGEND

ROOM NAME AND NUMBER FINISH IDENTIFIER FLOOR FIN. BASE FIN. WALL FIN. CEILING FIN. WINDOW TREATMENT	Name NUMBER F B W C V T	ACCENT PAINT COLOR TILE FINISH SPECIAL FINISH EXTENT OF FINISH	PT-4
LINOLEUM	CARPET	CERAMIC TILE	ALTRO MAXIS SAFETY FLOORING SHEET
			SEALED CONCRETE

LEGEND

FLOOR FINISH	FLOOR FINISH	BASE FINISH	WALL FINISH	WALL FINISH	CEILING FINISH	WINDOW TREATMENT
0 SEE LINOLEUM FLOOR PATTERN SHEETS	13 EFM-ENTRANCE FLOOR MAT	A RB-1 RUBBER BASE	1 PT-1 PAINT, SEMI GLOSS	13 CT-2 CERAMIC TILE WITH BUILT UP BASE, PT-1 ABOVE TILE TO B.O. CEILING	A NOT USED	1 RSW-1 MANUAL
1 RFS-1 LINOLEUM	14 RFS-7 SAFETY FLOOR	B WOOD BASE PER 19A-910	2 PT-2 PAINT, EGGSHELL	14 PT-1 TYP WITH FRP-1 4'X8' FIBERGLASS REINFORCED PANELS AT MOP SINK CORNER	B ACP-2 ACOUSTICAL PANEL CEILING	2 DOUBLE SHADE RSW-1 AND RSW-2
2 RFS-2 LINOLEUM	15 CP-2 CARPET, ROLL		3 PT-3 PAINT, EGGSHELL		C GYPSUM BOARD- PT-1	3 HLB-1
3 RFS-3 LINOLEUM	16 RST-1 RUBBER STAIR TREAD		4 PT-4 PAINT, EGGSHELL		D GYPSUM BOARD- PT-2	4 RSW-1 MOTORIZED
4 RFS-4 LINOLEUM	17 PRECAST CONCRETE STAIRS		5 PT-5 PAINT, EGGSHELL		E EXPOSED	
5 RFS-5 SAFETY FLOOR	18 RFS-SS SAFETY FLOOR LINOLEUM SEE FLOOR PATTERN SHEET		6 PT-6 PAINT, EGGSHELL			
6 RFS-6 SAFETY FLOOR			7 PT-7 PAINT, EGGSHELL			
7 CPT-1 CARPET TILE			8 GT-1 GLASS TILE			
8 CPT-2 CARPET TILE			9 PCT-1 PORCELAIN TILE			
9 CPT-3 CARPET TILE			10 NOT USED			
10 CP-1 CARPET, ROLL			11 NOT USED			
11 CT-1 CERAMIC TILE WITH TILE BORDER			12 4' X 8' PLYWOOD, 8' HEIGHT TYP ON GYPSUM BOARD FINISH PT-2 VERIFY LOCATIONS			
12 COATED CONCRETE-PEDA-GARD M						

All drawings and written material appearing herein constitute original and unpublished work of the Architect/Engineer and may not be duplicated, used or disclosed without consent of Architect/Engineer.
If this drawing is not 30"x42", then the drawing has been revised from its original size. Noted scales must be adjusted. This line should be equal to one inch.