

**GENERAL NOTES**

1. REFER TO ROOM FINISH SCHEDULE (SHT AI-101, 102 AND 103) AND FINISH SCHEDULE 09020 FOR ADDITIONAL NOTES AND INFORMATION.
2. PROVIDE BLOCKING AT ALL CASEWORK, GRAB BARS AND ACCESSORIES.
3. ALL CABINETS & DRAWERS TO BE LOCKABLE, TYP. ON ALL INTERIOR.
4. SEE SHEET AI-101-103 FOR FINISH SCHEDULE.
5. SEE SHEET A-701 FOR DOOR SCHEDULE.
6. SEE SHEET A-714-744 FOR WINDOW SCHEDULE.
7. SEE SHEET AC-201-203 FOR REFLECTED CEILING PLAN.
8. ALL COUNTER SINKS HAVE PAPER TOWEL DISPENSER AND SOAP DISPENSER.
9. SEE 1/A-900 TYPICAL WALL MOUNTED FIXTURE GROUPINGS.
10. SEE 10/A-914 FOR TILE AT TYP. SHOWER FLOOR. SEE 11/A-914 FOR TYP. TILE FLOOR - MORTAR BED.

**KEY NOTES - INTERIOR ELEVATION**

PL-1 SEE FINISH SCHEDULE FOR FINISHES SECTION 090020

- 1 GYPSUM BOARD SOFFIT, SEE DETAIL 9/A-911
- 2 SUSP. ACOUSTICAL CEILING, SEE DETAIL 1/A-920
- 3 WASHER/DRYER, OFOI
- 4 DOOR, PER SCHEDULE
- 5 WINDOW, PER SCHEDULE
- 6 SOAP DISPENSER, OFOI
- 7 ELEVATOR DOOR
- 8 FIRE HORN/STROBE
- 9 STRUCTURAL STEEL BRACING, SSD.
- 10 BASE, SEE FINISH SCHEDULE
- 11 CASEWORK, SEE FINISH SCHEDULE AND CASEWORK DETAILS
- 12 COUNTER TOP WITH BACKSPLASH
- 13 COUNTER TOP WITHOUT BACKSPLASH
- 14 MARKER BOARD, SEE DETAIL 16/A-900
- 15 CORNER GUARD, SEE DETAIL 7/A-913
- 16 CHEMICAL AUTO DILUTION SYSTEM, OFOI
- 17 MIRROR
- 18 STAIR
- 19 LIGHTING, SEE ELECTRICAL DRAWING
- 20 HANDRAIL
- 21 GUARDRAIL, 42" MIN. A.F.F.
- 22 SINK, SEE PLUMBING DRAWING
- 23 WALL MOUNT RACK FOR MOPS, BROOM, ETC
- 24 RECEPTION DESK
- 25 UTILITY SHELF W/ MOP/BROOM HOLDERS & RAG HOOKS
- 26 APPLIANCE BY OWNER, OFOI
- 27 VENTILATION HOOD (SEE MECH. DWG.) - WALL MOUNTED
- 28 ADA SHOWER, SEE 17/A-900
- 29 RECESSED FIRE EXTINGUISHER CABINET, F.E. WITH CURRENT TAG, SEE DETAIL 8/A-900
- 30 PARTIAL HEIGHT WALL.
- 31 ADA LOCKER @ 48" MAX. A.F.F. WITH SHELVES @ 15" AND PROVIDE U-SHAPED LATCH, SEE 14/A-900
- 32 LOCKER, SEE DETAIL 15/A-900 FOR ANCHORAGE
- 33 WALL PAINTED GYPSUM, PER FINISH SCHEDULE, TYP.
- 34 BEYOND EXTERIOR CURTAIN WALL
- 35 RECESSED PRODUCT DISPLAY SHELF
- 36 LOCKER ROOM BENCH, OFOI
- 37 SIGNAGE LETTERS
- 38 ACCENT WALL TILE, SEE FINISH SCHEDULE 090020
- 39 TACK BOARD AT SIDE WALL IN CLASSROOM TYP., OFOI
- 40 WALL MOUNTED FLAT DISPLAY, OFOI
- 41 INTERIOR ALUMINUM FRAMED STOREFRONT
- 42 LCD SCREEN, OFOI
- 43 PROJECT SCREEN, SEE T.A.D.
- 44 WAINSCOT
- 45 CHAIR RAIL
- 46 VENDING MACHINE, OFOI
- 47 WALL-MOUNTED WARMING UNIT, OFOI
- 48 REFRIGERATOR, OFOI
- 49 FIRE HOSE VALVE CABINET, SEE 1 & 2/A-913
- 50 LAUNDRY SINK, S.P.D.
- 51 4'X8' FRP @ SINK
- 52 PAPER TOWEL DISPENSER, OFOI
- 53 CUSTODIAN'S IN-BOX, CLIP BOARD AND EMERGENCY RESPONSE INFORMATION, OFOI
- 54 FIRE PLACE
- 55 ENTERTAINMENT EQUIP. CABINET
- 56 SAUNA
- 57 SEISMIC JOINT COVER, WHERE OCCURS, SEE A-853
- 58 OUTLET/DATA/PHONE JACK FOR COMPUTER INSIDE/BEHIND CABINET, S.E.D.
- 59 WALL MOUNTED SHELVES
- 60 ADJUSTABLE SHELVING
- 61 SMALL TOOL AND BRUSH ORGANIZER, OFOI
- 62 WALL TILE, SEE FINISH SCHEDULE DETAIL 9/A-502
- 63 CLOCK, S.E.D.
- 64 COURTESY PHONE
- 65 FIRE ANNUNCIATOR, SEE F.A. DRAWING
- 66 EMERGENCY EVACUATION PLAN
- 67 PENCIL SHARPENER NEAR DOOR @ EACH CLASSROOM
- 68 HAIR LAB STATION, SEE 1/A-930 FOR DETAILS
- 69 SIGNAGE, SEE SHEET A-901 FOR DETAILS
- 70 4'X8' ACOUSTIC WALL PANELS
- 71 HAIR WASH SINK, S.P.D.
- 72 ALUMINUM FASCIA MATCH ADJACENT WINDOW FRAME FINISH

NO. ISSUES/REVISIONS DATE

**PROJECT RECORD SET**

**BUILDING 4 SKYLINE COLLEGE**

SAN MATEO COUNTY COMMUNITY COLLEGE DISTRICT

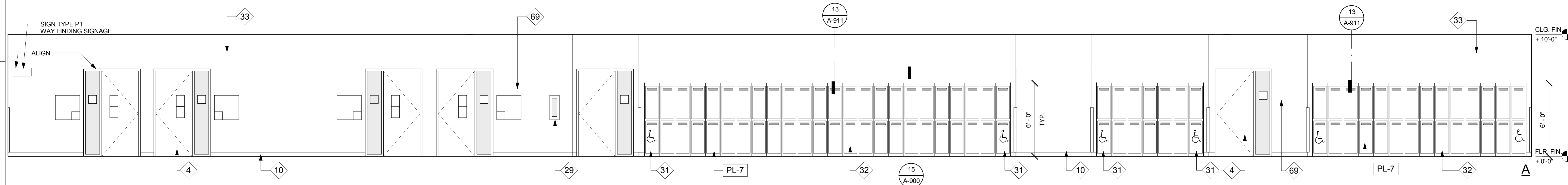
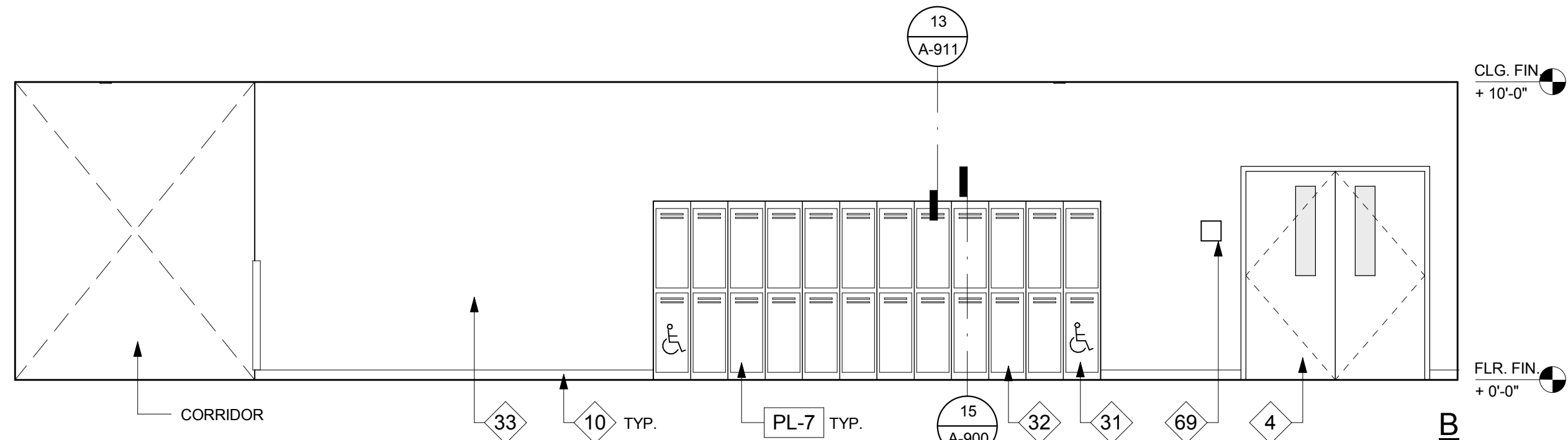
**CIP2 DESIGN-BUILD PROJECT BUILDING 4**

PROJECT NO.: 07012.00 DRAWN BY: BC  
DATE: 05/06/08 CHECKED BY: LG  
SCALE: 1/4" = 1'-0"

**SHEET TITLE:  
INTERIOR ELEVATIONS (ENTRY LOBBY & CORRIDOR)**

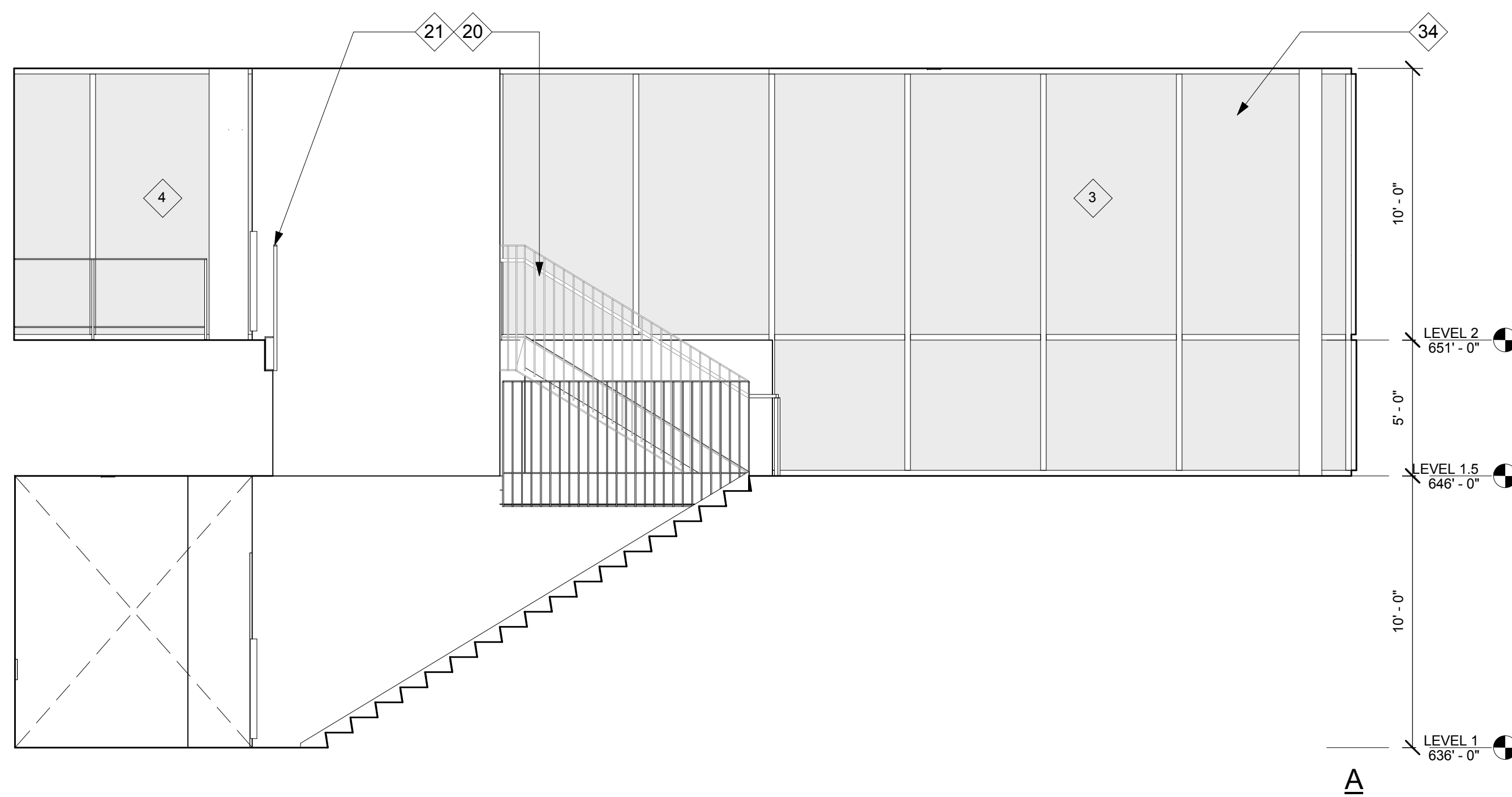
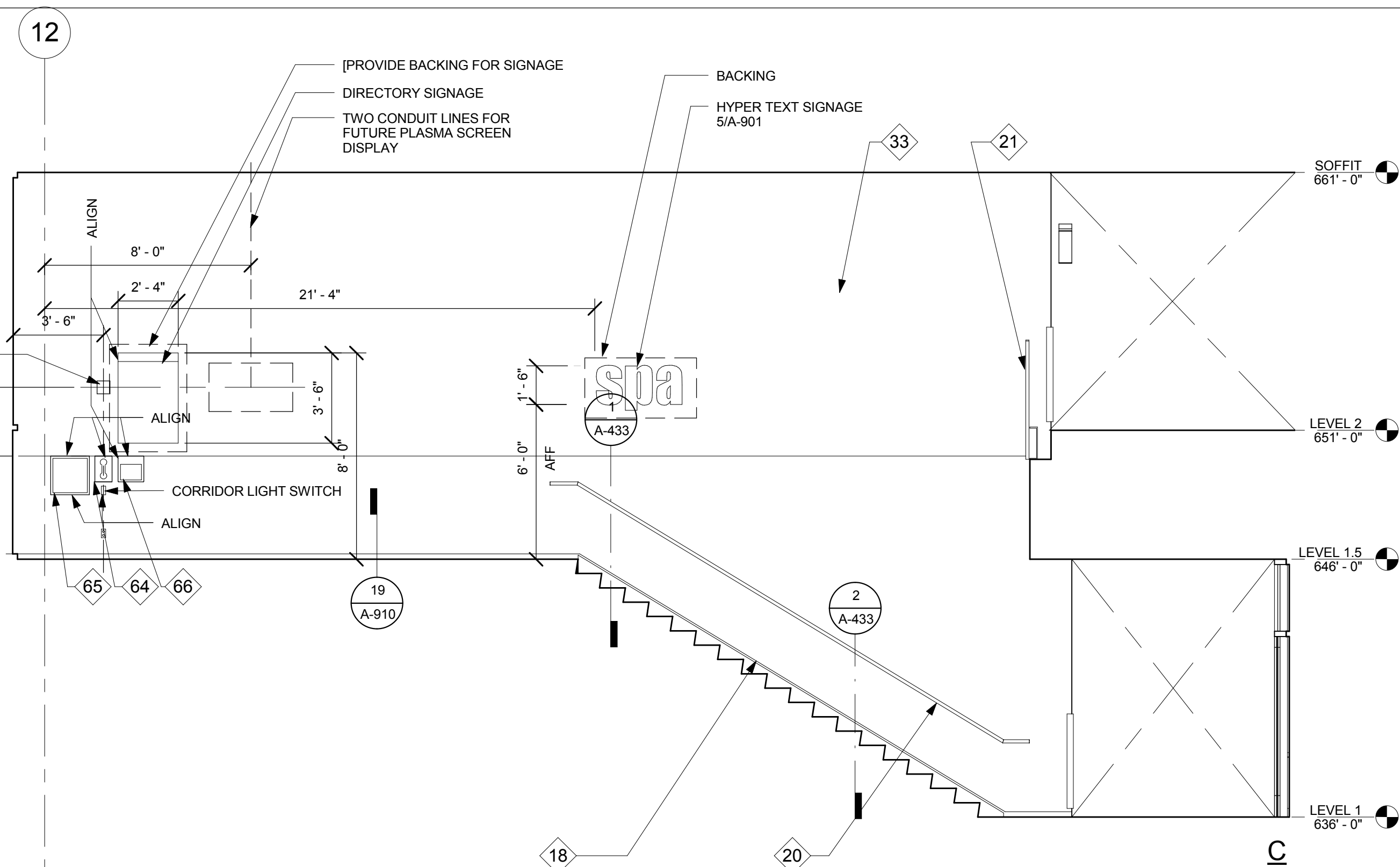
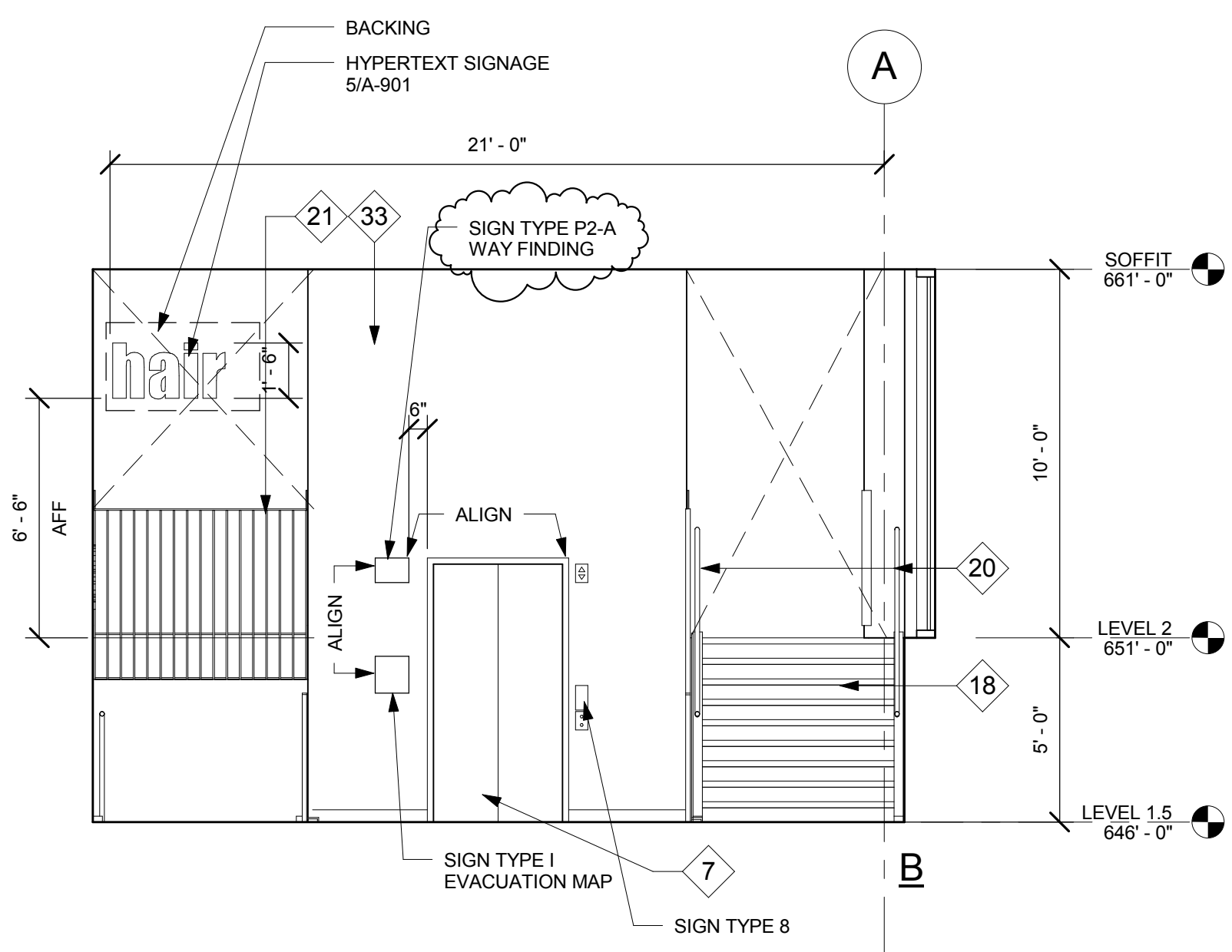
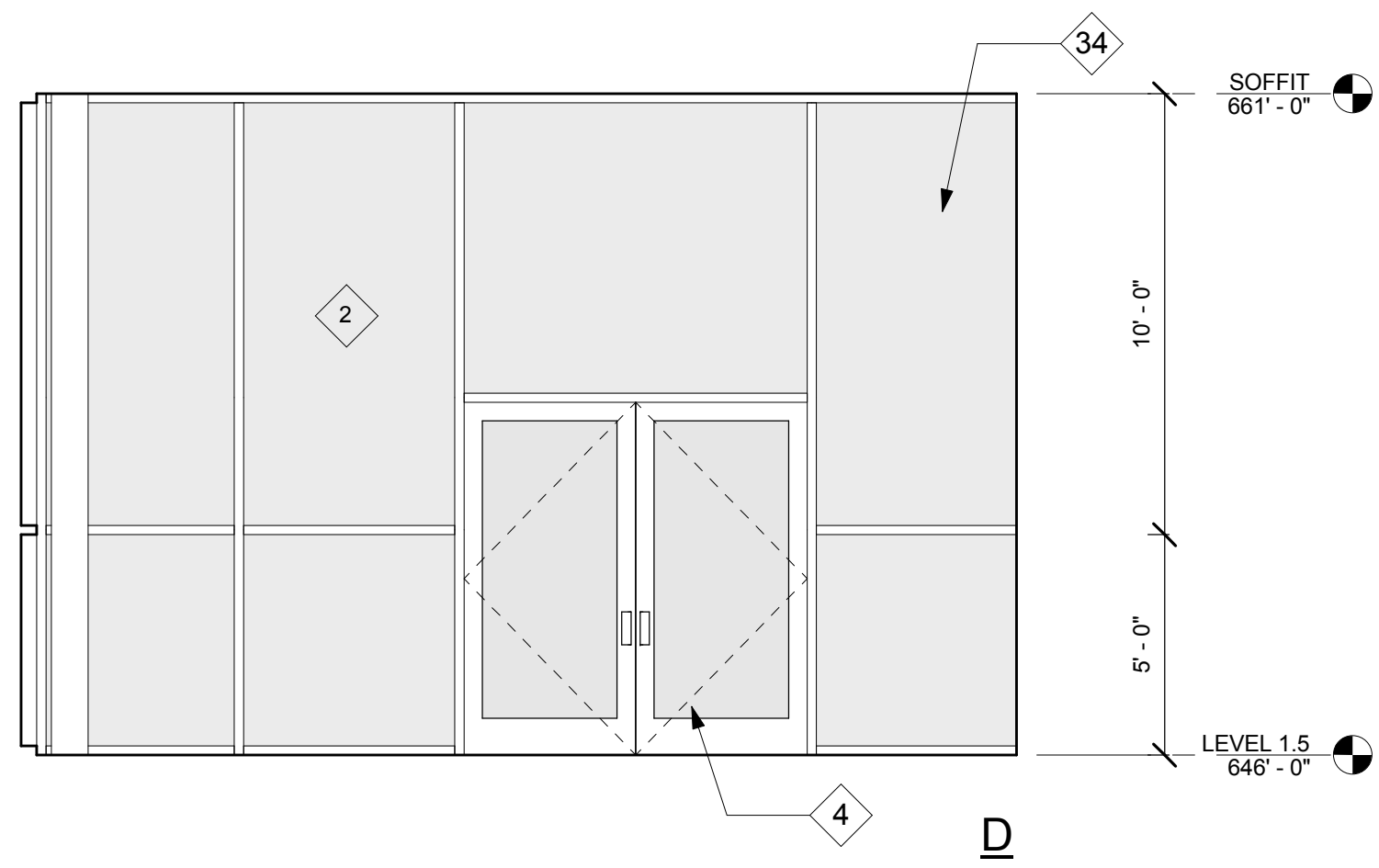
SHEET NO.

A-504



**2 4-292 CORRIDOR ELEVATIONS**

1/4" = 1'-0"



**1 4-291 ENTRY LOBBY**

1/4" = 1'-0"