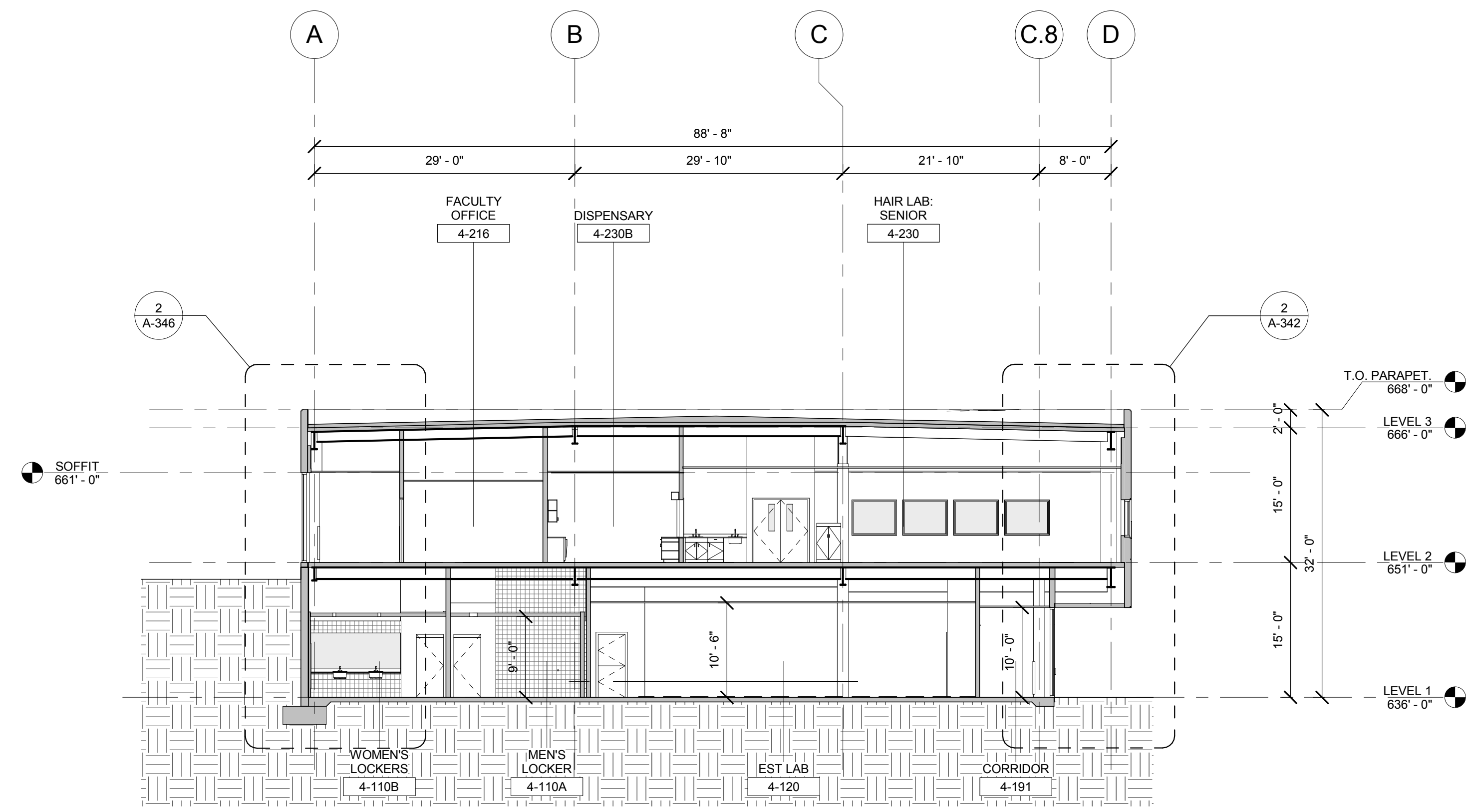
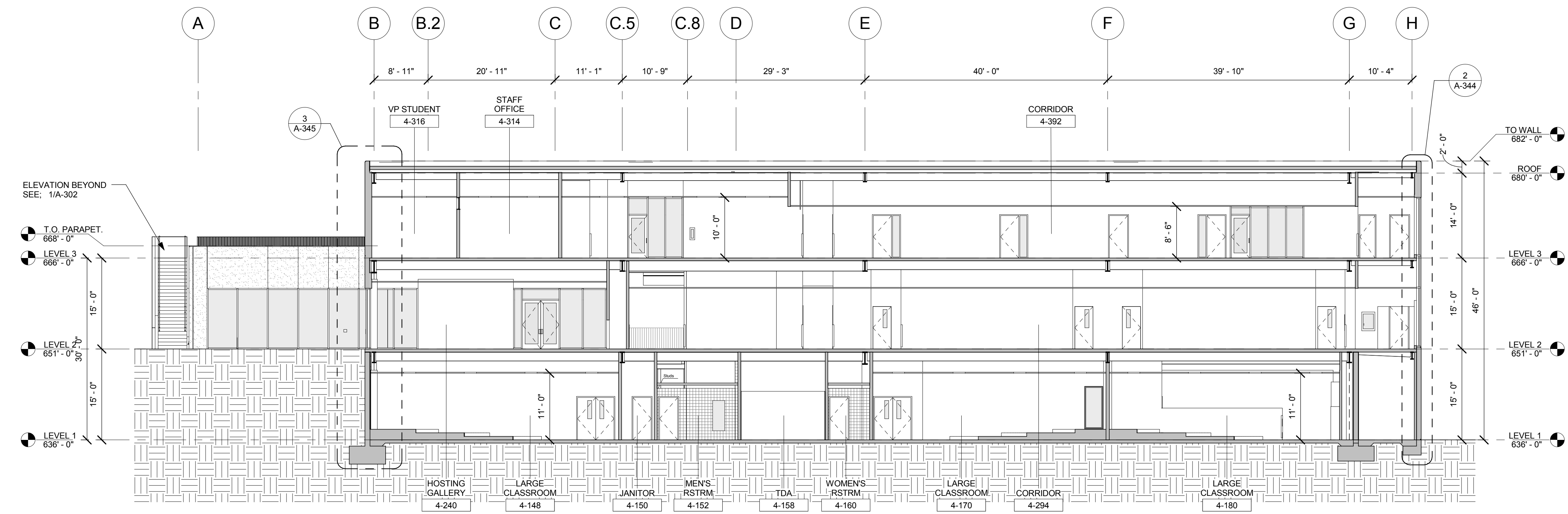


3 TRANSVERSE SECTION AT CLASSROOMS
3/32" = 1'-0"



2 TRANSVERSE SECTION AT LABS
3/32" = 1'-0"



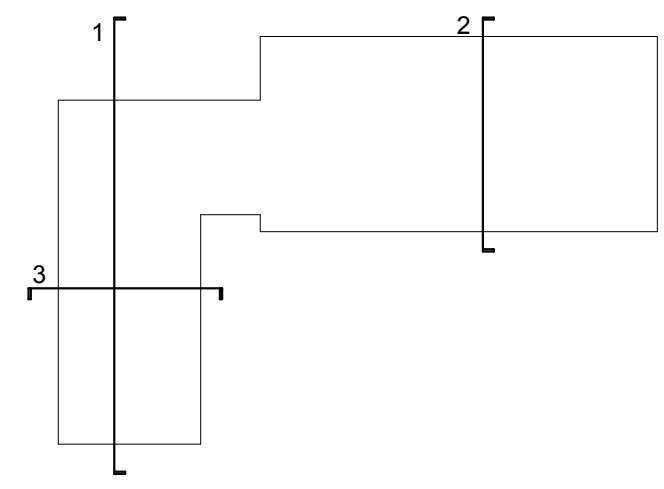
1 TRANSVERSE SECTION AT LIBRARY SQUARE
3/32" = 1'-0"

NO.	ISSUES/REVISIONS	DATE

PROJECT
RECORD SET

BUILDING 4
SKYLINE COLLEGE
SAN MATEO COUNTY
COMMUNITY COLLEGE
DISTRICT

CIP2 DESIGN-BUILD
PROJECT
BUILDING 4



PROJECT NO.: 07012.00 DRAWN BY: MC
DATE: 04/28/08 CHECKED BY: LG
SCALE: As indicated

SHEET TITLE:
BUILDING
SECTIONS

All drawings and written material appearing herein constitute original and unpublished work of the Architect/Engineer and may not be duplicated, used or disclosed without consent of Architect/Engineer.
If this drawing is not 30"x42" then the drawing has been revised from its original size. Note: scales must be adjusted. This line should be equal to one inch.