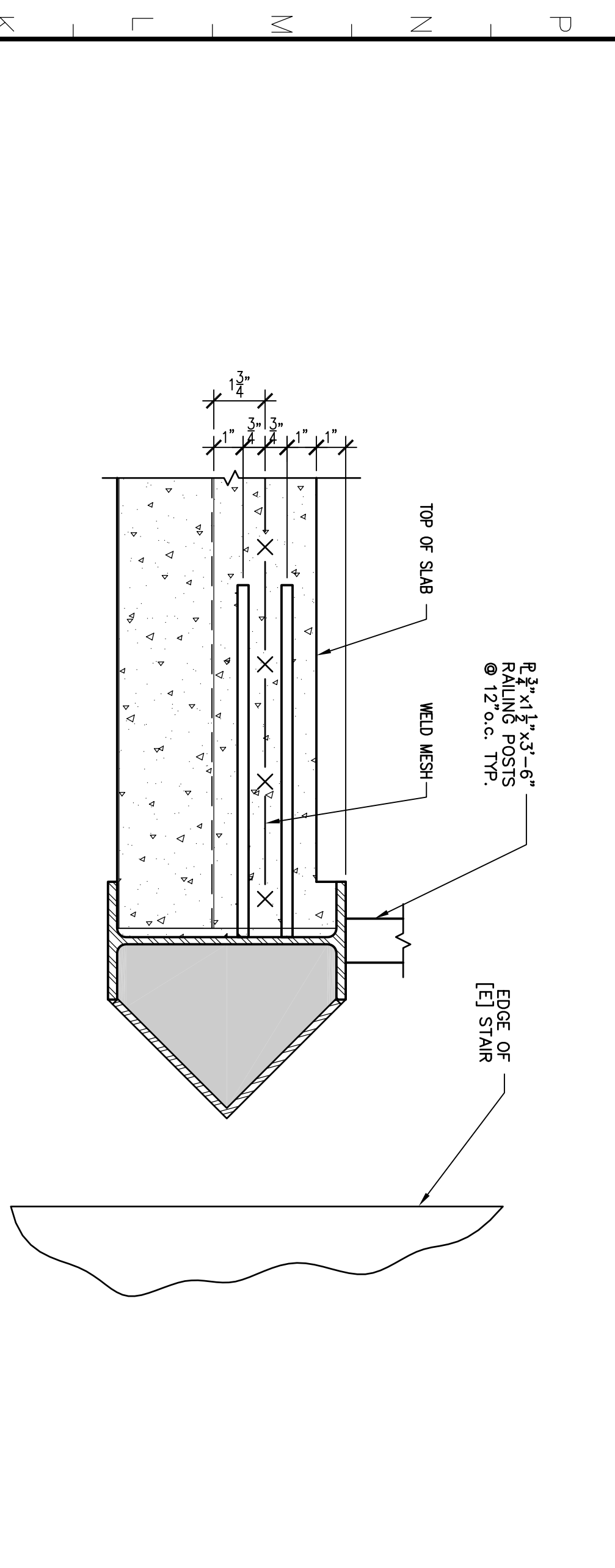
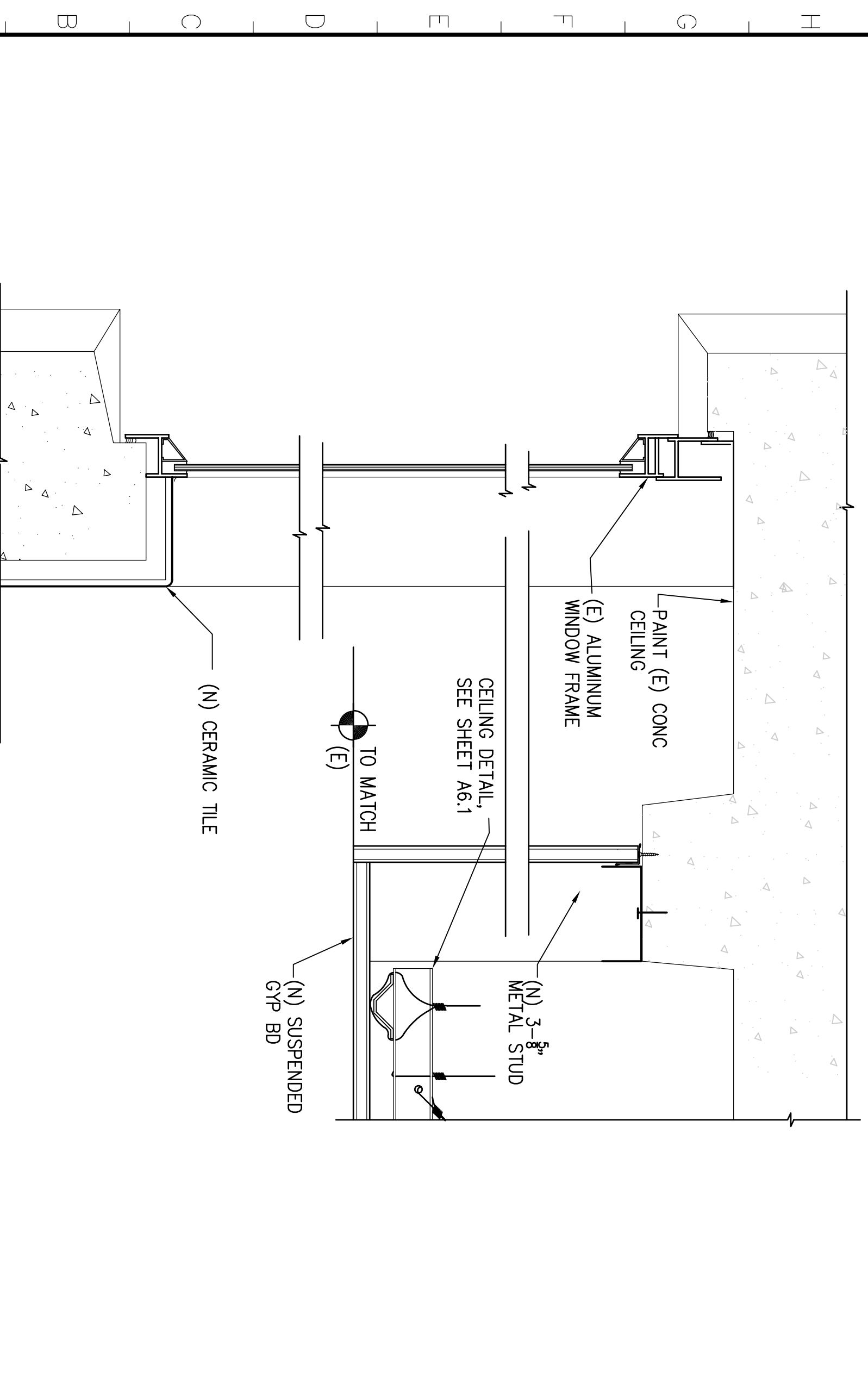


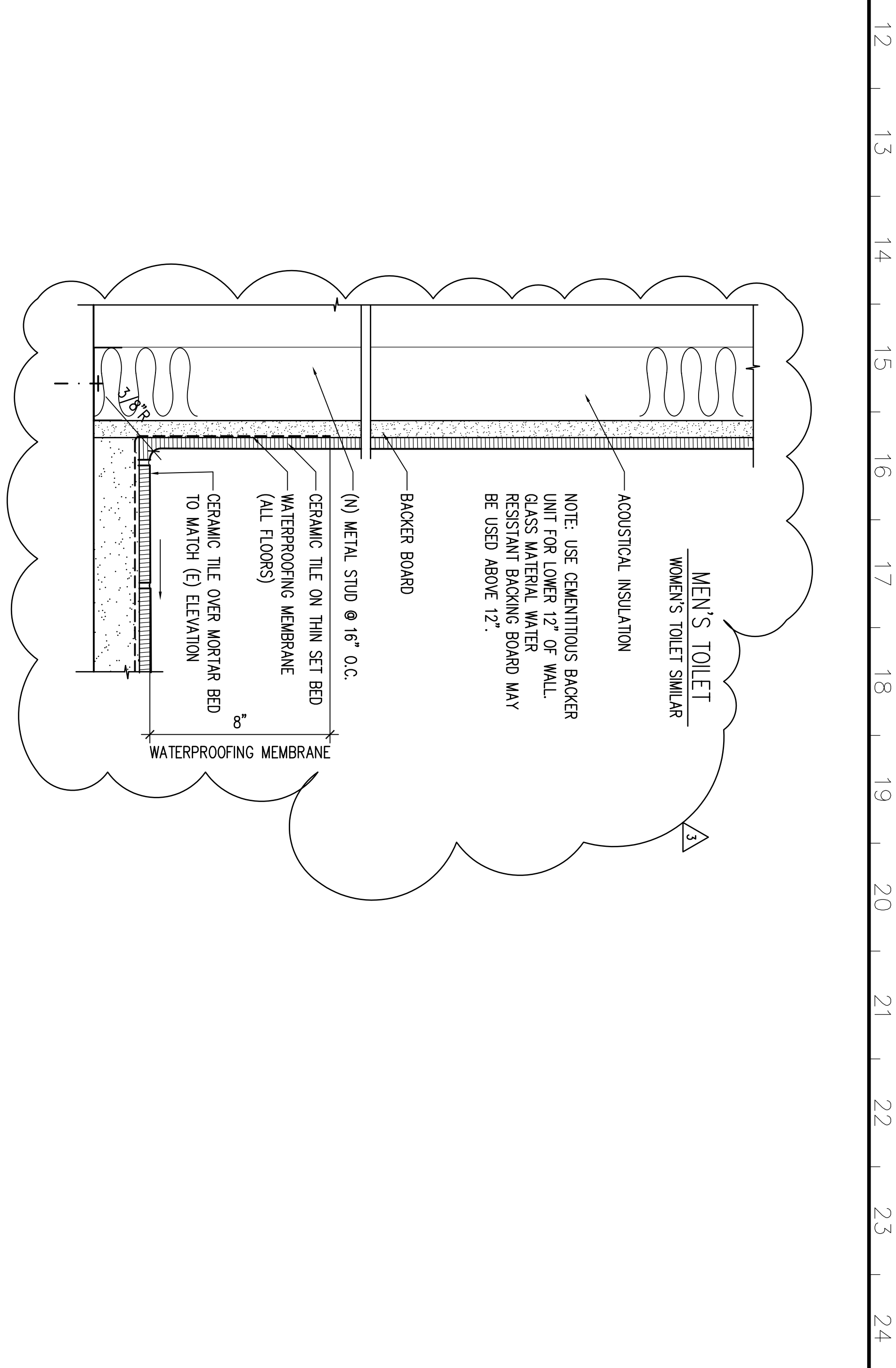
10 DETAIL AT SOFFIT AND CONC WALL
SCALE: 3/8"=1'-0"



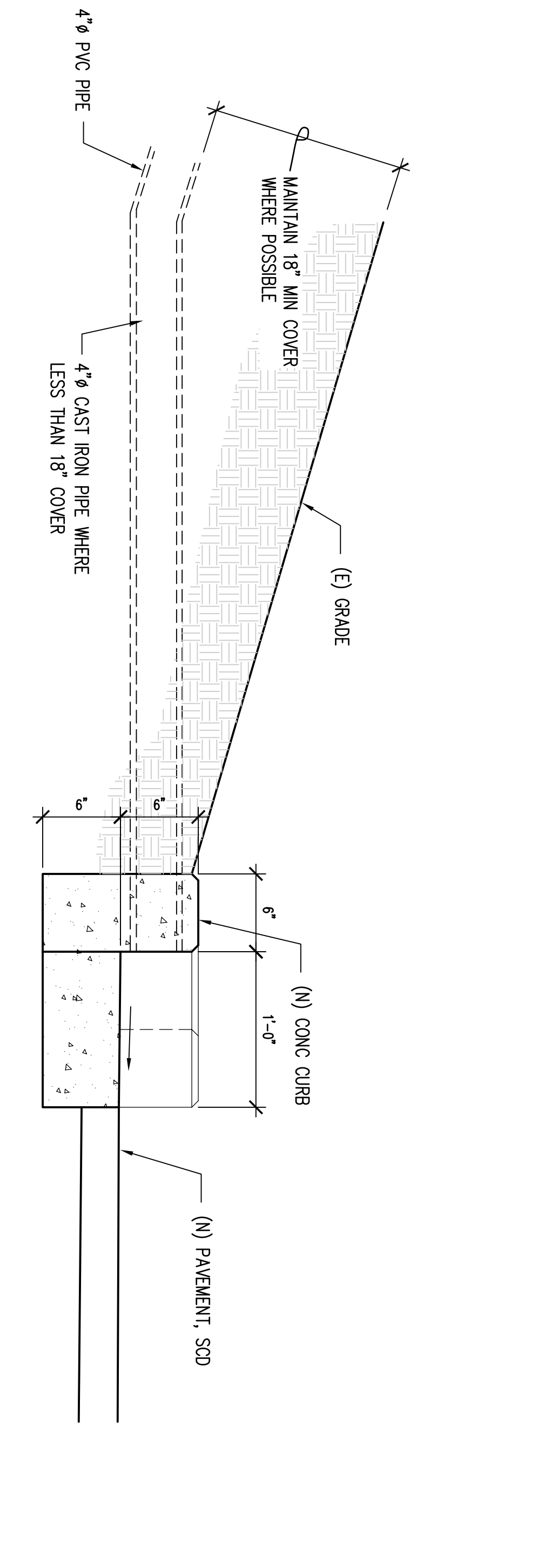
11 EDGE AT STAIR AND ELEVATOR LANDING
SCALE: 3/8"=1'-0"



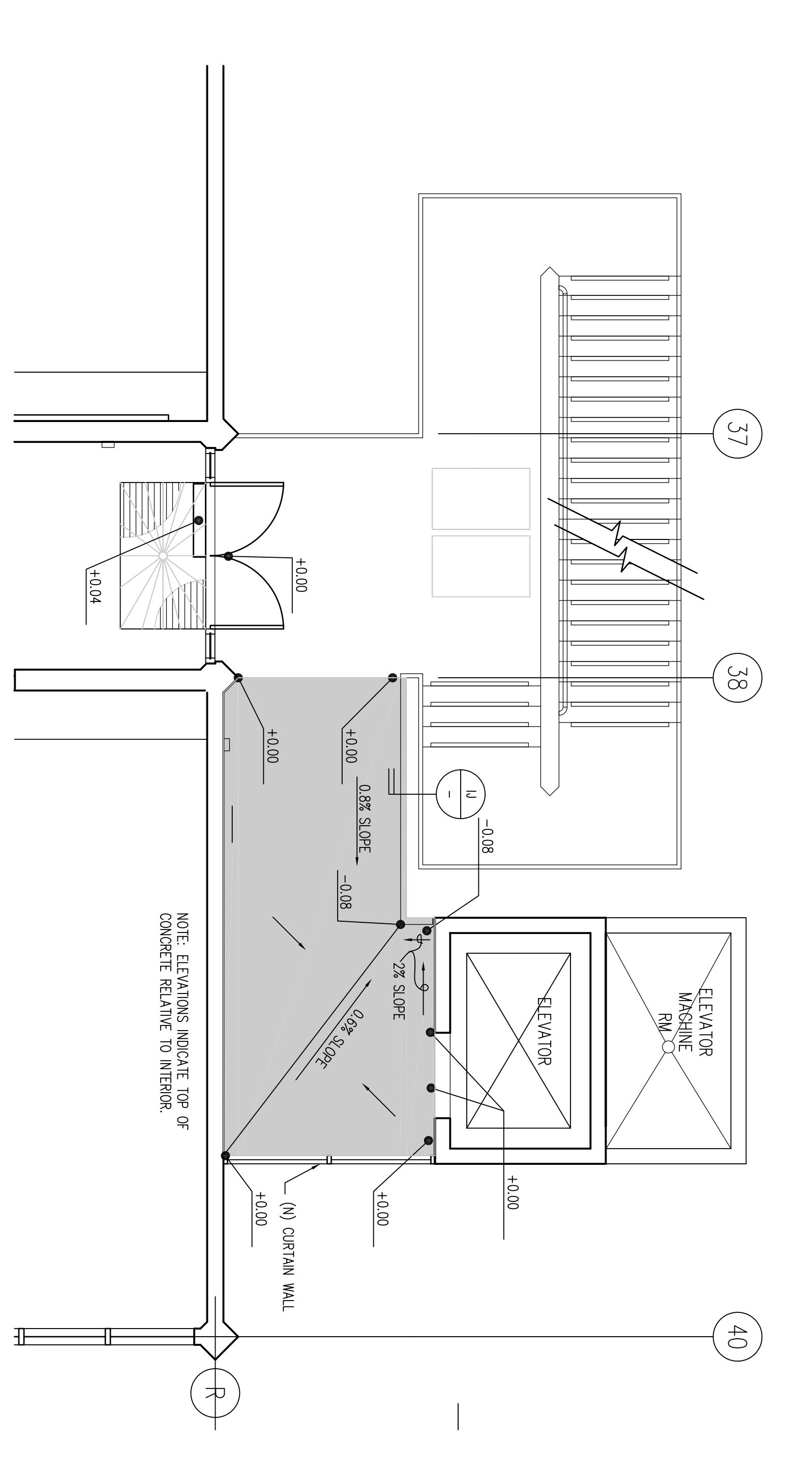
1A TERMINATE AT CEILING AT WOMEN'S RESTROOM (FIRST AND SECOND FLOORS)
SCALE: 3/8"=1'-0"



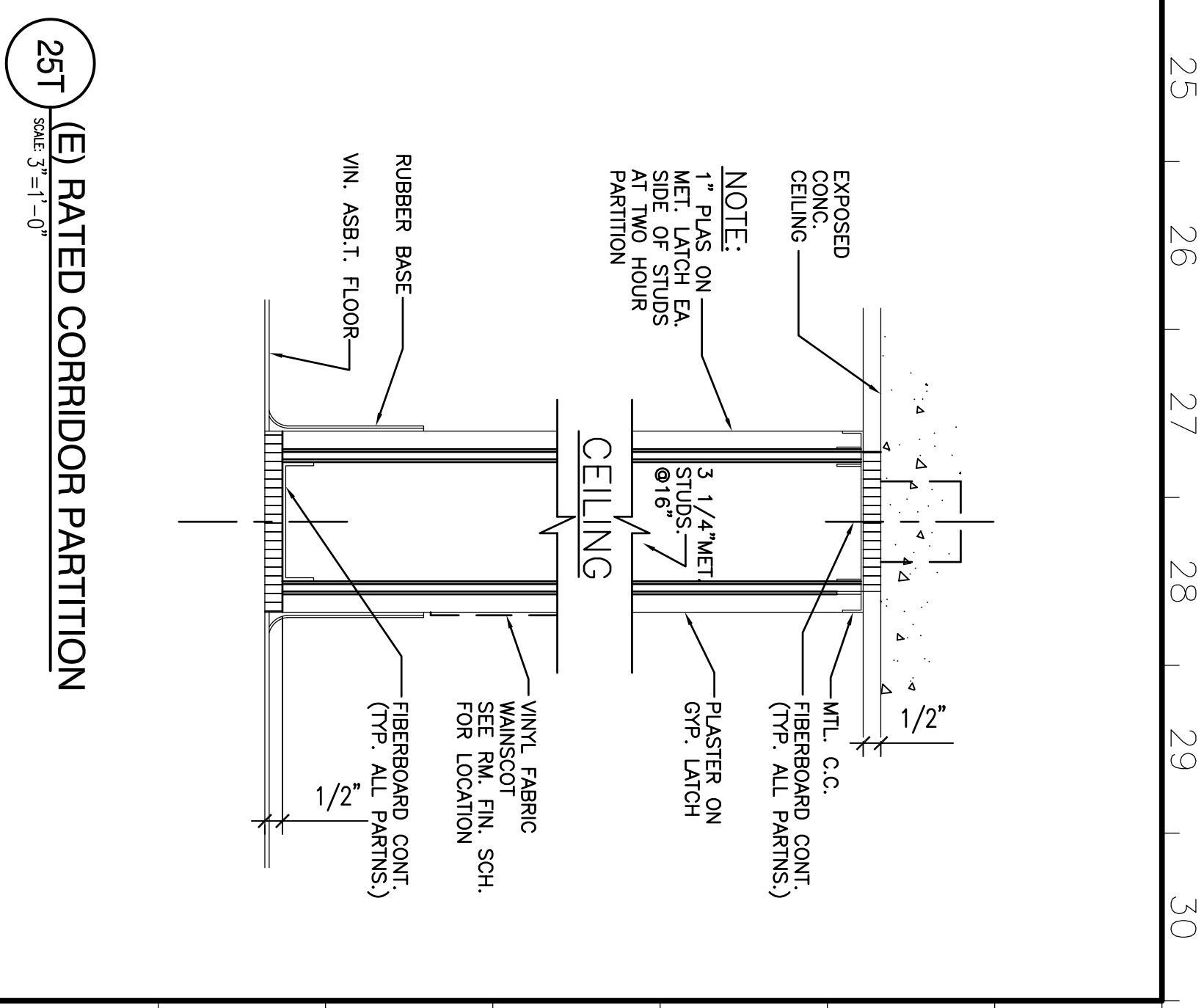
120 PLUMBING WALL AT TOILET (ALL WALLS)
SCALE: 1/2"=1'-0"



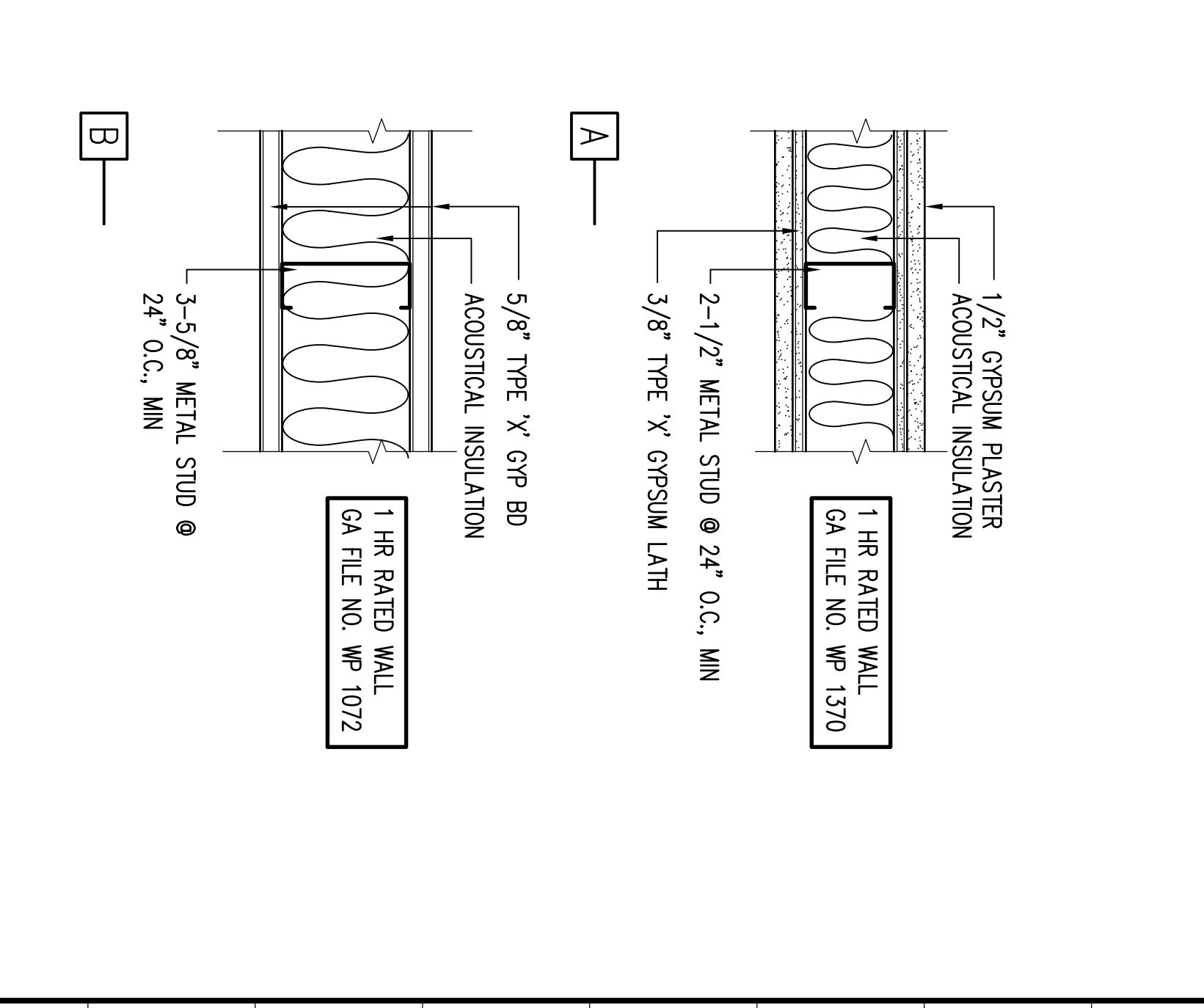
121 SUBDRAIN DISCHARGE AT PARKING
SCALE: 1/2"=1'-0"



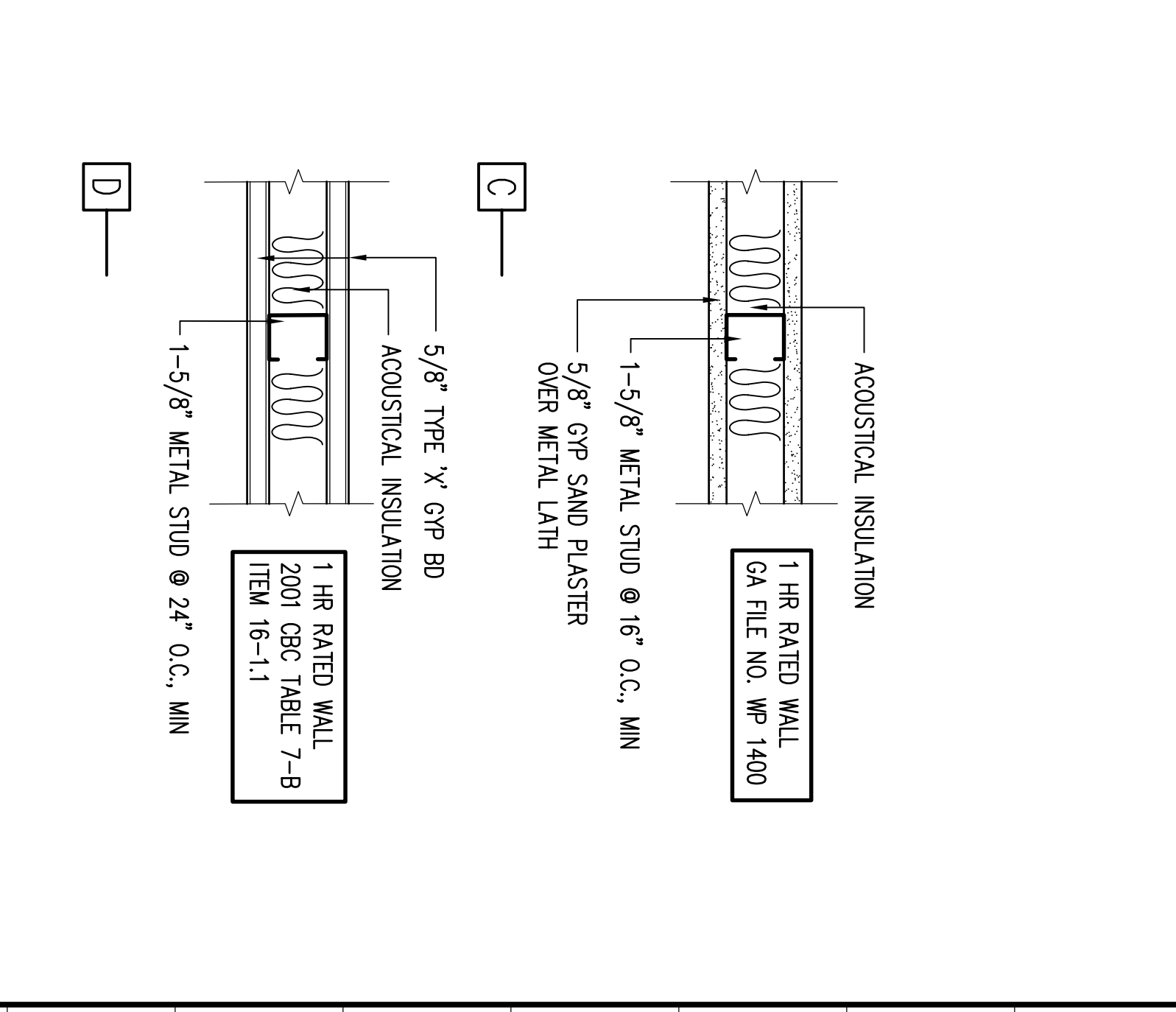
12A LANDING AT ELEVATOR (FIRST AND SECOND FLOOR)
SCALE: 1/4"=1'-0"



25T (E) RATED CORRIDOR PARTITION
SCALE: 3/8"=1'-0"



25J RATED WALL TYPES
SCALE: 3/8"=1'-0"



25A RATED WALL TYPES
SCALE: 3/8"=1'-0"

REVISION	DESCRIPTION	INITIAL	DATE
3	RECORD DRAWING	RI	10/0/09
2	PRE-APPLICATION REVIEW		02/26/09
1	ISSUED FOR PERMIT		03/03/09
	ISSUED FOR BID		03/03/09
	ISSUED FOR CONSTRUCTION		

INTERACTIVE
ARCHITECTURE • PLANNING • ENGINEERING

117 PARK PLACE
POINT RICHMOND
CALIFORNIA 94801
(910) 238-7435
(FAX) 232-45225
http://www.interactive.com

BUILDING NO. 18 (NORTH HALL) MODERNIZATION

COLLEGE OF SAN MATEO
1700 WEST HILLSDALE BLVD,
SAN MATEO, CA 94402

SAN MATEO CO. COMMUNITY COLLEGE DISTRICT

MOD A8.5

DR. GREGORIO SANCHEZ
OFFICE OF RESILIENT SERVICES
APPL 106047
DATE: 1/3 SS

APPROVED
DR. OF THE STATE ARCHITECT
APPL 106047
DATE: 1/3 SS

PREPARATION AND REVIEW
2007-06-02

DRAWN BY: BA
DESIGNER: NIS
CHECKER: NIS
PEER REVIEW: NIS

SHEET NUMBER: MOD A8.5