

A



B



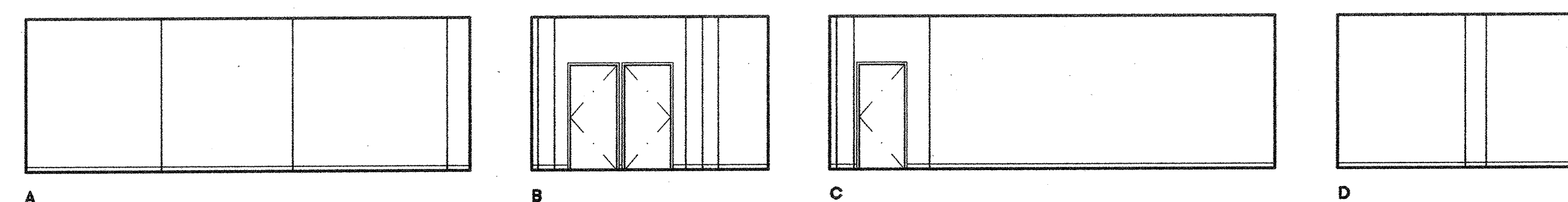
C



D

SCALE 1/8" = 1'-0"

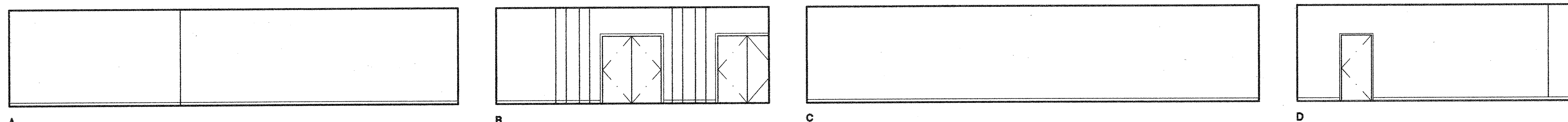
CAFETERIA RM. 5-320 9



A B C D

SCALE 1/8" = 1'-0"

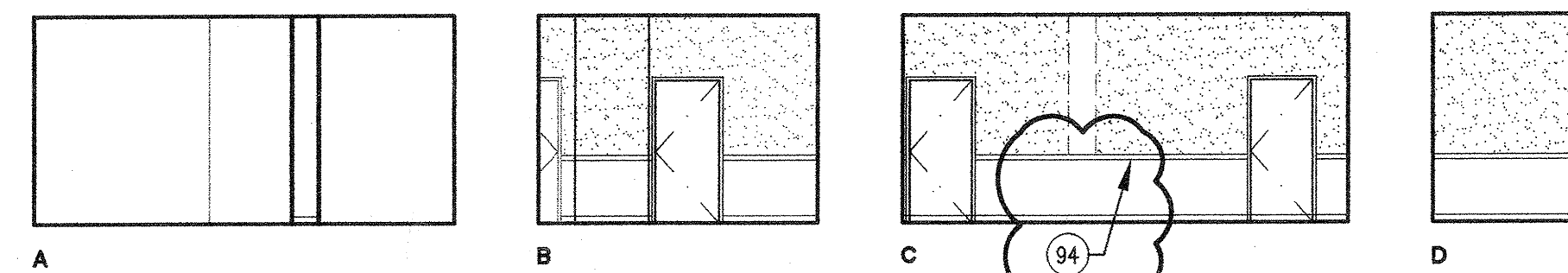
DISHWASHING RM. 5-321 10



A B C D

SCALE 1/8" = 1'-0"

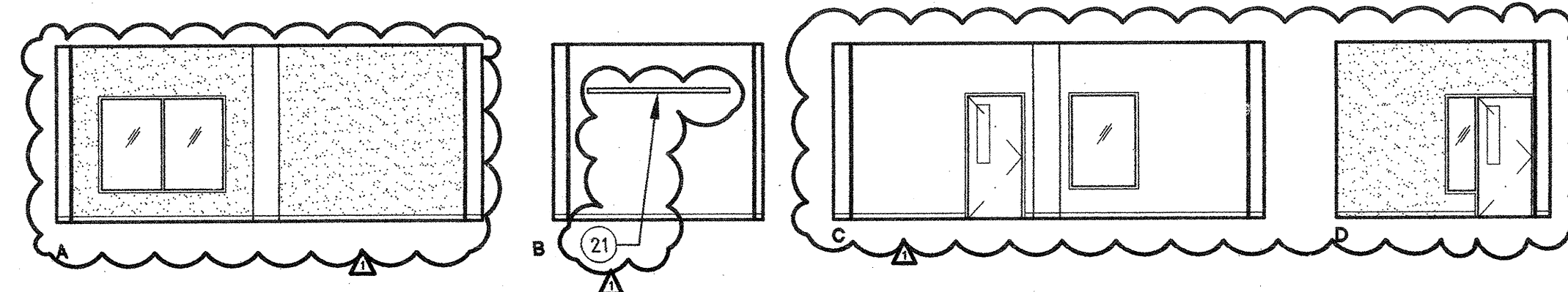
SERVERY RM. 5-322 11



A B C D

SCALE 1/8" = 1'-0"

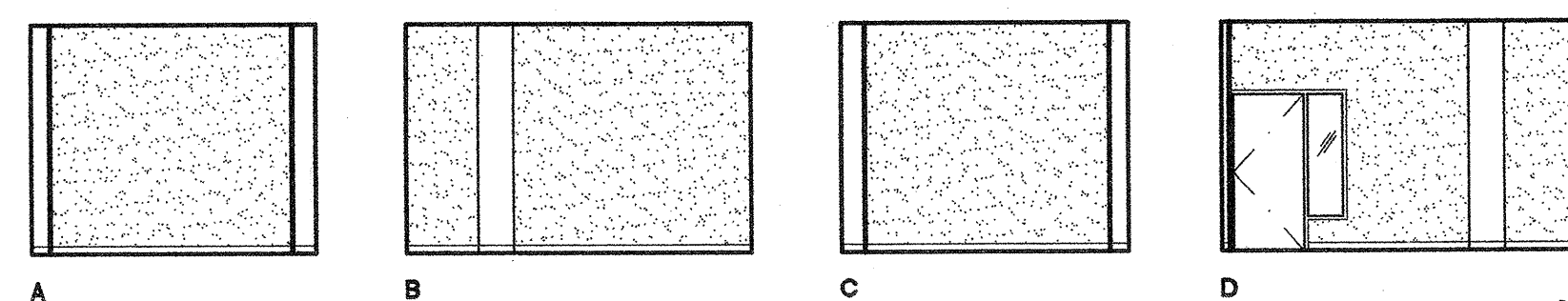
WAITING RM. 5-317 6



A B C D

SCALE 1/8" = 1'-0"

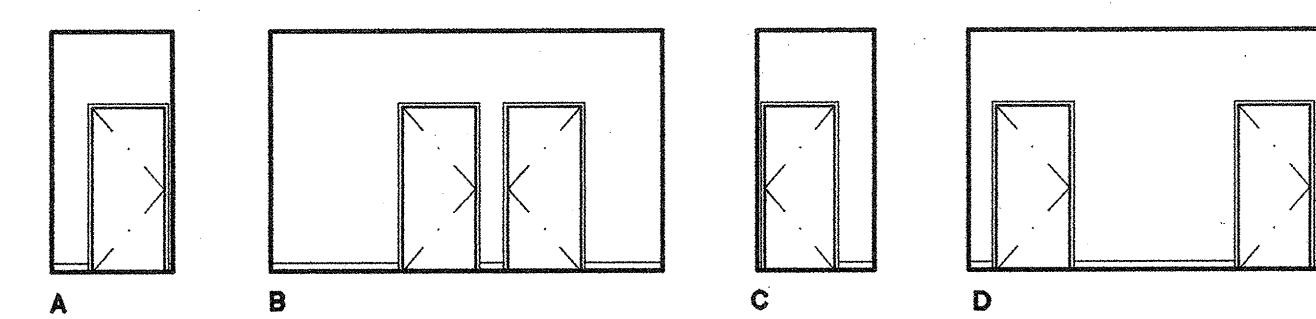
LARGE MEETING ROOM RM. 5-350 12



A B C D

SCALE 1/8" = 1'-0"

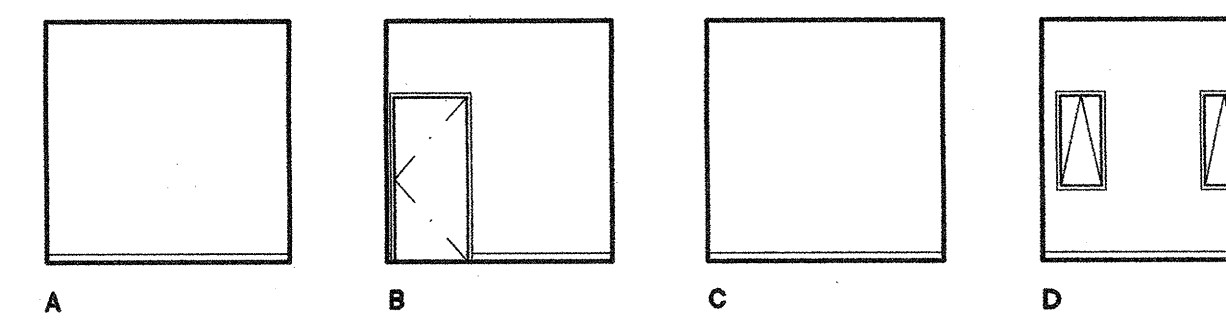
STUDENT GOVT. OFFICE RM. 5-351 13



A B C D

SCALE 1/8" = 1'-0"

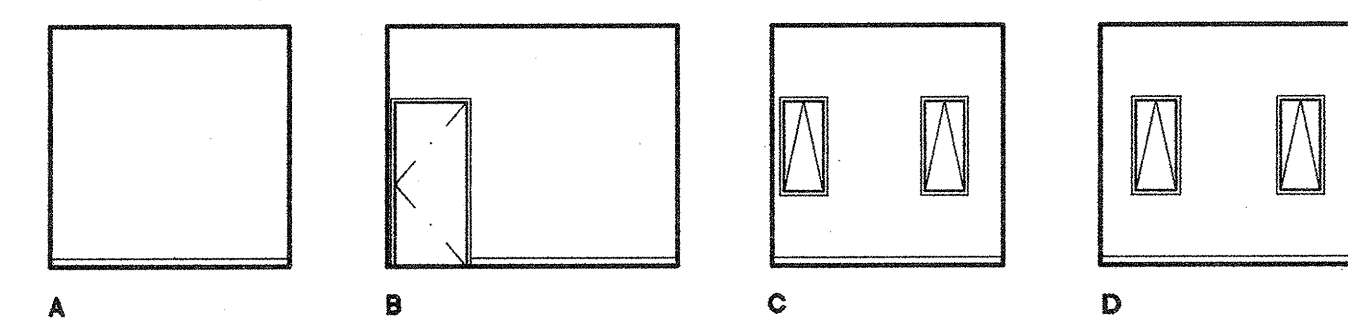
HALLWAY RM. 5-310S 1



A B C D

SCALE 1/8" = 1'-0"

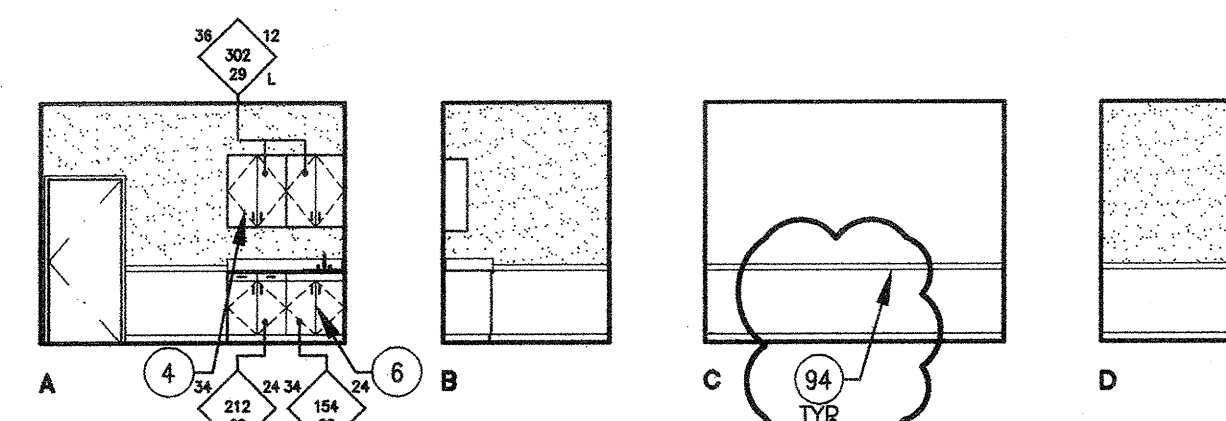
EVENING NURSE RM. 5-311 2



A B C D

SCALE 1/8" = 1'-0"

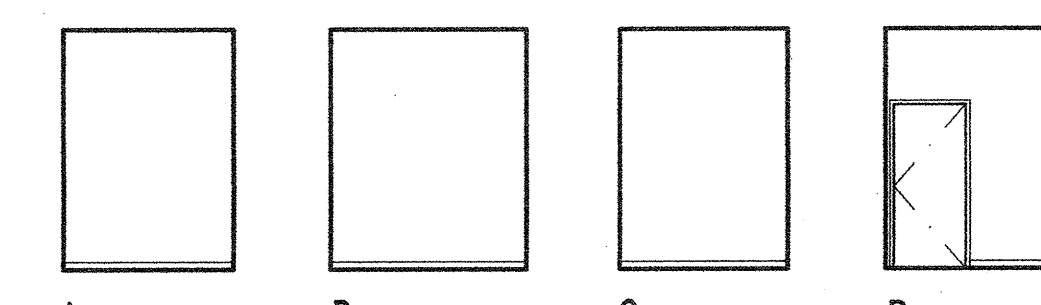
NURSE OFFICE RM. 5-312 3



A B C D

SCALE 1/8" = 1'-0"

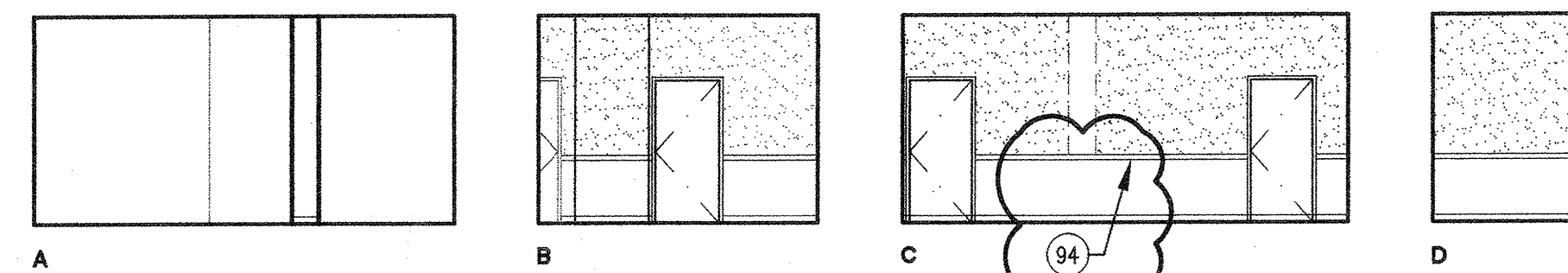
EXAM RM. 5-313 4



A B C D

SCALE 1/8" = 1'-0"

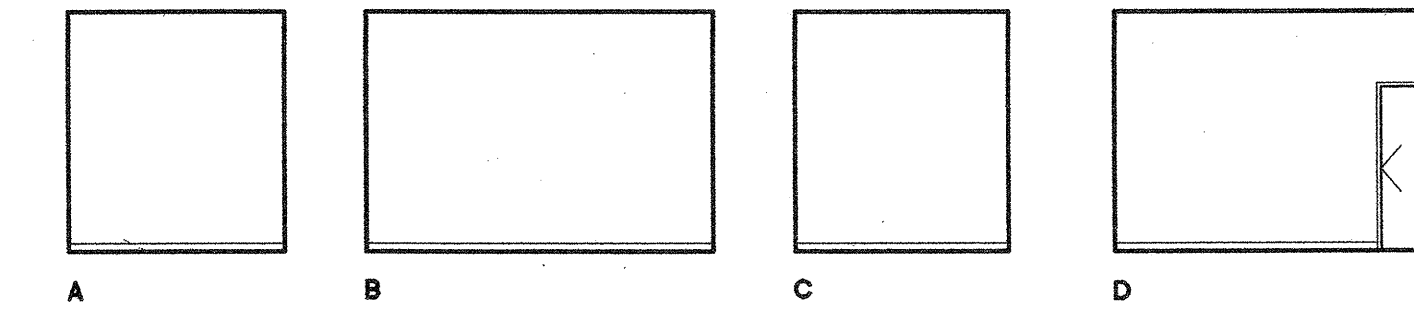
COT. ROOM RM. 5-315 5



A B C D

SCALE 1/8" = 1'-0"

WAITING RM. 5-317 6



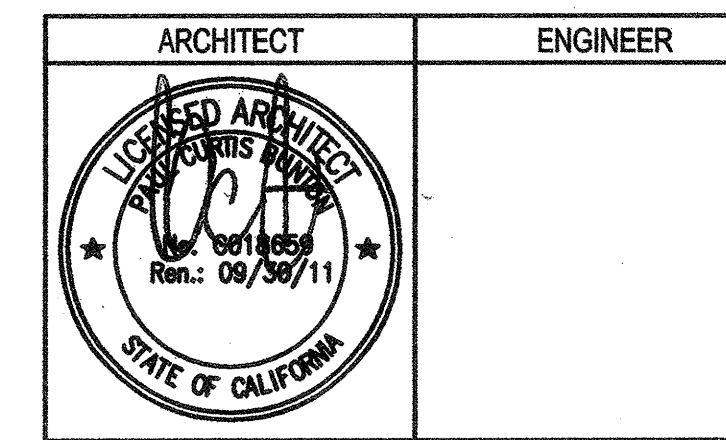
A B C D

SCALE 1/8" = 1'-0"

FILE ROOM RM. 5-317B 8

SHEET NOTES

- 1 FIRE EXTINGUISHER (20AB10C) ON WALL BRACKET MOUNT
- 2 FIRE EXTINGUISHER (20AB10C) IN SEMI-RECESSED CABINET (SEE DETS 25/A10.52 & 11/A10.62)
- 3 BASE CABINET
- 4 UPPER CABINET
- 5 ACCESSIBLE BASE CABINET W/ SINK
- 6 REFRIGERATOR SPACE (EQUIPMENT N.I.C.)
- 7 SOFFIT
- 8 SUSPENDED LIGHT FIXTURE
- 9 WALL MTD. PULL-DOWN PROJECTION SCREEN
- 10 WALL MTD. MOTORIZED PROJECTION SCREEN
- 11 OPERABLE PANEL PARTITION (SEE DETS. 19 & 20/A10.91)
- 12 HI-LO DRINKING FOUNTAIN (SEE DETS. 13, 14, 18 & 19/A10.62)
- 13 ELECTRONIC WHITEBOARD (SEE DET. 12/A10.62)
- 14 MOP SINK
- 15 RECEPTION COUNTER
- 16 COUNTER (OPEN BELOW)
- 17 POCKET FOR STORING FOLDING PARTITION
- 18 OFDI CASEWORK AND DUPLICATION EQUIPMENT
- 19 FIXED SHELVES
- 20 16'-0" W. MARKER BOARD W/ TOP OF MARKER TRAY @ 36" A.F.F. (SEE DETS. 22, 23/A10.51)
- 21 INFILL WALL W/ EXTERIOR CEMENT PLASTER FINISH
- 22 8'-0" W. TACKBOARD
- 23 4'-0" W. TACKBOARD
- 24 2"x2" THICK ACOUSTICAL PANELS
- 25 CHAIR RAIL WITH WAINSCOT PANEL BELOW (SEE 6/A10.62)



1. This sheet is part of a set and is not to be used alone.
2. This sheet is not to be used for construction unless the architect's stamp and signature appear on the drawings and the status box indicates drawings have been released for construction.
3. These plans and prints thereof, as instruments of service, are owned by the architect and are for use on this project only. Reproduction and/or distribution without the prior written consent of the architect is forbidden.
4. Copyright Bunton Clifford Associates, 2009

REMARKS	DATE
ADDENDUM NO. 1	09/18/09

DRAWING STATUS	DATE
● DSA PLAN CHECK	08/29/08
● DSA BACK CHECK	01/22/09
● BIDDING	09/18/09
○ CONSTRUCTION	

FILE NO. 41-C1

IDENTIFICATION STAMP
DIV. OF THE STATE ARCHITECT

01- 110074

AC _____ FLS _____ SS _____

DATE _____

BUILDINGS 5 & 6 RENOVATIONS

San Mateo County Community College District

BID ADDENDA

APPROVED BY
DIV. OF THE STATE ARCHITECT
ACD H. FLS. AC. SS. [Signature]
APPL. NO. 118924 DATE 2/10/10

CAÑADA COLLEGE
4200 Farm Hill Boulevard
Redwood City, CA 94061

THIRD FLOOR
INTERIOR ELEVATIONS

Date 08/29/08
Scale AS NOTED
Project Number 07013

Drawing Number
A8.5



Bunton Clifford Associates, Inc.
210 Hammond Ave.
Fremont, California 94539
[T] 510.445.1000
[F] 510.445.1005
www.BCAincOnline.com

GENERAL NOTES

LEGEND

