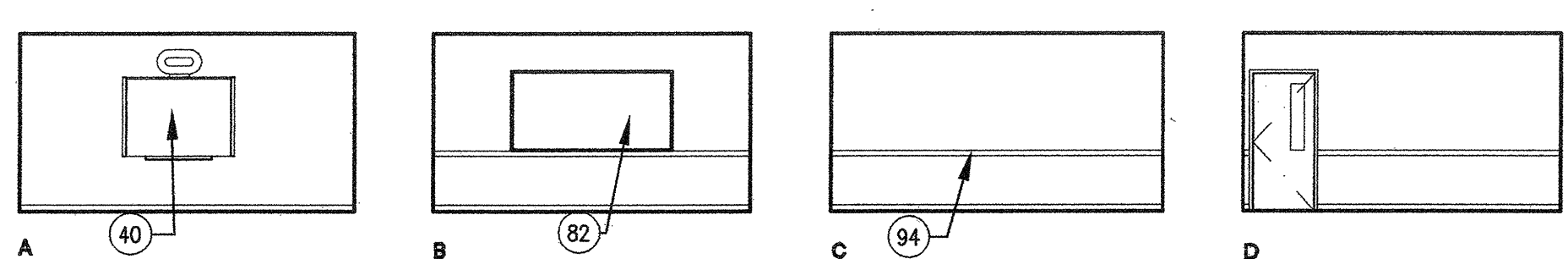


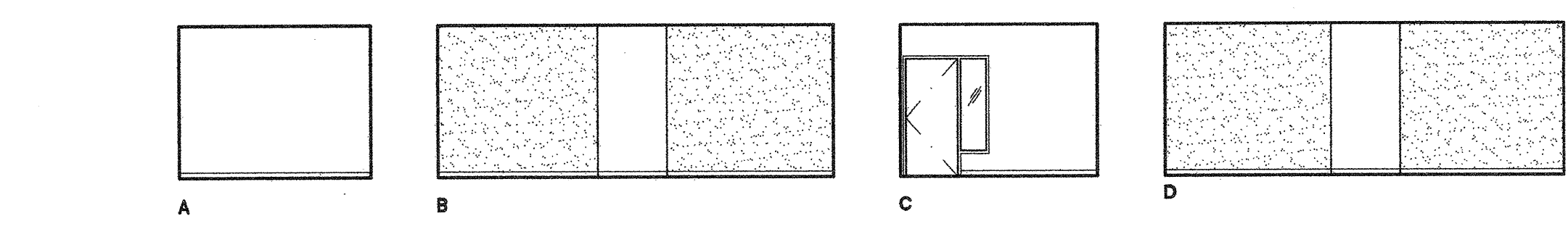
CLASSROOM RM. 5-223 9

SCALE 1/8" = 1'-0"



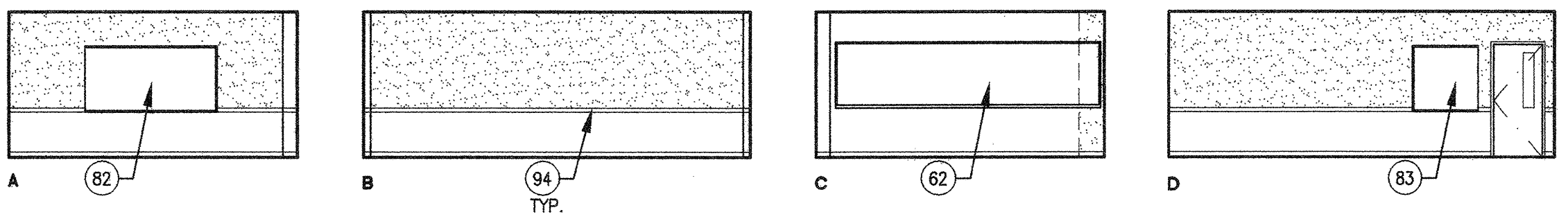
SEMINAR RM. 5-205 1

SCALE 1/8" = 1'-0"



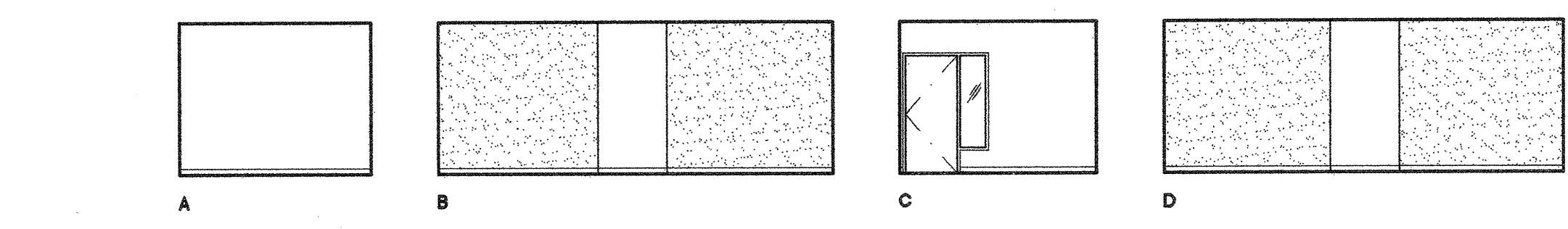
OFFICE RM. 5-224 10

SCALE 1/8" = 1'-0"



SEMINAR RM. 5-207 2

SCALE 1/8" = 1'-0"



OFFICE RM. 5-226 11

SCALE 1/8" = 1'-0"

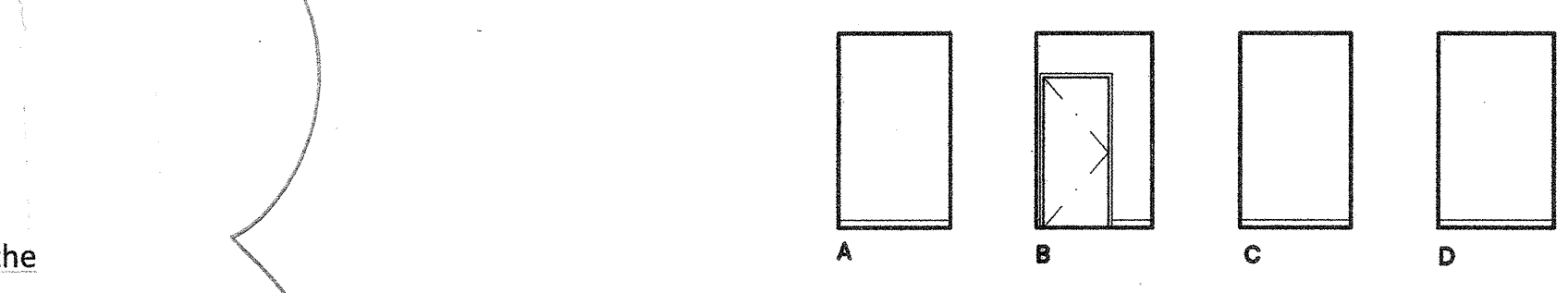
From: Acenas, Alexander
 Sent: Thursday, June 17, 2010 12:44 PM
 To: 'Holst, W.Andy'
 Cc: Rizzoli, Linda; Nelson, Blake; Sandrine Hitchcock; Glass, Danny W.; Huey, Justin
 Subject: RE: CAN 5:6: chair rail height?

Thanks for setting me up with Phil (and Scott) yesterday afternoon. I got to see a meeting room and a classroom in CSM B5. Based on what I saw, I think the top of the chair rail should be at +36" AFF, +/- 0.5". This will allow the bottoms of tack boards, white boards and marker trays to be at +36" AFF, and also allow the chair rail to run continuously below existing window openings in the exterior concrete wall. Although table edges and chair backs are around 29"-30" AFF, the walls would still be protected by the vinyl wainscot below the chair rail.

Let me know if there are any further questions re: this matter.

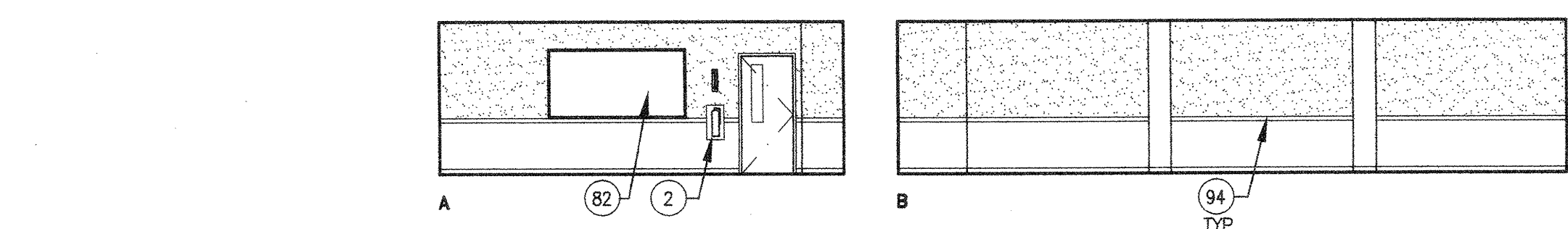
Alex

Alex Acenas, Architect
 Project Manager
 San Mateo County Community College District
 Construction Planning Department
 1700 W Hillside Blvd, CSM B27
 San Mateo, CA 94402
 650 358 6861 office



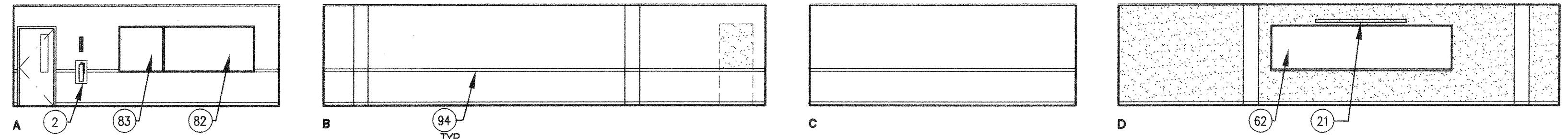
MAINTENANCE RM. 5-208 3

SCALE 1/8" = 1'-0"



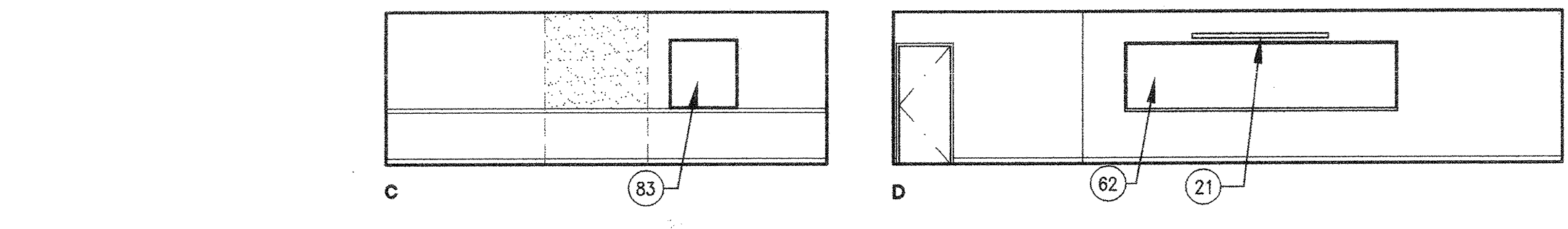
CLASSROOM RM. 5-227 12

SCALE 1/8" = 1'-0"



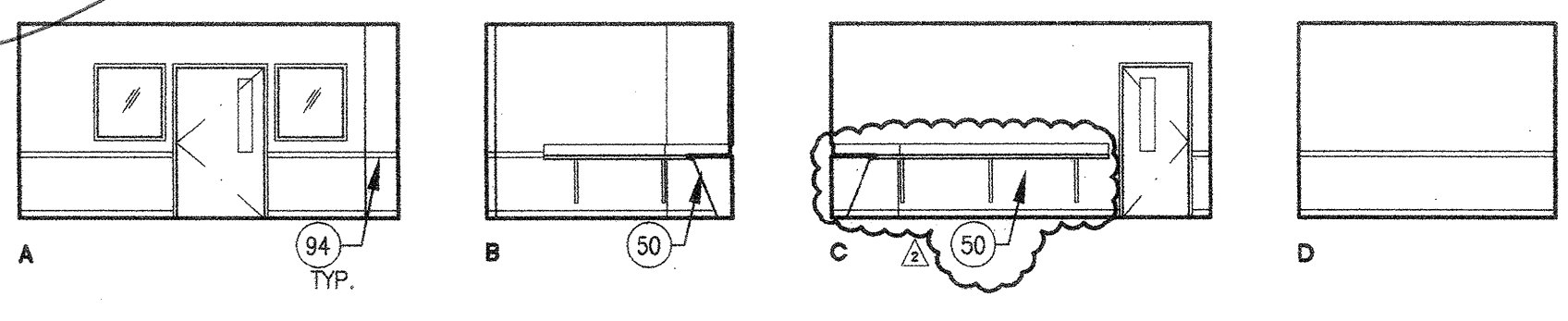
MAIL RM. 5-220 4

SCALE 1/8" = 1'-0"



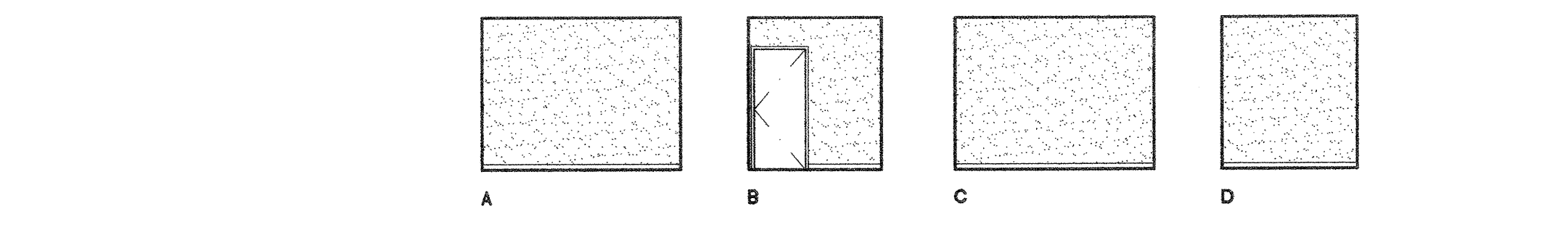
CLASSROOM RM. 5-221 5

SCALE 1/8" = 1'-0"



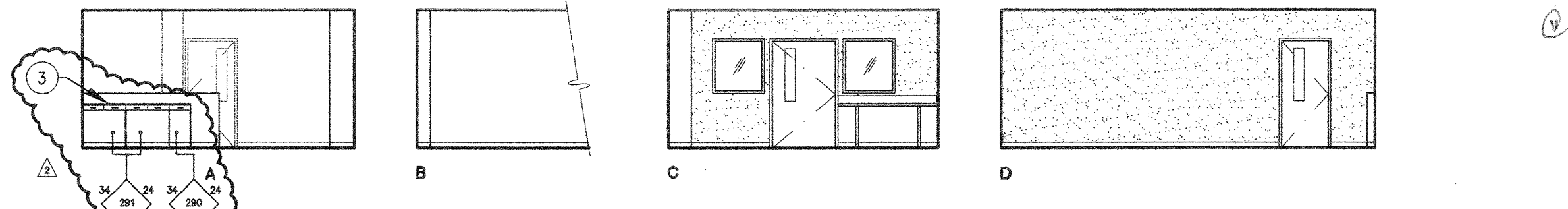
CLASSROOM RM. 5-222 6

SCALE 1/8" = 1'-0"



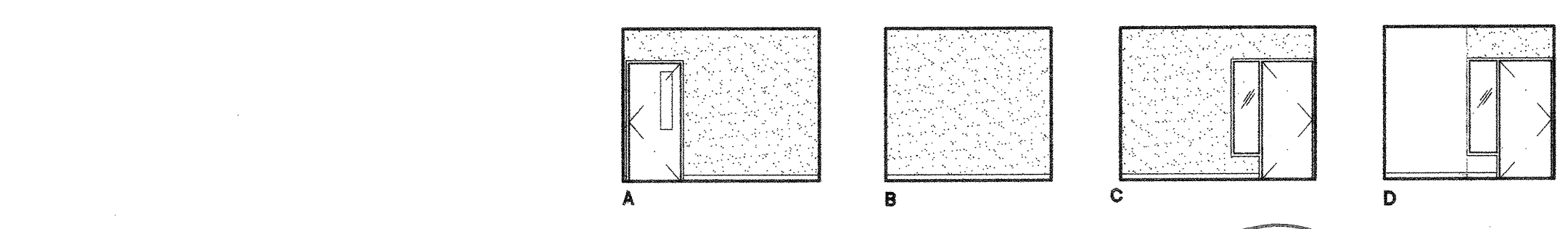
OFFICE RM. 5-227B 13

SCALE 1/8" = 1'-0"



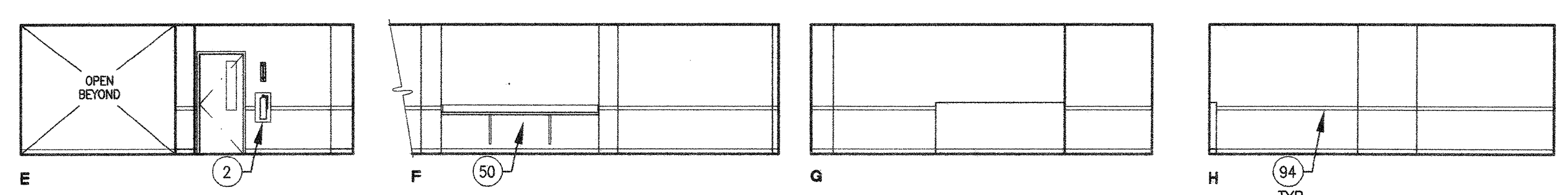
CENTRAL DUPLICATING RM. 5-222 7

SCALE 1/8" = 1'-0"



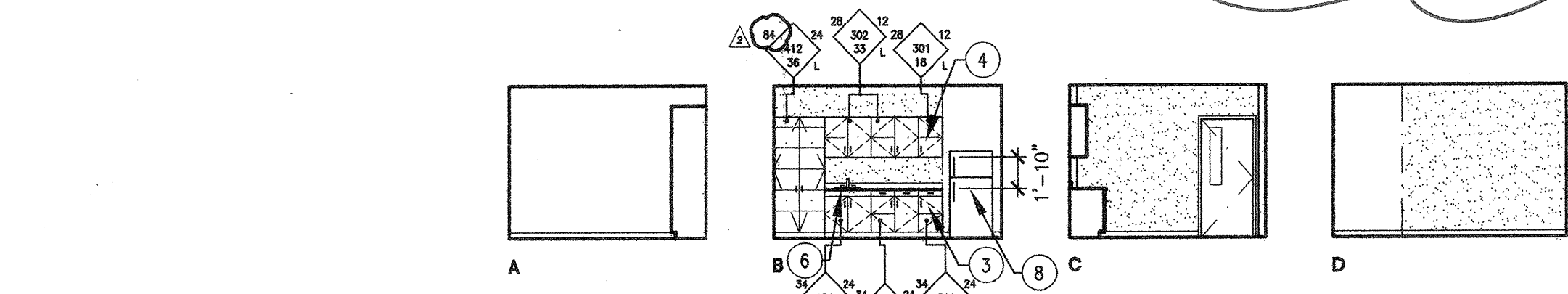
WORK RM. 5-228 14

SCALE 1/8" = 1'-0"



OFFICE RM. 5-222A 8

SCALE 1/8" = 1'-0"



BREAK RM. 5-228A 15

SCALE 1/8" = 1'-0"

RFP-22
 Relocate Casework
 + Plumb

NO CHAIR RAIL/WAINSCOT @ ELEVATION B

SHEET NOTES

- 1 FIRE EXTINGUISHER (20AB10C) ON WALL BRACKET MOUNT
- 2 FIRE EXTINGUISHER (20AB10C) IN SEMI-RECESSED CABINET (SEE DETS 25/A10.52 & 11/A10.62)
- 3 BASE CABINET
- 4 UPPER CABINET
- 6 ACCESSIBLE BASE CABINET W/ SINK
- 8 SIDE BY SIDE REFRIGERATOR SPACE (EQUIPMENT N.I.C.)
- 12 SOFFIT
- 18 SUSPENDED LIGHT FIXTURE
- 21 WALL MTD. PULL-DOWN PROJECTION SCREEN
- 22 WALL MTD. MOTORIZED PROJECTION SCREEN
- 38 OPERABLE PANEL PARTITION (SEE DETS. 19 & 20/A10.91)
- 39 HI-LO DRINKING FOUNTAIN (SEE DETS. 13, 14, 18 & 19/A10.62)
- 40 ELECTRONIC WHITEBOARD (SEE DET. 12/A10.62)
- 43 MOP SINK
- 45 RECEPTION COUNTER
- 46 COUNTER (OPEN BELOW)
- 52 POCKET FOR STORING FOLDING PARTITION
- 57 OFO CASEWORK AND DUPLICATION EQUIPMENT
- 58 FIXED SHELVES
- 62 16'-0" W. MARKER BOARD W/ TOP OF MARKER TRAY @ 36" A.F.F. (SEE DETS. 22, 23/A10.51)
- 63 INFILL WALL W/EXTERIOR CEMENT PLASTER FINISH
- 82 8'-0" W. TACKBOARD
- 83 4'-0" W. TACKBOARD
- 88 2"x2"x1" THICK ACOUSTICAL PANELS
- 94 CHAIR RAIL WITH WAINSCOT PANEL BELOW, SEE 8/A10.62

BCA
 architecture
 planning
 interiors

Bunton Clifford Associates, Inc.
 210 Hammond Ave.
 Fremont, California 94539
 [T] 510.445.1000
 [F] 510.445.1005
 www.BCAincOnline.com

ARCHITECT	ENGINEER

1. This sheet is part of a set and is not to be used alone.
 2. This sheet is not to be used for construction unless the architect's stamp and signature appear on the drawings and the status box indicates drawings have been released for construction.
 3. These plans and prints thereof, as instruments of service, are created by the architect and are for use on this project only. Reproduction and/or distribution without the prior written consent of the architect is forbidden.
 4. Copyright Bunton Clifford Associates, 2006

REVISION HISTORY	REMARKS	DATE
ADDENDUM NO. 1		09/18/09
ADDENDUM NO. 2		11/08/09

DRAWING STATUS	DATE
● DSA PLAN CHECK	08/28/08
● DSA BACK CHECK	01/22/09
● BIDDING	06/18/09
○ CONSTRUCTION	

FILE NO. 41-C1

APPROVED BY THE STATE ARCHITECT

01-110074

AC: FLS: SS: DATE:

BUILDINGS 5 & 6 RENOVATIONS
 San Mateo County Community College District

APPROVED BY THE STATE ARCHITECT

AC: *PL* FLS: *SS* SS: *SS*

APPL. NO. 110074 DATE 7/20/10

CAÑADA COLLEGE
 4200 Farm Hill Boulevard
 Redwood City, CA 94061

SECOND FLOOR INTERIOR ELEVATIONS

LEGEND

CASEWORK KEY:

HEIGHT	←	MODIFY
DEPTH	←	DEPTH
LENGTH	←	MODEL NO.
	←	LOCKABLE

NEW CONSTRUCTION/PATCH WALL

Date 08/29/08
 Scale AS NOTED
 Project Number 07013

Drawing Number **A8.3**