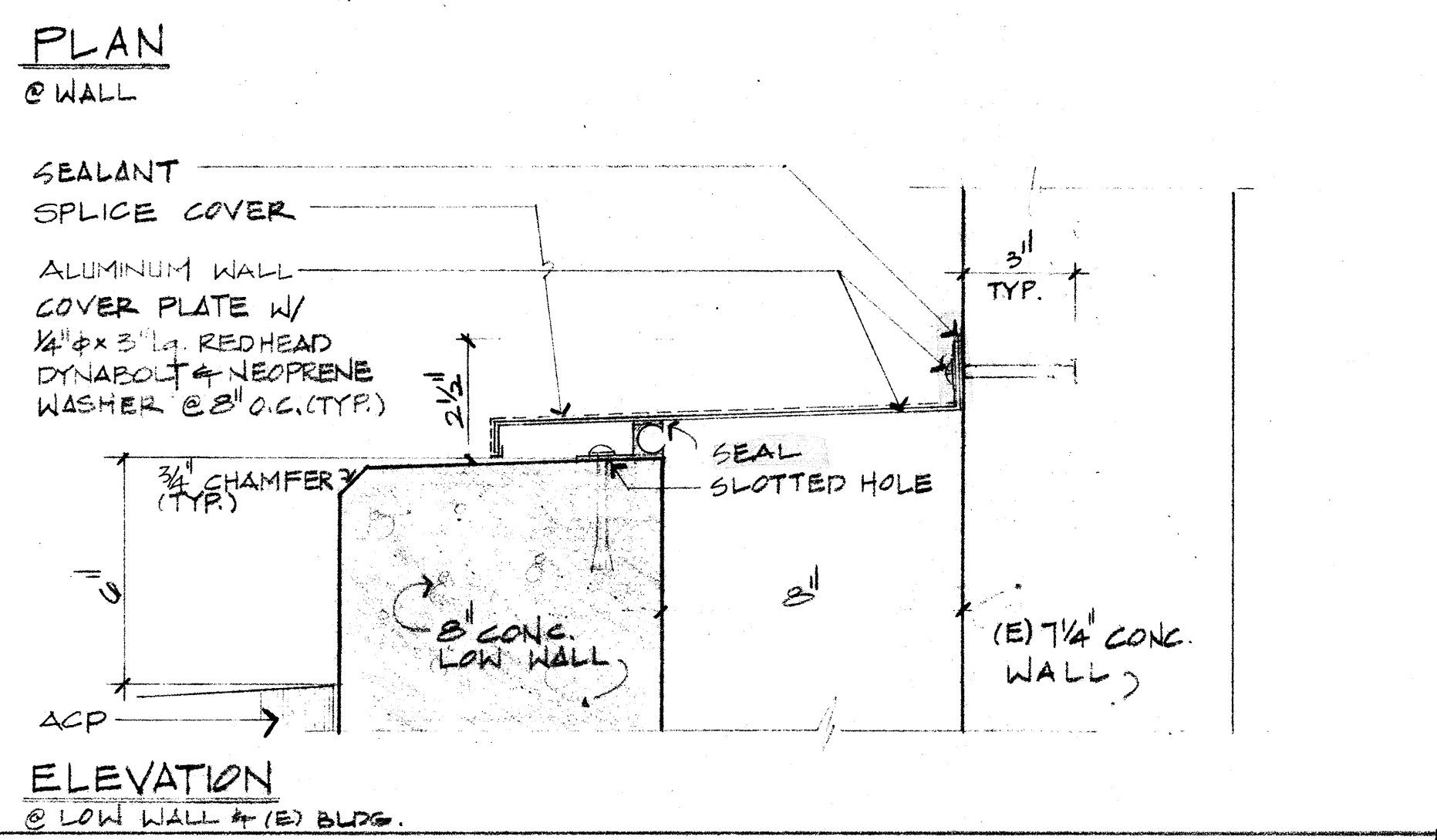
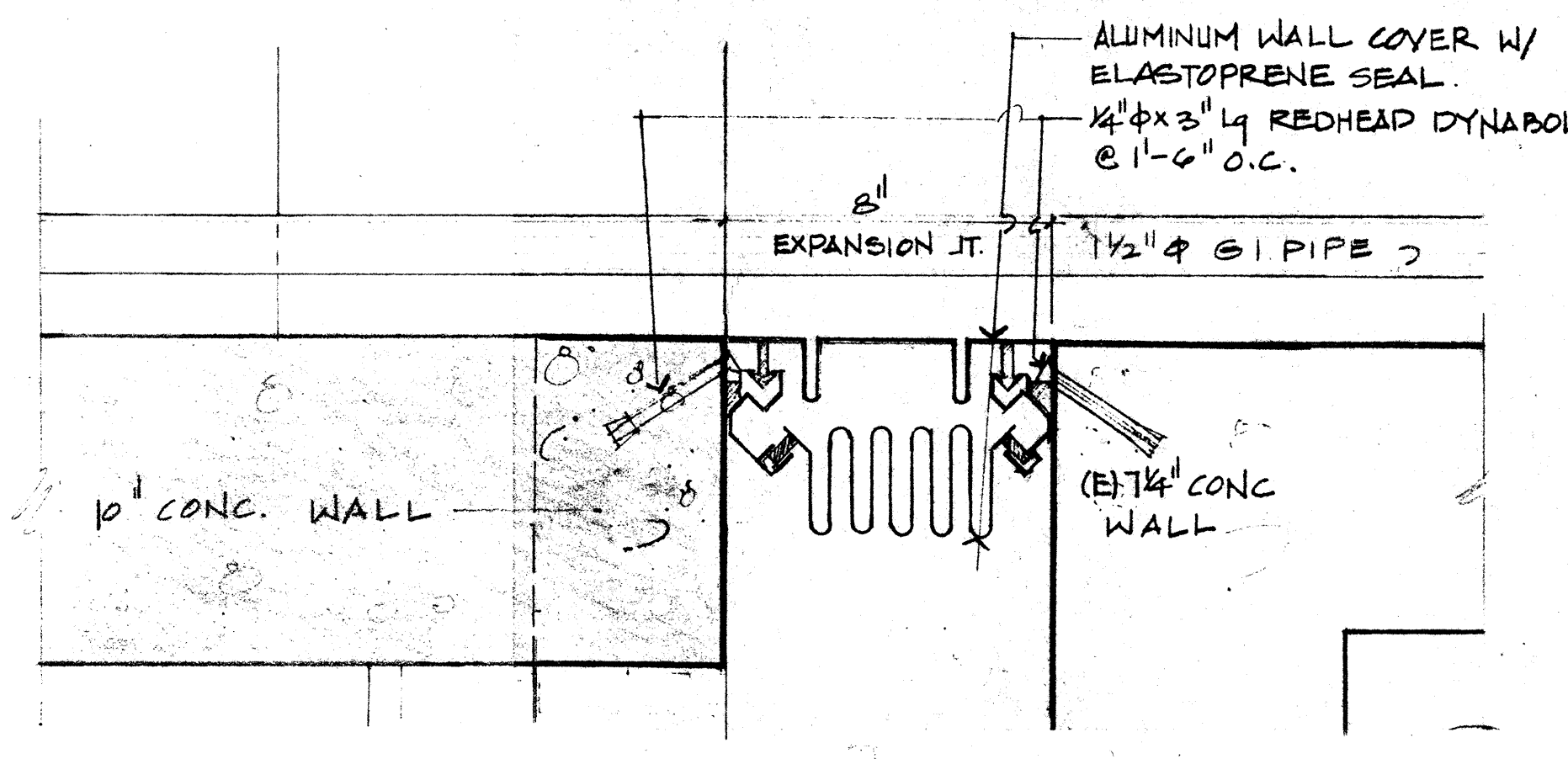


HANDRAIL @ TOP OF CONC WALL SCALE: 1/2" = 1'-0" 8



WALL EXPANSION JTS SCALE: 3/8" = 1'-0" 1

**OSA - STRUCTURAL SAFETY**

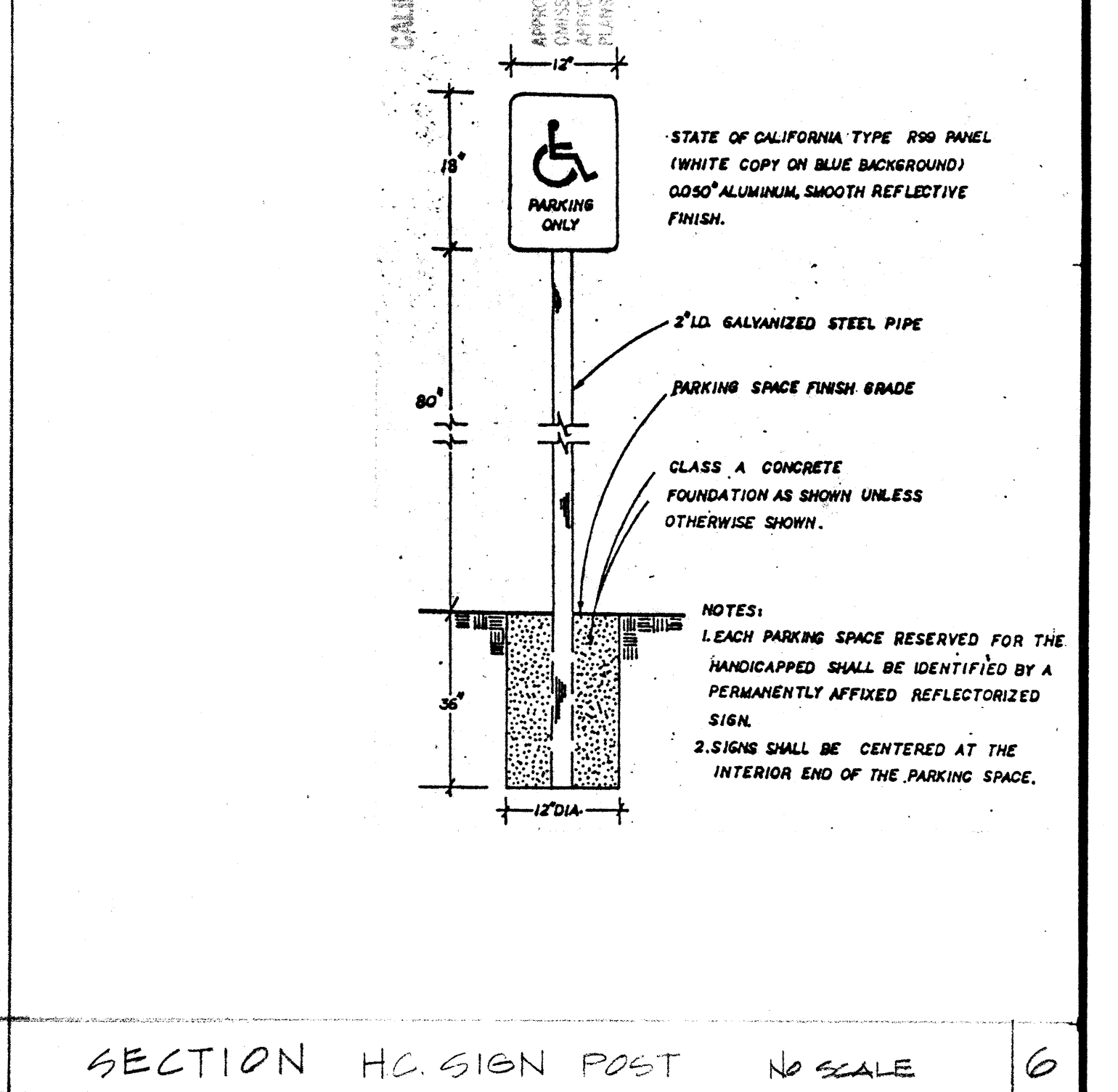
APPROVED FOR THE PROJECT BY THE ARCHITECT OR APPROVED BY THE ENGINEER. THE ARCHITECT OR ENGINEER SHALL BE RESPONSIBLE FOR THE DESIGN AND CONSTRUCTION OF THE PROJECT. THE ARCHITECT OR ENGINEER SHALL BE RESPONSIBLE FOR THE DESIGN AND CONSTRUCTION OF THE PROJECT. THE ARCHITECT OR ENGINEER SHALL BE RESPONSIBLE FOR THE DESIGN AND CONSTRUCTION OF THE PROJECT.

**STATE FIRE MARSHAL**

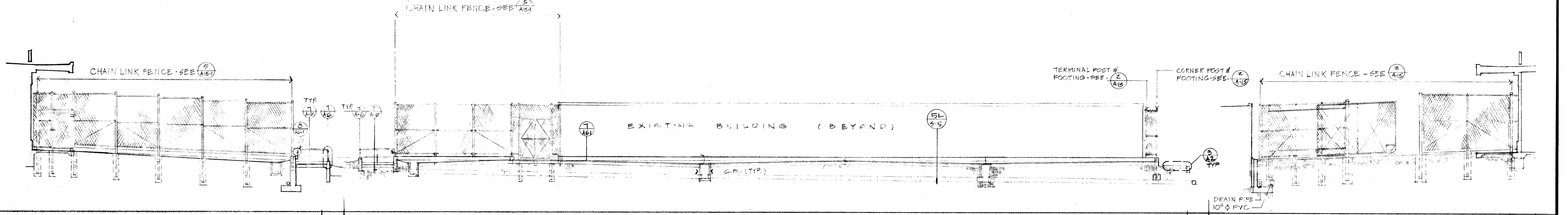
APPROVED

APPROVED FOR THE PROJECT BY THE ARCHITECT OR APPROVED BY THE ENGINEER. THE ARCHITECT OR ENGINEER SHALL BE RESPONSIBLE FOR THE DESIGN AND CONSTRUCTION OF THE PROJECT. THE ARCHITECT OR ENGINEER SHALL BE RESPONSIBLE FOR THE DESIGN AND CONSTRUCTION OF THE PROJECT. THE ARCHITECT OR ENGINEER SHALL BE RESPONSIBLE FOR THE DESIGN AND CONSTRUCTION OF THE PROJECT.

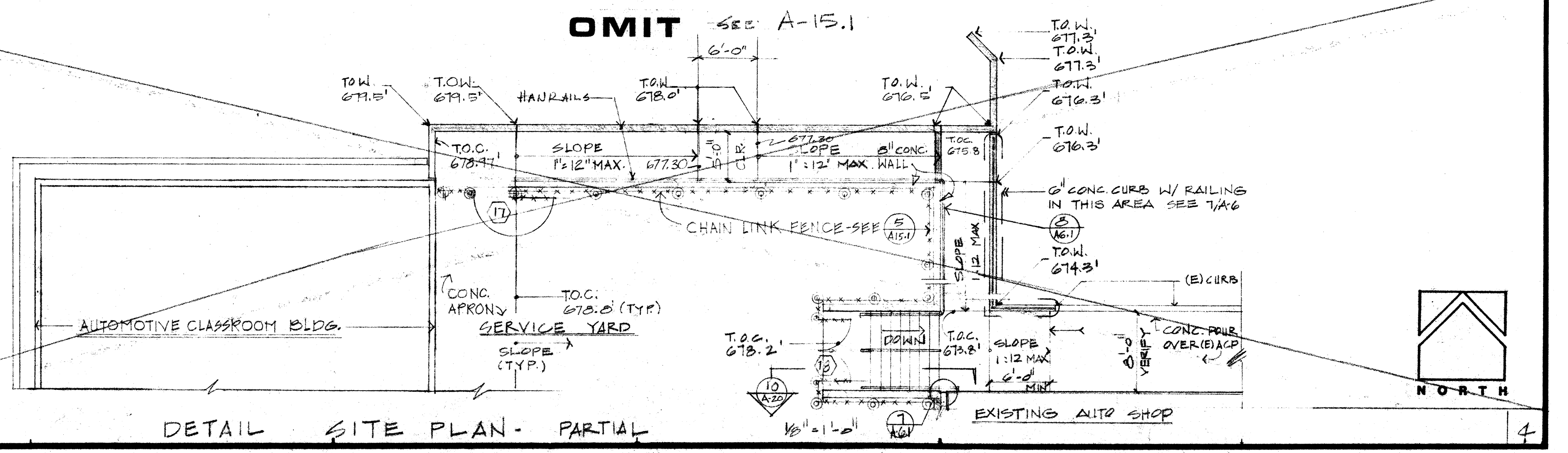
**OSA - ACCESS COMPLIANCE**



SECTION HC SIGN POST NO SCALE 6



SOUTH ELEVATION 3 SERVICE YARD ELEVATION - WEST SCALE: 1/8" = 1'-0" 1 NORTH ELEVATION 2



DETAIL SITE PLAN - PARTIAL SCALE: 1/8" = 1'-0" 4

REV 822 90

**KELLER AND DASEKING ARCHITECTS**

WALTER L. KELLER AIA  
WILLIAM H. DASEKING AIA

825 OAK GROVE AVENUE  
MENLO PARK, CA 94025-4159 6522-5566

**AUTOMOTIVE CLASSROOM BUILDING  
TOILET ROOM RENOVATIONS  
SKYLINE COLLEGE**

SAN MATEO COUNTY COMMUNITY COLLEGE DISTRICT

8906

3.12.90

**A6.1**

7 of 41